

Standard weight sweatshirts	209 - 217
Sweatshirt alternatives	218 - 219
Heavyweight sweatshirts	220 - 221
Organic & sustainable	222 - 223
Ladies sweatshirts	224
Ladies cropped sweatshirts	225
Contrast sweatshirts	226 - 227
Zip neck sweatshirts	228 - 229
Contrast zip neck sweatshirts	231
Zip jackets	232 - 233
Baseball sweat jackets	234 - 235
Casual blazers	235
Jog pants	237 - 239
Ladies jog pants	240
Ladies leggings	240
Leisure shorts	241
Leisure rugby	243 - 245

NX9700
NEXT LEVEL UNISEX PCH
BOMBER JACKET
P234



NEXT LEVEL
A P P A R E L™

WHAT'S **NOW.** WHAT'S **NEXT.**



762M



762B P635

762M Russell Raglan Sweatshirt

50% polyester/50% combed ring spun cotton.*
SpotShield™ stain resistant coating.
Fade resistant.
Ribbed collar, cuffs and hem.
Taped neck.
Twin needle stitching.

Weight: 295 gsm



Size: XS S M L XL XXL 3XL** 4XL**
Chest (to fit): 34/36 36/38 38/40 40/42 42/44 44/46 46/48 48/50

*Light oxford 53% polyester/47% cotton.
**Available in 3XL and 4XL.



SS8 [622160]



SS8B P635



SS8 Fruit of the Loom Classic Raglan Sweatshirt

80% cotton/20% polyester.*
Cotton/Lycra® ribbed collar, cuffs and hem.
Taped neck. Twin needle stitching. Cut out label.

Weight: White and Heather Grey 260 gsm,
Cols 280 gsm

Size: S M L XL XXL 3XL** 4XL**
Chest (to fit): 35/37 38/40 41/43 44/46 47/49 50/52 53/55

*Heather navy, heather green, dark heather and heather red 60% cotton/40% polyester.
**Available in 3XL. *Available in 3XL and 4XL.



AC001 AWDIs Academy Raglan Sweatshirt

80% ring spun cotton/20% polyester.
Soft cotton faced fabric.
Ribbed collar, cuffs and hem.
Taped neck. Twin needle stitching.
Name label at back neck.

Weight: 280 gsm

Size: XS S M L XL XXL
Chest (to fit): 34 36 40 44 48 52



AC001



AC001B P636

Just Hoods®

NEW COLOURS

FOR PLENTY OF CHOICE
Colours
42
Available
FOR PLENTY OF CHOICE



NEW
Peppermint

NEW
Vanilla Milkshake

JH030 Sweatshirt / XS-5XL
P213

AWDis

{ PETA - APPROVED
VEGAN }

SS120 [621380]



SS180 P210



SS120 Fruit of the Loom Lightweight Raglan Sweatshirt

80% cotton/20% polyester.
Unbrushed fleece.
Cotton/Lycra® ribbed collar, cuffs and hem.
Twin needle stitching.
Cut out label.

Weight: 240 gsm

Size: S M L XL XXL
Chest (to fit): 35/37 38/40 41/43 44/46 47/49

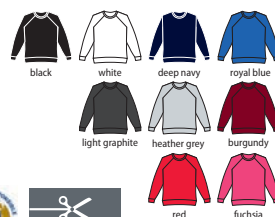


SS180 Fruit of the Loom Lady Fit Lightweight Raglan Sweatshirt

80% cotton/20% polyester.
Unbrushed fleece. Ladies fit.
Cotton/Lycra® ribbed collar, cuffs and hem.
Shaped side seams. Twin needle stitching.
Cut out label.

Weight: 240 gsm

Size: XS S M L XL XXL
Ladies size: 8 10 12 14 16 18
Chest (to fit): 30 32 34 36 38 40



SS180 [621460]



SS120 P210





RX301 PRO RTX Pro Sweatshirt

55% polyester/45% cotton.
Drop shoulder style.
Modern and comfortable fit.
Ribbed collar, cuffs and hem.
Taped neck.
Twin needle stitching.

Weight: 300 gsm

Size:	S	M	L	XL	XXL	3XL	4XL	5XL	6XL*	7XL*
Chest (to fit):	36	40	44	48	52	56	60	62	64	66

*Available in 6XL and 7XL.



SOL'S®

the fair spirit

NEW

03567 SOL'S Unisex Space
Organic Raglan Sweatshirt
P223

**80% organic cotton &
20% recycled polyester**



 Sustainable
Apparel Coalition

**FAIR
WEAR**



JH030

JustHoods®
AWDis

JH030B P637

SWEATS

NEW
COLOURS**JH030 AWDIs****Sweatshirt**

80% ringspun cotton/20% polyester.*
Soft cotton faced fabric. Brushed back fleece.
Drop shoulder style. Fashion fit.
Ribbed collar, cuffs and hem.
Taped neck.
Twin needle stitching.
Tear out label.

Weight: 280 gsm

Size:	XS	S	M	L	XL	XXL	3XL [■]	4XL [°]	5XL [°]
Chest (to fit):	34	36	40	44	48	52	56	60	62

*Black smoke 70% cotton/30% polyester.

**Charcoal 52% cotton/48% polyester.

▲Heather grey 75% cotton/25% polyester.

■Available in 3XL.

°Available in 4XL and 5XL.



Sedex

AN APPROVED
VEGANTear
Out

214 STANDARD WEIGHT SWEATSHIRTS

GD56 [18000]

GILDAN
Heavy Blend™



GD56B P637



GD56 Gildan Heavy Blend™ Sweatshirt

50% cotton/50% polyester.
Air jet yarn, softer feel and reduced pilling.
Pre-shrunk.
Drop shoulder style.
Ribbed collar, cuffs and hem with spandex.
Tubular knit. Twin needle stitching.
Tear out label (some colours in transition).

Weight: White 257 gsm, Cols 271 gsm

Size: S M L XL
Chest (to fit): 34/36 38/40 42/44 46/48
Size: XXL 3XL* 4XL* 5XL*
Chest (to fit): 50/52 54/56 58/60 62/64

*Available in 3XL-5XL.



Sedex



13250

SOL'S
the fair spirit



13250 SOL'S Unisex New Supreme Sweatshirt

50% cotton/50% polyester.
Brushed back fleece. Drop shoulder style.
Ribbed collar, cuffs and hem.
Taped neck. Twin needle stitching.

Weight: 280 gsm

Size: XS S M L
Chest (to fit): 35/36 36/38 38/40 41/42
Size: XL XXL 3XL
Chest (to fit): 43/44 45/47 47/49



01178 SOL'S Unisex Supreme Sweatshirt

80% cotton/20% polyester.
Brushed back fleece.
Drop shoulder style.
Ribbed collar, cuffs and hem with elastane.
Taped neck.

Weight: 280 gsm

Size: XS S M L
Chest (to fit): 35/36 36/38 38/40 41/42
Size: XL XXL 3XL
Chest (to fit): 43/44 45/47 47/49



01178

SOL'S
the fair spirit





262M



262M Russell Authentic Sweatshirt

80% combed ringspun cotton/20% polyester. Drop shoulder style. Self fabric collar, cuffs and hem. Taped neck. Slimmer shoulders and arms. Deep cuffs and hem. Coverseaming throughout.

Weight: 280 gsm

Size:	XS	S	M	L
Chest (to fit):	34/36	36/38	38/40	40/42
Size:	XL	XXL	3XL	4XL*
Chest (to fit):	42/44	44/46	46/48	48/50

*Available in 4XL.



K302 Kustom Kit Klassic Sweatshirt

65% polyester/35% cotton. Drop shoulder style. Self fabric collar. Taped neck and shoulders. Double layer self fabric cuffs and hem. Twin needle stitched shoulders and armholes. Tear out label. Superwash® 60°C.

Weight: 280 gsm

Size:	XS	S	M	L	XL	XXL	3XL	4XL
Chest (to fit):	32/34	36/38	40	42	44	46/48	50/52	54/56



02990 SOL'S Unisex Sully Sweatshirt

80% ringspun cotton/20% polyester.* Cotton faced fabric. Brushed back fleece. Drop shoulder style. 2x2 ribbed collar, cuffs and hem. V detail at front neck. Taped neck. Half moon back yoke. Unbranded size label at neckline.

Weight: 280 gsm

Size:	XS	S	M	L
Chest (to fit):	35/36	36/38	38/40	41/42
Size:	XL	XXL	3XL	
Chest (to fit):	43/44	45/47	47/49	



*Charcoal marl, heather denim and heather oxblood 60% cotton/40% polyester. **Ash 79% cotton/20% polyester/1% viscose. *Grey marl 75% cotton/20% polyester/5% viscose.



SS9 Fruit of the Loom Classic Drop Shoulder Sweatshirt

80% cotton/20% polyester.* Cotton/Lycra® ribbed collar, cuffs and hem. Shoulder to shoulder taping. Cut out label.

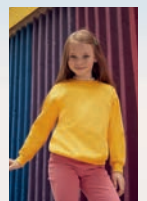
Weight: White and Heather Grey 260 gsm, Cols 280 gsm

Size:	S	M	L	XL
Chest (to fit):	35/37	38/40	41/43	44/46
Size:	XXL	3XL**▲	4XL▲■	5XL■
Chest (to fit):	47/49	50/52	53/55	56/58

*Heather navy, heather green, dark heather and heather red 60% cotton/40% polyester. **Available in 3XL. ▲Available in 3XL and 4XL. ■Available in 3XL, 4XL and 5XL.



SS9 [622020]

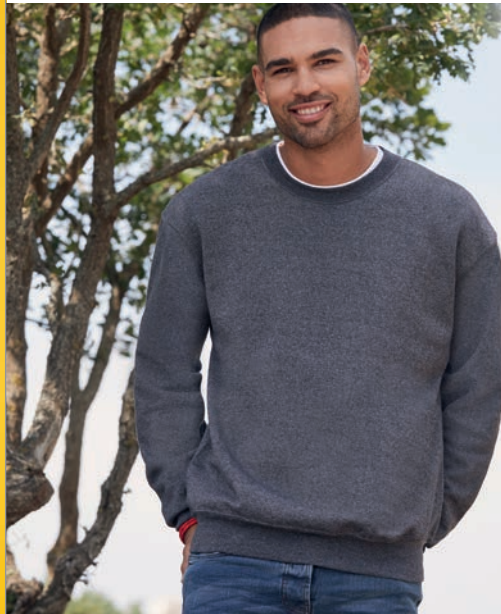


SS9B P636



K302

KUSTOM KIT



écologie.

RE-GEN SWEATER COLLECTION

by **AWDis**

SWEATS

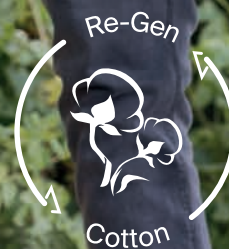


EA061
Unisex Wakhan
Zip Neck
Regen Sweater
P342

EA062
Unisex Taroko
Regen Crew Neck
Sweater
P341

EA060
Unisex Arenal
Regen Crew Neck
Sweater
P341

RE-GEN



Blended with waste from t-shirt production and recycled plastic bottles, this range is created from the world's waste.



SF525


SF525 SF
Unisex Slim Fit Sweatshirt

60% cotton/40% polyester.*
 Brushed back fleece. Raglan sleeves.
 Ribbed collar, cuffs and hem. Side panels with eyelet detail.
 Tonal cover stitch. Tear out label.

Weight: 250 gsm

Size:	XXS	XS	S	M	L	XL	XXL
Chest (to fit):	32/34	34/36	36/38	38/40	42	44/46	48

*Heather grey 75% cotton/20% polyester/5% viscose.



Sedex

Tear Out

CV3945 Bella+Canvas
Unisex Drop Shoulder Sweatshirt

52% airlume combed ringspun cotton/48% polyester.
 Pre-shrunk. Retail fit. 1x1 ribbed collar, cuffs and hem.
 Taped neck. Twin needle stitching. Tear out label.

Weight: 220 gsm

Size:	XS	S	M	L	XL	XXL
Chest (to fit):	31/34	34/37	38/41	42/45	46/49	50/53



Tear Out

NX9001 Next Level
Unisex Crew Neck Pocket Sweatshirt

80% cotton/20% polyester.
 Brushed back fleece. Drop shoulder style.
 1x1 ribbed collar, cuffs and hem. Locker patch.
 Front pouch pocket. Tear out label.

Weight: 250 gsm

Size:	XS	S	M	L	XL	XXL	3XL
Chest (to fit):	33/35	35/38	38/41	43/44	45/48	48/52	53.5/56



Tear Out

CV3743 Bella+Canvas
Unisex Raw Seam Crew Neck Pullover

52% airlume combed ringspun cotton/48% polyester.
 Brushed back fleece. Drop shoulder style. Retail fit.
 Ribbed collar, cuffs and hem. Oversized front pouch pocket.
 Raw seam finish throughout.
 Tear out label.

Weight: 230 gsm

Size:	XS	S	M	L	XL	XXL
Chest (to fit):	31/34	34/37	38/41	42/45	46/49	50/53



Tear Out



NX9001

NL | **NEXT LEVEL**
 APPAREL


CV3743

BELLA+CANVAS

NEW

218 SWEATSHIRT ALTERNATIVES

SWEATS

JH093

JustHoods
AWDis



JH093 AWDIs Washed Sweatshirt

55% ringspun cotton/45% polyester.
Soft cotton faced fabric. Brushed back fleece.
Washed effect. Drop shoulder style. Fashion fit.
Ribbed collar, cuffs and hem. Taped neck. Twin needle stitching.
Due to washing process each garment is unique.

Weight: 280 gsm

Size:	XS	S	M	L	XL	XXL	3XL
Chest (to fit):	34	36	40	44	48	52	56



Sedex

NO ANIMALS
VEGAN

CV3901

BELLA+CANVAS.



CV3901 Bella+Canvas Unisex Sponge Fleece Sweatshirt

Solid colours 52% airlume combed ringspun cotton/48% polyester. Tri-blends 50% airlume combed ringspun cotton/37.5% polyester/12.5% rayon.
Heathers 60% airlume combed ringspun cotton/40% polyester. Soft feel fabric. Raglan sleeves. Retail fit.
Ribbed cuffs and hem.

Weight: Solid and Heather colours 220 gsm,
Tri-blends 280 gsm

Size:	XS	S	M
Chest (to fit):	31/34	34/37	38/41
Size:	L	XL	XXL
Chest (to fit):	42/45	46/49	50/53



SF520 SF

Unisex Washed Tour Sweatshirt

100% cotton french terry.
Washed effect. Drop shoulder style. Stretch ribbed collar, cuffs and hem.
Shoulder to shoulder taping. Forward shoulder seams.
Twin needle stitching. Due to the washing process each garment is unique.
Unbranded size label.

Weight: 250 gsm

Size:	XXS	XS	S	M
Chest (to fit):	32/34	34/36	36/38	38/40
Size:	L	XL	XXL	
Chest (to fit):	42	44/46	48	



Sedex

No Label

T5500 Tee Jays

Vintage Lightweight Raglan Sweatshirt

60% cotton/40% polyester.
Raglan sleeves. Brushed back fleece. Shaped fit.
Ribbed collar, cuffs and hem with elastane.
Stitched V detail at front neck.

Weight: 260 gsm

Size:	XS	S	M	L	XL	XXL	3XL
Chest (to fit):	35/36	36/38	38/40	41/42	43/44	45/47	47/49



SF520



T5500

TEE JAYS



260M



260M Russell Authentic Melange Sweatshirt

75% combed ringspun cotton/21% polyester/4% viscose.*
Brushed back fleece. 100% cotton outer layer.
Drop shoulder style. Straight modern cut.
Elastane ribbed collar, cuffs and hem. Herringbone taped neck.
V detail at front neck. Locker patch. Offset shoulder seams.
Coverseamed armholes, cuffs and hem. Unbranded size label.

Weight: 280 gsm

Size:	XS	S	M	L	XL	XXL	3XL
Chest (to fit):	34/36	36/38	38/40	40/42	42/44	44/46	46/48

*Carbon melange 77% cotton/23% polyester.



272M



272B P638

272M Russell V Neck Sweatshirt

50% combed ringspun cotton/50% polyester.*
Drop shoulder style. Ribbed neckline, cuffs and hem.
Taped neck. Side seams.

Weight: 295 gsm



Size:	XS	S	M	L	XL	XXL**
Chest (to fit):	34/36	36/38	38/40	40/42	42/44	44/46

*Light oxford 53% polyester/47% cotton.

**Available in XXL.

273M Russell Sweat Cardigan

50% combed ringspun cotton/50% polyester.*
Drop shoulder style. Six button cardigan (five on XS). Side seam pockets. Ribbed neckline, cuffs and hem.

Weight: 295 gsm

Size:	XS	S	M	L	XL
Chest (to fit):	34/36	36/38	38/40	40/42	42/44

*Light oxford 53% polyester/47% cotton.



AC003 AWDIs Academy V Neck Sweatshirt

80% ringspun cotton/20% polyester.
Soft cotton faced fabric. Drop shoulder style.
Ribbed neckline, cuffs and hem.
Taped neck. Twin needle stitching.
Name label at back neck.

Weight: 280 gsm

Size:	XS	S	M	L	XL	XXL
Chest (to fit):	34	36	40	44	48	52



273M



273B P639

AC003



AC003B P638

220 HEAVYWEIGHT SWEATSHIRTS

JH130

JustHoods®
 AWDIs

JH130 AWDIs
Graduate Heavyweight Sweatshirt

70% ringspun cotton/30% polyester.*
 Soft cotton faced fabric.
 Brushed back fleece.
 Raglan sleeves.
 2x2 ribbed collar, cuffs and hem.
 Twin needle stitching.
 Tear out label.

Weight: 330 gsm

Size:	XS	S	M	L	XL	XXL	3XL
Chest (to fit):	34	36	40	44	48	52	56

*Charcoal 55% polyester/45% cotton.

**Heather grey 65% cotton/35% polyester.


Sedex® { AN APPROVED VEGAN }

Tear Out

GD52 [12000]

GILDAN®
 DryBlend®

GD52 Gildan
DryBlend® Sweatshirt

50% cotton/50% DryBlend® polyester.
 Air jet yarn, softer feel and reduced pilling.
 Moisture wicking properties. Pre-shrunk.
 Drop shoulder style. Ribbed trim with spandex at collar, cuffs and hem. Tubular knit. Twin needle stitching.
 Tear out label (some colours in transition).

Weight: White 297 gsm, Cols 305 gsm

Size:	S	M	L	XL	XXL
Chest (to fit):	34/36	38/40	42/44	46/48	50/52


Sedex®

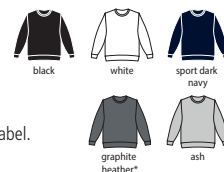
Tear Out
GH060 Gildan
Hammer Sweatshirt

80% combed ringspun cotton/20% polyester.*
 Soft cotton faced fabric. Drop shoulder style. Classic fit.
 1x1 ribbed collar, cuffs and hem with spandex.
 Half moon locker patch. Twin needle stitching. Tear out label.

Weight: 305 gsm

Size:	S	M	L	XL	XXL	3XL
Chest (to fit):	34/36	38/40	42/44	46/48	50/52	54/56

*Graphite heather 60% cotton/40% polyester.


Sedex®

Tear Out

GH060 [HF000]

GILDAN®
HAMMER




T5400

TEE JAYS

T5400 Tee Jays Urban Raglan Sweatshirt

100% ringspun combed cotton.*
Enzyme washed. Unbrushed. Loose fashion fit. 2x2 ribbed collar, cuffs and hem with elastane. Contrast taped neck. Stitched V detail at front neck.

Weight: 320 gsm



Size:	S	M	L	XL	XXL	3XL
Chest (to fit):	36/38	38/40	41/42	43/44	45/47	47/49

*Heather grey 80% cotton/20% polyester.

Sedex



M76

★SUPERSTAR
by mantis

M76 Superstar by Mantis Raglan Sweatshirt

80% OCS certified organic cotton/20% polyester.
Brushed back fleece. Stitched V detail at neck.
Ribbed collar, cuffs, hem and side panels.
Double taping detail at back neck. Tear out label.

Weight: 330 gsm



Size:	S	M	L	XL	XXL
Chest (to fit):	36/38	39/41	42/44	45/47	48/49



Tear Out { APPROVED VEGAN }

013M Russell Heavyweight Sweatshirt

80% ringspun combed cotton/20% polyester.
SpotShield™ stain resistant coating. Drop shoulder style.
1x1 ribbed collar and cuffs with elastane. Taped neck.
Locker patch. Double layer fabric shoulders for durability.
Elasticated pen holder on sleeve. Ribbed bound open hem.
Drop hem. Suitable for 60°C domestic wash.

Weight: 300 gsm



Size:	XS	S	M	L
Chest (to fit):	34/36	36/38	38/40	40/42
Size:	XL	XXL	3XL	4XL
Chest (to fit):	42/44	44/46	46/48	48/50

R
russell

KB442 Kariban Crew Neck Sweatshirt

80% combed cotton/20% polyester.
Drop shoulder style.
Ribbed collar, cuffs and hem.
Contrast grey taped neck.
Stitched V detail at neck.

Weight: 360 gsm



Size:	XS	S	M	L	XL	XXL
Chest (to fit):	32/34	34/36	38	40	42	44/46

WRAP Sedex

KB442

KARIBAN



013M



222 ORGANIC SWEATSHIRTS

JH230

JustHoods
AWDis

NEW

JH230 AWDIs
Organic Sweatshirt

80% organic cotton/20% recycled polyester.*
Soft cotton faced fabric. Brushed back fleece.
Drop shoulder style. Fashion fit.
Ribbed collar, cuffs and hem. Taped neck.
Twin needle stitching. Tear out label.

Weight: 280 gsm

Size:	XS	S	M	L	XL	XXL
Chest (to fit):	34	36	40	44	48	52

*Heather grey 75% organic cotton/25% recycled polyester.



KB480

KARIBAN



KB481 Online

KB480 Kariban
Organic Raglan Sweatshirt

80% OCS certified organic cotton/20% polyester.
Ribbed collar, cuffs and hem. Taped neck.
Stitched V detail at front neck.
Unbranded size label at neckline.

Weight: 300 gsm

Size:	S	M	L	XL	XXL
Chest (to fit):	34/36	38	40	42	44/46



Sedex

03574 SOL'S
Unisex Comet Organic Sweatshirt

80% OCS certified organic cotton/20% recycled polyester.
Cotton faced fabric. Unbrushed fleece.
Drop shoulder style. 2x2 ribbed collar, cuffs and hem.
Herringbone taped neck. Half moon back yoke.
Unbranded size label at neckline.

Weight: 280 gsm

Size:	XS	S	M	L	XL	XXL	3XL	4XL
Chest (to fit):	35/36	36/38	38/40	41/42	43/44	45/47	47/49	50/52

208M Russell
Pure Organic Reversible
Sweatshirt

100% certified organic ringspun combed cotton. Ultra soft face with unbrushed terry twill reverse. Drop shoulder style. Ribbed collar, cuffs and hem with Lycra®. Taped neck and shoulders. Overlock stitched seams. Leather-look patch above left hem.
Unbranded size label on waistband which tucks away into small pocket.

Weight: 300 gsm

Size:	XS	S	M	L
Chest (to fit):	34/36	36/38	38/40	40/42
Size:	XL	XXL	3XL	
Chest (to fit):	42/44	44/46	46/48	



03574

SOL'S
the fair spirit

NEW



208M

R
russell
pure organic



03567

SOL'S
the fair spirit

03567 SOL'S
Unisex Space Organic
Raglan Sweatshirt

80% OCS certified organic cotton/20% recycled polyester. Cotton faced fabric. Brushed back fleece. 2x2 cotton/elastane ribbed collar, cuffs and hem. Taped neck. Half moon back yoke. Unbranded size label at neckline.

Weight: 280 gsm



Size:	XXS	XS	S	M	L	XL	XXL	3XL
Chest (to fit):	32/34	35/36	36/38	38/40	41/42	43/44	45/47	47/49


M194 Mantis
The Sweatshirt

80% OCS certified organic cotton/20% recycled PET french terry.* Drop shoulder style. Ribbed collar, cuffs and hem. Herringbone taped neck. Locker patch. Tear out label.

Weight: 280 gsm



Size:	XS	S	M	L	XL	XXL
Chest (to fit):	33/35	36/38	39/41	42/44	45/47	48/49

*Heather marl 71% organic cotton/21% recycled PET french terry/8% viscose.



M194

mantis


FB1902

ORIGINAL
FNB
FB1902 Original FNB
Unisex Organic Sweatshirt

80% certified organic combed cotton/20% recycled polyester.* Pre-shrunk. Brushed back fleece. Drop shoulder style. Ribbed collar, cuffs and hem. Taped neck. Tear out label.

Weight: 320 gsm



Size:	XS	S	M	L	XL	XXL	3XL
Chest (to fit):	35/36	37/38	39/40	41/42	43/44	45/47	48/50

*Ready To Dye 100% cotton.


EA030 Ecologie
Unisex Banff Regen Sweatshirt

70% regenerated cotton/30% recycled polyester. French terry. Drop shoulder style. Fashion fit. Ribbed collar, cuffs and hem. Taped neck. Angled cuff detail. Unbranded size label at neckline. Regenerated cotton is made from 100% pre-consumer waste.

Weight: 260 gsm



Size:	XS	S	M	L	XL	XXL
Chest (to fit):	32	36	40	44	48	52



EA030

écologie.
by AWDiS

SK513



SK513 SF Ladies Slounge Sweatshirt

Black 100% cotton.
Heather grey 85% cotton/15% viscose.
French terry.
Raglan sleeves.
Relaxed fit.
Wide neckline.
Ribbed collar, cuffs and hem with twin needle stitching.
Tear out label.

Weight: 250 gsm

Size:	S	M	L	XL
Ladies size:	10	12	14	16
Chest (to fit):	32/34	34/36	36/38	38/40



Sedex

Tear Out

KB471



KARIBAN

KB471 Kariban Ladies Oversized Sweatshirt

91% cotton/9% polyester.*
Ultra-soft, french terry fabric.
Loose, relaxed fit.
Wide neck.
Twill taped neck.
Side seams.
Twin needle sleeves.
Raw edge hem.

Weight: 270 gsm

Size:	S/M	L/XL
Ladies size:	10/12	12/14

*Light grey 87% cotton/9% polyester/4% viscose.



JH036

JustHoods
AWDis

JH036 AWDIs Ladies Fashion Sweatshirt

80% ringspun cotton/20% polyester.*
Soft cotton faced fabric. Brushed back fleece.
Drop shoulder style. Ladies fit.
Scoop ribbed collar, cuffs and hem.
Long length. Twin needle stitching.
Tear out label.

Weight: 280 gsm

Size:	XS	S	M	L	XL
Ladies size:	8	10	12	14	16

*Charcoal 52% cotton/48% polyester.

**Heather grey 75% cotton/25% polyester.



Sedex

AB APPROVED
VEGAN

Tear Out

BL7501 Bella+Canvas Ladies Tri-Blend Sponge Fleece Wide Neck Sweatshirt

50% polyester/37.5% ringspun combed cotton/12.5% rayon.
Off the shoulder style with wide neck.
Wide ribbed hem and cuffs.

Weight: 280 gsm

Size:	S	M	L	XL
Ladies size:	6/8	10/12	14/16	18/20
Chest (to fit):	30/32	32/34	34/36	36/38



M128



mantis

M128 Mantis Flash Dance Sweatshirt

Black and white 80% OCS certified organic cotton/20% recycled PET french terry.
Heather marl 85% OCS certified cotton/8% recycled PET french terry/7% viscose.
Loose fit. Raglan sleeves.
Wide, off the shoulder raw edge neckline.
3/4 length roll-up sleeves.
Straight open hem.
Tear out label.

Weight: 300 gsm

Size:	S	M	L	XL
Ladies size:	8/10	12	14	16/18
Chest (to fit):	32/34	35/37	38/40	41/43



Tear Out

AB APPROVED
VEGAN

BL7501

BELLA+CANVAS





JH035

JustHoods®
AWDis



SK515 SF
Ladies Cropped Slounge Sweatshirt

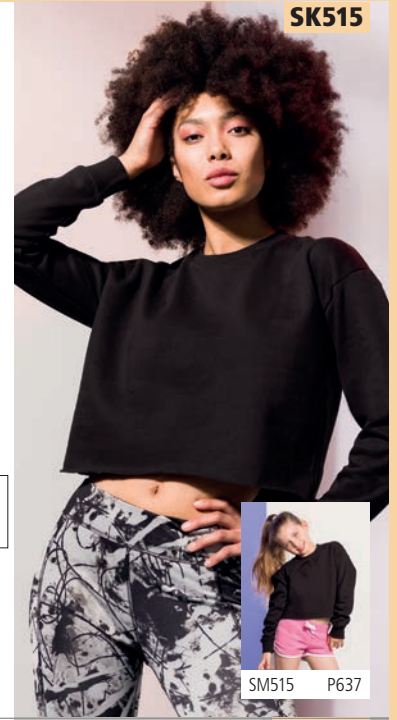
Black 80% cotton/20% polyester.
Heather grey 70% cotton/30% polyester.
Brushed back fleece.
Drop shoulder style.
Oversized fit.
2x2 ribbed collar and cuffs.
Taped neck.
Cropped length.
Raw edge hem.
Tear out label.

Weight: 280 gsm

Size:	XS	S	M	L	XL
Ladies size:	8	10	12	14	16
Chest (to fit):	30/32	32/34	34/36	36/38	38/40



Tear Out



SK515

SM515 P637

JH035 AWDIs
Ladies Cropped Sweatshirt

80% ringspun cotton/20% polyester.*
Soft cotton faced fabric. Brushed back fleece.
Drop shoulder style. Relaxed fit.
Ribbed collar and cuffs.
Cropped length.
Raw edge hem with cover stitching.
Twin needle stitching. Tear out label.

Weight: 280 gsm

Size:	XXS	XS	S	M	L	XL
Ladies size:	6	8	10	12	14	16

*Heather grey 75% cotton/25% polyester.



Tear Out

BELLA+CANVAS
BL7505 Bella+Canvas
Ladies Raglan Cropped Pullover Sweatshirt

52% airlume combed ringspun cotton/48% polyester. Brushed back fleece.
Raglan sleeves.
Self fabric bound collar.
Cropped length.
Ribbed cuffs and hem.
Tear out label.

Weight: 230 gsm

Size:	S	M	L
Ladies size:	6/8	10/12	14/16
Chest (to fit):	30/32	32/34	34/36
Size:	XL	XXL	
Ladies size:	18/20	22/24	
Chest (to fit):	36/38	38/40	



Tear Out



BL7505

NEW

BL7503 Bella+Canvas
Ladies Cropped Sweatshirt

52% airlume combed ringspun cotton/48% polyester.
Brushed back fleece. Drop shoulder style.
Ribbed collar and cuffs.
Unfinished raw hem. Tear out label.

Weight: 220 gsm

Size:	S	M	L	XL
Ladies size:	6/8	10/12	14/16	18/20
Chest (to fit):	30/32	32/34	34/36	36/38



Tear Out



BL7503

BELLA+CANVAS



TL533 Tombo
Ladies Cropped Sweatshirt

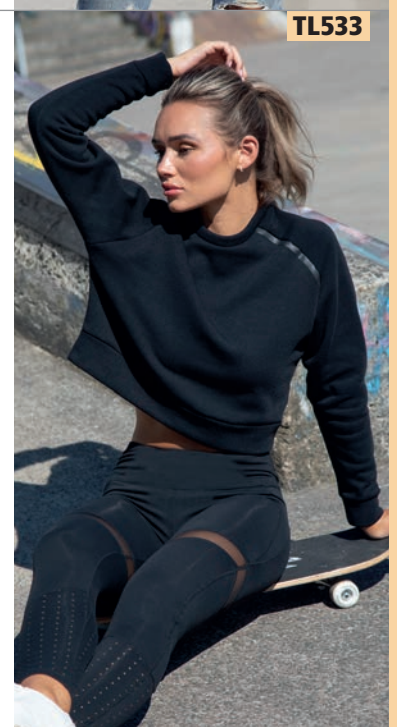
100% polyester.
Brushed back fleece.
Cropped boxy fit.
Self fabric collar, cuffs and hem.
Raglan sleeves with rubber tape insert on front left seam.
Tear out label.

Weight: 250 gsm

Size:	XS	S	M
Ladies size:	8	10	12
Chest (to fit):	30/32	32/34	34/36
Size:	L	XL	XXL
Ladies size:	14	16	18
Chest (to fit):	36/38	38/40	40/42



Tear Out



TL533

Just Hoods®

NEW & ORGANIC

ORGANIC & RECYCLED
Organic
SUSTAINABLE
Recycled
ORGANIC & RECYCLED



JH230 Organic Sweatshirt / XS-XXL P222

80% organic cotton / 20% recycled polyester

AWDiS

PCTA - APPROVED
VEGAN

JH033

Just Hoods®
AWDiS



JH033 AWDiS Baseball Sweatshirt

80% ringspun cotton/20% polyester.*
Soft cotton faced fabric. Brushed back fleece.
Retro fashion fit. Contrast raglan sleeves.
Ribbed collar, cuffs and hem.
Twin needle stitching.
Tear out label.



Weight: 280 gsm

Size:	S	M	L	XL	XXL
Chest (to fit):	36	40	44	48	52



Sedex
AN APPROVED
VEGAN

*Charcoal 52% cotton/48% polyester.

**Heather grey 75% cotton/25% polyester.

264M Russell Authentic Baseball Sweatshirt



75% combed ringspun cotton/21% polyester/4% viscose.*
Brushed back fleece. 100% cotton outer layer. Straight modern cut. Elastane ribbed collar, cuffs and hem. Herringbone taped neck. V detail at front neck. Half moon neck insert. Contrast raglan sleeves. Coverseamed armholes, cuffs and hem. Unbranded size label.

Weight: 280 gsm

Size:	XS	S	M	L	XL	XXL	3XL
Chest (to fit):	34/36	36/38	38/40	40/42	42/44	44/46	46/48

*Carbon melange/black 77% cotton/23% polyester.

X
No Label

264M





FR840

FRONT ROW & CO
HERITAGE CLOTHING

FR840 Front Row Unisex Striped Cuff Sweatshirt

70% cotton/30% polyester.
Brushed back fleece. Drop shoulder style.
1x1 elastane ribbed collar, cuffs and hem.
Herringbone taped neck. Contrast stripe detail on cuffs and hem. Tag free.

Weight: 280 gsm

Size:	XS	S	M	L	XL	XXL
Chest (to fit):	34/36	36/38	38/40	42	44/46	48



JH038

Just Hoods®
AWDis

JH038 AWDIs Colour Block Sweatshirt

Heather grey 75% ringspun cotton/25% polyester.
Deep black and new french navy 80% ringspun cotton/20% polyester.
Soft cotton faced fabric. Brushed back fleece. Drop shoulder style.
Stylish fit. Ribbed collar, cuffs and hem. Taped neck.
Contrast lower body and sleeve panels. Twin needle stitching. Tear out label.

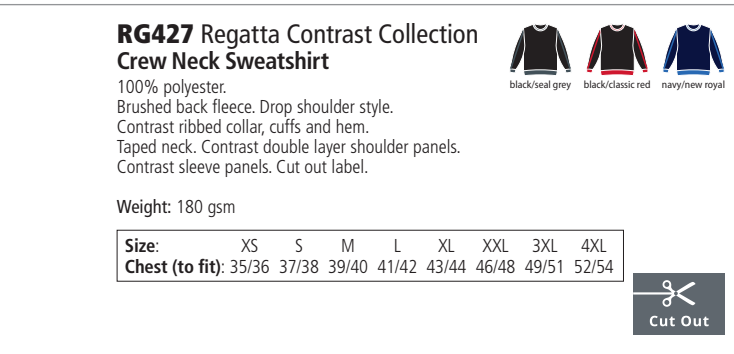
Weight: 280 gsm

Size:	XS	S	M	L	XL	XXL
Chest (to fit):	34	36	40	44	48	52



AN APPROVED
VEGAN

Tear
Out



RG427 Regatta Contrast Collection Crew Neck Sweatshirt

100% polyester.
Brushed back fleece. Drop shoulder style.
Contrast ribbed collar, cuffs and hem.
Taped neck. Contrast double layer shoulder panels.
Contrast sleeve panels. Cut out label.

Weight: 180 gsm

Size:	XS	S	M	L	XL	XXL	3XL	4XL
Chest (to fit):	35/36	37/38	39/40	41/42	43/44	46/48	49/51	52/54



SF523 SF Unisex Contrast Raglan Sweatshirt

60% cotton/40% polyester.
Brushed back fleece.
Unisex oversized fit.
1x1 deep ribbed collar, cuffs and hem. Taped neck.
Raglan sleeves with contrast polyester stripe - suitable for sublimation printing.
Tear out label.

Weight: 250 gsm

Size:	XXS	XS	S	M
Chest (to fit):	32/34	34/36	36/38	38/40
Size:	L	XL	XXL	
Chest (to fit):	42	44/46	48	



Sedex®

Tear
Out



RG427 [TRF527]

CONTRAST
REGATTA
PROFESSIONAL



SF523



228 ZIP NECK SWEATSHIRTS

JH046

JustHoods®
AWDis



JH046 AWDIs Sophomore Zip Neck Sweatshirt

80% ringspun cotton/20% polyester.*
Soft cotton faced fabric.
Brushed back fleece.
Zip neck with metal YKK zip.
Ribbed cuffs and hem.
Tear out label.

Weight: 280 gsm

Size:	S	M	L	XL	XXL
Chest (to fit):	36	40	44	48	52

*Charcoal 52% cotton/48% polyester.

**Heather grey 75% cotton/25% polyester.



AN APPROVED
VEGAN

Sedex



Tear Out

GD61 [18800]

GILDAN®
Heavy Blend™



GD61 Gildan Heavy Blend™ Vintage Zip Neck Sweatshirt

50% cotton/50% polyester. Pre-shrunk. Drop shoulder style. Brass zip neck with grey trim. Grey taped neck. Ribbed trim with spandex at cuffs and hem. Twin needle stitching. CPSIA tracking label compliant. Tear out label (some colours in transition).

Weight: 271 gsm

Size:	S	M	L	XL	XXL	3XL
Chest (to fit):	34/36	38/40	42/44	46/48	50/52	54/56



Tear Out

Sedex



SS17 Fruit of the Loom Classic Zip Neck Sweatshirt

80% cotton/20% polyester. Raglan sleeves. Covered zip.
Taped neck. Cotton/Lycra® ribbed cuffs and hem.
Twin needle stitching. Cut out label.

Weight: White and Heather Grey 260 gsm, Cols 280 gsm

Size:	S	M	L	XL	XXL	3XL*
Chest (to fit):	35/37	38/40	41/43	44/46	47/49	50/52

*Available in 3XL.



Cut Out

SS126 Fruit of the Loom Lightweight Zip Neck Sweatshirt

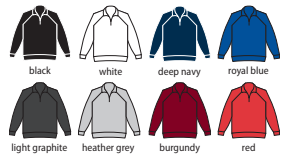
80% cotton/20% polyester.
Raglan sleeves. Covered zip.
Cotton/Lycra® ribbed cuffs and hem.
Twin needle stitching. Cut out label.

Weight: 240 gsm

Size:	S	M	L	XL	XXL
Chest (to fit):	35/37	38/40	41/43	44/46	47/49



Cut Out



SS17 [621140]



NEW
SIZES

SS126 [621580]



270M



270M Russell Authentic Zip Neck Sweatshirt

80% combed ringspun cotton/20% polyester.
Cotton faced fabric. Brushed back fleece. Drop shoulder style with forward facing seams. Self fabric cadet collar. Covered YKK zip. Herringbone taped neck. Self fabric cuffs and hem. Coverseamed around armholes, cuffs and hem.

Weight: 280 gsm



Size:	XS	S	M	L	XL	XXL	3XL	4XL
Chest (to fit):	34/36	36/38	38/40	40/42	42/44	44/46	46/48	48/50

282M Russell HD Zip Neck Sweatshirt

65% polyester/35% ringspun combed cotton.
Raglan sleeves. Self colour plastic zip.
Ribbed collar, cuffs and hem.
Removable adhesive neck label.

Weight: White 250 gsm, Cols 255 gsm



Size:	XS	S	M	L
Chest (to fit):	34/36	36/38	38/40	40/42
Size:	XL	XXL	3XL	
Chest (to fit):	42/44	44/46	46/48	



282M



012M Russell Heavy Duty Collar Sweatshirt

80% ringspun cotton/20% polyester. SpotShield™ stain resistant coating. Taped neck. Locker patch. Double layer fabric shoulders for durability. Three plastic coated metal button placket. Elasticated pen holder on sleeve. Ribbed cuffs with elastane. Drop tail with self fabric trim. 60°C domestic wash.

Weight: 300 gsm

Size:	XS	S	M	L
Chest (to fit):	34/36	36/38	38/40	40/42
Size:	XL	XXL	3XL	4XL
Chest (to fit):	42/44	44/46	46/48	48/50



012M



T5438 Tee Jays Half Zip Sweatshirt

70% ringspun cotton/30% polyester.
Brushed back fleece.
Double dyed.
Drop shoulder style.
Ribbed collar, cuffs and hem with elastane.
Taped neck with contrast stitching.
Two front pockets.
40°C wash.

Weight: 310 gsm

Size:	S	M	L
Chest (to fit):	36/38	38/40	41/42
Size:	XL	XXL	3XL
Chest (to fit):	43/44	45/47	47/49



T5438



FRUIT OF THE LOOM

SSE17 Fruit of the Loom Premium Zip Neck Sweatshirt

70% cotton/30% polyester.
Raglan style.
Taped neck.
Covered zip.
Cotton/elastane ribbed cuffs and hem.
Twin needle stitching.

Weight: White and Heather Grey 260 gsm,
Cols 280 gsm

Size:	S	M	L	XL	XXL
Chest (to fit):	35/37	38/40	41/43	44/46	47/49



SSE17 [620320]



THIS IS FRONT ROW & CO.

FR 840
Unisex Striped Cuff
SWEATSHIRT

P227

FR 625
Stretch Cargo
TROUSERS

P461

— TAG FREE —



FRONT ROW & CO

HERITAGE CLOTHING



02088

SOL'S
the fair spirit

02088 SOL'S Stan Contrast Zip Neck Sweatshirt

50% cotton/50% polyester.
Brushed back fleece. Drop shoulder style.
Contrast inner placket. Ribbed cuffs and hem.
Unbranded size label at neckline.

Weight: 260 gsm

Size:	S	M	L	XL	XXL	3XL
Chest (to fit):	36/38	38/40	41/42	43/44	45/47	47/49



FR006 Front Row Panelled Zip Neck Top

100% ringspun cotton.
Heavyweight jersey. Self fabric funnel neck. Herringbone taped neck and side vents. Topstitching around neck, armholes and panels.
Metal zip and puller. Contrast stripe panel across chest and sleeves.
Elastane reinforced ribbed cuffs. Side vents.
Drop tail. Twin needle stitching. Tag free.

Weight: 300 gsm

Size:	XS	S	M
Chest (to fit):	34/36	36/38	38/40
Size:	L	XL	XXL
Chest (to fit):	42	44/46	48



FRONT ROW & CO HERITAGE CLOTHING

FR40 Front Row Collection Super Soft Zip Neck Sweatshirt

80% cotton/20% polyester brushed back fleece.
Heavily brushed for a luxurious feel.
Drop shoulder style.
Contrast canvas inside collar, tipped on outside of neck, around cuffs and on inside of hem.
Flat tape detail inside back neck.
Twin needle hexagonal locker patch.
Edge stitch detail around armholes.
Silver coloured zip.
Contrast external flat taped side vents.
Contrast flat tape detail on left side seam.
Stepped hem.
Small branded hem loop label.

Weight: 280 gsm

Size:	S	M	L	XL	XXL
Chest (to fit):	36/38	38/40	42	44/46	48



FR40

FINDEN & HALES

LV338 Finden & Hales Zip Neck Sweatshirt

80% cotton/20% polyester.
Drop shoulder style.
Contrast inner collar and collar trim.
Concealed zip.
Contrast side panels.
Contrast piping underarm on sleeves.
Ribbed cuffs and hem.

Weight: 300 gsm

Size:	S	M	L	XL	XXL
Chest (to fit):	36/38	38/40	42	44/46	48



LV338

KARIBAN

KB206 Kariban Trucker Zip Neck Sweatshirt

80% cotton/20% polyester piqué knit.
Drop shoulder style.
Metal zip.
Contrast inner collar.
Locker patch.
Ribbed cuffs and hem.

Weight: 300 gsm

Size:	M	L	XL	XXL
Chest (to fit):	38	40	42	44/46



Sedex®



KB206



FR006

FRONT ROW & CO
HERITAGE CLOTHING

232 ZIP JACKETS

JH047

JustHoods®
 AWDIs

JH047 AWDIs
Fresher Full Zip Sweatshirt

80% ringspun cotton/20% polyester.*
 Soft cotton faced fabric. Brushed back fleece.
 Drop shoulder style.
 Full length covered metal YKK zip.
 Two front pockets. Ribbed cuffs and hem.
 Tear out label.

Weight: 280 gsm

Size:	S	M	L	XL	XXL
Chest (to fit):	36	40	44	48	52

*Charcoal 52% cotton/48% polyester.

**Heather grey 75% cotton/25% polyester.



267M


267M Russell
Authentic Sweat Jacket

80% ringspun combed cotton/20% polyester.
 Drop shoulder style. Cadet collar. Covered antique silver zip. Self colour herringbone taped neck.
 Forward shoulder seams. Two front pockets.
 Ribbed cuffs and hem.

Weight: 280 gsm

Size:	XS	S	M	L
Chest (to fit):	34/36	36/38	38/40	40/42
Size:	XL	XXL	3XL	4XL*
Chest (to fit):	42/44	44/46	46/48	48/50

*Available in 4XL.


K334 Kustom Kit
Sweat Jacket

80% cotton/20% polyester.
 Drop shoulder style. Self colour cadet collar.
 Taped neck and shoulders. Full length reverse tape zip.
 Two front pockets. Ribbed cuffs and hem.
 Tear out label.

Weight: 280 gsm

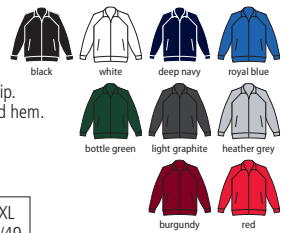
Size:	XS	S	M	L	XL	XXL
Chest (to fit):	32/34	36/38	40	42	44	46/48


SS127 Fruit of the Loom
Lightweight Sweat Jacket

80% cotton/20% polyester.
 Unbrushed. Raglan sleeves. Full length covered zip.
 Two front pockets. Cotton/Lycra® ribbed cuffs and hem.
 Twin needle stitching. Cut out label.

Weight: 240 gsm

Size:	S	M	L	XL	XXL
Chest (to fit):	35/37	38/40	41/43	44/46	47/49



K334

KUSTOM KIT®



SS127 [621600]



47200

SOL'S
the fair spirit


47400 P233



47200 SOL'S Sundae Sweat Jacket

50% cotton/50% polyester.
Brushed back fleece. Raglan sleeves.
Full length zip. 2x2 ribbed collar, cuffs and hem.
Taped neck. Two front pockets.
Flatlock stitching detail.

Weight: 280 gsm

Size:	S	M	L	XL	XXL
Chest (to fit):	36/38	38/40	41/42	43/44	45/47

SS92 [622300]



SS79 P233



SS92B P638



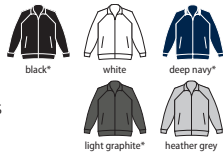
SS92 Fruit of the Loom Classic Sweat Jacket

80% cotton/20% polyester.
Raglan sleeves. Full length covered metal zip.
Taped neck. Two front pockets. Cotton/Lycra® ribbed cuffs and hem. Twin needle stitching. Cut out label.

Weight: White and Heather Grey 260 gsm, Cols 280 gsm

Size:	S	M	L	XL	XXL	3XL*
Chest (to fit):	35/37	38/40	41/43	44/46	47/49	50/52

*Available in 3XL.



SS79 Fruit of the Loom Premium Lady Fit Sweat Jacket

70% cotton/30% polyester.
Raglan sleeves. Ladies fit. Full length covered metal zip.
Taped neck. Front pouch pockets.
Cotton/elastane ribbed cuffs and hem. Cut out label.

Weight: White and Heather Grey 260 gsm, Cols 280 gsm

Size:	XS	S	M	L	XL	XXL
Ladies size:	8	10	12	14	16	18
Chest (to fit):	30	32	34	36	38	40



47400

SOL'S
the fair spirit


47200 P233



47400 SOL'S Ladies Soda Sweat Jacket

50% cotton/50% polyester.
Brushed back fleece. Raglan sleeves.
Ladies fit. Full length zip. 2x2 ribbed collar, cuffs and hem.
Taped neck. Two front pockets. Flatlock stitching detail. This item runs small in comparison to some other brands. Please check sizing before decoration.

Weight: 280 gsm

Size:	S	M	L	XL	XXL
Ladies size:	8/10	10/12	12/14	14/16	16/18



SS79 [621160]



SS92 P233



SS92B P638



234 BASEBALL SWEAT JACKETS

SF511


SF511 SF
Unisex Bomber Sweat Jacket

70% cotton/30% polyester.
 Brushed back fleece. Ribbed collar, cuffs and hem.
 Full length metal YKK zip. Taped neck.
 Two front pockets. Tear out label.

Weight: 330 gsm



Tear Out

Size:	XS	S	M	L	XL	XXL
Chest (to fit):	34/36	36/38	38/40	42	44/46	48

JH041

JustHoods®
 AWDIs

JH041 AWDIs
College Jacket

80% ringspun cotton/20% polyester.*
 Soft cotton faced fabric. Brushed back fleece.
 Knitted collar, cuffs and hem with stripe detail.
 Taped neck with hanging loop.
 Stud closure with white coloured studs.
 Two welt pockets.
 Tear out label.

Weight: 280 gsm



Tear Out

Size:	XS	S	M	L	XL	XXL
Chest (to fit):	32	34	38	42	46	50

*Heather grey 75% cotton/25% polyester.

GH064 Gildan
Hammer Full Zip Sweat Jacket

Black 80% combed ringspun cotton/20% polyester.
 Graphite heather 60% cotton/40% polyester.
 Soft cotton faced fabric. Rolled forward shoulders. Classic fit.
 1x1 ribbed collar, cuffs and hem with spandex. Half moon locker patch.
 Full length zip. Front pouch pockets. Single needle topstitched side seams.
 Twin needle stitching. Tear out label.

Weight: 305 gsm



Tear Out

Size:	S	M	L
Chest (to fit):	34/36	38/40	42/44
Size:	XL	XXL	3XL
Chest (to fit):	46/48	50/52	54/56


NX9700 Next Level
Unisex PCH Bomber Jacket

60% cotton/40% polyester. Brushed back fleece.
 Raglan sleeves. Solid black ribbed collar, cuffs and hem.
 Locker patch. Full length antique brass YKK zip. Two front pockets. Tear out label.

Weight: 250 gsm



Tear Out

Size:	XS	S	M	L	XL	XXL	3XL
Chest (to fit):	33/35	35/38	38/41	43/44	45/48	48/52	53.5/56

GH064 [HF700]



NX9700



JH043F

JustHoods
AWDis



JH043 P235



JH043B P638

JH043F AWDIs Ladies Varsity Jacket

70% ringspun cotton/30% polyester.*
Soft cotton faced fabric. Brushed back fleece. Ladies fit.
Knitted collar, cuffs and hem with stripe detail.
Taped neck with hanging loop. Contrast sleeves.
Contrast stud closure. Two welt pockets. Tear out label.

Weight: 330 gsm

Size:	XS	S	M	L	XL
Ladies size:	8	10	12	14	16

*Heather grey 65% cotton/35% polyester.



Sedex { NEW APPROVED } **VEGAN**

JH043

JustHoods
AWDis



JH043F P235



JH043B P638

JH043 AWDIs Varsity Jacket

70% ringspun cotton/30% polyester.*
Soft cotton faced fabric. Brushed back fleece. Knitted collar, cuffs and hem with stripe detail. Taped neck with hanging loop. Contrast sleeves. Contrast stud closure. Two welt pockets. Tear out label.

Weight: 330 gsm

Size:	XS	S	M	L	XL	XXL	3XL
Chest (to fit):	32	34	38	42	46	50	54

*Charcoal 52% cotton/48% polyester.

**Heather grey 65% cotton/35% polyester.

▲Available in 3XL.



{ NEW APPROVED } **VEGAN**

KB6132 Kariban Knitted Blazer

Night navy heather 80% polyester/18% cotton/2% elastane.
Light grey heather 74% polyester/24% viscose/2% elastane.
Interlock knit. Poly/cotton lined body, taffeta lined sleeves. Two button single breasted.
Buttonhole on lapel. Left chest pocket. Two inner button pockets and one media pocket.
Two front pockets with flaps. Double vented back. Four button cuffs with contrast stitched buttonhole. Zip access at left chest for decoration.

Weight: 250 gsm

Chest (to fit):	38	40	42	44	46	48	50
European size:	48	50	52	54	56	58	60



KB6133 Kariban Ladies Knitted Blazer

Night navy heather 80% polyester/18% cotton/2% elastane.
Light grey heather 74% polyester/24% viscose/2% elastane.
Interlock knit. Poly/cotton lined body, taffeta lined sleeves. Single button closure.
Inner button pocket. Two front welt pockets. Centre back vent. Three button cuffs with contrast stitched buttonhole. Zip access at left chest for decoration.

Weight: 250 gsm

Ladies size:	8	10	12	14	16	18	20
European size:	34	36	38	40	42	44	46



KB6132

KARIBAN



KB6133 P235

KB6133

KARIBAN



KB6132 P235

T5430 Hooded Sweatshirt P260
T5431 Ladies Raglan Hooded Sweatshirt P265

luxury sweat

PREMIUM CASUAL APPAREL



T5435 Fashion Zip Hooded Sweatshirt P280

Our collection of luxury college sweats are cool and casual with a sporty feel. Crafted from long-fibre 310-320 gsm cotton, the sweatshirts have a lightweight feel and an extremely smooth and soft surface. Ideal for a casual vibe and all-day comfort.

teejays



T5436 Ladies Fashion Zip Hooded Sweatshirt P285



JH072

JustHoods®
AWDis



JH072B P647



JH072 AWDIs College Cuffed Jog Pants

80% ringspun cotton/20% polyester.*
Soft cotton faced fabric. Brushed back fleece.
Elasticated waistband with inner drawcord.
Two side pockets. Cuffed leg opening. Tear out label.

Weight: 280 gsm

Size:	S	M	L	XL	XXL
Waist (to fit):	30	32	34	36	38

*Charcoal 52% cotton/48% polyester.
**Heather grey 75% cotton/25% polyester.



Sedex { AW-APPROVED } VEGAN

SS15 Fruit of the Loom Classic Elasticated Hem Jog Pants

80% cotton/20% polyester.*
Elasticated waistband with inner drawcord. Deep pockets.
Elasticated leg ends. Cut out label.

Weight: White and Heather Grey 260 gsm, Cols 280 gsm

Size:	S	M	L	XL	XXL	3XL**
Waist (to fit):	32	34	36	38	40	42
Leg length:	31	31.5	32	32.5	32.5	33

*Dark heather 60% cotton/40% polyester. **Available in 3XL.

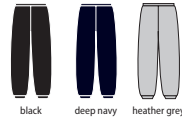


SSE15 Fruit of the Loom Premium Jog Pants

70% cotton/30% polyester.
Elasticated waistband with inner drawcord.
Two side pockets.
Elasticated leg ends.
Cut out label.

Weight: Heather Grey 260 gsm, Cols 280 gsm

Size:	S	M	L	XL	XXL
Waist (to fit):	32	34	36	38	40
Leg length:	31	31.5	32	32.5	32.5



SS13 Fruit of the Loom Classic Open Hem Jog Pants

80% cotton/20% polyester.*
Elasticated waistband with inner drawcord.
Deep side pockets.
Open leg ends.
Cut out label.

Weight: Heather Grey 260 gsm, Cols 280 gsm

Size:	S	M	L	XL	XXL	3XL**
Waist (to fit):	32	34	36	38	40	42
Leg length:	31	31.5	32	32.5	32.5	33

*Dark heather 60% cotton/40% polyester.
**Available in 3XL.



SS125 Fruit of the Loom Lightweight Jog Pants

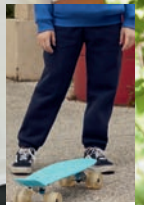
80% cotton/20% polyester.
Elasticated waistband with inner drawcord.
Two side pockets.
Open leg ends.
Cut out label.

Weight: 240 gsm

Size:	S	M	L	XL	XXL
Waist (to fit):	32	34	36	38	40
Leg length:	31	31.5	32	32.5	32.5



SSE15 [640400]



SSE15B Online

SS13 [640320]



SS125 [640380]



SS15 [640260]



SS15B P647



238 JOG PANTS

SWEATS

GD66 [C18120]



GILDAN®
Heavy Blend™

GD66 Gildan Heavy Blend™ Cuffed Sweat Pants

50% cotton/50% polyester.
Air jet yarn, softer feel and reduced pilling.
Pre-shrunk.
Elasticated waistband with self colour drawcord.
Two jersey lined side pockets.
Ribbed cuffed leg ends. Twin needle hem.
Tear out label (some colours in transition).

Weight: 271 gsm

Size:	S	M	L	XL
Waist (to fit):	26	28	30	32
Size:	XXL	3XL	4XL	5XL
Waist (to fit):	36/38	40/42	44/46	48/50



Sedex®

Tear Out

268M



268F Online

R
russell

268M Russell Authentic Jog Pants

80% ringspun combed cotton/20% polyester.
Ribbed waistband with self colour chunky drawcord.
Two side zip pockets.
Rear patch pocket.
Ribbed cuffed leg ends.

Weight: 280 gsm

Size:	S	M	L	XL	XXL
Waist (to fit):	30	32	34	36	38



K933



KUSTOM KIT

K933 Kustom Kit Slim Fit Sweat Pants

65% polyester/35% cotton.
Ribbed elasticated waistband with self colour drawcord. Two jersey lined side pockets.
Rear patch pocket. Ribbed cuffed leg ends.
Tear out label.

Weight: 250 gsm

Size:	XS	S	M
Waist (to fit):	26/28	29/31	32/34
Size:	L	XL	XXL
Waist (to fit):	35/36	37/38	39/40



Sedex®

Tear Out

JH074

JustHoods®
AWDis



JH077 P240



JH074B P647

JH074 AWDIs

Tapered Track Pants

80% ringspun cotton/20% polyester.*
Soft cotton faced fabric. Brushed back fleece. Modern tapered slim fit. Elasticated waistband with drawcord.
Two side pockets. Ribbed cuffed leg ends. Tear out label.

Weight: 280 gsm

Size:	S	M	L	XL	XXL
Waist (to fit):	30	32	34	36	38

*Green camo 70% cotton/30% polyester.

**Charcoal 52% cotton/48% polyester.

▲Heather grey 75% cotton/25% polyester.



Tear Out



Sedex®

WR APPROVED VEGAN

SF425 SF Men

Slim Cuffed Jog Pants

60% cotton/40% polyester.*
Brushed back fleece. Ribbed elasticated waistband with flat lace drawcord. Two curved side pockets. Right rear patch pocket.
Ribbed cuffed leg ends. Tear out label.

Weight: 250 gsm

Size:	S	M	L	XL	XXL
Waist (to fit):	32	34	36	38	40

*Heather grey 75% cotton/20% polyester/5% viscose.



Tear Out

Sedex®

SF425



SK425 P240



SM425 P647





02084

SOL'S
the fair spirit



02085 P240

02084 SOL'S

Jake Slim Fit Jog Pants

50% cotton/50% polyester.*
Ribbed waistband with self colour drawcord.
Two side pockets. Right rear patch pocket.
Ribbed cuffed leg ends. Tear out label.



Weight: 240 gsm

Size:	XS	S	M	L	XL	XXL	3XL
Waist (to fit):	28	30	32	34	36	38	40

*Grey marl 64% cotton/30% polyester/6% viscose.

**Charcoal marl 60% cotton/40% polyester.



CV3727 Bella+Canvas
Unisex Jogger Sweatpants

52% airlume combed ringspun cotton/48% polyester. Brushed back fleece.
Elasticated waistband with white drawcord.
Two side pockets. Ribbed cuffed leg ends.



Weight: 220 gsm

Size:	XS	S	M	L	XL	XXL
Waist (to fit):	24/26	28/30	32/34	36/38	40/42	44/46



CV3727

BELLA+CANVAS



SF423 SF

Unisex Contrast Joggers

60% cotton/40% polyester.
Brushed back fleece. Elasticated waistband with flat lace drawcord. Contrast polyester stripe - suitable for sublimation printing.
Two side pockets. Right rear patch pocket.
Ribbed cuffed leg ends. Tear out label.

Weight: 250 gsm

Size:	XXS	XS	S	M
Waist (to fit):	28	30	32	34
Size:	L	XL	XXL	
Waist (to fit):	36	38	40	



Sedex



SF423

SWEATS

FRONT ROW & CO

HERITAGE CLOTHING

FR640 Front Row
Unisex Striped Cuff Joggers

70% cotton/30% polyester.
Brushed back fleece.
Slim fit. Waistband with drawcord and stitched eyelets. Two side pockets with jersey lining.
Rear pocket. 1x1 elasticated ribbed cuffed leg ends with contrast stripe detail.
Tonal topstitching. Tag free.

Weight: 280 gsm

Size:	XS	S	M	L	XL	XXL
Waist (to fit):	30	32	34	36	38	40
Leg length:	32					



FR640



FRUIT OF THE LOOM

SS150 Fruit of the Loom
Unisex Lightweight Cuffed Jog Pants

80% cotton/20% polyester.
Unisex style. Elasticated waistband with self colour drawcord. Two side pockets. Lycra® ribbed cuffed leg ends. Tear out label.

Weight: 240 gsm

Size:	XS	S	M
Waist (to fit):	28/30	32	34
Leg length:	31	31	31.5
Size:	L	XL	XXL
Waist (to fit):	36	38	40
Leg length:	32	32.5	32.5



SS150 [640460]

JH074B P647

Sodexy²

6.1

SF425	P238	SM425	P647
-------	------	-------	------

100



Fear Out



.....
Tear

black




K922
KUSTOM KIT
K922 Kustom Kit Slim Fit Sweat Shorts

65% polyester/35% cotton.
1x1 ribbed elasticated waistband with flatlock edge. Self colour flat drawcord with brushed metal eyelets.
Two side jersey lined pockets.
Right rear patch pocket.
Twin needle hem.
Tear out label.

Weight: 250 gsm

Size:	XS	S	M
Waist (to fit):	26/28	29/31	32/34
Size:	L	XL	XXL
Waist (to fit):	35/36	37/38	39/40


SS124 [640360]

SS124 Fruit of the Loom Lightweight Shorts

80% cotton/20% polyester.
Elasticated waistband with inner drawcord.
Two side pockets.
Cut out label.

Weight: 240 gsm

Size:	S	M	L	XL	XXL
Waist (to fit):	32	34	36	38	40


SK427

SK427 SF Ladies Fashion Cycling Shorts

88% polyester/12% elastane.
Single jersey.
Brushed back soft jacquard waistband.
Non-transparent.
Tear out label.

Weight: 280 gsm

Size:	XS	S	M	L	XL
Ladies size:	8	10	12	14	16
Waist (to fit):	26	28	30	32	34


JustHoods®
AWDIs

JH080 AWDIs Campus Shorts

70% ringspun cotton/30% polyester.*
Soft cotton faced fabric.
Brushed back fleece.
Deep ribbed waistband with flat cream drawcord.
Two side pockets.
Right rear patch pocket.
Tear out label.

Weight: 330 gsm

Size:	S	M	L	XL	XXL
Waist (to fit):	30	32	34	36	38

*Charcoal 52% cotton/48% polyester.
**Heather grey 65% cotton/35% polyester.


JH080
KARIBAN
KB710 Kariban Fleece Shorts

80% combed cotton/20% polyester.
Low shrinkage french terry fabric.
Deep waistband with contrast drawcord.
Two front pockets and rear pocket with raw edges.
Twin needle stitching.

Weight: 280 gsm

Size:	S	M	L	XL	XXL
Waist (to fit):	30	32	34	36	38


KB710

SK69 SF Ladies Retro Shorts

100% cotton single jersey.*
Elasticated waistband with contrast drawcord.
Contrast binding - black/black has self colour.
Tear out label.

Weight: 220 gsm

Size:	XS	S	M	L	XL	XXL
Ladies size:	8	10	12	14	16	18
Waist (to fit):	26	28	30	32	34	36

*Heather grey 85% cotton/15% viscose.


SK69

SM69 P662

SF69 Online

KARIBAN
BRANDS

SWEATS

LADIES OVERSIZED SWEATSHIRT

ULTRA-SOFT, FRENCH TERRY FABRIC, LOOSE, RELAXED FIT

KB471

P224

No LaBeL



FR1

FRONT ROW & CO
HERITAGE CLOTHING

FR3

FRONT ROW & CO
HERITAGE CLOTHING

SWEATS

**FR3 Front Row
Short Sleeve Rugby Shirt**

100% ringspun cotton.
Heavyweight. Traditional woven rugby collar with cotton webbing.
Rubber buttons. Taped neck, shoulders and side vents. Locker patch.
Twin needle sleeves and hem. For leisure use only.

Weight: 300 gsm

Size:	S	M	L	XL	XXL
Chest (to fit):	36/38	38/40	42	44/46	48

**FR43 Front Row
Collection Super Soft Rugby Shirt**

100% combed cotton brushed single jersey.
Heavily brushed for a luxurious feel. Two piece shirt style collar.
Single jersey self fabric top collar. Tonal canvas collar stand and under collar. Flat tape detail inside neck. Two button concealed placket with contrast canvas inner placket and box stitch detail. Twin needle hexagonal locker patch. Contrast tape detail on left side seam. Contrast external flat taped side vents. Tonal canvas detail on inside of hem.
Small hem loop label. Ribbed cuffs. Stepped hem. Printed back neck. For leisure use only.

Weight: 260 gsm

Size:	S	M	L	XL	XXL
Chest (to fit):	36/38	38/40	42	44/46	48



FR43

FRONT ROW & CO
HERITAGE CLOTHING**FR1 Front Row
Original Rugby Shirt**

100% ringspun combed cotton single jersey.
Heavyweight.
Traditional woven rugby collar with cotton webbing.
Taped collar and rubber buttons.
Reinforced shoulder seams and side vents.
Locker patch.
Elastane ribbed cuffs.
Twin needle hem.
For leisure use only.

Weight: 300 gsm

Size:	S	M	L	XL	XXL	3XL*
Chest (to fit):	36/38	38/40	42	44/46	48	50/52

*Available in 3XL.



FR100

FRONT ROW & CO
HERITAGE CLOTHING



FR101 P244



FR109 P657



FR100 Front Row Classic Rugby Shirt

100% cotton single jersey.
Traditional woven rugby collar with cotton webbing.
Taped shoulders and side vents.
Elastane ribbed cuffs.
Twin needle hem.
For leisure use only.

Weight: 270 gsm



Size:	XS*	S	M	L	XL	XXL	3XL	4XL*	5XL*
Chest (to fit):	34/36	36/38	38/40	42	44/46	48	50/52	52/54	54/56

*Available in XS, 4XL and 5XL.



FR2

FRONT ROW & CO
HERITAGE CLOTHING



FR2 Front Row Quartered Rugby Shirt

100% ringspun cotton single jersey.
Heavyweight. Traditional woven rugby collar with cotton webbing.
Taped collar and rubber buttons. Elastane ribbed cuffs.
Taped shoulders and side vents. Twin needle hem. For leisure use only.

Weight: 300 gsm



Size:	S	M	L	XL	XXL
Chest (to fit):	36/38	38/40	42	44/46	48



FR101 Front Row Ladies Classic Rugby Shirt

100% cotton single jersey.
Semi-fitted style. Traditional rugby collar with cotton webbing.
Taped neck. Concealed three button placket. Elastane ribbed cuffs.
Taped side vents. Twin needle hem. For leisure use only.

Weight: 270 gsm



Size:	XS	S	M	L	XL	XXL	3XL	4XL
Ladies size:	8	10	12	14	16	18	20	22
Chest (to fit):	30/32	32/34	34/36	36/38	38/40	40/42	42/44	44/46



FR101

FRONT ROW & CO
HERITAGE CLOTHING



FR100 P244



FR109 P657



FR7

FRONT ROW & CO
HERITAGE CLOTHING**FR7 Front Row
Panelled Rugby Shirt**

100% ringspun cotton single jersey.
Heavyweight. Traditional white woven collar and inner placket.
Herringbone taped neck and shoulders. Concealed two rubber button placket.
Sewn-in contrast stripe around the body and sleeves. Elastane ribbed cuffs.
Contrast herringbone taped side vents. Twin needle hem. Tag free. For leisure use only.

Weight: 300 gsm



Size:	S	M	L	XL	XXL
Chest (to fit):	36/38	38/40	42	44/46	48

**FR8 Front Row
Sewn Stripe Rugby Shirt**

100% ringspun cotton single jersey.
Heavyweight. Sewn stripes. Traditional woven rugby collar with cotton webbing. Rubber buttons. Taped shoulders. Taped side vents.
Elastane ribbed cuffs. Twin needle hem. For leisure use only.

Weight: 300 gsm



Size:	S	M	L	XL	XXL
Chest (to fit):	36/38	38/40	42	44/46	48



FR8

FRONT ROW & CO
HERITAGE CLOTHING

FR104

FRONT ROW & CO
HERITAGE CLOTHING**FR104 Front Row
Premium Superfit Rugby Shirt**

100% cotton single jersey.
Heavyweight. Super soft peached finish. Slim fit.
Traditional woven rugby collar with cotton webbing.
Contrast trim in back neck. Zig-zag detail on underside of collar.
Self colour plastic buttons with contrast stitching.
Ribbed cuffs. Side vents with contrast tape detail. Twin needle hem.
Tag free. For leisure use only.

Weight: 300 gsm



Size:	XS	S	M	L	XL	XXL	3XL
Chest (to fit):	34/36	36/38	38/40	42	44/46	46/48	48/50



Standard weight hoodies	247 - 253
Standard weight organic hoodies	255
Marl, melange & washed hoodies	256 - 257
Heavyweight hoodies	259 - 261
Heavyweight organic hoodies	263
Ladies hoodies	264 - 265
Ladies cropped hoodies	266
Ladies long & dress hoodies	267
Contrast hoodies	268 - 271
All in one	271
Zip hoodies	272 - 277
Marl & melange zip hoodies	278 - 279
Heavyweight zip hoodies	280 - 281
Contrast zip hoodies	282 - 283
Ladies zip hoodies	284 - 285

Just Hoods®

FOR PLENTY OF CHOICE • FOR PLENTY OF CHOICE •
Now in
74
Colours



NEW COLOURS

JH001 College Hoodie / XS-5XL*
P247

Red Rust Dusty Green Shark Grey

AWDis

Great for
DTG PRINTING

Great for
EMBROIDERY

Great for
SCREEN PRINT

Great for
TRANSFERS

{ PETA - APPROVED
VEGAN }

*All colours available in XS-3XL with only selected colours in 4XL and 5XL

JustHoods®
AWDis

JH001F P264



JH001B P640

NEW
COLOURS**JH001 AWDIs
College Hoodie**

80% ringspun cotton/20% polyester.*
Soft cotton faced fabric.
Brushed back fleece.
Drop shoulder style.
Double fabric hood with self colour drawcord.
Front pouch pocket.
Ribbed cuffs and hem.
Twin needle stitching.
Tear out label.

Weight: 280 gsm

Size:	XS	S	M	L	XL	XXL	3XL	4XL [■]	5XL [■]
Chest (to fit):	34	36	40	44	48	52	56	60	62

*Smoke colours 70% cotton/30% polyester.

**Charcoal 52% cotton/48% polyester.

▲Heather grey 75% cotton/25% polyester.

■Available in 4XL and 5XL.



Sedex®



248 STANDARD WEIGHT HOODIES

GD57 [18500]

GILDAN®
Heavy Blend™



GD57B P641



GD57 Gildan Heavy Blend™ Hooded Sweatshirt

50% cotton/50% polyester.
Pre-shrunk. Air jet yarn, softer feel and reduced pilling. Drop shoulder style.
Double fabric hood with self colour drawcord. Front pouch pocket. Ribbed trim with spandex at cuffs and hem. Twin needle stitching. Tear out label (some colours in transition).

Weight: White 257 gsm, Cols 271 gsm

Size:	S	M	L	XL	XXL	3XL*	4XL*	5XL*
Chest (to fit):	34/36	38/40	42/44	46/48	50/52	54/56	58/60	62/64

*Available in 3XL, 4XL and 5XL.



47101

SOL'S®
the fair spirit



47101 SOL'S Unisex Snake Hooded Sweatshirt

50% cotton/50% polyester.
Brushed back fleece. Drop shoulder style. Fitted style.
Unlined hood with flat self colour drawcord. Front pouch pocket.
Elastane ribbed cuffs and hem.
Twin needle stitching. Unbranded size label at neckline.

Weight: 280 gsm

Size:	S	M	L	XL	XXL	3XL	4XL*
Chest (to fit):	36/38	38/40	41/42	43/44	45/47	47/49	50/52

*Available in 4XL.



JH002 AWDIs SupaSoft Hoodie

80% ringspun cotton/20% polyester.
Soft feel peached fabric. Brushed back fleece. Drop shoulder style. Three panel, double fabric hood with self colour flat drawcord. Front pouch pocket. Ribbed cuffs and hem. Twin needle stitching. Tear out label.

Weight: 280 gsm

Size:	XS	S	M	L	XL	XXL
Chest (to fit):	34	36	40	44	48	52

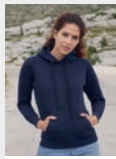


JH002

JustHoods®
AWDis



SS14 [622080]



SS801 P264



SS14B P641



SS14 Fruit of the Loom Classic Hooded Sweatshirt

80% cotton/20% polyester.* Drop shoulder style. Double thickness hood with drawcord. Front pouch pocket. Cotton/Lycra® ribbed cuffs and hem. Twin needle stitching. Cut out label.

Weight: White and Heather
Grey 260 gsm, Cols 280 gsm

Size:	S	M	L
Chest (to fit):	35/37	38/40	41/43
Size:	XL	XXL	3XL**▲
Chest (to fit):	44/46	47/49	50/52
Size:	4XL▲	5XL■	
Chest (to fit):	53/55	56/58	

*Dark heather, heather royal, heather green, heather navy and heather red 60% cotton/40% polyester.

**Available in 3XL. ▲Available in 3XL and 4XL.

■Available in 3XL, 4XL and 5XL.



K333 Kustom Kit Hoodie

80% cotton/20% polyester. Drop shoulder style. Two panel jersey lined hood with flat lace drawcord. Taped neck and shoulders. Front pouch pocket. Ribbed cuffs and hem. Twin needle stitching. Tear out label.

Weight: 280 gsm

Size:	XXS	XS	S	M	L
Chest (to fit):	28/30	32/34	36/38	40	42
Size:	XL	XXL	3XL	4XL*	
Chest (to fit):	44	46/48	50/52	54/56	

*Available in 4XL.



Sedex

Tear Out

K333

KUSTOM KIT.



RX350

PRO RTX



NEW COLOURS

RX350 PRO RTX

Pro Hoodie

55% polyester/45% cotton. Modern fit. Lined hood. Self colour adjustable drawcord. Front pouch pocket. Ribbed cuffs and hem. Twin needle stitching. 60°C wash.

Weight: 300 gsm

Size:	S	M	L	XL	XXL
Chest (to fit):	36	40	44	48	52
Size:	3XL	4XL	5XL	6XL*	7XL*
Chest (to fit):	56	60	62	64	66

*Available in 6XL and 7XL.



Sedex



250 STANDARD WEIGHT HOODIES

02991

SOL'S
the fair spirit



02991 SOL'S

Unisex Spencer Hooded Sweatshirt

80% ringspun cotton/20% polyester. * Cotton faced fabric. Brushed back fleece. Drop shoulder style. Lined hood with self colour drawcord. Taped neck. Locker patch. 2x2 ribbed cuffs and hem. Front pouch pocket. Unbranded size label at neckline.

Weight: 280 gsm

Size:	XS	S	M	L
Chest (to fit):	35/36	36/38	38/40	41/42
Size:	XL	XXL	3XL	
Chest (to fit):	43/44	45/47	47/49	

*Charcoal marl, heather denim and heather oxblood 60% cotton/40% polyester. **Ash 79% cotton/20% polyester/1% viscose. ▲Grey marl 75% cotton/20% polyester/5% viscose.



265M



265F P264



265B P640



265M Russell

Authentic Hooded Sweatshirt

80% combed ringspun cotton/20% polyester. Cotton faced fabric. Brushed back fleece. Drop shoulder style. Double fabric hood with topstitch detail. Flat lace drawcord with buttonhole eyelets. Taped neck. Front pouch pocket with bartacks. Ear phone access. 1x1 ribbed cuffs and hem. Coverseamed around hood, shoulders, armholes, cuffs and hem.

Weight: 280 gsm

Size:	XS	S	M	L	XL	XXL	3XL	4XL*
Chest (to fit):	34/36	36/38	38/40	40/42	42/44	44/46	46/48	48/50

*Available in 4XL.



SSE14 Fruit of the Loom Premium Hooded Sweatshirt

70% cotton/30% polyester. Drop shoulder style. Double thickness hood with drawcord. Front pouch pocket. Cotton/elastane ribbed cuffs and hem. Twin needle stitching.

Weight: Heather Grey 260 gsm, Cols 280 gsm

Size:	S	M	L	XL	XXL
Chest (to fit):	35/37	38/40	41/43	44/46	47/49



JH004 AWDIs Electric Hoodie

85% polyester/15% ringspun cotton. Brushed back fleece. Drop shoulder style. Double fabric hood with self colour flat lace drawcord. Front pouch pocket with small opening for ear phone cord feed. Ribbed cuffs and hem. Twin needle stitching. Tear out label.

Weight: 280 gsm

Size:	S	M	L	XL	XXL
Chest (to fit):	36	40	44	48	52



SSE14 [621520]



SSE14B Online



JH004

JustHoods
AWDis



JH004B P642



SS104 [621680]



SS104 Fruit of the Loom No Pocket Hoodie

80% cotton/20% polyester.
Brushed back fleece. Drop shoulder style.
Two panel double fabric hood with self colour drawcord.
No front pocket to allow maximum print area. Ribbed cuffs and hem with Lycra®. Twin needle stitching. Tear out label.

Weight: White and Heather Grey 260 gsm, Cols 280 gsm



Size:	XS	S	M	L
Chest (to fit):	32/34	35/37	38/40	41/43
Size:	XL	XXL	3XL	
Chest (to fit):	44/46	47/49	50/52	

281M Russell HD Hooded Sweatshirt

65% polyester/35% ringspun combed cotton.
Single jersey. Raglan sleeves.
Lined hood with self colour flat lace drawcord.
Front pouch pocket. Ribbed cuffs and hem.
Removable adhesive neck label.

Weight: White 250 gsm, Cols 255 gsm



Size:	XS	S	M	L	XL	XXL	3XL
Chest (to fit):	34/36	36/38	38/40	40/42	42/44	44/46	46/48

281M



JH011

JustHoods®
AWDis



JH011 AWDIs Epic Print Hoodie

80% ringspun cotton/20% polyester.* Soft cotton faced fabric. Brushed back fleece. Drop shoulder style. Two panel double fabric hood with flat lace drawcord. No front pocket to allow maximum print area. Ribbed cuffs and hem. Twin needle stitching. Tear out label.

Weight: 280 gsm



Size:	XS	S	M	L
Chest (to fit):	34	36	40	44
Size:	XL	XXL	3XL	
Chest (to fit):	48	52	56	

*Charcoal 52% cotton/48% polyester.

**Heather grey 75% cotton/25% polyester.

Decoration for illustration purposes only.

JH006 AWDIs Sports Polyester Hoodie

100% polyester. Brushed back fleece. Drop shoulder style. Three panel double fabric hood. Self colour round drawcord with metal tips. Front pouch pocket. Self fabric cuffs and hem. Twin needle stitching. Tear out label.

Weight: 200 gsm



Size:	S	M	L	XL	XXL	3XL
Chest (to fit):	36	40	44	48	52	56

JH006

JustHoods®
AWDis



JH006B P642

252 STANDARD WEIGHT HOODIES

CV3719

BELLA+CANVAS.



CV3719 Bella+Canvas Unisex Pullover Hoodie

52% airlume combed ringspun cotton/48% polyester.*
Soft feel fabric. Drop shoulder style. Retail fit.
Unlined hood with white drawcord.
Front pouch pocket.
Ribbed cuffs and hem.
Tear out label.

Weight: DTG 270 gsm, Cols 220 gsm

Size:	XS	S	M
Chest (to fit):	31/34	34/37	38/41
Size:	L	XL	XXL
Chest (to fit):	42/45	46/49	50/53

*DTG 70% airlume combed ringspun cotton/30% polyester.



SF527 SF Unisex Oversized Hoodie

60% cotton/40% polyester.*
Brushed back fleece. Drop shoulder style.
Two panel jersey lined hood with self colour flat lace drawcord.
Taped neck. Front pouch pocket. Deep ribbed cuffs and hem.
Twin needle topstitching. Tear out label.

Weight: 250 gsm

Size:	XXS	XS	S	M
Chest (to fit):	32/34	34/36	36/38	38/40
Size:	L	XL	XXL	
Chest (to fit):	42	44/46	48	

*Heather grey 75% cotton/20% polyester/5% viscose.



Sedex

Tear Out

SF527



NX9303

NL | NEXT LEVEL
APPAREL.

NX9303 Next Level Unisex Fleece Pullover Hoodie

80% cotton/20% polyester.
Brushed back fleece.
Drop shoulder style.
Two panel jersey lined hood with flat natural drawcord. Taped neck. Locker patch.
Front pouch pocket.
1x1 ribbed cuffs and hem.
Tear out label.

Weight: 250 gsm

Size:	XS	S	M	L
Chest (to fit):	33/35	35/38	38/41	43/44
Size:	XL	XXL	3XL	
Chest (to fit):	45/48	48/52	53.5/56	



Tear Out



SS121 [621400]



SS181 P265



SS121B P642

SS121 Fruit of the Loom Lightweight Hooded Sweatshirt

80% cotton/20% polyester.
Raglan sleeves. Hood with self colour flat
drawcord. Front pouch pocket.
Cotton/Lycra® ribbed cuffs and hem.
Twin needle stitching. Cut out label.

Weight: 240 gsm

Size:	S	M	L	XL	XXL
Chest (to fit):	35/37	38/40	41/43	44/46	47/49



JH019 AWDIs Distressed Hoodie

Jet black 80% ringspun cotton/20% polyester french terry.
Heather grey 70% ringspun cotton/27% polyester/3% viscose.
Soft cotton faced fabric. Distressed finish. Drop shoulder style.
Double fabric hood with round lace drawcord. Front pouch pocket.
Hidden ear phone loops. Ribbed cuffs and hem. Tear out label.

Weight: 280 gsm

Size:	S	M	L	XL	XXL
Chest (to fit):	36	40	44	48	52



EA040 Ecologie Unisex Lusaka Regen Hoodie

70% regenerated cotton/30% recycled polyester.
French terry. Drop shoulder style. Fashion fit. Hood with no drawcord.
Taped neck. Front pouch pocket. Ribbed angled cuffs and hem.
Unbranded size label at neckline.
Regenerated cotton is made from 100% pre-consumer waste.

Weight: 260 gsm

Size:	XS	S	M	L	XL	XXL
Chest (to fit):	32	36	40	44	48	52



CV3742 Bella+Canvas Unisex Raw Seam Hoodie

52% airlume combed ringspun cotton/48% polyester.
Brushed back fleece. Drop shoulder style. Retail fit.
Unlined hood with self colour drawcord.
Front pouch pocket. Ribbed cuffs and hem.
Raw seam finish throughout. Tear out label.

Weight: 230 gsm

Size:	XS	S	M	L	XL	XXL
Chest (to fit):	31/34	34/37	38/41	42/45	46/49	50/53



JH019
Just Hoods
AWDis



CV3742
Bella+Canvas



Just Hoods®

DEEP BLACK


TEAR
OUT
Label

FOR EASY REBRANDING • FOR EASY REBRANDING •

JH001F

Ladies
College
Hoodie
XS-XXL
P264

JH001

College
Hoodie
XS-5XL
P247
Available in Kids size

JH030
Sweatshirt
XS-5XL
P213

JH035
Ladies
Cropped
Sweatshirt
XXS-XL
P225

NEW COLOUR
FOR 2021

JH050
Zoodie
S-5XL
P272
Available in Kids size

NEW COLOUR
FOR 2021

JH072
College
Cuffed
Jog Pants
S-XXL
P237

NEW ORGANIC PRODUCT
FOR 2021

JH201
Organic
Hoodie
XS-3XL
P255

NEW ORGANIC PRODUCT
FOR 2021

JH230
Organic
Sweatshirt
XS-XXL
P222

AWDis

{ PETA - APPROVED
VEGAN }



EA041

écologie.
byAWDis

EA041 Ecologie Corcovado Organic Hoodie

100% organic cotton.*
Soft peached fabric with brushed inner.
Drop shoulder style. Fashion fit.
Hood with no drawcord. Taped neck. Front pouch pocket.
Ribbed angled cuffs and hem. Unbranded size label.



VEGAN

No Label

Weight: 270 gsm

Size:	XS	S	M	L	XL	XXL
Chest (to fit):	32	36	40	44	48	52

*Heather grey 90% organic cotton/10% viscose.

03568 SOL'S Unisex Stellar Organic Hoodie

80% OCS certified organic cotton/20% recycled polyester.
Cotton faced fabric. Brushed back fleece.
Raglan sleeves. Lined hood with self colour round drawcord. Metal eyelets and drawcord tips. Taped neck. Half moon back yoke. Front pouch pocket. 2x2 cotton/elastane ribbed cuffs and hem. Unbranded size label at neckline.



ORGANIC BLEND
CLOUTIER STANDARD

No Label

Weight: 280 gsm

Size:	XS	S	M	L	XL	XXL	3XL
Chest (to fit):	35/36	36/38	38/40	41/42	43/44	45/47	47/49



03568

SOL'S
the fair spirit

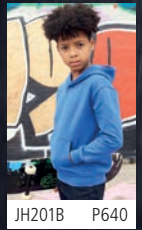
NEW

STANDARD WEIGHT ORGANIC HOODIES 255



JH201

JustHoods
AWDis



JH201B P640



NEW

JH201 AWDIs Organic Hoodie

80% organic cotton/20% recycled polyester.*
Soft cotton faced fabric.
Brushed back fleece.
Drop shoulder style.
Double fabric hood with self colour drawcord.
Front pouch pocket.
Ribbed cuffs and hem.
Twin needle stitching.
Tear out label.



Weight: 280 gsm

Size:	XS	S	M	L	XL	XXL	3XL
Chest (to fit):	34	36	40	44	48	52	56

*Heather grey 75% organic cotton/25% recycled polyester.

Sedex

VEGAN

WRAP

Tear Out

HOODS

256 MARL, MELANGE & WASHED

JH008

JustHoods®
 AWDIs

**JH008 AWDIs
Heather Hoodie**

52% cotton/48% polyester.
Brushed back fleece. Soft feel lightweight fabric. Slim fit.
Double fabric hood with white flat drawcord. Front pouch pocket.
Ribbed cuffs and hem. Twin needle stitching. Tear out label.

Weight: 225 gsm

Size:	S	M	L	XL	XXL
Chest (to fit):	36	40	44	48	52



AN APPROVED VEGAN

Sedex®

Tear Out

JH090

JustHoods®
 AWDIs

**JH090 AWDIs
Washed Hoodie**

55% ringspun cotton/45% polyester.
Soft cotton faced fabric. Brushed back fleece.
Washed effect. Drop shoulder style. Double fabric hood with drawcord. Front pouch pocket. Ribbed cuffs and hem. Twin needle stitching. Due to washing process each garment is unique.

Weight: 280 gsm

Size:	XS	S	M	L	XL	XXL	3XL
Chest (to fit):	34	36	40	44	48	52	56



AN APPROVED VEGAN

Sedex®

Tear Out

**NX9300 Next Level
Unisex PCH Pullover Hoodie**

60% cotton/40% polyester. Brushed back fleece. Drop shoulder style. Two panel hood with self colour drawcord and metal eyelets. Taped neck. Two front pockets. 1x1 ribbed cuffs. Straight open hem. Twin needle stitching. Tear out label.

Weight: 250 gsm

Size:	XS	S	M	L
Chest (to fit):	33/35	35/38	38/41	43/44
Size:	XL	XXL	3XL	
Chest (to fit):	45/48	48/52	53.5/56	



Tear Out

heather military green

heather grey

heather maroon

heather cardinal

**JH012 AWDIs
Cosmic Blend Hoodie**

70% ringspun cotton/30% polyester.
Soft cotton faced, marl effect fabric. Brushed back fleece.
Double fabric hood with flat lace drawcord. Front pouch pocket. Ribbed cuffs and hem. Twin needle stitching. Tear out label.

Weight: 280 gsm

Size:	XS	S	M	L	XL	XXL
Chest (to fit):	34	36	40	44	48	52



AN APPROVED VEGAN

Sedex®

Tear Out

NX9300

**NL | NEXT LEVEL
APPAREL.**


JH012

JustHoods®
 AWDIs


CV3329
BELLA+CANVAS



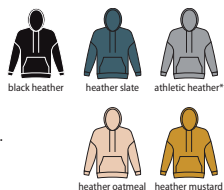
CV3329 Bella+Canvas
Unisex Sueded Hoodie

52% airlume combed ringspun cotton/48% polyester.*
Brushed back fleece. Drop shoulder style. Retail fit.
Unlined hood with self colour drawcord.
Front pouch pocket. Ribbed cuffs and hem. Tear out label.

Weight: 230 gsm

Size:	XS	S	M	L	XL	XXL
Chest (to fit):	31/34	34/37	38/41	42/45	46/49	50/53

*Athletic heather 90% airlume combed ringspun cotton/10% polyester.



JH017 AWDIs
Surf Hoodie

80% ringspun cotton/20% polyester.
Soft cotton faced, marl effect fabric. Drop shoulder style.
Double fabric hood with flat lace drawcord.
Front pouch pocket. Ribbed cuffs and hem. Tear out label.

Weight: 280 gsm

Size:	XS	S	M	L	XL	XXL	3XL
Chest (to fit):	34	36	40	44	48	52	56



FRONT ROW & CO
HERITAGE CLOTHING

FR832 Front Row
French Terry Hoodie

Navy marl 60% cotton/40% polyester.
Charcoal marl 65% polyester/35% cotton.
French terry. Raglan sleeves. Slim fit.
Two panel hood with slim contrast drawcord.
Herringbone taped neck. Fashion V insert.
Front pouch pocket. Ribbed elasticated cuffs and hem. Coverstitch detail on seams. Tag free.

Weight: 280 gsm

Size:	XS	S	M
Chest (to fit):	34/36	36/38	38/40
Size:	L	XL	XXL
Chest (to fit):	42	44/46	48



FR832



261M Russell
Authentic Melange Hoodie

75% combed ringspun cotton/21% polyester/4% viscose.* Brushed back fleece. 100% cotton outer layer. Drop shoulder style. Straight modern cut. Double layer hood with flat chunky drawcord. Herringbone taped neck. Locker patch. Offset shoulder seams. Front pouch pocket. Headphone access. Elastane ribbed cuffs and hem. Coverseamed armholes, cuffs and hem. Unbranded size label.

Weight: 280 gsm

Size:	XS	S	M	L
Chest (to fit):	34/36	36/38	38/40	40/42
Size:	XL	XXL	3XL	
Chest (to fit):	42/44	44/46	46/48	

*Carbon melange 77% cotton/23% polyester.



261M



261F Online

JH017
JustHoods®
AWDis



T5502 Tee Jays
Vintage Lightweight Hooded Sweatshirt

60% cotton/40% polyester.
Brushed back fleece. Raglan sleeves.
Shaped fit. Two panel lined hood with contrast flat lace drawcord. Front pouch pocket.
Ribbed cuffs and hem with elastane.

Weight: 260 gsm

Size:	XS	S	M	L
Chest (to fit):	35/36	36/38	38/40	41/42
Size:	XL	XXL	3XL	
Chest (to fit):	43/44	45/47	47/49	



T5502



SOL'S®

the fair spirit

NEW

03568 SOL'S Unisex
Stellar Organic Hoodie
P255



**80% organic cotton &
20% recycled polyester**



Sustainable
Apparel Coalition

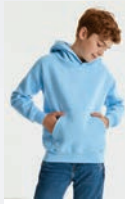
**FAIR
WEAR**



JH101

JustHoods®
AWDis

575M

R
russell

575B P641

**575M Russell
Hooded Sweatshirt**

50% ringspun combed cotton/50% polyester.*
Drop shoulder style. Double thickness hood with
topstitch detail. Flat chunky lace drawcord with
buttonhole eyelets. Taped neck. Slim sleeves with
wider cuffs. Front pouch pocket with bartacks.
Tubular body.

Weight: 295 gsm

Size:	XS	S	M
Chest (to fit):	34/36	36/38	38/40
Size:	L	XL	XXL
Chest (to fit):	40/42	42/44	44/46

*Light oxford 53% polyester/47% cotton.

**13251 SOL'S
Unisex Slam Hooded Sweatshirt**

50% cotton/50% polyester.
Brushed back fleece.
Drop shoulder style.
Self colour flat drawcord.
Front pouch pocket.
Elastane ribbed cuffs and hem.

Weight: 320 gsm

Size:	XS	S	M
Chest (to fit):	35/36	36/38	38/40
Size:	L	XL	XXL
Chest (to fit):	41/42	43/44	45/47



13251

SOL'S®
the fair spirit

13255 P642

**JH101 AWDIs
Graduate Heavyweight Hoodie**

70% ringspun cotton/30% polyester.*
Soft cotton faced fabric.
Brushed back fleece.
Drop shoulder style.
Three panel, single jersey lined hood with flat lace drawcord.
Front pouch pocket with flatlock stitching detail.
Ribbed cuffs and hem.
Twin needle stitching.
Tear out label.

Weight: 330 gsm

Size:	XS	S	M	L	XL	XXL	3XL
Chest (to fit):	34	36	40	44	48	52	56

*Charcoal 55% polyester/45% cotton.

**Heather grey 65% cotton/35% polyester.



Sedex®

{ AW APPROVED }
VEGANTear
Out

260 HEAVYWEIGHT HOODIES

JH020

JustHoods®
AWDis


JH020 AWDi Street Hoodie

70% ringspun cotton/30% polyester.*
 Soft cotton faced fabric. Brushed back fleece. Drop shoulder style. Three panel double fabric hood with self colour flat lace drawcord. V neck insert detail. Locker patch. Hanging loop at back of neck. Front pouch pocket with hidden media pocket and small opening for ear phone cord feed. Hidden ear phone loops. Ribbed cuffs and hem. Thumbholes on cuffs. Twin needle stitching. Tear out label.

Weight: 330 gsm

Size:	S	M	L	XL	XXL
Chest (to fit):	36	40	44	48	52

*Charcoal 52% cotton/48% polyester.

**Heather grey 65% cotton/35% polyester.



GD54 [12500]

GILDAN®
DryBlend®


GD54 Gildan DryBlend® Hooded Sweatshirt

50% cotton/50% polyester. Pre-shrunk. Air jet yarn, softer feel and reduced pilling. Moisture wicking properties. Double fabric hood with self colour drawcord. Front pouch pocket. Ribbed trim with spandex at cuffs and hem. Twin needle stitching. Tear out label (some colours in transition).

Weight: White 297 gsm, Cols 305 gsm

Size:	S	M	L	XL	XXL
Chest (to fit):	34/36	38/40	42/44	46/48	50/52



T5430 Tee Jays Hooded Sweatshirt

70% ringspun cotton/30% polyester.*
 Brushed back fleece. Drop shoulder style. Two panel lined hood with self colour drawcord. Branded metal eyelets. Front pouch pocket. Ribbed cuffs and hem with elastane. 60°C wash.

Weight: 310 gsm

Size:	S	M	L	XL	XXL	3XL
Chest (to fit):	36/38	38/40	41/42	43/44	45/47	47/49

*Heather grey 80% cotton/20% polyester.



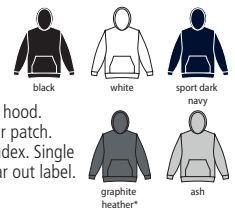
GH062 Gildan Hammer Hooded Sweatshirt

80% combed ringspun cotton/20% polyester.*
 Soft cotton faced fabric. Classic fit. Drop shoulder style with rolled forward shoulder seams. Three panel unlined hood. Crossover neck detail with ribbed edge. Half moon locker patch. Front pouch pocket. 1x1 ribbed cuffs and hem with spandex. Single needle topstitched side seams. Twin needle stitching. Tear out label.

Weight: 305 gsm

Size:	S	M	L	XL	XXL	3XL
Chest (to fit):	34/36	38/40	42/44	46/48	50/52	54/56

*Graphite heather 60% cotton/40% polyester.



T5430

TEE JAYS®


T5431 P265



GH062 [HF500]

GILDAN®
HAMMER




JH021

JustHoods
AWDis

JH021 AWDIs
Cross Neck Hoodie

70% ring spun cotton/30% polyester.*
Soft cotton faced fabric. Brushed back fleece.
Drop shoulder style. Three panel double fabric hood with flat lace drawcord. Crossover neck detail. Front pouch pocket. Ribbed cuffs and hem. Thumbholes on cuffs. Twin needle stitching. Tear out label.

Weight: 330 gsm

Size:	S	M	L	XL	XXL
Chest (to fit):	36	40	44	48	52

*Charcoal 52% cotton/48% polyester.
**Heather grey and black smoke 65% cotton/35% polyester.



JH100 AWDIs
Chunky Hoodie

80% ring spun cotton/20% polyester.*
Soft cotton faced fabric. Brushed back fleece.
Drop shoulder style. Double fabric hood with heather grey waffle fabric inner. Chunky white flat lace drawcord. Two front pockets. Deep ribbed cuffs and hem. Overlock stitching detail. Tear out label.

Weight: 400 gsm

Size:	XS	S	M	L	XL	XXL
Chest (to fit):	34	36	40	44	48	52

*Charcoal 52% cotton/48% polyester.
**Heather grey 75% cotton/25% polyester.



JH100

JustHoods
AWDis

★**SUPERSTAR**
by mantis

M73 Superstar by Mantis
Hoodie

80% cotton/20% polyester. In transition to using organic cotton. Soft peached fabric with brushed inner. Raglan sleeves. Waffle lined hood with flat natural drawcord. Taped neck. Front pouch pocket with flatlock stitching. Deep ribbed cuffs and hem. Tear out label.

Weight: 330 gsm

Size:	S	M	L	XL	XXL
Chest (to fit):	36/38	39/41	42/44	45/47	48/49



M73

M74 P265

KARIBAN
Vintage

KV2308 Kariban Vintage
Hooded Sweatshirt

80% cotton/20% polyester.* Soft peached finish. Brushed back fleece. Drop shoulder style. Two panel lined hood with round natural drawcord. Metal eyelets and drawcord tips. Double herringbone twill taped neck. Front pouch pocket with ribbed opening. Ribbed cuffs and hem. Specifically treated to appear aged. Due to the dyeing process each garment is unique. Unbranded size label at neckline.

Weight: 350 gsm

Size:	S	M	L	XL	XXL
Chest (to fit):	34/36	38	40	42	44/46

*Ash heather grey 79% cotton/20% polyester/1% viscose.



KV2308



CN231 Canterbury
Club Hoodie

55% cotton/45% polyester.
Drop shoulder style.
Jersey lined hood with self colour drawcord.
Forward facing shoulder seams.
Front pouch pocket.
Ribbed cuffs and hem.
Branding on lower right sleeve.

Weight: 300 gsm

Size:	XS	S	M	L
Chest (to fit):	34/36	37/39	39/41	41/43
Size:	XL	XXL	3XL	
Chest (to fit):	43/45	46/48	49/51	



CN231



CN231B P642



GH062**Gildan Hammer
Hooded Sweatshirt**

305 gsm

S-3XL

5 colours

P260

DECORATOR-FRIENDLY SWEATSHIRTS FROM GILDAN®

The Gildan Hammer™ Sweatshirt collection offers a Sweatshirt (GH060), a Hooded Sweatshirt (GH062) and a Full Zip Sweat Jacket (GH064) options, crafted from a super-soft 80% combed ring spun cotton /20% polyester blend, with a decorator-friendly 100% cotton face. This collection is available in sizes S-3XL in five colours, except the jacket, which comes in two colours.



RING SPUN SOFT



TEAR AWAY LABEL

FB1904

ORIGINAL
FNB



FB1904 Original FNB Unisex Organic Hoodie

80% certified organic combed cotton/20% recycled polyester.* Pre-shrunk.

Drop shoulder style. Two panel lined hood with self colour drawcord.

Metal eyelets and drawcord tips. Ready to dye has polyester stitched drawcord tips in gunmetal colour. Taped neck. Front pouch pocket. Ribbed cuffs and hem. Tear out label.

Weight: 320 gsm

Size:	XS	S	M	L
Chest (to fit):	35/36	37/38	39/40	41/42
Size:	XL	XXL	3XL	
Chest (to fit):	43/44	45/47	48/50	

*Ready To Dye 100% cotton.



Tear Out

KB482 Kariban Organic Hoodie

80% OCS certified organic cotton/20% polyester.

Brushed back fleece. Drop shoulder style. Double fabric hood with ribbed edge. Self colour drawcord. Taped neck. Stitched V detail at front neck. Ear phone access on neck and front pocket. Two front pockets with piping. Deep ribbed cuffs and hem. Unbranded size label at neckline.

Weight: 300 gsm

Size:	S	M	L	XL	XXL
Chest (to fit):	34/36	38	40	42	44/46



No Label

KB482

KARIBAN



KB483 Online

AM01

ANTHEM



AM03 P265



NEW

AM01 Anthem Organic Hoodie

80% organic cotton/20% recycled polyester.*

Soft cotton faced fabric.

Brushed back fleece.

Drop shoulder style.

Double fabric hood with self colour drawcord.

Metal eyelets and drawcord tips.

Front pouch pocket.

Ribbed cuffs and hem.

Twin needle stitching.

Tear out label.



Weight: 320 gsm

Size:	S	M	L	XL	XXL	3XL
Chest (to fit):	36	40	44	48	52	56

*Grey marl 73% organic cotton/21% recycled polyester/6% viscose.

**Ash 78% organic cotton/21% recycled polyester/1% viscose.



AN APPROVED
VEGAN



Tear Out

JH001F

JustHoods®
AWDis



JH001 P247



JH001B P640



JH001F AWDIs Ladies College Hoodie

80% ringspun cotton/20% polyester.*
Soft cotton faced fabric.
Brushed back fleece. Drop shoulder style.
Ladies fit. Double fabric hood with self
colour drawcord. Front pouch pocket
with ribbed edge. Ribbed cuffs and hem.
Twin needle stitching. Tear out label.

Weight: 280 gsm

Size:	XS	S	M	L	XL	XXL
Ladies size:	8	10	12	14	16	18

*Charcoal 52% cotton/48% polyester.

**Heather grey 75% cotton/25% polyester.

AN APPROVED
VEGAN

Sedex®

Tear Out



SS801 [620380]



SS14 P249



SS14B P641



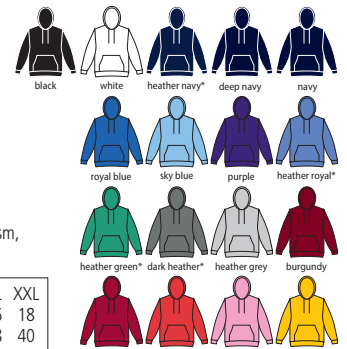
SS801 Fruit of the Loom Classic Lady Fit Hooded Sweatshirt

80% cotton/20% polyester.*
Drop shoulder style. Ladies fit. Double
fabric hood with self colour drawcord.
Front pouch pocket. Shaped side seams.
Cotton/Lycra® ribbed cuffs and hem.
Twin needle stitching. Cut out label.

Weight: White and Heather Grey 260 gsm,
Cols 280 gsm

Size:	XS	S	M	L	XL	XXL
Ladies size:	8	10	12	14	16	18
Chest (to fit):	30	32	34	36	38	40

*Dark heather, heather royal, heather green, heather
navy and heather red 60% cotton/40% polyester.



Cut Out



265F Russell Ladies Authentic Hooded Sweatshirt

80% combed ringspun cotton/20% polyester.
Cotton faced fabric. Brushed back fleece. Drop
shoulder style. Ladies fit. Double fabric hood with
topstitch detail. Flat lace drawcord with buttonhole
eyelets. Taped neck. Front pouch pocket with
bartacks. Ear phone access. 1x1 ribbed cuffs and hem.
Coverseamed around hood, shoulders, armholes, cuffs and hem.

Weight: 280 gsm

Size:	XS	S	M	L	XL
Ladies size:	8	10	12	14	16
Chest (to fit):	30/32	32/34	34/36	36/38	38/40



265F



265M P250



265B P640



CV3719
BELLA+CANVAS

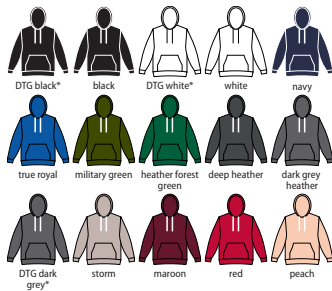
CV3719 Bella+Canvas
Unisex Pullover Hoodie

52% airlume combed ringspun cotton/48% polyester.*
 Soft feel fabric.
 Drop shoulder style.
 Retail fit.
 Unlined hood with white drawcord.
 Front pouch pocket.
 Ribbed cuffs and hem.
 Tear out label.

Weight: DTG 270 gsm, Cols 220 gsm

Size:	XS	S	M
Chest (to fit):	31/34	34/37	38/41
Size:	L	XL	XXL
Chest (to fit):	42/45	46/49	50/53

*DTG 70% airlume combed ringspun cotton/30% polyester.


AM03
ANTHEM


AM01 P263

NEW

AM03 Anthem
Ladies Organic Hoodie

80% organic cotton/20% recycled polyester.*
 Soft cotton faced fabric. Brushed back fleece.
 Drop shoulder style. Double fabric hood with self colour drawcord. Metal eyelets and drawcord tips. Front pouch pocket. Ribbed cuffs and hem. Twin needle stitching.
 Tear out label.

Weight: 320 gsm

Size:	XS	S	M	L	XL	XXL
Ladies size:	8	10	12	14	16	18

*Grey marl 73% organic cotton/21% recycled polyester/6% viscose.



AN APPROVED
VEGAN

Sedex



Tear Out

SS181 Fruit of the Loom
Lady Fit Lightweight Hooded
Sweatshirt

80% cotton/20% polyester.
 Raglan sleeves. Ladies fit.
 Hood with self colour flat drawcord.
 Front pouch pocket. Shaped side seams.
 Cotton/Lycra® ribbed cuffs and hem.
 Twin needle stitching.
 Cut out label.

Weight: 240 gsm

Size:	XS	S	M	L	XL	XXL
Ladies size:	8	10	12	14	16	18
Chest (to fit):	30	32	34	36	38	40


SS181 [621480]


SS121 P253



SS121B P642

T5431 Tee Jays
Ladies Raglan Hooded Sweatshirt

70% ringspun cotton/30% polyester.*
 Brushed back fleece. Raglan sleeves. Two panel lined hood.
 Self colour drawcord with metal tips. Branded eyelets.
 Front pouch pocket. Deep ribbed cuffs and hem with elastane. 60°C wash.

Weight: 310 gsm

Size:	S	M	L	XL	XXL
Ladies size:	8/10	10/12	12/14	14/16	16/18

*Heather grey 80% cotton/20% polyester.



Sedex

T5431

TEE JAYS



T5430 P260

266 LADIES CROPPED HOODIES

JH016

JustHoods®
AWDis



JH016 AWDIs Ladies Cropped Hoodie

80% ringspun cotton/20% polyester.*
Soft cotton faced fabric. Brushed back fleece.
Drop shoulder style. Ladies fit. Double fabric hood with self colour flat lace drawcord.
Front pouch pocket. Cropped length. Ribbed cuffs. Overlock stitching on hem. Tear out label.



Weight: 280 gsm

Size:	XXS	XS	S	M	L	XL
Ladies size:	6	8	10	12	14	16

*Heather grey 75% cotton/25% polyester.



SK516



SK516 SF Ladies Cropped Slounge Hoodie

Black 80% cotton/20% polyester.
Heather grey 70% cotton/30% polyester. Brushed back fleece.
Drop shoulder style. Two panel hood with self colour drawcord.
Taped neck. Cropped raw edge hem. Ribbed cuffs. Tear out label.



Weight: 280 gsm

Size:	XS	S	M	L	XL
Ladies size:	8	10	12	14	16
Chest (to fit):	30/32	32/34	34/36	36/38	38/40



Tear Out

BL7502 Bella+Canvas Ladies Cropped Hoodie

52% ringspun combed cotton/48% polyester.
Brushed back fleece. Drop shoulder style.
Unlined hood. Self colour drawcord. Cropped length.
Ribbed cuffs. Unfinished raw hem. Tear out label.



Weight: 220 gsm

Size:	S	M	L	XL
Ladies size:	6/8	10/12	14/16	18/20
Chest (to fit):	30/32	32/34	34/36	36/38



M140 Mantis Ladies Cropped Hoodie

80% OCS certified organic cotton/20% recycled PET french terry.*
Drop shoulder style. Loose fit. Three panel unlined hood with extra long drawcord.
Cropped length. Deep ribbed cuffs with thumbholes. Twin needle hem. Tear out label.



Weight: 300 gsm

Size:	XS	S	M	L	XL
Ladies size:	8	8/10	12	14	16/18
Chest (to fit):	30/32	32/34	35/37	38/40	41/43

*Heather marl 71% organic cotton/21% recycled polyester/8% viscose.



BL7502

BELLA+CANVAS.



M140

mantis



JH015

JustHoods®
 AWDiS

**JH015 AWDiS
 Ladies Hoodie Dress**

Black 80% ringspun cotton/20% polyester.
 Heather grey 75% ringspun cotton/25% polyester.
 Soft cotton faced fabric.
 Brushed back fleece.
 Drop shoulder style. Relaxed ladies fit.
 Double fabric hood with self colour flat lace drawcord. Taped neck. Front pouch pocket.
 Long length. Ribbed cuffs and hem.
 Twin needle stitching. Tear out label.

Weight: 280 gsm

Size:	XS	S	M	L	XL	XXL
Ladies size:	8	10	12	14	16	18



jet black



heather grey

AN APPROVED
VEGAN

Tear Out

JustHoods®
NEW STYLE

 IDEAL FOR BRANDING
 Great for
 SCREEN PRINT
 IDEAL FOR BRANDING

DUSTY GREEN

M142

mantis
**M142 Mantis
 Ladies Hoodie Dress**

80% OCS certified organic cotton/20% recycled PET french terry.
 Drop shoulder style.
 Loose fit. Lightweight.
 Three panel unlined hood with extra long drawcord. Long length.
 Deep ribbed cuffs with thumbholes.
 Side vents. Twin needle hem. Tear out label.

Weight: 150 gsm

Size:	S	M	L	XL
Ladies size:	8/10	12	14	16/18
Chest (to fit):	32/34	35/37	38/40	41/43



black

AN APPROVED
VEGAN

Tear Out

JH005

JustHoods®
 AWDiS

**JH005 AWDiS
 Ladies Longline Hoodie**

80% ringspun cotton/20% polyester.*
 Soft cotton faced fabric. Brushed back fleece.
 Drop shoulder style. Ladies fit. Three panel double fabric hood with self colour flat lace drawcord.
 Front pouch pocket. Long length. Long ribbed cuffs and deep ribbed hem. Twin needle stitching.
 Tear out label.

Weight: 280 gsm

Size:	XS	S	M	L	XL
Ladies size:	8	10	12	14	16

*Heather grey 75% cotton/25% polyester.



jet black



new french navy



sapphire blue

AN APPROVED
VEGAN

purple



heather grey*



Tear Out

JH065 Ladies Cropped Zoodie / XXS-XL
 P284

AWDiS

 PETA - APPROVED
VEGAN

JH003

JustHoods®
AWDis



JH003B P643



JH003 AWDIs

Varsity Hoodie

80% ringspun cotton/20% polyester.*
Soft cotton faced fabric.
Brushed back fleece.
Drop shoulder style.
Double fabric hood with contrast inner.
Contrast flat lace drawcord.
Front pouch pocket.
Ribbed cuffs and hem.
Twin needle stitching.
Tear out label.

Weight: 280 gsm

Size:	XS [▲]	S	M	L	XL	XXL	3XL [■]	4XL [°]	5XL [°]
Chest (to fit):	34	36	40	44	48	52	56	60	62

*Heather grey 75% cotton/25% polyester.

**Charcoal 52% cotton/48% polyester.

▲Available in XS.

■Available in 3XL.

°Available in 3XL, 4XL and 5XL.



Sedex





FR841

FRONT ROW & CO
HERITAGE CLOTHING

FR841 Front Row Unisex Striped Cuff Hoodie

70% cotton/30% polyester.
Brushed back fleece. Two panel hood.
Drawcord with metal eyelets. Herringbone taped neck.
Front pouch pocket. 1x1 elasticated ribbed cuffs and
hem with contrast stripe detail. Tag free.

Weight: 280 gsm



Size:	XS	S	M
Chest (to fit):	34/36	36/38	38/40
Size:	L	XL	XXL
Chest (to fit):	42	44/46	48



JH103

JustHoods®
AWDis

JH103 AWDIs Game Day Hoodie

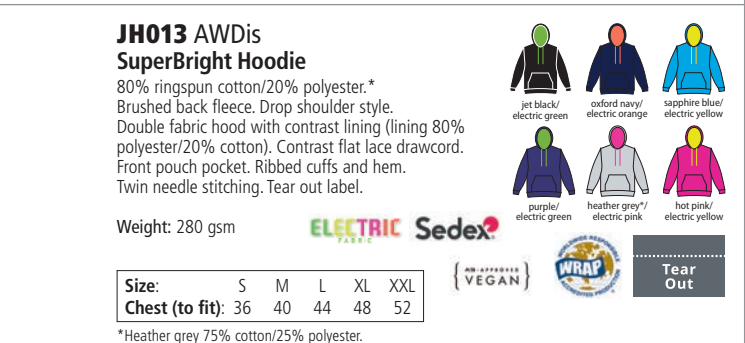
70% ringspun cotton/30% polyester.*
Soft cotton faced fabric. Brushed back fleece.
Drop shoulder style. Regular fit.
Double fabric jersey lined hood with drawcord.
Stripe detail on sleeves. Front pouch pocket.
1x1 ribbed cuffs and hem. Twin needle stitching. Tear out label.

Weight: 330 gsm



Size:	XS	S	M	L	XL	XXL	3XL
Chest (to fit):	32	36	40	44	48	52	56

*Heather grey 65% cotton/35% polyester.



JH013

JustHoods®
AWDis

JH013 AWDIs SuperBright Hoodie

80% ringspun cotton/20% polyester.*
Brushed back fleece. Drop shoulder style.
Double fabric hood with contrast lining (lining 80%
polyester/20% cotton). Contrast flat lace drawcord.
Front pouch pocket. Ribbed cuffs and hem.
Twin needle stitching. Tear out label.

Weight: 280 gsm



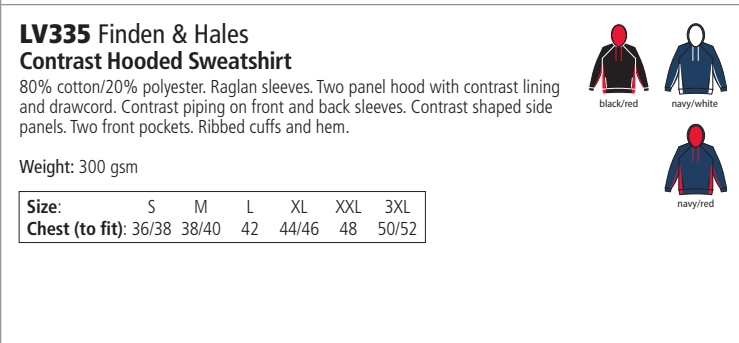
ELECTRIC Sedex®
FABRIC

AN APPROVED
VEGAN



Size:	S	M	L	XL	XXL
Chest (to fit):	36	40	44	48	52

*Heather grey 75% cotton/25% polyester.



LV335

FINDEN & HALES

LV335 Finden & Hales Contrast Hooded Sweatshirt

80% cotton/20% polyester. Raglan sleeves. Two panel hood with contrast lining
and drawcord. Contrast piping on front and back sleeves. Contrast shaped side
panels. Two front pockets. Ribbed cuffs and hem.

Weight: 300 gsm



Size:	S	M	L	XL	XXL	3XL
Chest (to fit):	36/38	38/40	42	44/46	48	50/52



LV339 P644

270 CONTRAST HOODIES

JH014

JustHoods®
AWDis



JH014B P643



JH014 AWDIs Camo Hoodie

70% ringspun cotton/30% polyester.
Soft cotton faced fabric. Brushed back fleece.
Drop shoulder style. Double fabric hood with flat lace drawcord.
Front pouch pocket. Ribbed cuffs and hem. Twin needle stitching.
Tear out label.

Weight: 280 gsm

Size:	XS	S	M	L	XL	XXL
Chest (to fit):	34	36	40	44	48	52



Tear Out

WRAP

Sedex

JH018 AWDIs Nautical Striped Hoodie

Heather grey stripe 90% cotton/10% viscose.
Navy stripe 80% cotton/20% polyester.
Soft cotton faced fabric. Drop shoulder style.
Relaxed fit. Double fabric hood with round lace drawcord.
Taped neck. Front pouch pocket. Ribbed cuffs and hem. Tear out label.

Weight: 280 gsm

Size:	XS	S	M	L	XL	XXL
Chest (to fit):	34	36	40	44	48	52



WRAP

Tear Out

02998

SOL'S®
the fair spirit

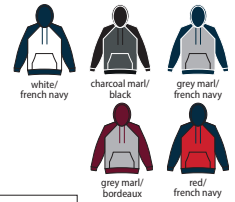


02998 SOL'S Unisex Seattle Contrast Raglan Hoodie

80% ringspun cotton/20% polyester.
Brushed back fleece. Raglan sleeves. Two panel lined
hood with drawcord. Taped neck. Front pouch pocket.
Ribbed cuffs and hem. Unbranded size label.

Weight: 280 gsm

Size:	XS	S	M	L	XL	XXL	3XL
Chest (to fit):	35/36	36/38	38/40	41/42	43/44	45/47	47/49



No Label

269M Russell Authentic Baseball Hoodie

75% combed ringspun cotton/21% polyester/4%
viscose.* Brushed back fleece. 100% cotton outer layer.
Straight modern cut. Contrast raglan sleeves. Contrast double
layer hood with flat chunky drawcord. Herringbone taped neck. Locker patch. Elastane
ribbed cuffs and hem. Coverseamed armholes, cuffs and hem. Unbranded size label.

Weight: 280 gsm

Size:	XS	S	M	L
Chest (to fit):	34/36	36/38	38/40	40/42
Size:	XL	XXL	3XL	
Chest (to fit):	42/44	44/46	46/48	

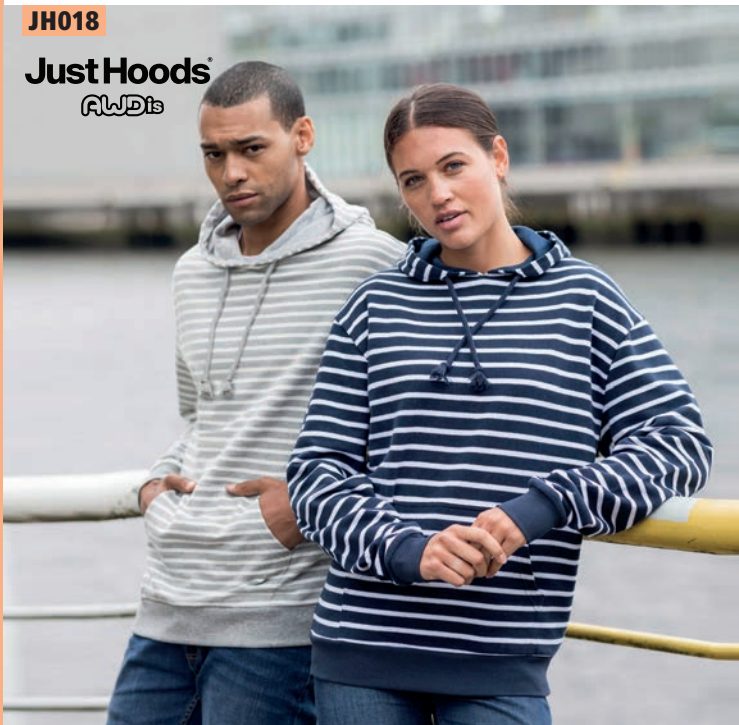


No Label

*Carbon melange 77% cotton/23% polyester.

JH018

JustHoods®
AWDis



269M

R
russell



JH009

Just Hoods®
AWDis

JH009B P643

**JH009 AWDIs
Baseball Hoodie**

80% ringspun cotton/20% polyester.*
Soft cotton faced fabric. Brushed back fleece.
Contrast raglan sleeves. Contrast double
fabric hood with flat lace drawcord.
Front pouch pocket. Ribbed cuffs and hem.
Twin needle stitching. Tear out label.

Weight: 280 gsm

Size:	S	M	L	XL	XXL
Chest (to fit):	36	40	44	48	52

*Charcoal 52% cotton/48% polyester.

**Heather grey 75% cotton/25% polyester.

▲Camo colours 70% cotton/30% polyester.

WRAP
Sedex®Tear
Out**T5432 Tee Jays
Two Tone Raglan Hooded Sweatshirt**

Body 80% ringspun combed cotton/20% polyester.
Sleeves 70% ringspun combed cotton/30% polyester.
Brushed back fleece. Contrast raglan sleeves. Two panel lined hood.
Self colour drawcord with metal tips. Branded eyelets.
Front pouch pocket. Contrast ribbed cuffs and hem with elastane.

Weight: 310 gsm

Size:	S	M	L	XL	XXL	3XL
Chest (to fit):	36/38	38/40	41/42	43/44	45/47	47/49



T5432

TEE JAYS®

SF470



SM470 P646

**SF470 SF
Unisex All In One**

80% cotton/20% polyester.*
Brushed back fleece.
Slim fit.
Two panel hood with single jersey lining.
Taped back neck.
YKK zip front opening with chin guard.
1x1 ribbed elasticated cuffs.
Front pouch pockets with flatlock stitching.
Cuffed leg ends. Tear out label.



Weight: 280 gsm

Size:	XXS/XS	S/M	L/XL
Chest (to fit):	32/36	36/40	42/46

*Heather grey 71% cotton/23% polyester/6% viscose.

Tear
Out

JH050

JustHoods®
AWDis



JH055 P284



JH050B P645



JH050 AWDIs Zoodie

80% ringspun cotton/20% polyester.*
Soft cotton faced fabric.
Brushed back fleece.
Drop shoulder style.
Double fabric hood with self colour drawcord.
Full length covered plastic zip.
Front pouch pockets. Ribbed cuffs and hem.
Twin needle stitching. Tear out label.

Weight: 280 gsm

Size:	S	M	L	XL
Chest (to fit):	36	40	44	48
Size:	XXL	3XL	4XL	5XL
Chest (to fit):	52	56	60	62

*Charcoal 52% cotton/48% polyester.
**Heather grey 75% cotton/25% polyester.
▲Available in 3XL, 4XL and 5XL.



Tear Out

SS16 [620620]



SS82 P284



SS16B P645



SS16 Fruit of the Loom Classic Zip Hooded Sweatshirt

80% cotton/20% polyester.*
Drop shoulder style. Double fabric hood with flat drawcord. Taped neck. Narrow full length covered zip. Front pouch pockets. Cotton/Lycra® ribbed cuffs and hem. Twin needle stitching. Cut out label.



Weight: White and Heather Grey 260 gsm, Cols 280 gsm

Size:	S	M	L	XL
Chest (to fit):	35/37	38/40	41/43	44/46
Size:	XXL	3XL	4XL	5XL
Chest (to fit):	47/49	50/52	53/55	56/58

*Dark heather 60% cotton/40% polyester.

**Available in 3XL.

▲Available in 3XL, 4XL and 5XL.



K303 Kustom Kit Classic Zip Hooded Sweatshirt

65% polyester/35% cotton.
Brushed back jersey. Drop shoulder style.
Double fabric hood with flat lace drawcord. Taped neck and shoulders. Full length covered metal zip. Front pouch pockets with flatlock stitching. Self fabric cuffs and hem.
Tear out label. Superwash® 60°C.



Weight: 280 gsm

Size:	XS	S	M	L
Chest (to fit):	32/34	36/38	40	42
Size:	XL	XXL	3XL	
Chest (to fit):	44	46/48	50/52	



K303

KUSTOM KIT



JH250

JustHoods
AWDis


NEW

HOODS

GD58 [18600]

GILDAN®
Heavy Blend™


GD58B P645

GD58 Gildan Heavy Blend™ Zip Hooded Sweatshirt

50% cotton/50% polyester.
Pre-shrunk. Air jet yarn, softer feel and reduced
pilling. Drop shoulder style. Hood with self
colour drawcord. Full length covered metal zip.
Front pouch pockets. Ribbed trim with spandex
at cuffs and hem. Twin needle stitching.
Tear out label (some colours in transition).

Weight: White 257 gsm, Cols 271 gsm

Size:	S	M	L	XL
Chest (to fit):	34/36	38/40	42/44	46/48
Size:	XXL	3XL*	4XL*	5XL*
Chest (to fit):	50/52	54/56	58/60	62/64

*Available in 3XL, 4XL and 5XL.



266M Russell Authentic Zip Hooded Sweatshirt

80% combed ringspun cotton/20% polyester.
Cotton faced fabric. Brushed back fleece. Drop shoulder
style. Double fabric hood with topstitch detail. Flat lace
drawcord with buttonhole eyelets. Taped neck. Full length
covered YKK zip. Front pouch pockets. Ear phone access.
1x1 ribbed cuffs and hem. Coverseamed around hood,
shoulders, armholes, cuffs and hem.

Weight: 280 gsm

Size:	XS	S	M	L
Chest (to fit):	34/36	36/38	38/40	40/42
Size:	XL	XXL	3XL	4XL*
Chest (to fit):	42/44	44/46	46/48	48/50

*Available in 4XL.



266M



266F P284



266B P645

JH250 AWDIs Organic Zoodie

80% organic cotton/20% recycled polyester.*
Soft cotton faced fabric.
Brushed back fleece.
Drop shoulder style.
Double fabric hood with self colour drawcord.
Full length metal zip.
Front pouch pockets.
Ribbed cuffs and hem.
Twin needle stitching.
Tear out label.

Weight: 280 gsm

Size:	XS	S	M	L	XL	XXL
Chest (to fit):	34	36	40	44	48	52

*Heather grey 75% organic cotton/25% recycled polyester.



KUSTOM KIT®

K333

REGULAR FIT
HOODIE

P249



SSE16 [620340]



SS82 P284

SSE16 Fruit of the Loom Premium Zip Hooded Sweatshirt

70% cotton/30% polyester. Drop shoulder style. Double fabric hood with drawcord. Taped neck. Covered zip. Two front pouch pockets. Cotton/elastane ribbed cuffs and hem. Twin needle stitching.

Weight: Heather Grey 260 gsm, Cols 280 gsm

Size:	S	M	L	XL	XXL
Chest (to fit):	35/37	38/40	41/43	44/46	47/49



47800

SOL'S
the fair spirit


47900 Online

47800 SOL'S Seven Zip Hooded Sweatshirt

50% cotton/50% polyester. Brushed back fleece. Drop shoulder style. Jersey lined hood with flat drawcord. Taped neck. Full length covered zip. Front pouch pockets. Ribbed cuffs and hem.

Weight: 280 gsm

Size:	S	M	L	XL	XXL	3XL
Chest (to fit):	36/38	38/40	41/42	43/44	45/47	47/49



47700 SOL'S Unisex Silver Hooded Jacket

50% cotton/50% polyester. Brushed fleece backing. Drop shoulder style. Lined hood with white drawcord. Full length zip with white trim. Front pouch pockets. Ribbed cuffs and hem.

Weight: 280 gsm

Size:	XS	S	M	L	XL	XXL
Chest (to fit):	35/36	36/38	38/40	41/42	43/44	45/47



03105 SOL'S Spike Full Zip Hooded Sweatshirt

80% cotton/20% polyester. Cotton faced fabric. Brushed back fleece. Drop shoulder style. Lined hood with self colour drawcord. Taped neck. Locker patch. Full length zip. Front pouch pockets. Ribbed cuffs and hem. Unbranded size label at neckline.

Weight: 280 gsm

Size:	S	M	L	XL	XXL	3XL
Chest (to fit):	36/38	38/40	41/42	43/44	45/47	47/49



No Label

47700

SOL'S
the fair spirit


03105

SOL'S
the fair spirit


NX9602

NL | **NEXT LEVEL**
APPAREL



NX9602 Next Level Unisex Fleece Zip Hoodie

80% cotton/20% polyester.
Brushed back fleece.
Drop shoulder style.
Two panel jersey lined hood with flat natural drawcord.
Taped neck.
Locker patch.
Full length metal YKK zip.
Front pouch pockets.
1x1 ribbed cuffs and hem.
Tear out label.

Weight: 250 gsm



Size:	XS	S	M	L	XL	XXL	3XL
Chest (to fit):	33/35	35/38	38/41	43/44	45/48	48/52	53.5/56



Tear Out

JH057

JustHoods®
AWDis



JH057 AWDIs Sleeveless Zoodie

80% ringspun cotton/20% polyester.*
Soft cotton faced fabric. Brushed back fleece.
Double fabric hood with white drawcord.
Hanging loop at back neck.
Full length YKK metal zip. Ribbed bound armholes.
Front pouch pockets. Ribbed hem. Twin needle stitching. Tear out label.

Weight: 280 gsm

Size:	S	M	L	XL	XXL
Chest (to fit):	36	40	44	48	52

*Charcoal 52% cotton/48% polyester.

**Heather grey 75% cotton/25% polyester.



Sedex

AN APPROVED
VEGAN



Tear Out

01714 SOL'S Stone Zip Hooded Sweatshirt

50% cotton/50% polyester.
Brushed back fleece. Drop shoulder style.
Hood with self fabric drawcord. Full length zip.
Front pouch pockets. Ribbed cuffs and hem.

Weight: 260 gsm

Size:	XS	S	M	L	XL	XXL	3XL
Chest (to fit):	35/36	36/38	38/40	41/42	43/44	45/47	47/49



01714

SOL'S®
the fair spirit



CV3739

BELLA+CANVAS

SF526



SM526 P644

SF526 SF Unisex Slim Fit Zip Hooded Sweatshirt

60% cotton/40% polyester.*

Brushed back fleece. Raglan sleeves.

Two panel jersey lined hood with flat lace drawcord. Taped neck. Full length metal zip.

Two front pockets. Deep stretch ribbed cuffs and hem. Tear out label.



Weight: 250 gsm

Size:	XXS	XS	S	M	L	XL	XXL
Chest (to fit):	32/34	34/36	36/38	38/40	42	44/46	48

*Heather grey 75% cotton/20% polyester/5% viscose.

Sedex

Tear Out

SS122 Fruit of the Loom Lightweight Zip Hooded Sweatshirt

80% cotton/20% polyester.

Raglan sleeves. Hood with self colour flat drawcord. Full length covered zip. Front pouch pockets. Cotton/Lycra® ribbed cuffs and hem. Twin needle stitching. Cut out label.



Weight: 240 gsm

Size:	S	M	L	XL	XXL
Chest (to fit):	35/37	38/40	41/43	44/46	47/49



SS122 [621440]



SS182 Online

CV3739 Bella+Canvas Unisex Full Zip Hoodie

52% airlume combed ringspun cotton/48% polyester.*

Soft feel fabric.

Drop shoulder style.

Retail fit.

White drawcord.

Full length metal YKK zip with white trim.

Front pouch pockets.

Ribbed cuffs and hem.

Tear out label.

Weight: DTG 270 gsm, Cols 220 gsm

Size:	XS	S	M	L	XL	XXL
Chest (to fit):	31/34	34/37	38/41	42/45	46/49	50/53

*DTG colours 70% airlume combed ringspun cotton/30% polyester.



Tear Out

Just Hoods®

NEW & ORGANIC



JH250 Organic Zoodie / XS-XXL
P273

80% organic cotton / 20% recycled polyester

AWDis

{ PETA - APPROVED
VEGAN }

CV3909

BELLA+CANVAS.



CV3909 Bella+Canvas
Unisex Tri-Blend Full Zip Hoodie

50% polyester/37.5% airlume combed ringspun cotton/12.5% rayon.
Soft feel fabric. Drop shoulder style. Retail fit.
Full length YKK zip with cream trim. Cream drawcord.
Front pouch pockets. Ribbed cuffs and hem.

Weight: 280 gsm

Size:	XS	S	M	L	XL	XXL
Chest (to fit):	31/34	34/37	38/41	42/45	46/49	50/53



263M Russell
Authentic Melange Zip Hoodie

75% combed ringspun cotton/21% polyester/4% viscose.* Brushed back fleece. 100% cotton outer layer.
Drop shoulder style. Straight modern cut. Double layer hood with flat chunky drawcord. Herringbone taped neck.
Locker patch. Offset shoulder seams. Covered metal YKK zip. Front pouch pockets. Headphone access.
Elastane ribbed cuffs and hem. Coverseamed armholes, cuffs and hem. Unbranded size label.

Weight: 280 gsm

Size:	XS	S	M	L	XL	XXL	3XL
Chest (to fit):	34/36	36/38	38/40	40/42	42/44	44/46	46/48

*Carbon melange 77% cotton/23% polyester.



X
No Label

263M



263F Online



JH058
JustHoods
AWDis



JH058 AWDIs
Unisex Heather Zoodie

52% ringspun cotton/48% polyester.
Soft feel lightweight fabric. Brushed back fleece.
Drop shoulder style. Slim fit. Double fabric hood with white
drawcord. Full length metal zip. Front pouch pockets.
Ribbed cuffs and hem. Twin needle stitching. Tear out label.

Weight: 225 gsm

Size:	XS	S	M	L	XL	XXL
Chest (to fit):	34	36	40	44	48	52



CV3339
BELLA+CANVAS



NEW

CV3339 Bella+Canvas
Unisex Sueded Full Zip Hoodie

52% airlume combed ringspun cotton/48% polyester.*
Brushed back fleece. Drop shoulder style. Retail fit.
Unlined hood with self colour drawcord. Full length metal zip.
Two front pockets. Ribbed cuffs and hem. Tear out label.

Weight: 230 gsm

Size:	XS	S	M	L	XL	XXL
Chest (to fit):	31/34	34/37	38/41	42/45	46/49	50/53

*Athletic heather 90% airlume combed ringspun cotton/10% polyester.



JH068 AWDIs
Space Blend Zoodie

60% cotton/40% polyester.
Marl effect fabric. Brushed back fleece. Modern fit.
Double fabric hood with flat drawcord. Full length plastic zip.
Front pouch pockets. Ribbed cuffs and hem. Tear out label.

Weight: 300 gsm

Size:	XS	S	M	L	XL	XXL
Chest (to fit):	34	36	40	44	48	52



KV2306 Kariban Vintage
Zip Hooded Sweatshirt

80% cotton/20% polyester.*
Brushed back fleece. Soft peached finish. Drop shoulder style.
Two panel lined hood with round natural drawcord. Metal
eyelets and drawcord tips. Double herringbone twill taped neck.
Full length metal zip. Front pouch pockets. Ribbed cuffs and hem.
Specifically treated to appear aged. Due to the dyeing process
each garment is unique. Unbranded size label at neckline.

Weight: 350 gsm

Size:	S	M	L	XL	XXL
Chest (to fit):	34/36	38	40	42	44/46

*Ash heather grey 79% cotton/20% polyester/1% viscose.



JH068
JustHoods
AWDis



KV2306

KARIBAN
Vintage



280 HEAVYWEIGHT ZIP HOODIES

JH150

JustHoods®
AWDis**JH150 AWDIs**
Graduate Heavyweight Zoodie

70% ringspun cotton/30% polyester.*
Soft cotton faced fabric. Brushed back fleece. Drop shoulder style.
Three panel, single jersey lined hood with flat lace drawcord.
Full length plastic zip with chin guard. Front pouch pockets with flatlock stitching. Ribbed cuffs and hem. Tear out label.

Weight: 330 gsm



Size:	XS	S	M	L	XL	XXL	3XL
Chest (to fit):	34	36	40	44	48	52	56

*Charcoal 55% polyester/45% cotton.

**Heather grey 65% cotton/35% polyester.

WRAP
VEGAN

Sedex



Tear Out

M83 Superstar by Mantis
Full Zip Hoodie

80% cotton/20% polyester.
In transition to using organic cotton.
Soft peached fabric with brushed inner. Drop shoulder style.
Lined hood with flat natural drawcord and brass effect tipping.
Taped neck. Full length brass effect YKK zip.
Front pouch pockets with flatlock stitching.
Deep ribbed cuffs and hem. Tear out label.

Weight: 330 gsm



Size:	S	M	L	XL	XXL*
Chest (to fit):	36/38	39/41	42/44	45/47	48/49

*Not available in XXL.

WRAP
VEGAN

Tear Out

M83

★SUPERSTAR
by mantis

M84 P285



T5435

TEE JAYS



T5436 P285

**T5435 Tee Jays**
Fashion Zip Hooded Sweatshirt

70% ringspun cotton/30% polyester.*
Brushed back fleece. Raglan sleeves. Fitted style.
Two panel lined hood. Contrast striped drawcord with branded eyelets. Full length metal zip. Front pouch pockets. Ribbed cuffs and hem with elastane.

Weight: 310 gsm



Size:	S	M	L	XL	XXL
Chest (to fit):	36/38	38/40	41/42	43/44	45/47

*Heather grey 80% cotton/20% polyester.

Sedex

T5402 Tee Jays
Urban Zip Hoodie

100% ringspun combed cotton.*
Enzyme washed. Unbrushed. Raglan sleeves.
Loose fashion fit. Two panel lined hood. Contrast flat lace drawcord with branded metal eyelets. Full length contrast zip. Front pouch pockets. 2x2 ribbed cuffs and hem with elastane.

Weight: 320 gsm



Size:	S	M	L	XL	XXL	3XL
Chest (to fit):	36/38	38/40	41/42	43/44	45/47	47/49

*Heather grey 80% cotton/20% polyester.

Sedex

T5402

TEE JAYS



AM02

ANTHEM™



AM04 P285

NEW

AM02 Anthem Organic Full Zip Hoodie

80% organic cotton/20% recycled polyester.* Soft cotton faced fabric. Brushed back fleece. Drop shoulder style. Double fabric hood with self colour drawcord. Metal eyelets and drawcord tips. Full length metal zip. Front pouch pockets. Ribbed cuffs and hem. Twin needle stitching. Tear out label.

Weight: 320 gsm

Size:	S	M	L	XL	XXL	3XL
Chest (to fit):	36	40	44	48	52	56

*Grey marl 73% organic cotton/21% recycled polyester/6% viscose.



JH052 AWDi's Chunky Zoodie

80% ringspun cotton/20% polyester.* Soft cotton faced fabric. Brushed back fleece. Drop shoulder style. Double fabric hood with heather grey waffle lining. Chunky white flat lace drawcord. Full length brass zip covered by chunky ribbed detail. Side panels for fashion fit. Front pouch pockets. Deep ribbed cuffs and hem. Overlock stitching detail. Tear out label.

Weight: 400 gsm

Size:	S	M	L	XL	XXL
Chest (to fit):	36	40	44	48	52

*Charcoal 52% cotton/48% polyester.

**Heather grey 75% cotton/25% polyester.



KARIBAN

KB484 Kariban Organic Zip Hoodie

80% OCS certified organic cotton/20% polyester french terry. Brushed back fleece. Drop shoulder style. Double fabric hood with ribbed edge and self colour drawcord. Taped neck. Full length metal zip. Ear phone access on neck and front pocket. Two front pockets. Deep ribbed cuffs and hem. Unbranded size label at neckline.

Weight: 300 gsm

Size:	S	M	L	XL	XXL
Chest (to fit):	34/36	38	40	42	44/46



KB484



KB485 Online


SOL'S®
the fair spirit

10584 SOL'S Unisex Sherpa Hooded Jacket

80% cotton/20% polyester. 100% polyester cream sherpa lined body and hood. Drop shoulder style. Cream drawcord. Full length covered zip. Front pouch pockets. Deep ribbed cuffs and hem.

Weight: 280 gsm

Size:	XXS	XS	S	M
Chest (to fit):	32/34	35/36	36/38	38/40
Size:	L	XL	XXL	
Chest (to fit):	41/42	43/44	45/47	



10584


KARIBAN
Vintage

KV2312 Kariban Vintage Sherpa Lined Hooded Sweatshirt

80% cotton/20% polyester. 100% polyester sherpa lined. Drop shoulder style. Three panel sherpa lined hood with round natural drawcord. Metal eyelets and drawcord tips. 4x4 ribbed hood edge, inner collar, cuffs and hem. Full length metal zip. Two front pockets. Specifically treated to appear aged. Due to the dyeing process each garment is unique. Unbranded size label at neckline. Zip access for decoration on left chest and side seam.

Weight: 350 gsm

Size:	S	M	L	XL	XXL
Chest (to fit):	34/36	38	40	42	44/46



KV2312



JH052

JustHoods
AWDi's


282 CONTRAST ZIP HOODIES

JH053

JustHoods®
AWDis



JH053B P644



JH053 AWDIs Varsity Zoodie

80% ringspun cotton/20% polyester.*
Soft cotton faced fabric.
Brushed back fleece.
Double fabric hood with contrast inner.
Contrast flat lace drawcord.
Full length contrast plastic zip.
Front pouch pockets.
Ribbed cuffs and hem.
Twin needle stitching.
Tear out label.

Weight: 280 gsm

Size:	S	M	L	XL	XXL
Chest (to fit):	36	40	44	48	52

*Charcoal 52% cotton/48% polyester.

**Heather grey 75% cotton/25% polyester.



Tear Out

Sedex®

{ AN APPROVED VEGAN }

EA051

écologie.
by AWDIs



EA051 Ecologie Unisex Okavango Regen Zoodie

70% regenerated cotton/30% recycled polyester.
Peach finish. Brushed back fleece. Drop shoulder style.
Hood with contrast drawcord. Taped neck.
Full length metal zip. Front pouch pockets. Contrast ribbed cuffs and hem. Unbranded size label at neckline. Regenerated cotton is made from 100% pre-consumer waste.



Weight: 330 gsm

Size:	XS	S	M	L	XL	XXL
Chest (to fit):	32	36	40	44	48	52

Sedex®

{ AN APPROVED VEGAN }

X
No Label

JH059 AWDIs Retro Contrast Zoodie

Body 52% ringspun cotton/48% polyester.
Sleeves 80% ringspun cotton/20% polyester.
Soft cotton faced fabric. Brushed back fleece. Slim fit.
Contrast double fabric hood with flat white drawcord. Full length metal YKK zip. Contrast sleeves. Front pouch pockets. Ribbed cuffs and hem. Twin needle stitching. Tear out label.



Weight: 280 gsm

Size:	XS	S	M	L	XL	XXL
Chest (to fit):	34	36	40	44	48	52

Sedex®

{ AN APPROVED VEGAN }



Tear Out

JH059

JustHoods®
AWDis



JH051

JustHoods®
AWDis



JH051B P644



JH051 AWDIs
Urban Varsity Zoodie

70% ringspun cotton/30% polyester.*
Soft cotton faced fabric. Brushed back fleece. Drop shoulder style. Three panel hood with contrast single jersey fabric inner. Chunky flat lace cream drawcord. Full length metal YKK zip with chin guard. Contrast sleeves. Front pouch pockets. Ribbed cuffs and hem with stripe detail. Tear out label.



Weight: 330 gsm

Size:	S	M	L	XL	XXL
Chest (to fit):	36	40	44	48	52

*Charcoal 52% cotton/48% polyester.
**Heather grey 65% cotton/35% polyester.



JH066

JustHoods®
AWDis



JH066 AWDIs
Contrast Sports Polyester Zoodie

100% polyester.
Brushed back fleece. Raglan sleeves. Three panel hood with contrast lining and drawcord. Full length contrast plastic zip. Contrast stripe on shoulders and sleeves. Front pouch pockets. Twin needle stitching. Tear out label.



Weight: 200 gsm

Size:	S	M	L	XL	XXL	3XL
Chest (to fit):	36	40	44	48	52	56



LV330 Finden & Hales
Contrast Zip Hooded Sweatshirt

80% cotton/20% polyester.
Contrast lined hood and drawcord. Full length zip. Contrast panels on shoulders, sleeves and sides. Front pouch pockets. Ribbed cuffs and hem.



Weight: 300 gsm

Size:	S	M	L	XL	XXL	3XL
Chest (to fit):	36/38	38/40	42	44/46	48	50/52

JH063 AWDIs
Baseball Zoodie

80% ringspun cotton/20% polyester.*
Soft cotton faced fabric. Brushed back fleece. Raglan sleeves. Contrast double fabric hood with flat lace drawcord. Full length contrast plastic YKK zip. Contrast sleeves. Front pouch pockets. Ribbed cuffs and hem. Twin needle stitching. Tear out label.



Weight: 280 gsm

Size:	S	M	L	XL	XXL
Chest (to fit):	36	40	44	48	52

*Charcoal 52% cotton/48% polyester.
**Heather grey 75% cotton/25% polyester.



LV330
FINDEN+HALES



JH063

JustHoods®
AWDis



284 LADIES ZIP HOODIES

JH055

JustHoods®
AWDis



JH050 P272



JH050B P645



JH055 AWDIs Ladies Zoodie

80% ringspun cotton/20% polyester.*
Soft cotton faced fabric. Brushed back fleece. Drop shoulder style.
Ladies fit. Double fabric hood with self colour drawcord.
Taped neck. Full length covered plastic zip.
Front pouch pockets. Deep hem. Ribbed cuffs and hem.
Twin needle stitching. Tear out label.

Weight: 280 gsm

Size:	XS	S	M	L	XL
Ladies size:	8	10	12	14	16

*Heather grey 75% cotton/25% polyester.



JH065

JustHoods®
AWDis



NEW

JH065 AWDIs

Ladies Cropped Zoodie

80% ringspun cotton/20% polyester.*
Soft cotton faced fabric. Brushed back fleece.
Drop shoulder style. Girlie relaxed fit. Double fabric hood with flat lace drawcord. Full length metal YKK zip. Cropped length.
Ribbed cuffs. Raw edge hem with cover stitching.
Twin needle stitching. Tear out label.

Weight: 280 gsm

Size:	XXS	XS	S	M	L	XL
Ladies size:	6	8	10	12	14	16

*Heather grey 75% cotton/25% polyester.



266F Russell

Ladies Authentic Zip Hooded Sweatshirt

80% combed ringspun cotton/20% polyester.
Cotton faced fabric. Brushed back fleece. Drop shoulder style.
Ladies fit. Double fabric hood with topstitch detail. Flat lace drawcord with buttonhole eyelets. Taped neck. Full length covered YKK zip.
Front pouch pockets. Ear phone access. 1x1 ribbed cuffs and hem.
Coverseamed around hood, shoulders, armholes, cuffs and hem.

Weight: 280 gsm

Size:	XS	S	M	L	XL
Ladies size:	8	10	12	14	16
Chest (to fit):	30/32	32/34	34/36	36/38	38/40



SS82 Fruit of the Loom

Premium Lady Fit Zip Hooded Jacket

70% cotton/30% polyester.
Drop shoulder style. Ladies fit. Double fabric hood with self colour flat drawcord. Narrow full length covered zip. Front pouch pockets. Cotton/elastane ribbed cuffs and hem. Cut out label.

Weight: White and Heather Grey 260 gsm, Cols 280 gsm

Size:	XS	S	M	L	XL	XXL
Ladies size:	8	10	12	14	16	18
Chest (to fit):	30	32	34	36	38	40



266F



266M P273



266B P645



SS82 [621180]



SS16 P272



SS16B P645





AM04

ANTHEM™



AM02 P281



AM04 Anthem Ladies Organic Full Zip Hoodie

80% organic cotton/20% recycled polyester.* Soft cotton faced fabric. Brushed back fleece. Drop shoulder style. Double fabric hood with self colour drawcord. Metal eyelets and drawcord tips. Full length metal YKK zip with white trim. Front pouch pockets. Ribbed cuffs and hem. Twin needle stitching. Tear out label.

Weight: 320 gsm

Size:	XS	S	M	L	XL	XXL
Ladies size:	8	10	12	14	16	18

*Grey marl 73% organic cotton/21% recycled polyester/6% viscose.



CV3739 Bella+Canvas Unisex Full Zip Hoodie

52% airlume combed ringspun cotton/48% polyester.* Soft feel fabric. Drop shoulder style. Retail fit. White drawcord. Full length metal YKK zip with white trim. Front pouch pockets. Ribbed cuffs and hem. Tear out label.

Weight: DTG 270 gsm, Cols 220 gsm

Size:	XS	S	M
Chest (to fit):	31/34	34/37	38/41
Size:	L	XL	XXL
Chest (to fit):	42/45	46/49	50/53

*DTG colours 70% airlume combed ringspun cotton/30% polyester.



T5436 Tee Jays Ladies Fashion Zip Hooded Sweatshirt

70% ringspun cotton/30% polyester.* Brushed back fleece. Raglan sleeves. Fitted style. Two panel lined hood. Contrast striped drawcord with branded eyelets. Full length metal zip. Front pouch pockets. Ribbed cuffs and hem with elastane.

Weight: 310 gsm

Size:	S	M	L	XL	XXL
Ladies size:	8/10	10/12	12/14	14/16	16/18

*Heather grey 80% cotton/20% polyester.



T5436



T5435 P280

★SUPERSTAR by mantis



M84 Superstar by Mantis Ladies Full Zip Hoodie

80% OCS certified organic cotton/20% polyester. Soft peached fabric with brushed inner. Drop shoulder style. Lined hood with flat natural drawcord and brass effect tips. Taped neck. Full length brass effect YKK zip. Shaped side seams. Front pouch pockets with flatlock stitching. Deep ribbed cuffs and hem. Tear out label.

Weight: 330 gsm

Size:	S	M	L	XL
Ladies size:	8/10	12	14	16/18
Chest (to fit):	32/34	35/37	38/40	41/43



M84

M83 P280



NX9603 Next Level Ladies PCH Zip Hoodie

60% cotton/40% polyester. Brushed back fleece. Raglan sleeves. Two panel jersey lined hood with flat natural drawcord. Full length metal YKK zip. Front pouch pockets. Ribbed cuffs and hem. Tear out label.

Weight: 250 gsm

Size:	XS	S	M	L	XL	XXL
Chest (to fit):	30	32	34	36	39	42



NX9603



CV3739

BELLA+CANVAS

V necks	337 - 339
Wool blend v necks	339
Crew necks	340 - 341
Fashion knitwear	341 - 342
Zip sweaters	342 - 343
Cardigans	343
Sleeveless sweaters	344
Ladies v necks	345
Ladies crew neck	347
Ladies sweaters & cardigans	347 - 349

MODERN STYLE
MODERN THINKING

H729

HENBURY

H729

ZIP NECK SWEATER

Sizes: XS-4XL P342

50/50 Cotton/Acrylic Henbury Knitwear Collection



RX220

PRO RTX

RX220 PRO RTX
Pro Acrylic Security V Neck Sweater

100% acrylic.
 5 gauge. Elbow patches 65% polyester/35% cotton.
 Modern unisex styling. Ribbed knit neck. Tear release epaulettes on shoulders.
 Left sleeve pen pocket. Ideal for security applications.



Size:	S	M	L	XL	XXL	3XL	4XL	5XL
Chest (to fit):	36	40	44	48	52	56	60	62

Sedex



RX200

PRO RTX

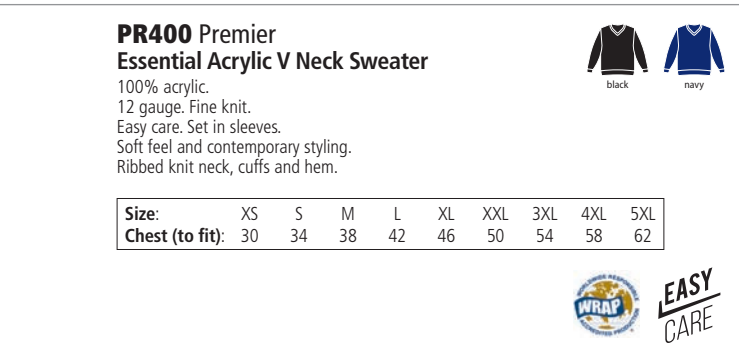
RX200 PRO RTX
Pro Acrylic V Neck Sweater

100% acrylic.
 10 gauge. Modern unisex styling.
 Set in sleeves. Fashioned V neck.
 Saddle shoulders. Ribbed knit neck, cuffs and hem.



Size:	S	M	L	XL	XXL	3XL	4XL	5XL
Chest (to fit):	36	40	44	48	52	56	60	62

WRAP Sedex

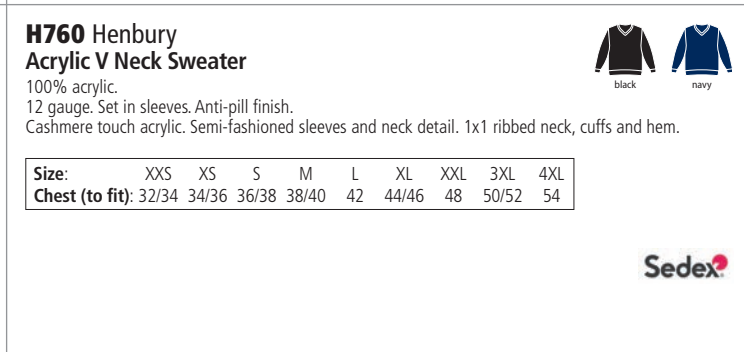

PR400 Premier
Essential Acrylic V Neck Sweater

100% acrylic.
 12 gauge. Fine knit.
 Easy care. Set in sleeves.
 Soft feel and contemporary styling.
 Ribbed knit neck, cuffs and hem.



Size:	XS	S	M	L	XL	XXL	3XL	4XL	5XL
Chest (to fit):	30	34	38	42	46	50	54	58	62

WRAP EASY CARE


H760 Henbury
Acrylic V Neck Sweater

100% acrylic.
 12 gauge. Set in sleeves. Anti-pill finish.
 Cashmere touch acrylic. Semi-fashioned sleeves and neck detail. 1x1 ribbed neck, cuffs and hem.



Size:	XXS	XS	S	M	L	XL	XXL	3XL	4XL
Chest (to fit):	32/34	34/36	36/38	38/40	42	44/46	48	50/52	54

Sedex



PR400

PREMIER



H760

HENBURY



H761 P345

338 V NECKS

H720

HENBURY



H721 P345

H720 Henbury
Lightweight Cotton Acrylic
V Neck Sweater

50% cotton/50% acrylic.
 12 gauge. Set in sleeves.
 Semi-fashioned sleeve and neck detail.
 1x1 ribbed neck, cuffs and hem.



Sedex®

Size:	XXS	XS	S	M	L
Chest (to fit):	32/34	34/36	36/38	38/40	42
Size:	XL	XXL	3XL	4XL	
Chest (to fit):	44/46	48	50/52	54	

710M Russell Collection
Cotton Acrylic V Neck Sweater

50% cotton/50% acrylic CottonBlend™.
 12 gauge. Set in sleeves.
 1x1 ribbed trim with elastane at cuffs and hem.
 Machine washable at 40°C.



Size:	XXS	XS	S	M	L	XL	XXL	3XL	4XL
Chest (to fit):	32/34	34/36	36/38	38/40	40/42	42/44	44/46	46/48	48/50

710M

R RUSSELL SINCE 1902
 russell COLLECTION


710F P345

PR694

PREMIER®


PR696 P345

PR694 Premier
Knitted Cotton Acrylic
V Neck Sweater

55% cotton/45% acrylic.
 12 gauge. Easy care. Fine knit. Set in sleeves.
 Soft feel and contemporary styling.
 Machine washable at 40°C.



Size:	XXS	XS	S	M	L	XL	XXL	3XL	4XL
Chest (to fit):	28	30	34	38	42	46	50	54	58

EASY
CARE
KB965 Kariban
Cotton Acrylic V Neck Sweater

50% cotton/50% acrylic.
 Fitted style. Set in sleeves.
 Taped neck. Double layer neck rib.



Weight: 290 gsm

Size:	S	M	L	XL	XXL	3XL
Chest (to fit):	34/36	38	40	42	44/46	48/50

KB965

KARIBAN



KB966 Online



90000

SOL'S
the fair spirit


90010 Online

90000 SOL'S
Galaxy Cotton Acrylic V Neck Sweater

49% cotton/49% acrylic/2% polyamide.
12 gauge.
Set in sleeves.
Ribbed cuffs and hem.



Size:	S	M	L	XL	XXL	3XL
Chest (to fit):	36/38	38/40	41/42	43/44	45/47	47/49

K352 Kustom Kit
Arundel Cotton Acrylic V Neck Sweater

50% cotton/50% acrylic.
12 gauge.
Set in sleeves.
Tubular linked mitred V neck.
1x1 ribbed cuffs and hem.



Size:	XXS	XS	S	M	L	XL	XXL	3XL
Chest (to fit):	28/30	32/34	36/38	40	42	44	46/48	50/52

Sedex
HENBURY
H730 Henbury
Lambswool V Neck Sweater

100% lambswool.
Woolmark® approved lambswool.
7 gauge.
Set in sleeves.
Semi-fashioned sleeve and neck detail.
1x1 ribbed neck, cuffs and hem.
Machine washable.

Size:	S	M	L	XL	XXL
Chest (to fit):	36/38	38/40	42	44/46	48


Sedex

H730


TEE JAYS
T6001 Tee Jays
Merino Blend V Neck Sweater

50% merino wool/50% acrylic.
14 gauge.
Tailored fit.
Set in sleeves.
Fully fashioned.
Ribbed V neck, cuffs and hem.
Machine washable at 30°C.

Size:	S	M	L
Chest (to fit):	36/38	38/40	41/42
Size:	XL	XXL	3XL
Chest (to fit):	43/44	45/47	47/49



T6001


GLENMUIR
1891
GM10 Glenmuir
V Neck Lambswool Sweater

100% lambswool.
15 gauge.
Set in sleeves.
Breathable.
Ribbed knit neck, cuffs and hem.
Shrink resistant.
Machine washable.
Branding on right sleeve.

Size:	S	M	L
Chest (to fit):	36/38	39/41	42/44
Size:	XL	XXL	
Chest (to fit):	45/48	49/52	


GM10 [MKL5900VN-LOM]

K352
KUSTOM KIT


K353 P345



340 CREW NECKS

H725

HENBURY



H728 P347



H725 Henbury
Lightweight Cotton Acrylic Crew Neck Sweater
 50% cotton/50% acrylic.
 12 gauge. Set in sleeves. Semi-fashioned sleeve and neck detail.
 1x1 ribbed cuffs and hem.

Size:	S	M	L	XL	XXL	3XL	4XL
Chest (to fit):	36/38	38/40	42	44/46	48	50/52	54



Sedex

717M

RUSSELL SINCE 1902
COLLECTION



717F Online



717M Russell Collection
Cotton Acrylic Crew Neck Sweater

50% cotton/50% acrylic CottonBlend™.
 12 gauge. Easy care.
 Classic fit. Fully fashioned set in sleeves.
 Elastane ribbed cuffs and hem.
 Machine washable at 40°C.



Size:	XXS	XS	S	M	L	XL	XXL	3XL	4XL
Chest (to fit):	32/34	34/36	36/38	38/40	40/42	42/44	44/46	46/48	48/50

K253 Kustom Kit
Arundel Crew Neck Sweater

50% cotton/50% acrylic.
 12 gauge. Set in sleeves.
 Regular fit. Fashioned armholes and neck.
 1x1 ribbed collar, cuffs and hem.
 Machine washable at 40°C.



Size:	XS	S	M	L	XL	XXL	3XL
Chest (to fit):	32/34	36/38	40	42	44	46/48	50/52

Sedex

PR692 Premier
Cotton Rich Crew Neck Sweater

55% cotton/45% acrylic.
 12 gauge. Fine knit.
 Easy care. Contemporary stylish fit.
 Ribbed collar, cuffs and hem.
 Machine washable.



Size:	XXS	XS	S	M	L	XL	XXL	3XL	4XL
Chest (to fit):	28	30	34	38	42	46	50	54	58

EASY CARE

K253

KUSTOM KIT



PR692

PREMIER





T6000

TEE JAYS

**T6000 Tee Jays
Merino Blend Crew
Neck Sweater**

50% merino wool/50% acrylic.
14 gauge. Tailored fit. Set in sleeves.
Fully fashioned. Ribbed collar, cuffs and hem.
Machine washable at 30°C.



Size:	S	M	L	XL	XXL	3XL
Chest (to fit):	36/38	38/40	41/42	43/44	45/47	47/49



EA060

écologie.
byAWDis

**EA060 Ecologie
Unisex Arenal Regen Crew Neck Sweater**

70% regenerated cotton/30% recycled polyester.
12 gauge. Fashion fit. Set in sleeves.
Rolled collar, cuffs and hem.
Unbranded size label at neckline.
Regenerated cotton is made from 100% pre-consumer waste.



Size:	XS	S	M	L	XL	XXL
Chest (to fit):	32	36	40	44	48	52



**H735 Henbury
Lambswool Crew Neck Sweater**

100% lambswool.
Woolmark® approved lambswool. 7 gauge.
Set in sleeves. Semi-fashioned armholes and neck.
1x1 ribbed neck, cuffs and hem.
Machine washable.



Size:	S	M	L	XL	XXL
Chest (to fit):	36/38	38/40	42	44/46	48

**EA062 Ecologie
Unisex Taroko Regen Crew Neck Sweater**

70% regenerated cotton/30% recycled polyester.
7 gauge. Seed stitch. Fashion fit. Set in sleeves.
Ribbed collar, cuffs and hem.
Unbranded size label.
Regenerated cotton is made from 100% pre-consumer waste.



Size:	XS	S	M	L	XL	XXL
Chest (to fit):	32	36	40	44	48	52



H735

HENBURY



EA062

écologie.
byAWDis

EA080

écologie.
by AWDiS



EA080 Ecologie Unisex Iguazu Regen Knitted Hoodie

70% regenerated cotton/30% recycled polyester.
7 gauge. Chunky tuck stitch knit. Set in sleeves. Two tone marl effect.
Fashion fit. Hood with drawcord. Ribbed cuffs and hem.
Unbranded size label at neckline.
Regenerated cotton is made from 100% pre-consumer waste.



Size:	XS	S	M	L	XL	XXL
Chest (to fit):	32	36	40	44	48	52

Sedex



AW APPROVER
VEGAN

H729

HENBURY

CUT-OUT LABEL



H729 Henbury Zip Neck Sweater

50% cotton/50% acrylic.
12 gauge. Fine knit. Semi-fashioned sleeve and neck detail.
Metal zip and pull. 1x1 ribbed collar, cuffs and hem. Cut out label.



Size:	XS	S	M	L	XL	XXL	3XL	4XL
Chest (to fit):	34/36	36/38	38/40	42	44/46	48	50/52	54



Sedex

EA061 Ecologie Unisex Wakhan Zip Neck Regen Sweater

70% regenerated cotton/30% recycled polyester.
7 gauge. Fashion fit. Set in sleeves.
Ribbed collar, cuffs and hem.
Unbranded size label at neckline.
Regenerated cotton is made from 100% pre-consumer waste.



Size:	XS	S	M	L	XL	XXL
Chest (to fit):	32	36	40	44	48	52

Sedex



AW APPROVER
VEGAN

PR695 Premier Zip Neck Sweater

55% cotton/45% acrylic.
12 gauge. Fine knit. Easy care. Soft feel.
Set in sleeves. Zip neck. Ribbed cuffs and hem.



Size:	XS	S	M	L	XL	XXL	3XL	4XL
Chest (to fit):	30	34	38	42	46	50	54	58



EASY
CARE

EA061

écologie.
by AWDiS



PR695

PREMIER®





H718

HENBURY
CUT-OUT LABEL

H718 Henbury Unisex Zip Through Cardigan

50% cotton/50% acrylic.
12 gauge. Double ribbed baseball style collar. Covered full length metal zip.
Semi-fashioned sleeves. Two front pockets with ribbed edges.
1x1 ribbed cuffs and hem. Cut out label.



Size:	XXS	XS	S	M	L	XL	XXL	3XL
Chest (to fit):	32/34	34/36	36/38	38/40	42	44/46	48	50/52



Sedex



10548

SOL'S
the fair spirit



10550 P347

10548 SOL'S Gordon Full Zip Cotton Acrylic Cardigan

49% cotton/49% acrylic/2% polyamide.
12 gauge. Set in sleeves.
1x1 ribbed high collar with inner contrast stripe.
Covered zip.
1x1 elastane rib at cuffs and hem.



Size:	S	M	L	XL	XXL	3XL
Chest (to fit):	36/38	38/40	41/42	43/44	45/47	47/49

BK555 Brook Taverner Dallas Zip Neck Sweater

60% cotton/40% acrylic.
12 gauge. Set in sleeves.
Ribbed collar, cuffs and hem. Taped neck.
Metal zip with faux leather zip pull.
Machine washable.



Size:	S	M	L	XL	XXL
Chest (to fit):	38	40/42	44	46/48	50

Additional sizes available on request.

Sedex

H722 Henbury Lightweight Cotton Acrylic V Neck Cardigan

50% cotton/50% acrylic.
12 gauge. Set in sleeves.
Six self colour horn effect buttons.
1x1 ribbed neck, cuffs and hem.



Size:	XS	S	M	L	XL	XXL	3XL	4XL
Chest (to fit):	34/36	36/38	38/40	42	44/46	48	50/52	54

Sedex



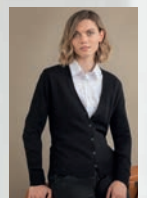
BK555 [7898]

BROOK TAVERNER
SINCE 1912



H722

HENBURY

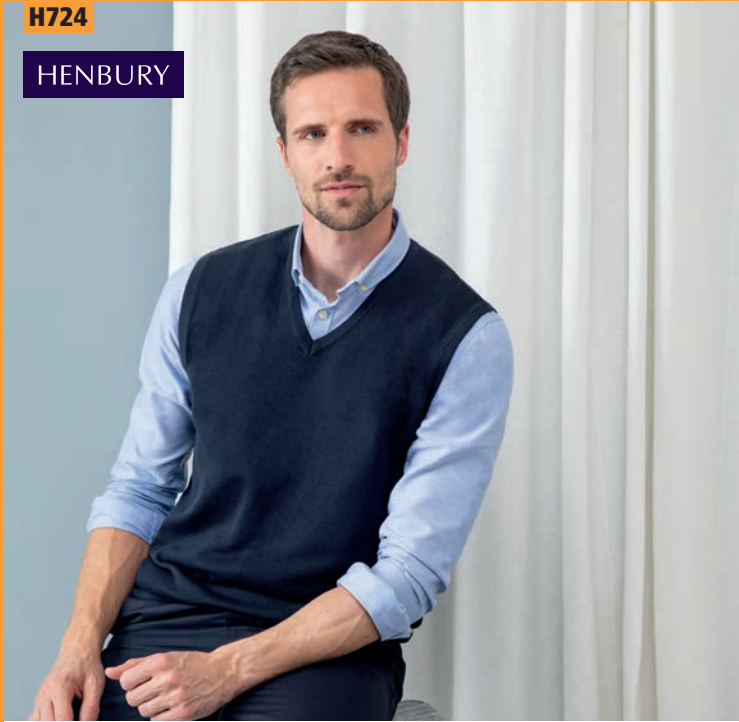


H726 P349

344 SLEEVELESS SWEATERS

H724

HENBURY



H724 Henbury Lightweight Sleeveless Cotton Acrylic V Neck Sweater

50% cotton/50% acrylic.
12 gauge. Semi-fashioned neck and armhole detail.
1x1 ribbed neck, armholes and hem.



Size:	S	M	L	XL	XXL	3XL	4XL
Chest (to fit):	36/38	38/40	42	44/46	48	50/52	54

Sedex

PR699

PREMIER



PR699 Premier Sleeveless Cotton Acrylic V Neck Sweater

55% cotton/45% acrylic.
12 gauge. Cotton rich.
Easy care.
Ribbed neck and armholes.
Deep ribbed hem.



Size:	XS	S	M	L	XL	XXL	3XL	4XL
Chest (to fit):	30	34	38	42	46	50	54	58



EASY
CARE

10591 SOL'S Unisex Gentlemen Sleeveless Cotton Acrylic V Neck Sweater

49% cotton/49% acrylic/2% polyamide.
12 gauge.
1x1 elastane rib at armholes and hem.



Size:	XXS	XS	S	M	L	XL	XXL	3XL
Chest (to fit):	32/34	35/36	36/38	38/40	41/42	43/44	45/47	47/49

716M Russell Collection Sleeveless Cotton Acrylic V Neck Sweater

50% cotton/50% acrylic CottonBlend™.
12 gauge.
1x1 ribbed trim with elastane at hem.
Machine washable at 40°C.



Size:	XXS	XS	S	M	L	XL	XXL	3XL	4XL
Chest (to fit):	32/34	34/36	36/38	38/40	40/42	42/44	44/46	46/48	48/50

10591

SOL'S
the fair spirit



716M

RUSSELL
COLLECTION



H721

HENBURY



H720 P338

H721 Henbury Ladies Lightweight Cotton Acrylic V Neck Sweater

50% cotton/50% acrylic.
12 gauge. Set in sleeves. Semi-fashioned sleeve and
neck detail. 1x1 ribbed neck. Tube knit cuffs and hem.



Size:	XXS	XS	S	M	L	XL	XXL	3XL	4XL
Ladies size:	6	8	10	12	14	16	18	20	22
Chest (to fit):	28/30	30/32	32/34	34/36	36/38	38/40	40/42	42/44	44/46

Sedex®

PR696 Premier Ladies Knitted Cotton Acrylic V Neck Sweater

55% cotton/45% acrylic.
12 gauge. Fine knit. Soft feel and contemporary styling.
Set in sleeves. Machine washable at 40°C.



Ladies size:	8	10	12	14	16	18	20	22	24
Chest (to fit):	33	35	37	39	41	43	45	47	49

PR696

PREMIER®



PR694 P338

RUSSELL COLLECTION

710F Russell Collection Ladies Cotton Acrylic V Neck Sweater

50% cotton/50% acrylic CottonBlend™.
12 gauge.
Set in sleeves.
1x1 ribbed trim with elastane at cuffs and hem.
Machine washable at 40°C.

Size:	XXS	XS	S
Ladies size:	6	8	10
Chest (to fit):	28/30	30/32	32/34
Size:	M	L	XL
Ladies size:	12	14	16
Chest (to fit):	34/36	36/38	38/41
Size:	XXL	3XL	4XL
Ladies size:	18	20	22
Chest (to fit):	41/44	44/47	47/51



710F



710M P338

KUSTOM KIT®

K353 Kustom Kit Ladies Arundel Cotton Acrylic V Neck Sweater

50% cotton/50% acrylic.
12 gauge.
Set in sleeves.
Tubular linked mitred V neck.
1x1 ribbed cuffs and hem.

Ladies size:	6	8	10	12
Chest (to fit):	28	30	32	34
Ladies size:	14	16	18	20
Chest (to fit):	36	38	40	42



Sedex®

K353



K352 P339

HENBURY

H761 Henbury Ladies Acrylic V Neck Sweater

100% acrylic.
12 gauge. Anti-pill finish.
Cashmere touch acrylic. Set in sleeves.
Semi-fashioned sleeve and neck detail.
1x1 ribbed knit neck, cuffs and hem.

Size:	XXS	XS	S
Ladies size:	6	8	10
Chest (to fit):	28/30	30/32	32/34
Size:	M	L	XL
Ladies size:	12	14	16
Chest (to fit):	34/36	36/38	38/40
Size:	XXL	3XL	4XL
Ladies size:	18	20	22
Chest (to fit):	40/42	42/44	44/46



Sedex®

H761



H760 P337

SOL'S®

the fair spirit

TWIN

90011 **SOL'S Golden Cotton
Acrylic V Neck Cardigan**
Online

90012 **SOL'S Ladies Golden
Cotton Acrylic V Neck Cardigan**
P347



**Timeless fit
and classic colours**

H728

HENBURY
CUT-OUT LABEL



H725 P340

**H728 Henbury
Ladies Crew Neck Sweater**

50% cotton/50% acrylic.
12 gauge. Ribbed neck, cuffs and hem.
Semi-fashioned sleeves.
Cut out label.



Size:	XS	S	M	L	XL	XXL
Ladies size:	8	10	12	14	16	18
Chest (to fit):	30/32	32/34	34/36	36/38	38/40	40/42



K355

KUSTOM KIT



**K355 Kustom Kit
Ladies Arundel Round Neck Cardigan**

50% cotton/50% acrylic.
12 gauge.
Reinforced shoulder seams.
Tubular linked neck.
Placket and button detail on cuffs.
1x1 ribbed cuffs and hem.



Ladies size:	6	8	10	12	14	16	18	20
Chest (to fit):	28	30	32	34	36	38	40	42



**10550 SOL'S
Ladies Gordon Full Zip Cotton
Acrylic Cardigan**

49% cotton/49% acrylic/2% polyamide.
12 gauge. Set in sleeves. Fitted cut. 1x1 ribbed high collar with inner contrast stripe.
Covered zip. 1x1 elastane rib at cuffs and hem.
This item runs small in comparison to some other brands.
Please check sizing before decoration.



Size:	S	M	L	XL	XXL
Ladies size:	8/10	10/12	12/14	14/16	16/18

**90012 SOL'S
Ladies Golden Cotton Acrylic V Neck Cardigan**

49% cotton/49% acrylic/2% polyamide.
12 gauge. Fitted cut. Set in sleeves.
Seven self colour buttons.
Ribbed trim with elastane at cuffs and hem.
This item runs small in comparison to some other brands.
Please check sizing before decoration.



Size:	S	M	L	XL	XXL
Ladies size:	8/10	10/12	12/14	14/16	16/18

10550

SOL'S
the fair spirit



10548 P343



90012

SOL'S
the fair spirit



90011 Online



348 LADIES CARDIGANS

H723

HENBURY



H723 Henbury Ladies Cotton Acrylic V Neck Cardigan

50% cotton/50% acrylic.
12 gauge. Set in sleeves. Seven shell effect buttons.
Two front pockets. Longer length.
Tube knit cuffs and hem.



Size:	XXS	XS	S	M	L	XL	XXL	3XL	4XL
Ladies size:	6	8	10	12	14	16	18	20	22
Chest (to fit):	28/30	30/32	32/34	34/36	36/38	38/40	40/42	42/44	44/46

Sedex

BK554 [2309]

BROOK TAVERNER
SINCE 1912



BK554 Brook Taverner Ladies Augusta V Neck Cardigan

60% cotton/40% acrylic.
12 gauge. Set in sleeves. Contrast taped neck.
Self colour pearlised buttons. Ribbed cuffs and hem. Machine washable.



Size:	XS	S	M	L	XL
Ladies size:	4/6	8	10/12	14	16/18

Additional colours and sizes available on request.

Sedex

715F Russell Collection Ladies Cotton Acrylic V Neck Cardigan

50% cotton/50% acrylic CottonBlend™.
12 gauge. Set in sleeves. Self colour buttons.
1x1 ribbed trim with elastane at cuffs and hem.
Machine washable at 40°C.



Size:	XXS	XS	S	M	L	XL	XXL	3XL	4XL
Ladies size:	6	8	10	12	14	16	18	20	22
Chest (to fit):	28/30	30/32	32/34	34/36	36/38	38/41	41/44	44/47	47/51

PR402 Premier Ladies Essential Acrylic V Neck Cardigan

100% acrylic.
12 gauge. Fine knit. Easy care. Soft feel and contemporary styling.
Set in sleeves. Ribbed knit neck, cuffs and hem. Self colour buttons.



Ladies size:	8	10	12	14	16	18	20	22	24	26
Chest (to fit):	33	35	37	39	41	43	45	47	49	51



EASY CARE

715F

RUSSELL
COLLECTION



PR402

PREMIER



PR697


PREMIER

PR697 Premier Ladies Cotton Acrylic V Neck Cardigan

55% cotton/45% acrylic.
12 gauge. Fine knit. Easy care.
Soft feel and contemporary styling. Set in sleeves.
Seven self colour buttons. Machine washable at 40°C.

Ladies size:	8	10	12	14	16
Chest (to fit):	33	35	37	39	41
Ladies size:	18	20	22	24	
Chest (to fit):	43	45	47	49	


H726 Henbury Ladies Lightweight V Neck Cardigan

50% cotton/50% acrylic.
12 gauge. Set in sleeves. Semi-fashioned sleeve and neck detail.
Self colour pearlised buttons. 1x1 ribbed neck, cuffs and hem.
Shorter length. Easy cut out neck label.

Size:	XXS	XS	S	M	L	XL	XXL	3XL	4XL
Ladies size:	6	8	10	12	14	16	18	20	22
Chest (to fit):	28/30	30/32	32/34	34/36	36/38	38/40	40/42	42/44	44/46



KUSTOM KIT

K354 Kustom Kit Ladies Arundel Cotton Acrylic V Neck Cardigan

50% cotton/50% acrylic.
12 gauge.
Reinforced shoulder seams.
Tubular linked neck.
Placket and button detail on cuffs.
1x1 ribbed cuffs and hem.

Ladies size:	6	8	10	12
Chest (to fit):	28	30	32	34
Ladies size:	14	16	18	20
Chest (to fit):	36	38	40	42



Sedex

K354



PREMIER
PR698 Premier Ladies Longline V Neck Cardigan

55% cotton/45% acrylic.
12 gauge. Fine knit.
Easy care. Soft feel.
Long length. Set in sleeves.
Six self colour buttons.
Two front patch pockets.
Ribbed neck, cuffs and hem.

Ladies size:	8	10	12	14	16
Chest (to fit):	33	35	37	39	41
Ladies size:	18	20	22	24	
Chest (to fit):	43	45	47	49	



PR698



H726


HENBURY
CUT-OUT LABEL


H722 P343

HENBURY

CUT-OUT LABEL

H719 Henbury Ladies Longline Open Cardigan

50% cotton/50% acrylic.
12 gauge. Draped front loose fit.
Set in sleeves. Semi-fashioned sleeves.
2x2 ribbed detail from waist to hem and cuffs.
Cut out label.

Size:	XS	S	M	L
Ladies size:	8	10	12	14
Chest (to fit):	30/32	32/34	34/36	36/38
Size:	XL	XXL	3XL	4XL
Ladies size:	16	18	20	22
Chest (to fit):	38/40	40/42	42/44	44/46



Sedex

H719

