

**JustCool®**  
AWDis

**JC001**  
COOL T-SHIRT  
INK BLUE  
P465



FOR EVEN MORE CHOICE  
IN  
**42**  
DIFFERENT  
COLOURS  
FOR EVEN MORE CHOICE

Performance t-shirts	465 - 470
Contrast performance t-shirts	471
Performance polos	473 - 475
Contrast performance polos	476 - 477
Performance vests	478 - 479
Contrast performance vests	479
Long sleeve performance t-shirts	481
Long sleeve base layers	481
Performance sweats & tops	482 - 483
Performance hoodies	483 - 484
Performance zip hoodies	484 - 487
Performance outerwear	488 - 490
Ladies performance t-shirts	491 - 492
Ladies long sleeve performance t-shirts	492 - 493
Ladies performance polos	494 - 495
Ladies performance vests	495 - 497
Ladies contrast performance vests	497
Ladies sports bras & crop tops	498 - 499
Ladies performance sweats & tops	500
Ladies performance hoodies & zip hoodies	501 - 503
Ladies performance outerwear	504 - 505
Performance accessories	505
Finden & Hales track collection	507
Performance pants	508 - 510
Performance shorts	511 - 513
Ladies performance pants	514 - 518
Ladies performance shorts & skorts	518 - 519
Sports - cycling	521
Sports - SOL'S football	522 - 523
Sports - Canterbury rugby	524 - 529
Sports - Glenmuir golfwear	529 - 533
Sports - Sunderland golfwear	533



**JC005**  
LADIES COOL  
T-SHIRT  
BLUSH  
P491



**JC001B**  
KIDS COOL T-SHIRT  
BURGUNDY  
P660

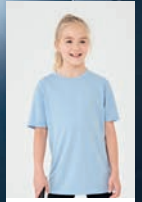
**TOP  
PERFORMANCE  
GREAT VALUE**

{ PETA - APPROVED  
VEGAN }



**JustCool**  
*AWDis*


JC005 P491



JC001B P660



PERFORMANCE

**JC001 AWDIs**  
**Cool T-Shirt**

100% polyester.  
 Neoteric™ textured fabric with inherent wickability.  
 UPF 40+ UV protection.  
 Relaxed fit.  
 Self fabric collar.  
 Taped neck.  
 Twin needle stitching.  
 Tear out label.

Weight: 140 gsm

Size:	XS	S	M	L	XL	XXL	3XL**	4XL**	5XL**
Chest (to fit):	35/37	37/39	39/41	41/43	43/45	45/48	48/50	51/53	54/56

\*Available in 3XL.

\*\*Available in 3XL, 4XL and 5XL.





# 466 PERFORMANCE T-SHIRTS

11939

**SOL'S**  
the fair spirit



01159 Online



01166 Online



## 11939 SOL'S Sporty Performance T-Shirt

100% polyester.  
Textured breathable fabric.  
Self fabric bound collar.  
Raglan sleeves.  
Twin needle sleeves and hem.  
Curved back hem.  
Suitable for sublimation printing.

Weight: 140 gsm

Size:	XXS	XS	S	M
Chest (to fit):	32/34	35/36	36/38	38/40
Size:	L	XL	XXL	3XL
Chest (to fit):	41/42	43/44	45/47	47/49



SR287

**SPIRO**



SR287B P660

NEW  
COLOURS

## SR287 Spiro Impact Performance Aircool T-Shirt

100% textured polyester.  
Breathable, quick drying, high-tech stretch fabric. Comfort fit. Raglan sleeves. Flatlock stitching. Tag free.

Weight: 130 gsm

Size:	XXS	XS	S	M	L
Chest (to fit):	32	35	38	40	43
Size:	XL	XXL	3XL	4XL*	5XL*
Chest (to fit):	46	48	50	52	54

\*Available in 4XL and 5XL.



## SS210 Fruit of the Loom Performance T-Shirt

100% textured polyester.  
Moisture wicking with quick dry performance. Self fabric collar. Taped neck. Raglan sleeves with cover stitching. Twin needle sleeves and hem. Printed neck label.

Weight: 140 gsm

Size:	S	M	L	XL	XXL
Chest (to fit):	35/37	38/40	41/43	44/46	47/49



SS210 [613900]



JC020

**JustCool**  
AWDis



JC025 P491



JC020B P660



PERFORMANCE

## JC020 AWDIs Cool Smooth T-Shirt

100% polyester.  
Neoteric™ smooth fabric with inherent wickability.  
UPF 30+ UV protection.  
Relaxed fit.  
Self fabric collar.  
Taped neck.  
Twin needle stitching.  
Tear out label.



Weight: 135 gsm

Size:	XS	S	M	L	XL	XXL	3XL
Chest (to fit):	35/37	37/39	39/41	41/43	43/45	45/48	48/50



Tear Out



EA004

*écologie.*  
byAWDis

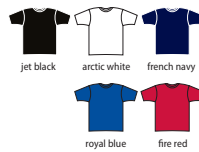


EA004F P491



## EA004 Ecologie Ambaro Recycled Sports T-Shirt

100% recycled polyester.  
Textured birdseye knit.  
Fashion fit. Ribbed collar. Taped neck.  
Side seams. Twin needle sleeves and hem.  
Unbranded size label at neckline.



Weight: 140 gsm

Size:	S	M	L	XL	XXL
Chest (to fit):	36	40	44	48	52



AW APPROVED  
VEGAN

## GD120 Gildan Performance® T-Shirt

100% polyester.  
Jersey feel fabric. Wicking properties. 3/4" ribbed collar.  
Taped neck. Tubular body/side seams (some colours in transition). Twin needle sleeves and hem. Tear out label.



Weight: White 161 gsm, Cols 170 gsm

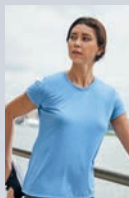
Size:	S	M	L	XL	XXL	3XL
Chest (to fit):	34/36	38/40	42/44	46/48	50/52	54



Tear Out

GD120 [42000]

**GILDAN**  
PERFORMANCE®



GD170 Online



GD120B Online





# 468 PERFORMANCE T-SHIRTS

JC011

**JustCool™**  
AWDis



## JC011 AWDIs SuperCool™ Performance T-Shirt

100% polyester piqué. SuperCool™ textured fabric with superior wicking properties and an anti-bacterial finish. UPF 30+ UV protection. Self fabric collar and side panels. Twin needle stitching. Tear out label.

Weight: 170 gsm

Size:	S	M	L	XL	XXL
Chest (to fit):	37/39	39/41	41/43	43/45	45/48



K555

KUSTOM KIT



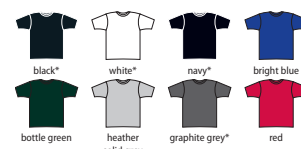
## K555 Kustom Kit Regular Fit Cooltex® Plus Wicking T-Shirt

100% textured polyester. Cooltex® Plus wicking yarn. 1x1 ribbed collar. Self fabric taped neck and shoulders. Topstitched front collar. Twin needle sleeves and hem. Removable adhesive neck label.

Weight: 140 gsm

Size:	XS	S	M	L
Chest (to fit):	32/34	36/38	40	42
Size:	XL	XXL	3XL	4XL*
Chest (to fit):	44	46/48	50/52	54/56

\*Available in 4XL.



## GD124 Gildan Performance® Core T-Shirt

100% polyester. Smooth knit. Wicking properties. Classic fit. Seamed single needle 3/4" collar. Side seams. Twin needle sleeves and hem. Tear out label.

Weight: White 156 gsm, Cols 159 gsm

Size:	S	M	L	XL	XXL	3XL
Chest (to fit):	34/36	38/40	42/44	46/48	50/52	54



## SR253M Spiro Quick Dry Performance T-Shirt

100% textured polyester interlock. Quick dry performance fabric. Self fabric collar. Taped neck. Cover stitch seams. Flatlock stitched seams. Printed neck label. Reflective branding on bottom right hem/no branding (some colours in transition).

Weight: 160 gsm

Size:	S	M	L	XL	XXL
Chest (to fit):	37	40	43	46	49



PERFORMANCE

GD124 [46000]

**GILDAN®**  
PERFORMANCE®

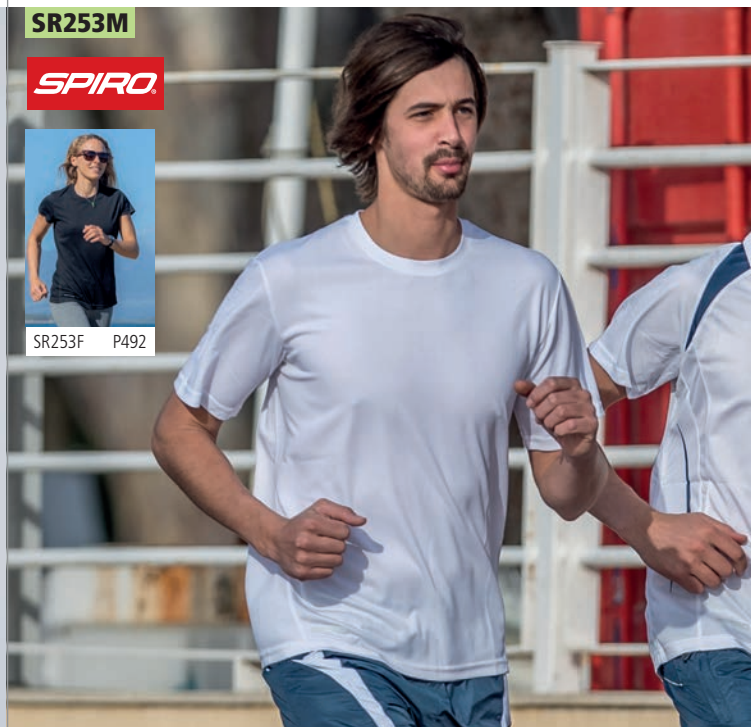


SR253M

**SPIRO®**



SR253F P492







H024

**HENBURY**  
CUT-OUT LABEL



## H024 Henbury HiCool® Performance T-Shirt

100% HiCool® polyester interlock.  
HiCool® permanent wicking fabric.  
Easy care, quick drying fabric. Slim fit. Self fabric collar and cuffs.  
Taped neck. Twin needle hem. Cut out label. 60°C wash.  
Suitable for sublimation printing.

Weight: 170 gsm



Size:	XS	S	M	L	XL	XXL	3XL	4XL
Chest (to fit):	34/36	36/38	38/40	42	44/46	48	50/52	54

Hi Cool®

EASY CARE



JC110

**JustCool**  
AWDis

## JC110 AWDIs Cool Urban Fitness T-Shirt

60% cotton/40% polyester.  
UPF 40+ UV protection.  
Quick drying with inherent stretch properties.  
Active fit. Self fabric collar. Taped neck.  
Twin needle stitching. Tear out label.

Weight: 160 gsm



Size:	XS	S	M	L	XL	XXL
Chest (to fit):	35/37	37/39	39/41	41/43	43/45	45/48

Sedex®

AN APPROVED  
VEGAN

URBAN  
COOL  
UNIVERSAL STYLE

Tear Out

## K939 Gamegear Compact Stretch Performance T-Shirt

90% polyester/10% spandex.  
Self fabric double layer ribbed collar.  
Taped neck. Forward shoulder seams.  
Ergonomic side seams. Flatlock stitched seams.  
Twin needle sleeves and hem.

Weight: 160 gsm



Sedex®

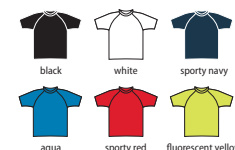


Size:	XS	S	M	L	XL	XXL
Chest (to fit):	32/34	36/38	40	42	44	46/48

## PA4007 Proact Surf T-Shirt

92% polyester/8% elastane.  
Quick drying stretch fabric. 40+ UV protection.  
Self fabric high neck. Raglan sleeves. Elasticated tab on inside front  
hem to insert shorts drawcord and hold the t-shirt down.  
Contrast flatlock stitching. Twin needle cuffs and hem.

Weight: 160 gsm

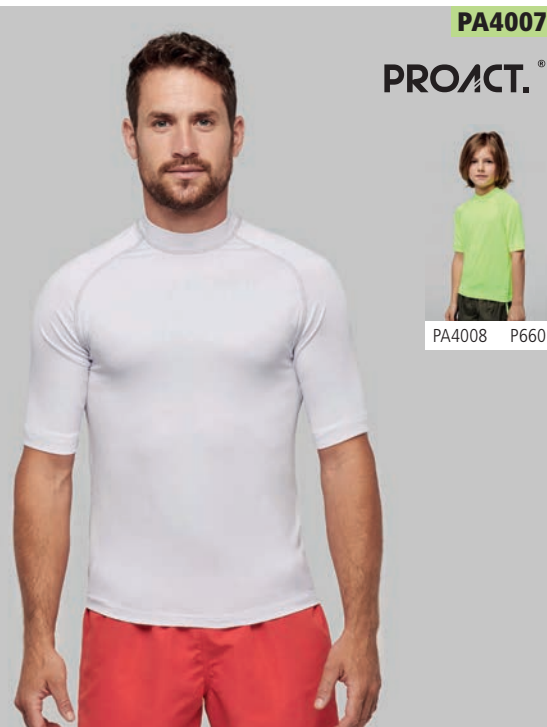


Size:	XS	S	M	L	XL	XXL
Chest (to fit):	32/34	34/36	38	40	42	44/46



K939

**GAMEGEAR®**



PA4007

**PROACT.®**



PA4008 P660



# 470 PERFORMANCE T-SHIRTS

JC004

**JustCool**  
AWDis



## JC004 AWDIs Cool Urban T-Shirt

100% polyester.  
Smooth marl effect fabric.  
UPF 30+ UV protection. Relaxed fit. Self fabric collar.  
Taped neck. Twin needle stitching. Tear out label.

Weight: 155 gsm

Size:	XS	S	M	L	XL	XXL
Chest (to fit):	35/37	37/39	39/41	41/43	43/45	45/48



Tear Out



JC003

**JustCool**  
AWDis



JC003B P661



## JC003 AWDIs Cool Contrast Wicking T-Shirt

100% polyester. Neoteric™ textured fabric with inherent wickability. UPF 40+ UV protection. Relaxed fit. Self fabric collar. Taped neck. Raglan sleeves. Contrast inserts on front and back of sleeves. Twin needle stitching. Printed/tear out label (some colours in transition).

Weight: 140 gsm

Size:	S	M	L
Chest (to fit):	37/39	39/41	41/43
Size:	XL	XXL	
Chest (to fit):	43/45	45/48	



Tear Out



## TL310 Tombo Seamless T-Shirt

57% nylon/43% polyester.  
Fitted style with high-stretch fabric.  
Melange effect. Self fabric bound collar.  
Raglan sleeves with contrast flatlock stitching.  
Textured knit detail along raglan seams and sides.  
Blind stitched cuffs and hem.  
Seamless knit. Tear out label.

Weight: 208 gsm

Size:	XS/S	M/L	XL/XXL
Chest (to fit):	34/38	38/42	44/48



dark grey marl



Tear Out

## TL515 Tombo Slim Fit T-Shirt

90% polyester/10% elastane.  
Slim fit. Self fabric neckline. Raglan sleeves.  
Mesh side panels and back yoke. Flatlock stitching.  
Twin needle sleeves and hem.  
Tear out label.

Weight: 150 gsm

Size:	XS	S	M	L	XL	XXL
Chest (to fit):	34/36	36/38	38/40	42	44/46	48



grey marl/grey

Tear Out

PERFORMANCE

TL310



TL515







**K991**

**GAMEGEAR®**



K966 Online

## K991 Gamegear Cooltex® T-Shirt

100% polyester.  
Textured fabric is moisture wicking allowing you to stay cool, dry and comfortable. Self fabric collar. Contrast binding over shoulders, down back and round to front. Flatlock stitching down sleeves, front and back. Twin needle sleeves and hem. Printed back neck label. Superior printing surface.

Weight: 140 gsm

Size:	XS	S	M	L
Chest (to fit):	32/34	36/38	40	42
Size:	XL	XXL	3XL	
Chest (to fit):	44	46/48	50/52	



**COOLTEX®**

## K930 Gamegear Cooltex® Training T-Shirt

100% polyester micro mesh.  
Fabric is moisture wicking allowing you to stay cool, dry and comfortable. Self fabric neck. Contrast shoulder and side panels. Contrast binding on side panels. Twin needle sleeves and hem. Curved back hem. Printed back neck label.

Weight: 140 gsm

Size:	S	M	L	XL	XXL
Chest (to fit):	36/38	40	42	44	46/48



**COOLTEX®**



**K930**

**GAMEGEAR®**



K940 Online

## FINDEN+HALES

### LV290 Finden & Hales Unisex Team T-Shirt

100% polyester.  
Single jersey.  
Wicking finish keeps you dry and comfortable.  
Raglan sleeves.  
Taped neck.  
Contrast back collar, shoulder and sleeve panels.  
Twin needle cuffs and hem.

Weight: 160 gsm

Size:	XS	S	M	L
Chest (to fit):	34/36	36/38	38/40	42
Size:	XL	XXL	3XL	
Chest (to fit):	44/46	48	50/52	



**LV290**

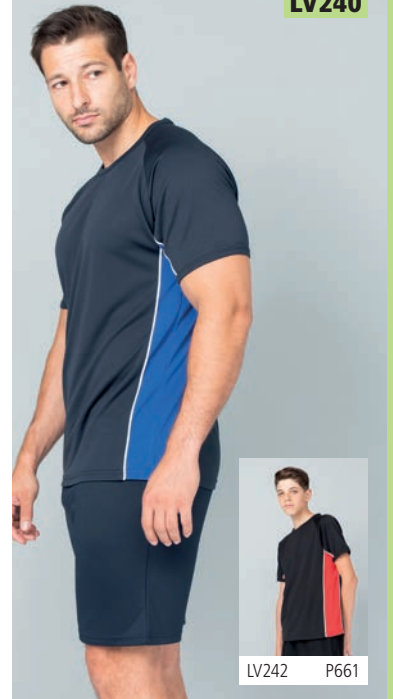
## FINDEN+HALES

### LV240 Finden & Hales Performance Panel T-Shirt

100% polyester.  
Permanent wicking fabric keeps you dry and comfortable. Birds eye knit. Self fabric collar. Raglan sleeves.  
Contrast piping and panelling on underarms and sides.  
Twin needle hem.

Weight: 140 gsm

Size:	XS	S	M	L
Chest (to fit):	34/36	36/38	38/40	42
Size:	XL	XXL	3XL	
Chest (to fit):	44/46	48	50/52	



**LV240**

LV242 P661

PERFORMANCE

## PROACT.®

### PA4005 Proact Unisex University T-Shirt

100% polyester mesh.  
Quick drying fabric.  
Striped contrast ribbed neckline.  
Twin needle sleeves and hem.

Weight: 130 gsm

Size:	XS	S	M	L
Chest (to fit):	32/34	34/36	38	40
Size:	XL	XXL	3XL	
Chest (to fit):	42	44/46	48/50	



**PA4005**



# JustCool®

## AWDis



**JC110 COOL**  
**URBAN FITNESS**  
**T-SHIRT**  
**COBALT NAVY**  
**P469**



**JC116**  
**LADIES COOL**  
**CROSS BACK LONG**  
**SLEEVE T-SHIRT**  
**JET BLACK**  
**P493**



**BOOST  
YOUR TEAM  
WORKOUT**





SR288

**SPIRO**

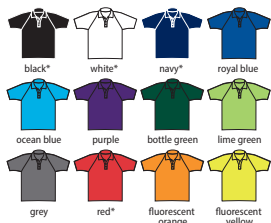
## SR288 Spiro Impact Performance Aircool Polo Shirt

100% textured polyester. Quick dry breathable high-tech stretch fabric. Lightweight. Comfort fit. Ribbed collar. Three self colour button placket. Raglan sleeves. Top stitched shoulders and sleeve detail. Twin needle sleeves and hem. Tag free.

Weight: 135 gsm

Size:	XXS	XS	S	M	L
Chest (to fit):	32	35	38	40	43
Size:	XL	XXL	3XL	4XL*	5XL*
Chest (to fit):	46	48	50	52	54

\*Available in 4XL and 5XL.



**X**  
No Label

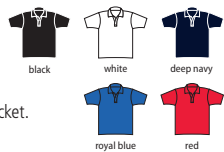
**SPIRO**  
**IMPACT**  
PERFORMANCE WEAR  
**STRETCH**  
EXCEPTIONAL ELASTICITY

## SS212 Fruit of the Loom Performance Polo Shirt

100% textured polyester. Moisture wicking fabric with quick dry performance. Self fabric collar. Taped neck. Three self colour button placket. Twin needle sleeves and hem. Printed back neck label.

Weight: 140 gsm

Size:	S	M	L	XL	XXL	3XL
Chest (to fit):	35/37	38/40	41/43	44/46	47/49	50/52



**COOL**  
**WEAR**

SS212 [630380]

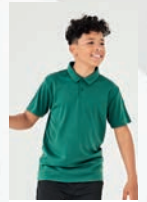


JC040

**JustCool**  
AWDs



JC045 P494



JC040B P650

## JC040 AWDs Cool Polo Shirt

100% polyester. Neoteric™ textured fabric with inherent wickability. UPF 40+ UV protection. Self fabric collar. Taped neck. Three self colour button placket. Twin needle sleeves and hem. Tear out label.

Weight: 140 gsm

Size:	S	M	L	XL
Chest (to fit):	37/39	39/41	41/43	43/45
Size:	XXL	3XL**	4XL*	5XL*
Chest (to fit):	45/48	48/50	51/53	54/56

\*Available in 4XL and 5XL.

\*\*Not available in 3XL.



100% APPROVED **Sedex**



Tear Out





# 474 PERFORMANCE POLOS

JC021

**JustCool**  
AWDis

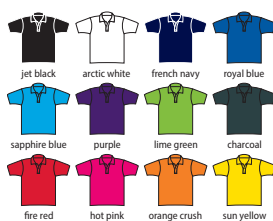


## JC021 AWDIs Cool Smooth Polo Shirt

100% polyester.  
Neoteric™ smooth fabric with inherent wickability. UPF 30+ UV protection. Relaxed fit. Ribbed collar. Taped neck. Three self colour button placket. Twin needle stitching. Tear out label.

Weight: 135 gsm

Size:	XS	S	M	L
Chest (to fit):	35/37	37/39	39/41	41/43
Size:	XL	XXL	3XL	
Chest (to fit):	43/45	45/48	48/50	



JC041

**JustCool**  
AWDis

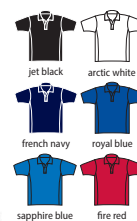


## JC041 AWDIs SuperCool™ Performance Polo Shirt

100% polyester piqué.  
SuperCool™ textured fabric with superior wicking properties and an anti-bacterial finish. UPF 30+ UV protection. Flat knit ribbed collar. Self fabric sapphire blue taped neck. Three self colour button placket. Self fabric side panels. Drop hem. Twin needle stitching. Tear out label.

Weight: 170 gsm

Size:	S	M	L	XL	XXL
Chest (to fit):	37/39	39/41	41/43	43/45	45/48



## K455 Kustom Kit Cooltex® Plus Micro Mesh Polo Shirt

100% polyester micro mesh.  
Textured fabric is moisture wicking allowing you to stay cool, dry and comfortable. 1x1 ribbed collar. Self fabric taped neck. Three button placket. Twin needle sleeves and hem. Removable adhesive label.

Weight: 140 gsm

Size:	XS	S	M	L	XL	XXL	3XL
Chest (to fit):	32/34	36/38	40	42	44	46/48	50/52



## K444 Kustom Kit Regular Fit Cooltex® Plus Piqué Polo Shirt

100% polyester.  
Cooltex® Plus wicking finish. 1x1 ribbed knit collar. Taped neck and shoulders. Two button slanted placket. Side vents. Twin needle stitching.

Weight: 180 gsm

Size:	XS	S	M	L
Chest (to fit):	32/34	36/38	40	42
Size:	XL	XXL	3XL	4XL*
Chest (to fit):	44	46/48	50/52	54/56



\*Available in 4XL.

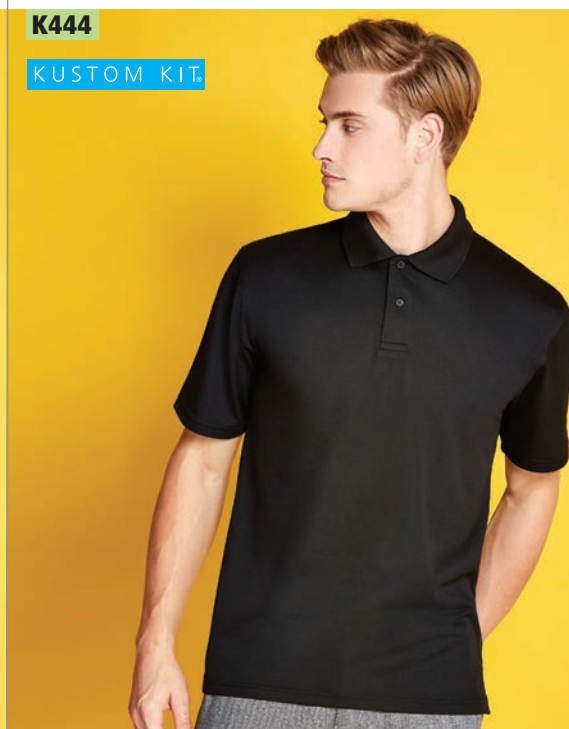
K455

KUSTOM KIT



K444

KUSTOM KIT







PR630 P177

## PR630 Premier Coolchecker® Plus Piqué Polo Shirt

100% Coolplus® polyester.  
Double piqué knit. Coolplus® wicking yarn.  
Easy care fabric. Quick dry. Antimicrobial fabric treatment. Snag, crease and shrink resistant.  
Semi-fitted. Knitted bound collar and cuffs. Three self colour button placket. Side panels. 60°C wash.

Weight: 185 gsm

Size:	S	M	L	XL	XXL
Chest (to fit):	35	38	41	44	47
Size:	3XL	4XL	5XL*	6XL*	
Chest (to fit):	50	53	56	59	

\*Available in 5XL and 6XL.



## H475 Henbury Coolplus® Wicking Piqué Polo Shirt

100% polyester micro piqué.  
Coolplus® performance permanent wicking fabric draws moisture away from skin to keep you cool and dry. Easy care fabric. Flat knit collar. Taped neck. Locker patch. Two self colour button placket. Side vents. Twin needle stitching. 60°C wash.

Weight: 180 gsm

Size:	XXS*	XS	S	M	L
Chest (to fit):	32/34	34/36	36/38	38/40	42
Size:		XL	XXL	3XL	4XL*
Chest (to fit):		44/46	48	50/52	54

\*Available in XXS, 4XL and 5XL.



## 01180 SOL'S Performer Piqué Polo Shirt

100% textured polyester.  
Breathable fabric. Contrasting details on neck tape, placket and side vents. Three pearlised button placket. Twin needle sleeves and hem. Suitable for sublimation printing.

Weight: 180 gsm

Size:	S	M	L	XL	XXL	3XL
Chest (to fit):	36/38	38/40	41/42	43/44	45/47	47/49

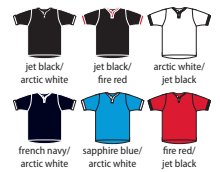


## JC044 AWDIs Cool Stand Collar Sports Polo Shirt

100% polyester.  
Neoteric™ textured fabric with wickability and quick drying properties. UPF 40+ UV protection. Stand collar. Contrast detail on collar, placket and cuffs. Two button placket. Twin needle curved drop hem.

Weight: 140 gsm

Size:	S	M	L	XL	XXL
Chest (to fit):	37/39	39/41	41/43	43/45	45/48



01179 Online





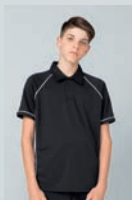
# 476 CONTRAST PERFORMANCE POLOS

LV370

## FINDEN-HALES



LV371 P495



LV372 P650



### LV370 Finden & Hales Performance Piped Polo Shirt

100% polyester Coolplus® piqué.  
Coolplus® modified polyester fibre draws moisture away from skin to keep you cool and dry.  
Self fabric collar. Two self colour button placket.  
Contrast piping on raglan seams, sides and cuffs.  
Side vents. Twin needle hem.  
60°C wash.

Weight: 200 gsm

Size:	XS*	S	M	L	XL	XXL	3XL
Chest (to fit):	34/36	36/38	38/40	42	44/46	48	50/52

\*Available in XS.



Coolplus®

LV381

## FINDEN-HALES



LV382 P650



### LV381 Finden & Hales Unisex Contrast Panel Piqué Polo Shirt

98% polyester/2% elastane micro piqué.  
Moisture wicking finish. High stretch fabric.  
Ribbed collar and cuffs. Taped neck.  
Three self colour button narrow placket.  
Contrast shoulder and sleeve panels.  
Twin needle hem. Tear out label.

Weight: 180 gsm



Tear Out

Size:	XS	S	M
Chest (to fit):	34/36	36/38	38/40
Size:	L	XL	XXL
Chest (to fit):	42	44/46	48

### JC043 AWDIs Cool Contrast Polo Shirt

100% polyester.  
Neoteric™ textured fabric with inherent wickability.  
UPF 40+ UV protection. Self fabric collar. Taped neck.  
Three self colour button placket. Raglan sleeves.  
Contrast inserts on sleeves, front and back.  
Twin needle sleeves and hem. Tear out label.

Weight: 140 gsm

VEGAN Sedex®

Size:	S	M	L	XL	XXL
Chest (to fit):	37/39	39/41	41/43	43/45	45/48



Tear Out



### K938 Gamegear Cooltex® Active Polo Shirt

100% polyester.  
Textured fabric is moisture wicking allowing you to stay cool, dry and comfortable. 1x1 flat knit collar. Contrast taped neck.  
Three self colour button placket. Contrast centre sleeve, underarm and side panels with white piping. Twin needle sleeves and hem. Printed back neck label.

Weight: 140 gsm

Size:	S	M	L	XL	XXL
Chest (to fit):	36/38	40	42	44	46/48



COOLTEX®

PERFORMANCE

JC043

JustCool®  
AWDis



K938

GAMEGEAR®





SR177M

**SPIRO**



SR177F P494

## FINDEN+HALES

### LV310 Finden & Hales Performance Panel Polo Shirt

100% Coolplus® polyester.  
Wicking fabric keeps you dry and comfortable.  
Textured piqué fabric.  
Flat knit collar.  
Taped neck.  
Two self colour button placket.  
Contrast piping on raglan seams and cuffs.  
Contrast side panels.  
Side vents.  
Twin needle hem.

Weight: 180 gsm

Size:	XS	S	M
Chest (to fit):	34/36	36/38	38/40
Size:	L	XL	XXL
Chest (to fit):	42	44/46	48



**Coolplus®**

LV310



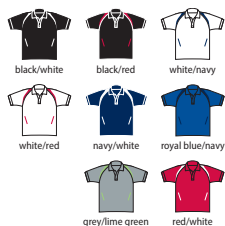
### SR177M Spiro Team Spirit Polo Shirt

100% textured polyester.  
Cool-Dry® waffle knit mesh panels.  
Fabric is moisture wicking and quick drying.  
Three self colour button placket.  
Contrast panel on raglan seams. Contrast print on sides.  
Twin needle stitching. Branded bottom right hem.

Weight: 145 gsm

Size:	S	M	L	XL
Chest (to fit):	38	40	42	44
Size:	XXL	3XL	4XL	
Chest (to fit):	46	48	50	

**COOL-DRY®**  
100% COMFORT FIT FABRIC



## FINDEN+HALES

### LV355 Finden & Hales Contrast Panel Polo Shirt

100% textured polyester.  
Moisture wicking fabric.  
Quick drying.  
Shaped fit.  
Shorter collar.  
Three button placket.  
Bound cuffs.  
Contrast side panels and white piping.  
Twin needle hem.

Weight: 140 gsm

Size:	XS	S	M
Chest (to fit):	34/36	36/38	38/40
Size:	L	XL	XXL
Chest (to fit):	42	44/46	48



LV355



### K974 Gamegear Cooltex® Riviera Polo Shirt

100% polyester. Textured fabric is moisture wicking allowing you to stay cool, dry and comfortable.  
Self fabric collar. Taped neck. Three self colour button placket. Contrast inserts on raglan seams, upper front and lower back. Contrast tipping on cuff ends.  
Curved back drop hem.

Weight: 140 gsm

Size:	S	M	L	XL	XXL
Chest (to fit):	36/38	40	42	44	46/48



**COOLTEx®**  
WRAP  
100% COMFORT FIT FABRIC

K974

**GAMEGEAR®**



## FINDEN+HALES

### LV350 Finden & Hales Performance Team Polo Shirt

100% Coolplus® polyester.  
Coolplus® modified polyester fibre draws moisture away from skin to keep you cool and dry. Slimmer fit. Ribbed collar. Taped neck.  
Two self colour button placket. Cuffed sleeves.  
Contrast panelling and piping down raglan seams and sides. Side vents.  
Twin needle hem.

Weight: 150 gsm

Size:	S	M	L	XL	XXL
Chest (to fit):	36/38	38/40	42	44/46	48



**Coolplus®**

LV350





# 478 PERFORMANCE VESTS

JC007

**JustCool**  
AWDis



JC015 P495



JC007B P659



## JC007 AWDIs Cool Vest

100% polyester.  
Neoteric™ textured fabric with inherent wickability.  
UPF 40+ UV protection. Self fabric bound neckline  
and armholes. Twin needle curved drop hem.  
Tear out label.

Weight: 140 gsm

Size:	S	M	L	XL	XXL
Chest (to fit):	37/39	39/41	41/43	43/45	45/48



JC022

**JustCool**  
AWDis



JC026 P495



## JC022 AWDIs Cool Smooth Sports Vest

100% polyester.  
Neoteric™ smooth fabric with inherent wickability and quick  
drying properties. UPF 30+ UV protection. Taped neck.  
Offset shoulder seams for comfort. Tear out label.

Weight: 135 gsm

Size:	S	M	L	XL	XXL
Chest (to fit):	37/39	39/41	41/43	43/45	45/48



## 02073 SOL'S Sporty Performance Tank Top

100% polyester.  
Textured breathable fabric. Self fabric bound neck and  
armholes. Twin needle hem. Tear out label.  
Suitable for sublimation printing.

Weight: 140 gsm

Size:	S	M	L	XL	XXL	3XL
Chest (to fit):	36/38	38/40	41/42	43/44	45/47	47/49



## JC009 AWDIs Cool Muscle Vest

100% polyester.  
Neoteric™ textured fabric with inherent wickability.  
UPF 40+ UV protection.  
Self fabric bound neckline and armholes.  
Thin shoulder straps. Racer back style.  
Twin needle hem. Tear out label.

Weight: 140 gsm

Size:	S	M	L	XL	XXL
Chest (to fit):	37/39	39/41	41/43	43/45	45/48



PERFORMANCE

02073

**SOL'S**  
the fair spirit



02117 Online



JC009

**JustCool**  
AWDis







JC053

**JustCool**  
AWDis

## JC053 AWDIs

### Cool Urban Sleeveless Muscle Hoodie

60% polyester/35% cotton/5% elastane. UrbanCool™ lightweight french terry fabric. Wicking and quick drying properties. UPF 40+ UV protection. Two panel hood with self colour drawcord. Drop raw edge armholes. Side panels. Twin needle hem. Tear out label.

Weight: 240 gsm



Size:	S	M	L	XL	XXL
Chest (to fit):	37/39	39/41	41/43	43/45	45/48



## JC008 AWDIs

### Cool Contrast Vest

100% polyester. Neoteric™ textured fabric with inherent wickability. UPF 40+ UV protection. Self fabric bound neckline and armholes. Contrast side panels. Twin needle curved hem. Tear out label.

Weight: 140 gsm



Size:	S	M	L	XL	XXL
Chest (to fit):	37/39	39/41	41/43	43/45	45/48



## PA4004 Proact

### Unisex University Jersey

100% polyester mesh. Quick drying fabric. V neckline. Striped contrast ribbed neck and armholes. Twin needle hem.

Weight: 130 gsm



Size:	XS	S	M	L	XL	XXL	3XL
Chest (to fit):	32/34	34/36	38	40	42	44/46	48/50

**PA4004**  
**PROACT.**



## SR278M Spiro

### Basketball Top

100% polyester. Breathable and lightweight. Quick dry treated textured fabric. Loose fit. Contrast bound neckline and armholes. Contrast stripes down sides. Flatlock stitched seams. Tag free.

Weight: 145 gsm



Size:	XS	S	M	L	XL	XXL	3XL	4XL
Chest (to fit):	36	38	40	42	44	46	48	50



**SR278M**

**SPIRO**





480 PERFORMANCE

WASH UP TO 60 DEGREES C



Coolplus®



BRILLIANT PERFORMANCE.  
COOLER TO WEAR.

H475 | H476

# HENBURY

H475

COOLPLUS® WICKING PIQUÉ POLO SHIRT

Sizes: XXS-5XL\* P475

H476

LADIES COOLPLUS® WICKING PIQUÉ POLO SHIRT

Sizes: XS-3XL P494

Also available in

H478 Unisex Long Sleeve Coolplus® Piqué Polo Shirt P202

H482 Coolplus® Tipped Polo Shirt P180

\*Selected colours available in XXS, 4XL and 5XL.



SR254M



SR254F P493



## SR254M Spiro Performance Long Sleeve T-Shirt

100% textured polyester interlock.  
Quick dry performance fabric.  
Self fabric bound collar.  
Taped neck.  
Twin needle sleeves and hem.  
Feature stitching.  
Printed back neck label.

Weight: 160 gsm

Size:	S	M	L	XL	XXL
Chest (to fit):	37	40	43	46	49



JustCool®  
AWDis

## JC002 AWDIs Cool Long Sleeve Wicking T-Shirt

100% polyester. Neoteric™ textured fabric with inherent wickability. UPF 40+ UV protection.  
Self fabric collar. Taped neck. Twin needle stitching. Tear out label.

Weight: 140 gsm

Size:	S	M	L	XL	XXL
Chest (to fit):	37/39	39/41	41/43	43/45	45/48



JC002



JC012 P493

JC018

JustCool®  
AWDis

## JC018 AWDIs Cool Long Sleeve Base Layer

88% polyester/12% elastane.  
UPF 50+ UV protection. Active fit.  
Turtleneck design. Raglan sleeves.  
Overlock stitched seams.  
Twin needle sleeves and hem. Tear out label.

Weight: 180 gsm

Size:	XXS*	XS*	S	M
Chest (to fit):	32/35	35/37	37/39	39/41
Size:	L	XL	XXL	
Chest (to fit):	41/43	43/45	45/48	

\* Available in XXS and XS.



## TL311 Tombo Seamless Long Sleeve Top

57% nylon/43% polyester.  
Melange effect. Fitted style with high-stretch fabric. Seamless knit. Self fabric bound collar.  
Raglan sleeves with contrast flatlock stitching.  
Textured knit detail along raglan seams and on sides. Thumbholes on cuffs. Blind stitched cuffs and hem. Tear out label.

Weight: 208 gsm

Size:	XS/S	M/L	XL/XXL
Chest (to fit):	34/38	38/42	44/48



TL311



K979

GAMEGEAR®

## K979 Gamegear Warmtex® Long Sleeve Base Layer

90% polyester/10% spandex.  
Moisture management system to help keep the body warm during exercise.  
Designed to be worn next to the skin.  
Self fabric collar.  
Flatlock stitched seams.  
Removable adhesive neck label.

Weight: 135 gsm

Size:	XXS	XS	S	M
Chest (to fit):	28/30	32/34	36/38	40
Size:	L	XL	XXL	
Chest (to fit):	42	44	46/48	



## CN360 Canterbury ThermoReg Long Sleeve Base Layer

95% polyester/5% spandex.  
ThermoReg moisture wicking fabric keeps you cool, dry and comfortable. Designed to be worn next to the skin. Self fabric collar. Forward shoulder seams. Underarm ventilation gusset. Offset side seams. Performance seams.  
Twin needle sleeves and hem.  
Branding on centre chest and right arm.

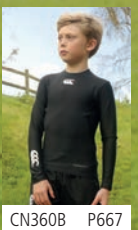
Weight: 220 gsm

Size:	XS	S	M
Chest (to fit):	34/36	37/39	39/41
Size:	L	XL	XXL
Chest (to fit):	41/43	43/45	46/48



THERMOREG

CN360



CN360B P667



JC030



JC035 P500

**JustCool®**  
AWDis

## JC030 AWDIs Cool-Flex™ Half Zip Top

87% polyester/13% elastane.  
Cool-Flex™ stretch fabric with quick dry, wicking properties. Active fit. Stand up collar.  
Reflective tab on back neck. Raglan sleeves.  
Zip neck with chin guard and reflective detail.  
Side panels. Bound cuffs with thumbholes.  
Twin needle hem. Tear out label.

Weight: 280 gsm

Size:	S	M	L
Chest (to fit):	37/39	39/41	41/43
Size:	XL	XXL	
Chest (to fit):	43/45	45/48	



jet black



french navy



silver grey

AN APPROVED  
VEGAN

Sedex®



Tear  
Out



H862



**HENBURY**  
CUT-OUT LABEL

## H862 Henbury Zip Neck Wicking Top

100% polyester fleece back single jersey.  
Wicking finish.  
Smooth marl fabric outer with ribbed inner fleece.  
Raglan sleeves.  
Nylon zip with self colour puller.  
Two front pockets with concealed zips.  
Self fabric cuffs.  
Twin needle hem.  
Easy cut out label.

Weight: 210 gsm

Size:	XS	S	M
Chest (to fit):	34/36	36/38	38/40
Size:	L	XL	XXL
Chest (to fit):	42	44/46	48



black



grey marl



Cut Out

T5602



**TEE JAYS®**

## T5602 Tee Jays Performance Zip Sweatshirt

100% polyester.  
Unbrushed.  
Loose shaped fashion fit.  
Drop shoulder with forward facing seams.  
Full length zip.  
Two front zip pockets.  
Self fabric cuffs and hem.  
Branding on zip pulls.

Weight: 290 gsm

Size:	S	M	L
Chest (to fit):	36/38	38/40	41/42
Size:	XL	XXL	3XL
Chest (to fit):	43/44	45/47	47/49



black



deep navy



dark grey  
melange

LV571

FINDEN +HALES



## LV571 Finden & Hales Contrast Zip Neck Midlayer Top

100% polyester single jersey.  
Wicking finish. Contrast zip neck with stand up collar.  
Contrast shoulder, upperarm and side panels. Concealed right zip pocket. Contrast stretch bound cuffs and hem. Tear out label.

Weight: 165 gsm

Size:	XS	S	M	L	XL	XXL
Chest (to fit):	34/36	36/38	38/40	42	44/46	48



black/  
gunmetal



black/red



navy/royal blue



grey marl/  
black



Tear  
Out

## TL562 Tombo Long Sleeve Zip Neck Performance Top

88% polyester/12% elastane.  
Single jersey with wicking finish. Stand up self fabric collar. Raglan sleeves with flatlock stitching. 1/4 length zip with chin guard and reflective trim. Reflective detail on back of shoulder seams. Concealed zip key pocket on left back panel seam, with inner headphone access. Side panels. Elasticated bound cuffs and hem. Thumbholes and fold over cuffs. Tear out label.

Weight: 190 gsm

Size:	XS	S	M	L	XL	XXL
Chest (to fit):	34/36	36/38	38/40	42	44/46	48



black



grey marl



Tear  
Out

TL562



TL563 P500





**JC031**  
**JustCool**  
AWDis



JC036 P500

## JC031 AWDIs Cool Half Zip Sweat Top

87% polyester/13% elastane.  
CoolFit™ matt finish performance fabric with superior wicking properties. UPF 40+ UV protection. Slim fit. Stand up collar. Raglan sleeves. Zip neck with chin guard. Self fabric contrast bound zip, cuffs and hem. Reflective tab on back of neck to help keep ear phones in place. Tear out label.

Weight: 280 gsm



Size:	S	M	L	XL	XXL
Chest (to fit):	37/39	39/41	41/43	43/45	45/48



**JH006**  
**JustCool**  
AWDis



JH006B P642

## JH006 AWDIs Sports Polyester Hoodie

100% polyester.  
Brushed back fleece. Drop shoulder style. Three panel double fabric hood. Self colour round drawcord with metal tips. Front pouch pocket. Self fabric cuffs and hem. Twin needle stitching. Tear out label.

Weight: 200 gsm



Size:	S	M	L	XL	XXL	3XL
Chest (to fit):	36	40	44	48	52	56



## SR178M Spiro Unisex Zip Neck Trial Training Top

100% polyester. Cool-Dry® mesh panels. Breathable. Fabric is moisture wicking and quick dry. Mandarin collar. Zip neck with inner zip guard and chin guard. Contrast panel detail to front and back. Contrast print on sleeves. Cover stitching.

Weight: 185 gsm



Size:	XS	S	M	L	XL	XXL	3XL
Chest (to fit):	36	38	40	42	44	46	50



## T5600 Tee Jays Performance Hoodie

100% polyester.  
Unbrushed. Loose fashion fit. Drop shoulder style with forward facing seams. Adjustable grown on hood. Front pouch pocket. Self fabric cuffs and hem.

Weight: 290 gsm



Size:	S	M	L	XL	XXL	3XL
Chest (to fit):	36/38	38/40	41/42	43/44	45/47	47/49



**SR178M**



**T5600**





JC052



**JustCool®**  
AWDIs

## JC052 AWDIs Cool Unisex Fitness Hoodie

60% polyester/35% cotton/5% elastane. UrbanCool™ lightweight french terry fabric. UPF 40+ UV protection. Raglan sleeves. Two panel hood with drawcord. Panel detail on sides and sleeves. Self fabric cuffs and hem. Flatlock stitching. Tear out label.

Weight: 240 gsm

Size:	S	M	L
Chest (to fit):	37/39	39/41	41/43
Size:	XL	XXL	
Chest (to fit):	43/45	45/48	



JC037

**JustCool®**  
AWDIs



JC038 P501



## JC037 AWDIs Cool Cowl Neck Top

92% polyester/8% elastane. DynamicCool™ responsive blended fabric. Raglan sleeves. Cowl neck style hood with toggles. Reflective elements on hood. Reflective tab on back neck for ear phone cord. Thumbholes on cuffs. Overlock stitched seams. Twin needle hem. Tear out label.

Weight: 210 gsm

Size:	S	M	L	XL	XXL
Chest (to fit):	37/39	39/41	41/43	43/45	45/48



JC053



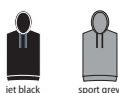
**JustCool®**  
AWDIs

## JC053 AWDIs Cool Urban Sleeveless Muscle Hoodie

60% polyester/35% cotton/5% elastane. UrbanCool™ lightweight french terry fabric. Wicking and quick drying properties. UPF 40+ UV protection. Two panel hood with self colour drawcord. Drop raw edge armholes. Side panels. Twin needle hem. Tear out label.

Weight: 240 gsm

Size:	S	M	L
Chest (to fit):	37/39	39/41	41/43
Size:	XL	XXL	
Chest (to fit):	43/45	45/48	



## SR277M Spiro Hooded T-Shirt Jacket

100% polyester. Lightweight and quick drying. Breathable. Super stretch fabric with ergonomic seams. Integral hood with contrast drawcord. Contrast full length zip. Two front contrast zip pockets. Open cuffs and hem. Tag free.

Weight: 135 gsm

Size:	S	M	L	XL	XXL	3XL
Chest (to fit):	38	41	44	47	50	53



PA360



**PROACT.®**

## PA360 Proact Zip Neck Hooded Sweatshirt

90% polyester/10% elastane. Ultra soft brushed jersey fabric. Raglan sleeves. Grown on adjustable hood. Contrast zip neck with chin guard and inner zip guard. Two front contrast reflective zip pockets. Thumbholes on cuffs.

Weight: 200 gsm

Size:	S	M	L	XL	XXL
Chest (to fit):	34/36	38	40	42	44/46



SR277M

**SPIRO®**



SR277F P503







TL550



TL551 P503

## TL550 Tombo Lightweight Running Hoodie

100% polyester french terry.  
Slim fit. Funnel neck hood with toggles. Full length zip with chin guard and inner zip guard. Raglan sleeves with reflective tape. Two front zip pockets. Inner media pocket. Thumbholes on cuffs. Self fabric bound hem. Flatlock stitching.

Weight: 180 gsm

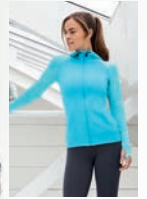


Size:	XS	S	M	L	XL	XXL
Chest (to fit):	34/36	36/38	38/40	42	44/46	48



JC057

JustCool®  
AWDis



JC058 P503

## JC057 AWDIs Cool Contrast Zoodie

Body 89% polyester/11% elastane.  
Hood and sleeves 92% polyester/8% elastane. DynamicCool™ responsive blended fabric. Contrast melange effect grown on adjustable hood and raglan sleeves. Taped neck. Full length zip. Front pouch pockets. Thumbholes on cuffs. Tear out label.

Weight: Body 240 gsm, Hood and sleeves 210 gsm



Size:	S	M	L	XL	XXL
Chest (to fit):	37/39	39/41	41/43	43/45	45/48



## K915 Gamegear Contrast Sports Jacket

89% polyester/11% spandex.  
Brushed back fleece. Raglan sleeves. Grown on hood with stretch bound opening. Taped neck. Full length zip with chin guard and inner zip guard. Contrast inserts on underarms and sides. Two front zip pockets. Stretch bound cuffs and hem. Drop hem. Flatlock stitched seams.

Weight: 180 gsm



grey melange/black



Size:	XS	S	M	L	XL	XXL
Chest (to fit):	32/34	36/38	40	42	44	46/48

## SR245M Spiro Micro Fleece Hoodie

100% polyester.  
Lightweight and quick drying. Breathable. Super stretch fabric with ergonomic seams. Raglan sleeves. Double thickness integral hood. Full length contrast zip with chin guard. Two front pockets. Contrast soft bound hood, cuffs, pockets and hem. Topstitch detail. Tag free.

Weight: 180 gsm



grey/black

Size:	S	M	L	XL	XXL	3XL
Chest (to fit):	38	41	44	47	50	53



K915

GAMEGEAR®



K916 P503



SR245M

SPIRO®



SR245F P504





# FUNCTION X FASHION

TL533 LADIES CROPPED SWEATSHIRT P500

**NEW** TL370 LADIES CORE POCKET LEGGINGS P515





**JH066**

**JustCool®**  
AWDis

## JH066 AWDIs Contrast Sports Polyester Zoodie

100% polyester.  
Brushed back fleece. Raglan sleeves. Three panel hood with contrast lining and drawcord. Full length contrast plastic zip. Contrast stripe on shoulders and sleeves. Front pouch pockets. Twin needle stitching. Tear out label.

Weight: 200 gsm

Size:	S	M	L	XL	XXL	3XL
Chest (to fit):	36	40	44	48	52	56



AB APPROVED  
VEGAN

Tear Out



## PA358 Proact Performance Hooded Jacket

79% polyester/15% viscose/6% elastane.  
Raglan sleeves. Jersey lined hood. Two tone contrast drawcord with plastic tips. Collar high full length low profile zip. Two front zip pockets with fused seams. Contrast elasticated cuffs. Contrast stretch bound hem.

Weight: 310 gsm

Size:	S	M	L	XL	XXL	3XL
Chest (to fit):	34/36	38	40	42	44/46	48/50



deep grey  
heather/black

**PA358**

**PROACT.®**



PA359 P504

**JustCool®**  
AWDis

## JC061 AWDIs Cool Retro Track Zoodie

100% polyester.  
Brushed inner. Relaxed fit. Drop shoulder style. Contrast mesh lined hood with contrast drawcord. Full length zip. Contrast lower body, cuffs and hem. Two front pockets. Ribbed cuffs and hem. Tear out label.

Weight: 220 gsm

Size:	S	M	L
Chest (to fit):	37/39	39/41	41/43
Size:	XL	XXL	
Chest (to fit):	43/45	45/48	



Tear Out

AB APPROVED  
VEGAN



**JC061**

## FINDEN & HALES

### LV340 Finden & Hales Panelled Sports Hoodie

100% polyester.  
Brushed back fleece.  
Single jersey lined hood.  
Funnel neck hood with adjustable toggles.  
Raglan sleeves.  
Contrast panelled sleeves with white piping.  
Full length zip.  
Front pouch pockets.  
Ribbed cuffs and hem.

Weight: 250 gsm

Size:	XS	S	M
Chest (to fit):	34/36	36/38	38/40
Size:	L	XL	XXL
Chest (to fit):	42	44/46	48



**LV340**

## PROACT.®

### PA365 Proact Heather Hooded Jacket

100% polyester.  
Jersey lined hood with contrast drawcord.  
Full length contrast low profile zip with chin guard. Right chest contrast zip pocket.  
Two front contrast zip pockets.  
Panels with topstitch finish.  
Stretch contrast bound cuffs and hem.

Weight: 345 gsm

Size:	S	M	L
Chest (to fit):	34/36	38	40
Size:	XL	XXL	3XL
Chest (to fit):	42	44/46	48/50



light royal blue  
melange/black

light grey  
melange/black



PA366 P504



**PA365**



# 488 PERFORMANCE OUTERWEAR

JC060

**JustCool**  
AWDis



## JC060 AWDIs Cool Unisex Running Jacket

Polyester 330T pongee.  
CoolShield™ coated fabric is showerproof and windproof. Lightweight.  
Full length contrast zip with chin guard. Reflective print detail to zip,  
back neck and cuffs. Two front zip pockets. Inner small hidden opening  
for ear phone cord feed. Drawcord hem. Curved drop hem.  
Tear out label.



Size:	XS	S	M	L	XL	XXL
Chest (to fit):	35/37	37/39	39/41	41/43	43/45	45/48



JC062

**JustCool**  
AWDis



## JC062 AWDIs Cool Contrast Windshield Jacket

100% polyester.  
CoolShield™ coated fabric is showerproof and windproof.  
Lightweight. Grown on adjustable hood. Contrast hood  
and raglan sleeves. Full length contrast zip with reflective piping.  
Two front zip pockets. Bound cuffs and hem. Curved drop hem.



Size:	XS	S	M	L	XL	XXL
Chest (to fit):	35/37	37/39	39/41	41/43	43/45	45/48



## SR180M Spiro Micro-Lite Team Jacket

100% polyester.  
50D microfibre. Mesh lined. Showerproof, wind resistant and breathable.  
Mesh lined body. Polyester lined sleeves. Full length contrast zip.  
Contrast panels on underarms and sides, front and back. Two front zip  
pockets. Part elasticated adjustable cuffs. Adjustable drawcord hem.  
Reflective branding on back, sleeves and right chest.



Size:	XS	S	M	L	XL	XXL	3XL	4XL
Chest (to fit):	36	38	41	44	46	48	50	52



## TL560 Tombo Hi-Vis Performance Jacket

Polyester taslan outer.  
Showerproof and breathable. Three panel adjustable grown on hood.  
Reflective panels across chest, shoulders and sleeves.  
Collar high full length low profile zip. Two front zip pockets.  
Stretch bound cuffs. Drawcord hem. Tear out label.



Size:	XXS	XS	S	M	L	XL	XXL
Chest (to fit):	32/34	34/36	36/38	38/40	42	44/46	48



PERFORMANCE

SR180M

**SPIRO**



TL560

**TOMBO**







SR268M

**SPIRO**



SR268F P505



## SR268M Spiro Fitness Zero Gravity Jacket

Nylon body with 92% polyester/8% elastane hood and sleeves. Polyester faux down padding.

Nylon lining. Showerproof and breathable. Quick dry. Virtually weightless, ideal layer garment. Integral hood. Super stretch hood and sleeves. Quilted body panels. Full length zip. Articulated sleeves. Invisible front zip pockets. Bound hood, cuffs and hem. Thumbholes on cuffs. Reflective detail. Tag free.



black/charcoal



navy/navy



royal blue/navy

Size:	S	M	L	XL	XXL	3XL
Chest (to fit):	38	41	44	47	50	53



## SR266 Spiro Luxe Reflective Hi-Vis Jacket

100% nylon.

Showerproof and windproof. Conforms to EN ISO 20471: 2013 + A1: 2016 class 2. 360° visibility. Luxurious soft feel fabric. Quick drying and lightweight. Breathable mesh back, underarm and side panels. Hanging loop. Stand up collar with brushed inner. Full length zip with inner contrast binding. Elasticated bound collar, cuffs and hem. Two front pockets. Centre back zip pocket. Longer back panel.



neon white

Size:	XXS	XS	S	M	L	XL	XXL	3XL	4XL
Chest (to fit):	34	36	38	41	44	47	50	53	56



SR266

**SPIRO**

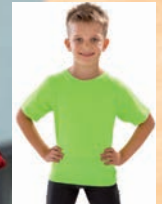


## SR287 SPIRO IMPACT PERFORMANCE AIRCOOL T-SHIRT

P466

## SR287B SPIRO KIDS IMPACT PERFORMANCE AIRCOOL T-SHIRT

P660



\*KIDS COLOURS

## SR288 SPIRO IMPACT PERFORMANCE AIRCOOL POLO SHIRT

P473



PERFORMANCE



**SPIRO**  
by **Result**



PA235

**PROACT.**

## PA235 Proact Dual Fabric Sports Bodywarmer

Polyamide ripstop quilted body.  
90% polyester/10% elastane contrast  
shoulders, sides and back.  
Polyester padding.  
Showerproof.  
Full length contrast zip.  
Two front zip pockets.  
Elasticated bound armholes and hem.  
Access for decoration.

Size:	XS	S	M
Chest (to fit):	32/34	34/36	38
Size:	L	XL	XXL
Chest (to fit):	40	42	44/46



PA233

**PROACT.**

## PA233 Proact Dual Fabric Sports Jacket

Polyamide ripstop quilted body.  
90% polyester/10% elastane sleeves, sides  
and back. Polyester padding. Showerproof.  
Full length contrast zip. Two front zip pockets.  
Elasticated bound collar, cuffs and hem.  
Access for decoration.



Size:	XS	S	M	L	XL	XXL
Chest (to fit):	32/34	34/36	38	40	42	44/46



LV580

## FINDEN-HALES

### LV580 Finden & Hales Unisex Micro Fleece Jacket

100% polyester.  
Funnel neck collar with bound contrast edge.  
Full length contrast zip with chin guard  
and inner zip guard.  
Contrast shoulder and sleeve panels.  
Contrast right chest zip pocket.  
Seam under chest zip pocket.  
Shaped side panels.  
Two front zip pockets.  
Contrast open bound cuffs and hem.

Weight: 280 gsm

Size:	XS	S	M	L
Chest (to fit):	34/36	36/38	38/40	42
Size:	XL	XXL	3XL	
Chest (to fit):	44/46	48	50/52	



## LV622 Finden & Hales Active Soft Shell Jacket

Two layer soft shell.  
Soft jersey fabric with bonded micro fleece reverse.  
Three panel hood. Contrast shoulders and upper sleeve panels.  
Full length contrast zip with non-slip gripper zip pulls. Contrast right chest and two front  
zip pockets. Top stitched side panels. Stretch bound cuffs and hem. Drop hem.



Size:	XS	S	M	L	XL	XXL
Chest (to fit):	34/36	36/38	38/40	42	44/46	48



LV550

## FINDEN-HALES

### LV550 Finden & Hales Contrast Micro Fleece Jacket

100% polyester micro fleece.  
Pill resistant.  
Unlined.  
Contrast inner collar.  
Full length zip.  
Contrast panels with white piping down sides.  
Piping along raglan seams.  
Two front zip pockets.  
Elasticated cuffs.  
Drawcord hem with toggles.

Weight: 280 gsm

Size:	S	M	L	XL	XXL
Chest (to fit):	36/38	38/40	42	44/46	48



LV551 P504



## FINDEN-HALES



LV624 P671





EA004F

écologie.  
byAWDis



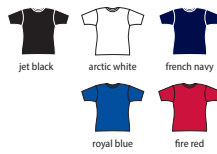
EA004 P467

## EA004F Ecologie Ladies Ambaro Recycled Sports T-Shirt

100% recycled polyester. Textured birdseye knit. Fashion fit. Ribbed collar. Taped neck. Side seams. Twin needle sleeves and hem. Unbranded size label at neckline.

Weight: 140 gsm

Size:	XS	S	M	L	XL
Ladies size:	8	10	12	14	16



## SR280F Spiro Impact Ladies Softex® T-Shirt

85% polyester/15% elastane. Super soft, quick dry breathable high-tech stretch fabric. Carbon brushed for peached softness. Comfort fit. Tag free.

Weight: 160 gsm

Size:	XXS	XS	S	M	L	XL	XXL
Ladies size:	6	8	10	12	14	16	18

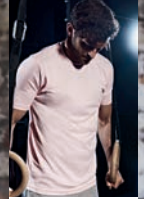


SR280F



JC005

JustCool  
AWDis



JC001 P465



JC001B P660

## JC005 AWDIs Ladies Cool T-Shirt

100% polyester. Neoteric™ textured fabric with inherent wickability. UPF 40+ UV protection. Ladies fit. Self fabric collar. Taped neck. Twin needle curved back hem. Tear out label.

Weight: 140 gsm

Size:	XS	S	M	L	XL	XXL*
Ladies size:	8	10	12	14	16	18

\*Available in XXL.

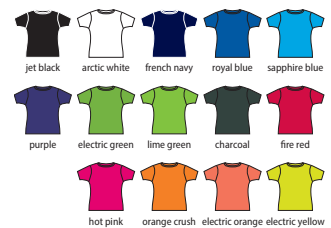


## JC025 AWDIs Ladies Cool Smooth T-Shirt

100% polyester. Neoteric™ smooth fabric with inherent wickability and quick drying properties. UPF 30+ UV protection. Relaxed ladies fit. Self fabric collar. Taped neck. Twin needle stitching. Tear out label.

Weight: 135 gsm

Size:	XS	S	M	L	XL
Ladies size:	8	10	12	14	16



JC025

JustCool  
AWDis



JC020 P467



JC020B P660



# 492 LADIES PERFORMANCE T-SHIRTS

TL527



## TL527 Tombo Scoop Neck T-Shirt

68% polyester/28% viscose/4% polyurethane.  
Super soft fabric. Oversized style. Scoop neckline.  
Dropped shoulder seams. Curved drop hem. Tear out label.

Weight: 160 gsm

Size:	XS	S	M	L	XL	XXL	3XL
Ladies size:	8	10	12	14	16	18	20
Chest (to fit):	30/32	32/34	34/36	36/38	38/40	40/42	42/44



black

Tear Out

TL526



## TL526 Tombo Ladies Over T-Shirt

90% polyester/10% elastane.  
Oversized style. Lightweight. Raglan sleeves.  
Mesh back yoke and sleeve panels.  
Mesh hem with drawcord. Tear out label.

Weight: 150 gsm

Size:	XS	S	M	L	XL	XXL
Ladies size:	8	10	12	14	16	18
Chest (to fit):	30/32	32/34	34/36	36/38	38/40	40/42



black

Tear Out

## SR253F Spiro Ladies Quick Dry Performance T-Shirt

100% textured polyester interlock.  
Quick dry performance fabric. Taped neck. Self fabric collar.  
Flatlock stitched side seams. Twin needle sleeves and hem.  
Printed back neck label. Reflective branding on bottom  
right hem/no branding (some colours in transition).

Weight: 160 gsm

Size:	XS	S	M	L	XL
Ladies size:	8	10	12	14	16



## TL352 Tombo Ladies Seamless Panelled Long Sleeve Crop Top

68% polyamide/26% polyester/6% elastane.\*  
Fitted style. Self fabric collar, cuffs and hem. Raglan sleeves.  
Textured knit on side seam panels. Flatlock stitched seams.

Weight: 280 gsm

Size:	XXS/XS	S/M	L/XL	XXL/3XL
Ladies size:	6/8	10/12	14/16	18/20
Chest (to fit):	28/32	32/36	36/40	40/44



\*Light pink/purple 76% polyamide/19% polyester/5% elastane.

SR253F



SR253M P468



TL352







JC116

**JustCool**  
AWDis



NEW

## JC116 AWDIs Ladies Cool Cross Back Long Sleeve T-Shirt

60% cotton/40% polyester.  
UrbanCool™ lightweight fabric. UPF 40+ UV protection.  
Unique cross back style. Cropped length. Self fabric cuffs and hem with dropped curve at front. Flatlock stitching. Tear out label.

Weight: 160 gsm

Size:	XS	S	M	L	XL
Ladies size:	8	10	12	14	16



NO APPROVER  
VEGAN

Sedex

Tear Out



## JC039 AWDIs Ladies Cool Long Sleeve Crop Top

92% polyester/8% elastane.  
DynamicCool™ responsive blended fabric.  
Raglan sleeves with thumbholes on cuffs.  
Taped neck. Printable elasticated band.

Weight: 210 gsm

Size:	XXS*	XS	S	M	L	XL
Ladies size:	6	8	10	12	14	16



NO APPROVER  
VEGAN



\*Available in XXS.

JC039

**JustCool**  
AWDis



## TL304 Tombo Ladies Seamless Fade Out Long Sleeve Top

60% nylon/32% polyester/8% elastane.  
Fitted style with high-stretch fabric.  
Melange fabric with ombre fade out effect.  
Raglan sleeves with flatlock stitching.  
Self fabric bound neck.  
Thumbholes on cuffs.  
Seamless knit.  
Blind stitching at hems.  
Tear out label.

Weight: 265 gsm

Size:	XXS/XS	S/M	L/XL
Ladies size:	6/8	10/12	14/16
Chest (to fit):	28/32	32/36	36/40



Tear Out

TL304



**JustCool**  
AWDis

## JC012 AWDIs Ladies Cool Long Sleeve T-Shirt

100% polyester.  
Neoteric™ textured fabric with inherent wickability. UPF 40+ UV protection.  
Relaxed ladies fit. Self fabric collar.  
Taped neck.  
Twin needle stitching.  
Tear out label.

Weight: 140 gsm

Size:	XS	S	M	L	XL
Ladies size:	8	10	12	14	16



Tear Out

NO APPROVER  
VEGAN

Sedex



JC012



JC002 P481



## SR254F Spiro Ladies Performance Long Sleeve T-Shirt

100% textured polyester interlock.  
Quick dry performance fabric.  
Self fabric bound collar.  
Taped neck.  
Twin needle sleeves and hem.  
Printed back neck label.  
Branding on right hem.

Weight: 160 gsm

Size:	XS	S	M	L	XL
Ladies size:	8	10	12	14	16



SR254F



SR254M P481



# 494 LADIES PERFORMANCE POLOS

JC045

**JustCool**  
AWDis



JC040 P473



JC040B P650



## JC045 AWDIs Ladies Cool Polo Shirt

100% polyester.  
Neoteric™ textured fabric with inherent wickability.  
UPF 40+ UV protection.  
Ladies fit.  
Self fabric collar.  
Taped neck.  
Three self colour button placket.  
Twin needle stitching.  
Tear out label.

Weight: 140 gsm

Size:	XS	S	M	L	XL	XXL*
Ladies size:	8	10	12	14	16	18

\*Available in XXL.



NO APPROVED  
VEGAN

Tear  
Out

Sedex

neoteric  
PERFORMANCE

H476

**HENBURY**



H475 P475



## H476 Henbury Ladies Coolplus® Wicking Piqué Polo Shirt

100% polyester micro piqué.  
Coolplus® performance permanent wicking fabric draws moisture away from skin to keep you cool and dry. Easy care fabric. Flat knit collar. Taped neck. Locker patch. Two self colour button placket. Cuffed sleeves. Shaped side seams. Side vents. Twin needle stitching. 60°C wash.

Weight: 180 gsm

Size:	XS	S	M	L
Ladies size:	8	10	12	14
Chest (to fit):	30/32	32/34	34/36	36/38
Size:	XL	XXL	3XL	
Ladies size:	16	18	20	
Chest (to fit):	38/40	40/42	42/44	



Coolplus®

EASY CARE

## SR177F Spiro Ladies Team Spirit Polo Shirt

100% textured polyester.  
Cool-Dry® waffle knit mesh panels.  
Fabric is moisture wicking and quick drying.  
Three self colour button placket.  
Contrast panel to raglan seams.  
Printed design feature on sides.  
Drop hem. Twin needle stitching.  
Branding on bottom right hem.

Weight: 145 gsm

Size:	XS	S	M	L	XL
Ladies size:	8	10	12	14	16



COOL-DRY®

SR177F

**SPIRO**



SR177M P477





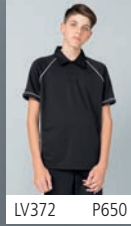


LV371

FINDEN+HALES



LV370 P476



LV372 P650

## LV371 Finden & Hales Ladies Performance Piped Polo Shirt

100% polyester Coolplus® piqué.  
Coolplus® modified polyester fibre draws moisture away from skin to keep you cool and dry. Self fabric collar. Two self colour button placket. Contrast piping to raglan sleeves, sides and cuffs. Side vents. Twin needle hem. 60°C wash.

Weight: 200 gsm

Size:	S	M	L	XL	XXL
Ladies size:	10	12	14	16	18
Chest (to fit):	32/34	34/36	36/38	38/40	40/42



Coolplus®

## SR281F Spiro Impact Ladies Softex® Fitness Top

85% polyester/15% elastane.  
Super soft, quick dry breathable high-tech stretch fabric. Carbon brushed for peached softness. Comfort fit. Racer back style. Tag free.

Weight: 160 gsm

Size:	XXS	XS	S	M	L	XL	XXL
Ladies size:	6	8	10	12	14	16	18

QUICKDRI  
TREATMENT

**SPIRO**  
FITNESS  
HI-TECH  
STRETCH  
EXCEPTIONAL ELASTICITY

No Label

**SOFTEX®**  
CARBON BRUSHED  
SUPER SOFT QUICK DRI FABRIC



SR281F

**SPIRO**



JC015

JustCool  
AWDis



JC007 P478



JC007B P659

## JC015 AWDIs Ladies Cool Vest

100% polyester.  
Neoteric™ textured fabric with inherent wickability. UPF 40+ UV protection. Ladies fit. Racer back style. Self fabric bound neckline and armholes. Twin needle hem. Tear out label.

Weight: 140 gsm

Size:	XS	S	M	L	XL
Ladies size:	8	10	12	14	16



## JC026 AWDIs Ladies Cool Smooth Sports Vest

100% polyester.  
Neoteric™ smooth fabric with inherent wickability. UPF 30+ UV protection. Oversized fit. Scoop neckline. Taped neck. Drop armholes. Racer back style. Tear out label.

Weight: 135 gsm

Size:	XS	S	M	L	XL
Ladies size:	8	10	12	14	16

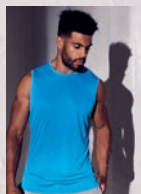


AN APPROVED  
VEGAN



JC026

JustCool  
AWDis



JC022 P478



# 496 LADIES PERFORMANCE VESTS

SR285F

**SPIRO**



## SR285F Spiro Impact Ladies Softex® Tank Top

85% polyester/15% elastane.  
Super soft, quick dry, breathable high-tech stretch fabric.  
Carbon brushed for peached softness.  
Loose fit. Racer back style. Tag free.

Weight: 160 gsm

Size:	S	M	L
Ladies size:	10	12	14

QUICKDRI  
TREATMENT

**SPIRO**  
FITNESS

**HI-TECH**  
STRETCH

EXCEPTIONAL ELASTICITY  
**SOFTEX**  
CARBON BRUSHED  
SUPER SOFT QUICK DRI FABRIC

**X**  
No Label



TL506



**TOMBO**



TL504 Online



## TL506 Tombo Ladies Racer Back Vest

90% polyester/10% elastane.  
Slim fit. Lightweight. Racer back style.  
Self fabric bound neckline and armholes.  
Twin needle hem. Flatlock stitching. Tear out label.

Weight: 150 gsm

Size:	XS	S	M	L	XL
Ladies size:	8	10	12	14	16
Chest (to fit):	30/32	32/34	34/36	36/38	38/40



**Tear Out**

## SK241 SF Ladies Fashion Workout Vest

90% polyester/10% elastane.  
Single jersey. Scoop neckline. Strappy back.  
Dropped armholes and hem. Flatlock stitching.  
Tear out label.

Weight: 150 gsm

Size:	XS	S	M	L	XL	XXL
Ladies size:	8	10	12	14	16	18
Chest (to fit):	30/32	32/34	34/36	36/38	38/40	40/42



**Tear Out**

## TL507 Tombo Ladies Open Back Vest

65% polyester/35% rayon.  
Self fabric bound neckline and armholes. Racer back style.  
Mesh lower back panel with split up the middle.  
Can be worn open or tied up. Twin needle hem. Tear out label.

Weight: 145 gsm

Size:	XS	S	M	L	XL	XXL
Ladies size:	8	10	12	14	16	18
Chest (to fit):	30/32	32/34	34/36	36/38	38/40	40/42



**Tear Out**

SK241



SM241 P659

TL507



**TOMBO**







TL303



### TL303 Tombo Ladies Seamless Strappy Vest

60% nylon/32% polyester/8% elastane.  
Fitted style with high-stretch fabric.  
Melange effect. Seamless knit.  
Self fabric bound neckline and armholes.  
Spaghetti straps with crossover detail at back.  
Blind stitching at hem. Tear out label.

Weight: 265 gsm



Tear Out

Size:	XXS/XS	S/M	L/XL
Ladies size:	6/8	10/12	14/16
Chest (to fit):	28/32	32/36	36/40

## LADIES CONTRAST PERFORMANCE VEST

497



JC027

Just Cool  
AWDIs

### JC027 AWDIs Ladies Cool Smooth Workout Vest

100% polyester.  
Neoteric™ smooth fabric with inherent wickability and quick drying properties.  
UPF 30+ UV protection. Self fabric collar. Taped neck. Racer back style.  
Contrast mesh panel. Longer length. Curved drop hem. Tear out label.

Weight: 135 gsm



Size:	XXS*	XS	S	M	L	XL
Ladies size:	6	8	10	12	14	16

\*Available in XXS.

AN AFFECTION  
VEGAN



Tear Out

Sedex



### PA4009 Proact Ladies Sports Slub Tank Top

65% polyester/35% viscose.  
Loose fit. Scoop self fabric neckline.  
Taped neck.  
Drop twin needle armholes.  
Racer back style.  
Slightly curved hem with overlock stitching.

Weight: 135 gsm



Size:	XS	S	M	L
Ladies size:	8	10	12	14
Chest (to fit):	30	32	34	36



PA4009

PROACT.®

### TL302 Tombo Ladies Seamless Fade Out Vest

60% nylon/32% polyester/8% elastane.  
Fitted style with high-stretch fabric.  
Melange fabric with ombre fade out effect.  
Seamless knit. Racer back style.  
Self fabric bound neckline and armholes.  
Blind stitching at hem. Tear out label.

Weight: 265 gsm



Tear Out

Size:	XXS/XS	S/M	L/XL
Ladies size:	6/8	10/12	14/16
Chest (to fit):	28/32	32/36	36/40



TL302



TL322 P659



# 498 LADIES SPORTS BRAS & CROP TOPS

SK235



## SK235 SF Ladies Workout Crop Top

Black 65% polyamide/31% polyester/4% elastane.  
Neon pink 92% polyamide/8% elastane.  
Double layer interlock.  
Seamless knit.  
Fitted crop top.  
Racer back style.  
Tear out label.

Weight: 280 gsm

Size:	XS	S	M	L
Ladies size:	8	10	12	14
Chest (to fit):	30/32	32/34	34/36	36/38



BL970



## BELLA+CANVAS

### BL970 Bella+Canvas Ladies Sports Bra

90% nylon/10% elastane.  
Double layered for extra support.  
Self fabric bound neckline and armholes.  
Racer back style.  
Elasticated band.

Weight: 255 gsm

Size:	S	M	L
Ladies size:	6/8	10/12	14/16
Chest (to fit):	30/32	32/34	34/36



JC017

JustCool<sup>®</sup>  
AWDis



## JC017 AWDIs Ladies Cool Sports Crop Top

90% nylon/10% elastane.  
Pull on racer back style.  
Self fabric bound scoop neckline and armholes.  
Elasticated band. Twin needle stitching. Tear out label.

Weight: 210 gsm

Size:	XXS*	XS	S	M	L	XL
Ladies size:	6	8	10	12	14	16

\*Available in XXS.



## JC166 AWDIs Ladies Cool Seamless Crop Top

92% nylon/8% elastane.  
UPF 40+ UV protection. Racer back style.  
Self fabric bound scoop neckline and armholes.  
Padded cups. Wide elasticated band.  
Tear out label.

Weight: 300 gsm

Size:	XS	S	M	L	XL
Ladies size:	8	10	12	14	16



SR282F



## SR282F Spiro Impact Ladies Softex Crop Top

88% polyester/12% elastane.  
Super soft, quick dry breathable high-tech stretch fabric. Carbon brushed for peached softness.  
Racer back style. Comfort fit.  
Elasticated band.  
Flatlock stitched seams.  
Tag free.

Weight: 200 gsm

Size:	XXS	XS	S	M	L	XL	XXL
Ladies size:	6	8	10	12	14	16	18



JC166

JustCool<sup>®</sup>  
AWDis







TL351



## TL351 Tombo Ladies Seamless Panelled Crop Top

71% polyamide/22% polyester/7% elastane.\*  
Textured knit on side seam panels. Racer back style with strap detail.  
Bound neckline and armholes. Contrast panels.

Weight: 280 gsm

Size:	XXS/XS	S/M	L/XL	XXL/3XL
Ladies size:	6/8	10/12	14/16	18/20
Chest (to fit):	28/32	32/36	36/40	40/44

\*Light pink/purple 79% polyamide/14% polyester/7% elastane.



## TL371 Tombo Medium Impact Core Bra

86% polyester/14% elastane. Medium support sports bra.  
Round neckline. Cross over elastic adjustable back strap detail.  
Elastic band with bra clasp closure. Permanent cup insert.  
Tear out label.

Weight: 260 gsm

Size:	XXS	XS	S	M	L	XL	XXL
Ladies size:	6	8	10	12	14	16	18
Chest (to fit):	28/30	30/32	32/34	34/36	36/38	38/40	40/42



TL371



NEW

## JustCool<sup>®</sup> AWDIs

### JC019 AWDIs Ladies Cool Cross Back Crop Top

92% polyester/8% elastane.  
DynamicCool™ responsive blended fabric.  
Scoop neckline.  
Double layer front for extra support.  
Cross strap detail at the back.  
Printable elasticated band.

Weight: 210 gsm

Size:	XS	S	M	L	XL
Ladies size:	8	10	12	14	16



AN APPROVED VEGAN



### TL696 Tombo Ladies Seamless Crop Top

60% nylon/32% polyester/8% elastane.\*  
Racer back style.  
Self fabric bound neckline, armholes and back.  
Mesh inserts on front and back.  
Removable padded cups.  
Tear out label.

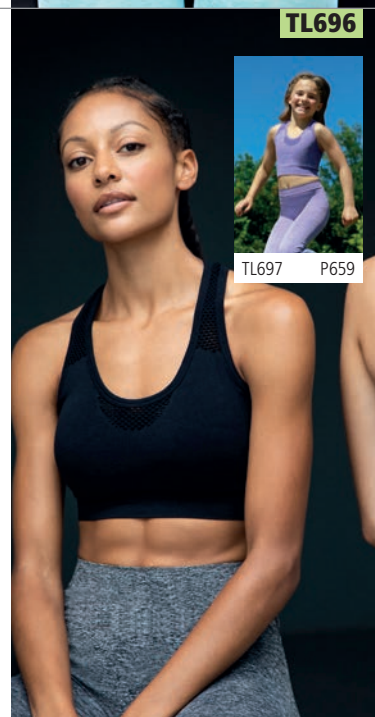
Weight: 265 gsm

Size:	XS	S	M	L
Ladies size:	8	10	12	14
Chest (to fit):	30/32	32/34	34/36	36/38

\*Black 92% nylon/8% elastane.



JC019



TL696



TL697 P659

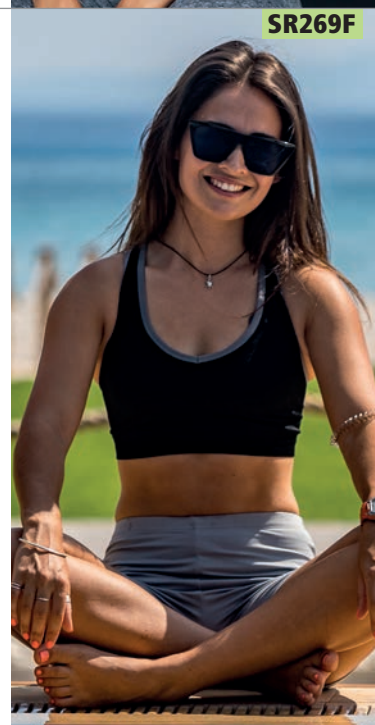


### SR269F Spiro Fitness Compression Sports Bra

52% nylon/40% polyester/8% elastane.  
Breathable moisture wicking fabric. Super soft and quick drying. 360° seamless knit. Next to skin fit. Deep plunge neckline. Racer back style. Tag free.

Weight: 300 gsm

Size:	XS/S	M/L	XL/XXL
Ladies size:	8/10	12/14	16/18



SR269F



# 500 LADIES PERFORMANCE SWEATS & TOPS

JC036

**JustCool**  
AWDis



JC031 P483



**JC036 AWDIs**

**Ladies Cool Half Zip Sweat Top**

87% polyester/13% elastane.  
CoolFit™ matt finish performance fabric with superior wicking properties.  
UPF 40+ UV protection. Ladies fit. Stand up collar. Zip neck with chin guard. Raglan sleeves. Self fabric contrast bound zip, cuffs and hem. Reflective tab on back of neck to help keep ear phones in place. Tear out label.

Weight: 280 gsm

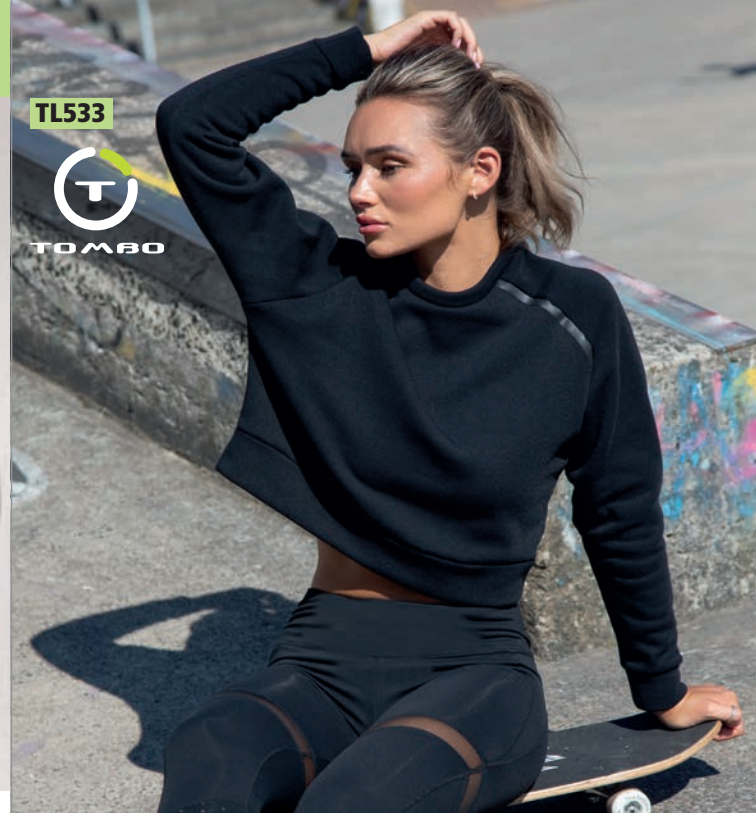


Size:	XS	S	M	L	XL
Ladies size:	8	10	12	14	16



TL533

**TOMBO**



**TL533 Tombo**

**Ladies Cropped Sweatshirt**

100% polyester.  
Brushed back fleece. Cropped boxy fit. Self fabric collar, cuffs and hem. Raglan sleeves with rubber tape insert on front left seam. Tear out label.

Weight: 250 gsm



Size:	XS	S	M	L	XL	XXL
Ladies size:	8	10	12	14	16	18
Chest (to fit):	30/32	32/34	34/36	36/38	38/40	40/42



**TL563 Tombo**

**Ladies Long Sleeve Zip Neck Performance Top**

88% polyester/12% elastane.  
Single jersey with wicking finish. Stand up self fabric collar. Raglan sleeves with flatlock stitching. 1/4 length zip with chin guard and reflective trim. Reflective detail on back of shoulder seams. Side panels. Concealed zip key pocket on left back panel seam, with inner headphone access. Thumbholes and fold over cuffs. Elasticated bound cuffs and hem. Tear out label.

Weight: 190 gsm



Size:	XS	S	M	L	XL	XXL
Ladies size:	8	10	12	14	16	18
Chest (to fit):	30/32	32/34	34/36	36/38	38/40	40/42



**JC035 AWDIs**

**Ladies Cool-Flex™ Half Zip Top**

87% polyester/13% elastane.  
Cool-Flex™ four-way stretch fabric with quick dry, wicking properties. Active fit. Stand up collar. Reflective tab on back neck. Raglan sleeves. Zip neck with chin guard and reflective detail. Side panels. Bound cuffs with thumbholes. Twin needle hem. Tear out label.

Weight: 280 gsm



Size:	XS	S	M	L	XL
Ladies size:	8	10	12	14	16



TL563

**TOMBO**



TL562 P482

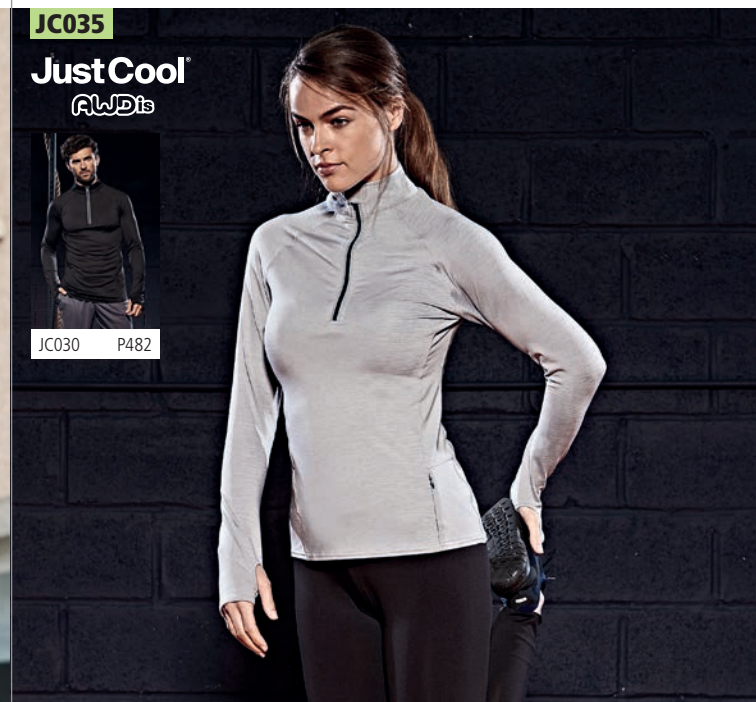


JC035

**JustCool**  
AWDis



JC030 P482







JC052

**JustCool**  
AWDIs

**JC052 AWDIs**  
**Cool Unisex Fitness Hoodie**

60% polyester/35% cotton/5% elastane.  
UrbanCool™ lightweight french terry fabric.  
UPF 40+ UV protection. Four-way stretch. Raglan sleeves. Two panel hood with drawcord.  
Self fabric cuffs and hem. Panel detail on sides and sleeves. Flatlock stitching.  
Tear out label.

Weight: 240 gsm



Size:	S	M	L	XL	XXL
Chest (to fit):	37/39	39/41	41/43	43/45	45/48



JC054

**JustCool**  
AWDIs

**JC054 AWDIs**  
**Ladies Cool Cross Back Cropped Hoodie**

60% polyester/35% cotton/5% elastane.  
UrbanCool™ lightweight french terry fabric. Wicking and quick drying properties. UPF 40+ UV protection. Raglan sleeves. Two panel hood with self colour drawcord.  
Cropped length. Curved front hem. Cross back styling. Self fabric cuffs. Tear out label.

Weight: 240 gsm



Size:	XS	S	M	L	XL
Ladies size:	8	10	12	14	16



**TL305 Tombo**  
**Ladies Seamless Hoodie**

57% nylon/43% polyester.  
Fitted style with high-stretch fabric. Melange effect.  
Seamless knit. Grown on hood with bound edge. Raglan sleeves with flatlock stitching.  
Textured knit detail on sides. Thumbholes on cuffs. Blind stitched cuffs and hem.  
Tear out label.

Weight: 198 gsm



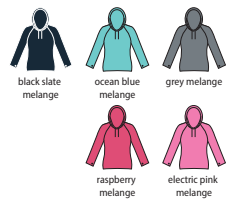
Size:	XXS/XS	S/M	L/XL
Ladies size:	6/8	10/12	14/16
Chest (to fit):	28/32	32/36	36/40



**JC038 AWDIs**  
**Ladies Cool Cowl Neck Top**

92% polyester/8% elastane.  
DynamicCool™ responsive blended fabric. Raglan sleeves.  
Cowl neck style hood with toggles. Reflective elements on hood.  
Reflective tab on back neck for ear phone cords. Thumbholes on cuffs.  
Overlock stitched seams. Twin needle hem. Tear out label.

Weight: 210 gsm



Size:	XS	S	M	L	XL
Ladies size:	8	10	12	14	16



TL305

**TOMBO**



JC038

**JustCool**  
AWDIs



JC037 P484



**JustCool®**  
ALWDIs



JC061  
COOL  
RETRO  
TRACK  
ZOODIE  
P487

JC062  
COOL  
CONTRAST  
WINDSHIELD  
JACKET  
P488

{ PETA - APPROVED  
VEGAN }

**RUN SLEEP REPEAT**





SR277F

**SPIRO**



SR277M P484

## SR277F Spiro Ladies Hooded T-Shirt Jacket

100% polyester.  
Lightweight and quick drying. Breathable. Super stretch fabric with ergonomic seams. Integral hood with contrast drawcord. Contrast full length zip. Two front contrast zip pockets. Open cuffs and hem. Tag free.

Weight: 135 gsm



marl grey/black



No Label



BR

## K916 Gamegear Ladies Contrast Sports Jacket

89% polyester/11% spandex.  
Brushed back fleece. Raglan sleeves. Grown on hood with stretch bound opening. Taped neck. Full length zip with chin guard and inner zip guard. Contrast inserts on underarms and sides. Two front zip pockets. Stretch bound cuffs and hem. Drop hem. Flatlock stitched seams.

Weight: 180 gsm



grey melange/black



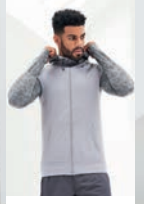
WRAP

Size:	XS	S	M	L	XL	XXL
Ladies size:	8	10	12	14	16	18



JC058

**JustCool**  
AWDIs



JC057 P485

## JC058 AWDIs Ladies Cool Contrast Zoodie

Body 89% polyester/11% elastane.  
Hood and sleeves 92% polyester/8% elastane. DynamicCool™ responsive blended fabric. Contrast melange effect grown on adjustable hood and raglan sleeves. Taped neck. Full length zip. Front pouch pockets. Thumbholes on cuffs. Tear out label.

Weight: Body 240 gsm, Hood and sleeves 210 gsm



black/black slate melange ocean blue melange grey melange



Tear Out



Dynamic Cool BODY RESPONSE

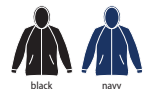
{ VEGAN }

Size:	XS	S	M	L	XL
Ladies size:	8	10	12	14	16

## TL551 Tombo Ladies Lightweight Running Hoodie

100% polyester french terry.  
Slim fit. Funnel neck hood with toggles. Full length zip with chin guard and inner zip guard. Raglan sleeves with reflective tape. Two front zip pockets. Inner media pocket. Thumbholes on cuffs. Self fabric bound hem. Flatlock stitching.

Weight: 180 gsm

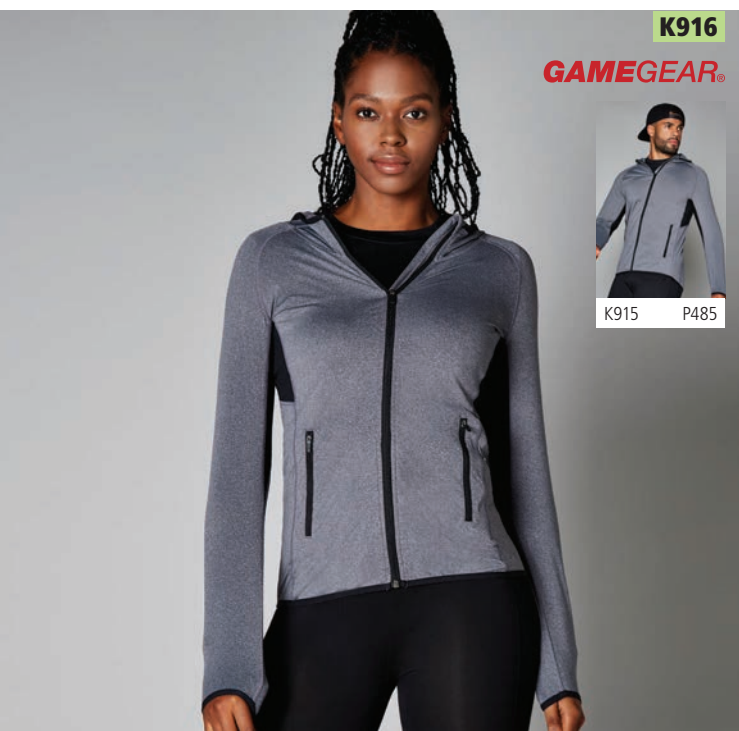


black navy



purple marl grey marl

Size:	XS	S	M	L	XL	XXL
Ladies size:	8	10	12	14	16	18
Chest (to fit):	30/32	32/34	34/36	36/38	38/40	40/42

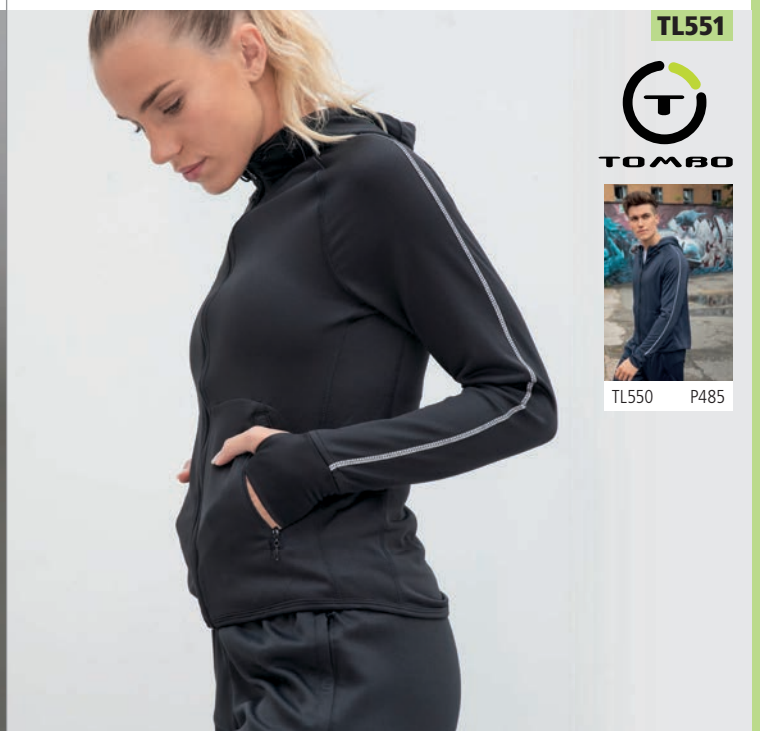


K916

**GAMEGEAR**

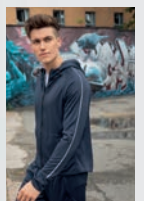


K915 P485



TL551

**TOMBO**



TL550 P485



# 504 LADIES PERFORMANCE JACKETS

PA366

PROACT.®



PA365 P487



## PA366 Proact Ladies Heather Hooded Jacket

100% polyester.  
Jersey lined hood with contrast drawcord. Full length contrast low profile zip.  
Right chest contrast zip pocket. Two front contrast zip pockets.  
Panels with topstitch finish. Stretch contrast bound cuffs and hem.

Weight: 345 gsm

Size:	S	M	L	XL
Ladies size:	10	12	14	16
Chest (to fit):	32	34	36	38



LV551

FINDEN +HALES



LV550 P490

## LV551 Finden & Hales Ladies Contrast Micro Fleece Jacket

100% polyester micro fleece.  
Pill resistant. Unlined. Fitted style. Contrast inner collar.  
Taped neck. Piping along raglan seams. Contrast panels with white piping down sides.  
Full length zip. Two front zip pockets. Elasticated cuffs. Drawcord hem with toggles.

Weight: 280 gsm

Size:	S	M	L	XL	XXL
Ladies size:	10	12	14	16	18
Chest (to fit):	32/34	34/36	36/38	38/40	40/42



## PA359 Proact Ladies Performance Hooded Jacket

79% polyester/15% viscose/6% elastane.  
Jersey lined hood. Two tone contrast drawcord with plastic tips. Raglan sleeves.  
Collar high full length low profile zip. Two front zip pockets with fused seams.  
Contrast elasticated cuffs. Contrast stretch bound hem.

Weight: 310 gsm

Size:	S	M	L	XL
Ladies size:	10	12	14	16
Chest (to fit):	32	34	36	38



## SR245F Spiro Ladies Micro Fleece Hoodie

100% polyester.  
Lightweight and quick drying. Breathable. Super stretch fabric with ergonomic seams. Shaped fit. Double thickness integral hood. Raglan sleeves. Full length contrast zip with chin guard. Two front pockets. Contrast soft bound hood, cuffs, pockets and hem.  
Topstitch detail. Tag free.

Weight: 180 gsm

Size:	XS	S	M	L	XL	XXL
Ladies size:	8	10	12	14	16	18



PA359

PROACT.®



PA358 P487



SR245F

SPIRO



SR245M P485







JC065

**JustCool**  
AWDis

## JC065 AWDIs Ladies Cool Cropped Windshield Jacket

100% polyester.  
CoolShield™ coated fabric is showerproof and windproof.  
Lightweight. Cropped length. Adjustable hood. Reflective detail on centre front and hood. Full length zip with reflective piping. Two front zip pockets. Elasticated cuffs. Adjustable drawcord hem.



Size:	XS	S	M	L	XL
Ladies size:	8	10	12	14	16



## SR268F Spiro Ladies Zero Gravity Jacket

Nylon body with 92% polyester/8% elastane hood and sleeves. Polyester faux down padding. Nylon lining. Showerproof and breathable. Quick dry. Ladies fit. Virtually weightless, ideal layer garment. Integral hood. Super stretch hood and sleeves. Quilted body panels. Full length zip. Articulated sleeves. Invisible front zip pockets. Bound hood, cuffs and hem. Thumbholes on cuffs. Reflective detail. Tag free.



Size:	XXS	XS	S	M	L	XL	XXL
Ladies size:	6	8	10	12	14	16	18



SR268F

**SPIRO**



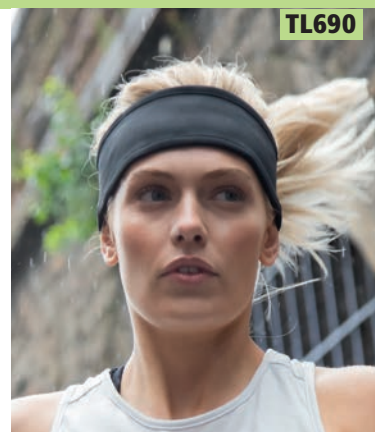
SR268M P489



## TL690 Tombo Running Headband

100% polyester french terry. Lightweight stretch fabric. Tapered design for comfort.

Size: One



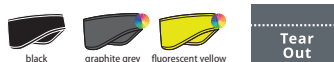
TL690

**Beechfield**  
ORIGINAL HEADWEAR

## BB316 Beechfield Sports Tech Soft Shell Headband

85% polyester/15% elastane.  
Windproof and breathable. Lightweight and quick drying. Ergonomic fit with contoured design. Flat seams. Tear out label.

Size: One size



BB316

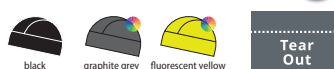
NEW COLOURS

**Beechfield**  
ORIGINAL HEADWEAR

## BB315 Beechfield Sports Tech Soft Shell Beanie

85% polyester/15% elastane.  
Windproof and breathable. Lightweight and quick drying. Ergonomic fit. Ponytail opening. Reflective detail. Flatlock stitching. Tear out label.

Size: One size



BB315

NEW COLOURS

**Beechfield**  
ORIGINAL HEADWEAR

## BB320 Beechfield Sports Tech Soft Shell Neck Warmer

85% polyester/15% elastane. Windproof and breathable. Lightweight and quick drying. Ergonomic fit with contoured design. Adjustable drawcord with toggle. Flatlock stitched seams. Tear out label. Also available in kids BB320B, p778.

Size: One size



BB320

NEW COLOURS

**ki.mood**  
www.kimood.net

## KI0341 Kimood Smartphone Belt

90% polyamide/10% thermoplastic polyurethane TPU. Water repellent fabric. Elasticated strap with two zip pockets. Main pocket has a transparent PVC window and is suitable for media devices. Coin/key pocket. Ear phone access.

Dimensions: 37 x 7 x 5 cm  
Print area: 4 x 3 cm



KI0341



# FINDEN +HALES

Back on track.

PERFORMANCE



## COORDINATED TEAMWEAR COLLECTION

**LV381** Unisex Contrast Panel Piqué Polo Shirt P181 **LV371** Ladies Performance Piped Polo Shirt P177 **LV895** Ladies Contrast Team Leggings P516  
**LV871** Knitted Tracksuit Top P507 **LV881** Knitted Tracksuit Pants P507 **LV370** Performance Piped Polo Shirt P476 **LV820** Track Pants P507  
**LV873** Kids Knitted Tracksuit Top P664 **LV883** Kids Knitted Tracksuit Pants P664 **LV372** Kids Performance Piped Polo Shirt P661 **LV834** Girls Skort P662



LV871

FINDEN +HALES



LV873 P664

## LV871 Finden & Hales Knitted Tracksuit Top

100% polyester interlock. Funnel neck. Full length contrast zip. Contrast outer sleeve panels. Two front zip pockets. Semi-automatic lock zip sliders on all zips. 1x1 ribbed cuffs. Open hem.

Weight: 250 gsm

Size:	XXS	XS	S	M
Chest (to fit):	32/34	34/36	36/38	38/40
Size:	L	XL	XXL	3XL
Chest (to fit):	42	44/46	48	50/52

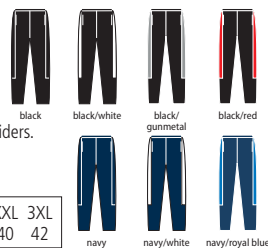


## LV881 Finden & Hales Knitted Tracksuit Pants

100% polyester interlock. Slim leg. Elasticated waistband with inner drawcord. Two side zip pockets. Contrast side panels. Ankle zips with zip guard and semi-automatic lock zip sliders.

Weight: 250 gsm

Size:	XXS	XS	S	M	L	XL	XXL	3XL
Waist (to fit):	28	30	32	34	36	38	40	42



LV883 P664

FINDEN +HALES

LV881

FINDEN +HALES

## LV820 Finden & Hales Track Pants

100% polyester microfibre twill with peach finish. Elasticated waistband with inner drawcord. Two side zip pockets. Mesh lining with polyester lower leg lining. Side ankle zips. Open hem leg ends with drawcord and toggle.

Weight: 130 gsm

Size:	S	M	L	XL	XXL	3XL
Waist (to fit):	32	34	36	38	40	42



LV820

FINDEN +HALES

## LV830 Finden & Hales Microfibre Shorts

100% polyester microfibre twill with peach finish. Mesh lined. Elasticated waistband with inner drawcord. Two side zip pockets.

Weight: 130 gsm

Size:	S	M	L	XL	XXL
Waist (to fit):	32	34	36	38	40



LV830



LV832 Online

LV831 P507

FINDEN +HALES

## LV831 Finden & Hales Ladies Microfibre Shorts

100% polyester microfibre twill with peach finish. Elasticated waistband with inner drawcord. Two side zip pockets.

Weight: 130 gsm

Size:	S	M	L	XL	XXL
Ladies size:	10	12	14	16	18
Waist (to fit):	28	30	32	34	36



LV831



LV832 Online

LV830 P507



# 508 PERFORMANCE PANTS

JC083



**JustCool®**  
AWDis

## JC083 AWDIs Cool Sports Leggings

88% polyester/12% elastane.  
UPF 30+ UV protection.  
Four-way stretch.  
Elasticated waistband.  
Flatlock stitching.  
Tear out label.

Weight: 180 gsm

Size:	S	M	L	XL	XXL
Waist (to fit):	30	32	34	36	38

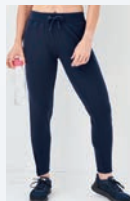


jet black



JC082

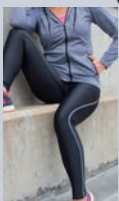
**JustCool®**  
AWDis



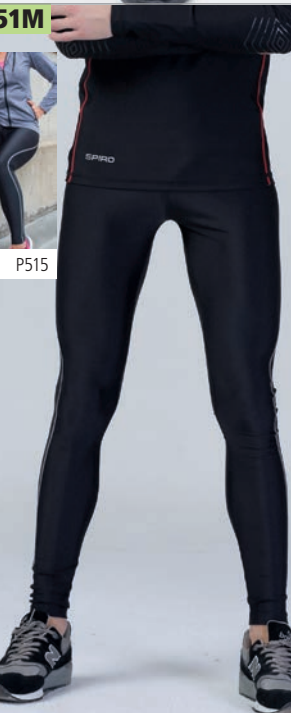
JC084 P518



SR251M



SR251F P515



**SPIRO**

## SR251M Spiro Bodyfit Base Layer Leggings

80% polyamide/20% spandex.  
Quick dry treated performance fabric.  
Lightweight and breathable.  
Elasticated waistband and drawcord.  
Contour fit panels with grey flatlock stitching.  
Key pocket.  
Reflective branding on left hip and right back ankle.

Weight: 200 gsm

Size:	XS/S	M/L	XL/XXL
Waist (to fit):	28/30	32/34	36/38



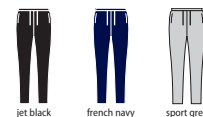
black

## JC082 AWDIs Cool Tapered Jog Pants

60% polyester/35% cotton/5% elastane.  
UrbanCool™ lightweight french terry fabric.  
UPF 40+ UV protection. Four-way stretch. Tapered fit.  
Elasticated waistband with self colour drawcord.  
Two side zip pockets. Two rear patch pockets. Ankle zips. Tear out label.

Weight: 240 gsm

Size:	S	M	L	XL	XXL
Waist (to fit):	30	32	34	36	38



## TL580 Tombo Slim Leg Training Pants

100% polyester interlock piqué.  
Slim fit. Elasticated waistband with inner drawcord.  
Two side pockets. Lower leg zips.  
Tear out label.

Weight: 220 gsm

Size:	XS	S	M	L	XL	XXL
Waist (to fit):	30	32	34	36	38	40



SR276M



**SPIRO**

## SR276M Spiro Slim Fit Joggers

100% polyester.  
Breathable.  
Quick drying.  
Super stretch fabric with ergonomic seams.  
Flat waistband with inner drawcord.  
Contrast grey internal trim.  
Mesh lined side zip pockets including key/pass pocket.  
YKK ankle snap zips.  
Tag free.

Weight: 220 gsm

Size:	XS	S	M
Waist (to fit):	28/30	30/32	32/34
Size:	L	XL	XXL
Waist (to fit):	34/36	38/40	40/42



black



TL580



TL581 P518



TL582 P664







TL680



**TOMBO**

## TL680 Tombo Tech Slim Leg Joggers

100% polyester.  
Brushed back fleece.  
Elasticated waistband with flat drawcord.  
Two side pockets with rubber tabs, top and bottom. Rubber tape detail on side seams from hip to knee. Knee panel on reverse with darts on front. Curved back yoke.  
Self fabric cuffed leg ends.  
Tear out label.

Weight: 250 gsm

Size:	XS	S	M	L	XL	XXL
Waist (to fit):	30	32	34	36	38	40



black

Tear Out

**JustCool®**  
AWDis

## JC081 AWDIs Cool Track Pants

100% polyester.  
Polyester lining with polyester taffeta lower leg lining.  
Elasticated waistband with inner drawcord.  
Two side zip pockets.  
Knee high side leg zips.  
Open hem leg ends with adjustable self fabric tab.  
Tear out label.

Weight: 125 gsm

Size:	S	M	L	XL	XXL
Waist (to fit):	30	32	34	36	38



jet black



french navy

AN APPROVED  
VEGAN

**Sedex**



Tear Out



JC081



K971

**GAMEGEAR®**

## K971 Gamegear Slim Fit Track Pants

100% polyester interlock.  
Modern fashion fit with tapered leg.  
Elasticated waistband with inner drawcord.  
Self fabric panels on outside leg.  
Two side zip pockets.  
Concealed zips to lower legs.

Weight: 210 gsm

Size:	XS	S	M
Waist (to fit):	26/28	29/31	32/34
Size:	L	XL	XXL
Waist (to fit):	35/36	37/38	39/40



black



navy

**GAMEGEAR®**

## K987 Gamegear Cooltex® Track Pants

100% polyester micro touch outer.  
Polyester lining.  
Moisture wicking fabric allows you to stay cool, dry and comfortable.  
Elasticated waistband with inner drawcord.  
Two side zip pockets.  
Open hem leg ends with side leg zips.

Size:	XXS	XS	S	M
Waist (to fit):	23/25	26/28	29/31	32/34
Size:	L	XL	XXL	
Waist (to fit):	35/36	37/38	39/40	



black



navy

**COOLTEX®**



K987



PA1008

**PROACT.®**

## PA1008 Proact Performance Trousers

79% polyester/15% viscose/6% elastane.  
Slim fit.  
Elasticated waistband with two tone drawcord and plastic tips.  
Two side jersey lined pockets.  
Rear zip pocket.  
Knee patches.  
Elasticated leg ends.

Weight: 310 gsm

Size:	S	M	L	XL	XXL	3XL
Waist (to fit):	30	32	34	36	38	40



deep grey heather

PA1009 P518



**canterbury**

## CN252 Canterbury Stretch Tapered Pants

100% polyester interlock.  
Vapodri wicking technology.  
Breathable and quick drying.  
Elasticated waistband with inner drawcord.  
Two side zip pockets.  
Covered ankle zips.  
Branding on right thigh.

Size:	S	M	L
Waist (to fit):	30/32	32/34	34/36
Size:	XL	XXL	3XL
Waist (to fit):	36/38	38/40	40/42



black



navy

**VAPODRI**



CN252



# 510 PERFORMANCE PANTS

**K985**



**GAMEGEAR®**

## K985 Gamegear Track Pants

Polyester microfibre outer with peached finish.  
Polyester mesh upper leg lining.  
Polyester lower leg lining.  
Elasticated waistband with inner drawcord.  
Two side zip pockets.  
Contrast piping down outside legs.  
Open hem leg ends with side leg zips.

<b>Size:</b>	XS	S	M
<b>Waist (to fit):</b>	26/28	29/31	32/34
<b>Size:</b>	L	XL	XXL
<b>Waist (to fit):</b>	35/36	37/38	39/40



black white piping navy white piping

**TL47**



TL47B P664



## TL47 Tombo Cuffed Track Pants

100% polyester microfibre with peached finish.  
Mesh lining with polyester satin lower leg lining.  
Showerproof and windproof.  
Elasticated waistband with inner drawcord.  
Two side pockets, right with zip.  
Rear pocket with tear release closure.  
Elasticated leg ends with ankle zips.

Weight: 115 gsm

<b>Size:</b>	XS	S	M	L	XL	XXL
<b>Waist (to fit):</b>	30	32	34	36	38	40



black navy dark green

**TL470**



## TL470 Tombo Piped Track Pants

100% polyester microfibre.  
Elasticated waistband with inner drawcord.  
Two side pockets, right with zip. Inner key pocket.  
Piping trim. Mesh lining with polyester lower leg lining.  
Elasticated leg ends with ankle zips.  
Unbranded, size tab only in waist.  
Zip access for decoration.

Weight: 115 gsm

<b>Size:</b>	S	M	L	XL	XXL	3XL
<b>Waist (to fit):</b>	32	34	36	38	40	42
<b>Leg length (reg):</b>	30	31	31.5	32	32.5	32.5
<b>Leg length (long):</b>	32	33	34	34.5	34.5	34.5



black white piping navy white piping

**X**  
No Label

**CN250**



CN250F P518



CN250B P668



## CN250 Canterbury Open Hem Stadium Pants

100% polyester.  
Polyester/cotton 3/4 lining with nylon lower leg lining.  
Elasticated waistband with inner drawcord.  
Two side zip pockets.  
Full length leg side zips.  
Open hem style with adjuster tabs on leg ends.  
Branding on right thigh.

<b>Size:</b>	XS	S	M	L	XL	XXL	3XL
<b>Waist (to fit):</b>	28/30	30/32	32/34	34/36	36/38	38/40	40/42



black navy

## CN251 Canterbury Cuffed Stadium Pants

100% polyester.  
Polyester/cotton 3/4 lining with nylon lower leg lining.  
Elasticated waistband with inner drawcord.  
Two side zip pockets.  
Full length leg side zips.  
Elasticated cuffed leg ends.  
Branding on right thigh.

<b>Size:</b>	XS	S	M	L	XL	XXL	3XL
<b>Waist (to fit):</b>	28/30	30/32	32/34	34/36	36/38	38/40	40/42



black navy

**CN251**



CN251B P668







TL800



**TOMBO**

## TL800 Tombo Active Track Shorts

100% polyester microfibre.  
Mesh lined inner shorts.  
Elasticated waistband with inner drawcord.  
Inner key pocket.  
Two side pockets.  
Unbranded, size tab only in waist.

Weight: 115 gsm

Size:	S	M	L	XL	XXL	3XL
Waist (to fit):	32	34	36	38	40	42



black



navy



No Label

TL809B P665



TL80



**TOMBO**

## TL80 Tombo All Purpose Mesh Lined Shorts

100% polyester microfibre with peached finish.  
Mesh lined.  
Elasticated waistband with inner drawcord.  
Two side pockets.  
Key cord.  
Rear pocket with tear release closure.  
Twin needle panel seams.  
Twin needle hems.

Weight: 115 gsm

Size:	S	M	L	XL	XXL
Waist (to fit):	32	34	36	38	40



black



white



navy



red

TL80F P519



K986

**GAMEGEAR®**

## K986 Gamegear Cooltex® Mesh Lined Training Shorts

100% polyester micro touch outer.  
Polyester mesh lining.  
Moisture wicking fabric allows you to stay cool, dry and comfortable.  
Elasticated waistband with drawcord.  
Two side pockets.  
Side vents.

Size:	XXS	XS	S	M
Waist (to fit):	23/25	26/28	29/31	32/34
Size:	L	XL	XXL	
Waist (to fit):	35/36	37/38	39/40	



black



navy

**COOLTEX®**

**JustCool®**  
AWDIs

## JC080 AWDIs Cool Mesh Lined Shorts

100% polyester.  
Neoteric™ textured fabric with inherent wickability. UPF 40+ UV protection.  
Micro mesh lining. Elasticated waistband with drawcord. Inner key pocket. Two side pockets.  
Tear out label (some colours in transition).

Weight: 140 gsm

Size:	S	M	L	XL	XXL
Waist (to fit):	30	32	34	36	38



jet black



arctic white



french navy



royal blue



charcoal



fire red



AN APPROVED VEGAN



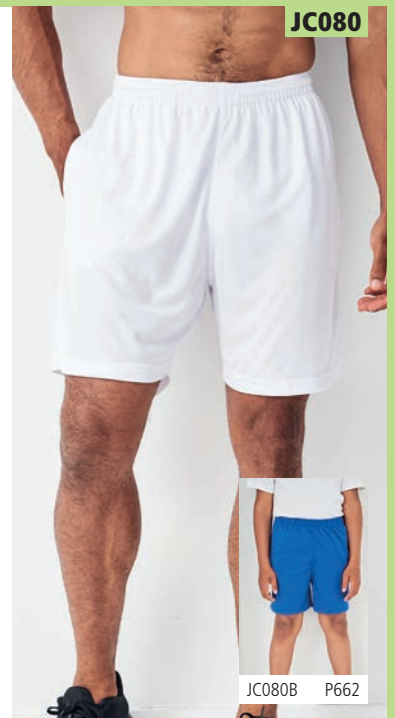
neoteric PERFORMANCE



Tear Out



WRAP



JC080

JC080B P662



**TOMBO**

## TL81 Tombo Sports Shorts

100% polyester microfibre.  
Peached finish.  
Inner mesh lining.  
Elasticated waistband with inner drawcord.  
Mesh panelling on side, back and inside legs.  
Side seam pockets.

Weight: 115 gsm

Size:	S	M	L	XL	XXL
Waist (to fit):	32	34	36	38	40



black



navy



TL81

**FINDEN+HALES**

## LV817 Finden & Hales Pro Stretch Sport Shorts

96% polyester/4% elastane.  
Unlined.  
Elasticated waistband with inner drawcord.  
Two side zip pockets.  
Centre rear zip pocket with mesh pocket bag.

Weight: 120 gsm

Size:	S	M	L	XL	XXL
Waist (to fit):	32	34	36	38	40



black



navy



LV817



# 512 PERFORMANCE SHORTS

K980



**GAMEGEAR®**

## K980 Gamegear Track Shorts

Polyester microfibre outer with peached finish. Polyester mesh lining. Elasticated waistband with inner drawcord. Two side zip pockets. Contrast piping down outside legs. Side vents.

Weight: 115 gsm

Size:	XS	S	M
Waist (to fit):	26/28	29/31	32/34
Size:	L	XL	XXL
Waist (to fit):	35/36	37/38	39/40



black  
white piping



navy  
white piping



red  
white piping

K924



**GAMEGEAR®**

## K924 Gamegear Cooltex® Mesh Lined Active Shorts

100% polyester micro touch outer. Polyester inner mesh basket liner. Moisture wicking fabric allows you to stay cool, dry and comfortable. Elasticated waistband with inner drawcord. Contrast piping and binding down side seams. Rear zip pocket. Side vents.

Weight: 80 gsm

Size:	S	M	L
Waist (to fit):	29/31	32/34	35/36
Size:	XL	XXL	
Waist (to fit):	37/38	39/40	



black  
white piping



navy  
white piping

**COOLTEX®**

JC072



**JustCool®**  
AWDiS

## JC072 AWDiS Cool Jog Shorts

60% polyester/35% cotton/5% elastane. UrbanCool™ lightweight french terry fabric. Four-way stretch. Relaxed fit. Elasticated waistband with drawcord. Two side pockets. Twin needle hems.

Weight: 240 gsm

Size:	S	M	L	XL	XXL
Waist (to fit):	30	32	34	36	38



jet black



sport grey



**SPIRO®**

## SR279M Spiro Basketball Shorts

100% polyester. Lightweight and breathable. Quick dry treated fabric. Loose fit. Elasticated waistband with inner drawcord. Long leg style. Contrast stripe at side legs. Tag free.

Weight: 145 gsm

Size:	XS	S	M	L
Waist (to fit):	28	30	32	34
Size:	XL	XXL	3XL	4XL
Waist (to fit):	36	38	40	42



black/white



white/black



royal blue/white



red/white

**No Label**

SR279M



TL600



**TOMBO**

## TL600 Tombo Combat Shorts

100% polyester french terry. High elasticated waistband with inner drawcord. Two side pockets. Flat area at front of waistband for decoration. Tear out label.

Weight: 180 gsm

Size:	XS	S	M	L	XL	XXL
Waist (to fit):	30	32	34	36	38	40



black



grey marl

**Tear Out**

**SPIRO®**

## SR183M Spiro Micro-Lite Running Shorts

100% polyester. 50D microfibre. Showerproof and breathable. Quick drying. Elasticated waistband with inner drawcord. Breathable ventilation panels. Reflective branding on left leg.

Size:	XXS	XS	S	M	L	XL	XXL
Waist (to fit):	28	30	32	34	36	38	40



black/grey



black/red



white/red



navy/white



grey/aqua



grey/lime green

SR183M







JC089

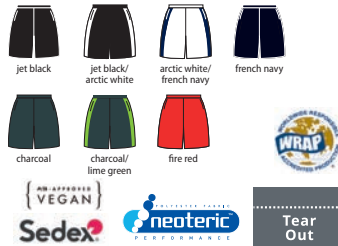
**JustCool®**  
AWDis

## JC089 AWDIs Cool Panel Shorts

100% polyester.  
Neoteric™ textured fabric with inherent wickability. UPF 40+ UV protection. Mesh lining. Elasticated waistband with drawcord. Inner key pocket. Two side pockets. Side vents. Tear out label.

Weight: 140 gsm

Size:	S	M	L	XL	XXL
Waist (to fit):	30	32	34	36	38



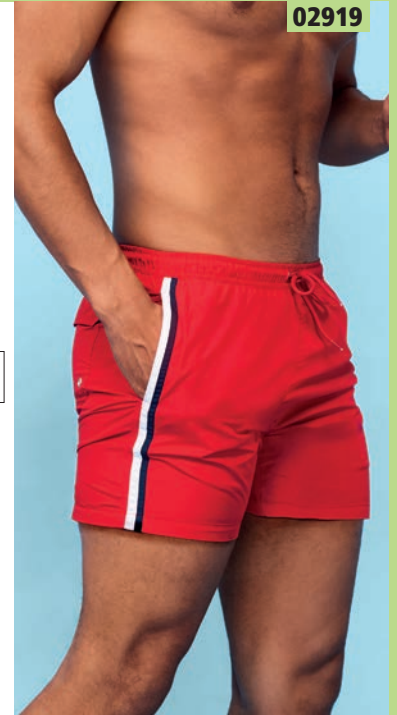
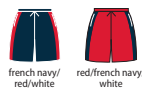
**SOL'S®**  
the fair spirit

## 02919 SOL'S Sunrise Contrast Swimming Shorts

100% polyester pongee.  
Elasticated waistband with drawcord.  
Inner mesh lined briefs.  
Two side pockets.  
Rear pocket.  
Tear out label.

Weight: 70 gsm

Size:	XS	S	M	L	XL	XXL	3XL
Waist (to fit):	28	30	32	34	36	38	40



02919



LV885

## FINDEN +HALES

### LV885 Finden & Hales Knitted Shorts

100% polyester.  
Elasticated waistband with inner drawcord.  
Contrast side panels (except solid black or navy).

Weight: 250 gsm

Size:	XS	S	M	L	XL	XXL	3XL
Waist (to fit):	30	32	34	36	38	40	42



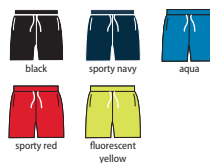
## PROACT.®

### PA169 Proact Swimming Shorts

100% polyester.  
Soft peached finish.  
Quick drying.  
Elasticated waistband with contrast drawcord.  
Integrated mesh briefs.  
Rear tear release patch pocket.

Weight: 110 gsm

Size:	S	M	L	XL	XXL
Waist (to fit):	30	32	34	36	38



PA169



FR602

**FRONT ROW & CO**  
HERITAGE CLOTHING

## FR602 Front Row Board Shorts

100% polyester microfibre.  
Mesh lined.  
Elasticated waistband.  
Contrast drawcord with eyelets.  
Inner key pocket.  
Two side pockets.  
Rear patch pocket with metal eyelet.  
Navy/vintage red has contrast panels.  
Tag free.

Weight: 120 gsm

Size:	XS	S	M	L	XL	XXL
Waist (to fit):	30	32	34	36	38	40



## PROACT.®

### PA168 Proact Swimming Shorts

100% polyamide.  
Lightweight and quick drying.  
Elasticated waistband with contrast drawcord.  
Inner mesh lined briefs.  
Two side pockets.  
Rear pocket with tear release flap.

Weight: 105 gsm

Size:	S	M	L	XL	XXL
Waist (to fit):	30	32	34	36	38



PA168



# 514 LADIES PERFORMANCE PANTS

K943



**GAMEGEAR®**

## K943 Gamegear Ladies Leggings

Black 92% polyester/8% spandex.  
Grey melange 89% polyester/11% spandex.  
Wide double layer waistband with concealed zip pocket.  
Flatlock stitched self fabric panels.

Weight: Black 240 gsm, Grey melange 180 gsm

Ladies size:	6	8	10	12	14	16
Waist (to fit):	21	23	25	27	29	31



PA188



**PROACT.®**

## PA188 Proact Ladies Leggings

95% cotton/5% elastane.  
Jersey fabric.  
Elasticated waistband.  
Twin needle stitching.

Weight: 190 gsm

Size:	XS	S	M	L	XL
Ladies size:	8	10	12	14	16



JC070

**JustCool®**  
AWDis

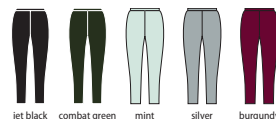


## JC070 AWDIs Ladies Cool Workout Leggings

86% polyester/14% elastane.  
Cool-Flex™ stretch fabric with quick dry, wicking properties. Smooth finish.  
Elasticated smooth waistband.  
Flatlock stitching.

Weight: 280 gsm

Size:	XS	S	M	L	XL
Ladies size:	8	10	12	14	16



AN APPROVED  
VEGAN

**Sedex®**



## TL671 Tombo Ladies Active Leggings

88% polyester/12% elastane.  
Coolpass wicking fabric. Shaped to fit.  
Elasticated waistband with inner drawcord.  
Mesh panels. Tear out label.

Weight: 170 gsm

Size:	XS	S	M	L	XL
Ladies size:	8	10	12	14	16
Waist (to fit):	26	28	30	32	34



**CoolPass**

SR171F



**SPIRO.**

## SR171F Spiro Ladies Sprint Pants

92% polyester/8% elastane.  
Z-TECH® stretch fabric.  
Lightweight, quick drying fabric.  
Elasticated waistband with inner drawcord.  
Reflective branding on left thigh and rear pocket.  
Zip opening to lower leg with grip strip.  
Rear zip pocket.

Weight: 248 gsm

Size:	S	M	L	XL
Ladies size:	10	12	14	16



**Z-TECH**  
STRETCH

TL671



SR171M Online



# LADIES PERFORMANCE PANTS 515



JC167

**JustCool**  
AWDis

## JC167 AWDIs Ladies Cool Seamless Leggings

92% nylon/8% elastane.  
UPF 40+ UV protection. Fitted stretch fabric.  
High waisted with wide waistband.  
Seamless design. Tear out label.

Weight: 300 gsm

Size:	XS	S	M	L	XL
Ladies size:	8	10	12	14	16



JC087

**JustCool**  
AWDis



JC087B P663



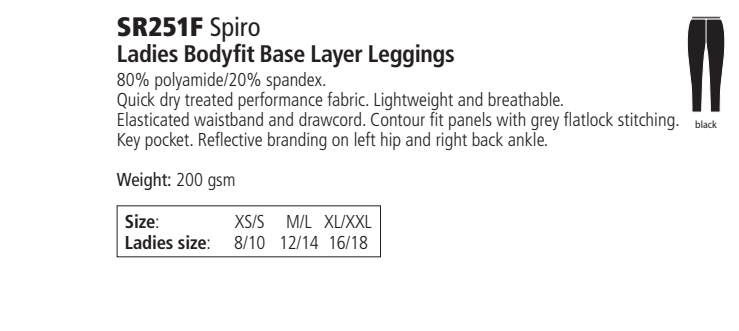
## JC087 AWDIs Ladies Cool Athletic Pants

87% polyester/13% elastane.  
CoolFit™ matt finish performance fabric with superior wicking properties.  
UPF 40+ UV protection. Elasticated smooth waistband. Hidden key pocket in the front. Contrast flatlock topstitching on contrast colours. Tear out label.

Weight: 280 gsm

Size:	XS	S	M	L	XL	XXL*	3XL*
Ladies size:	8	10	12	14	16	18	20

\*Available in XXL and 3XL.



SR251F

**SPIRO**



SR251M P508

## SR251F Spiro Ladies Bodyfit Base Layer Leggings

80% polyamide/20% spandex.  
Quick dry treated performance fabric. Lightweight and breathable.  
Elasticated waistband and drawcord. Contour fit panels with grey flatlock stitching.  
Key pocket. Reflective branding on left hip and right back ankle.

Weight: 200 gsm

Size:	XS/S	M/L	XL/XXL
Ladies size:	8/10	12/14	16/18



## TL370 Tombo Ladies Core Pocket Leggings

86% polyester/14% elastane.  
Squat-proof. High waisted with deep waistband.  
Media pocket on left side panel.  
Tear out label.

Weight: 260 gsm

Size:	XXS/XS	S/M	L/XL	XXL/3XL
Ladies size:	6/8	10/12	14/16	18/20
Waist (to fit):	24/26	28/30	32/34	36/38



TL370

**TOMBO**





# 516 LADIES PERFORMANCE PANTS

JC078



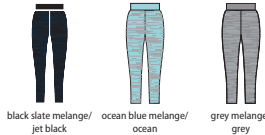
**JustCool®**  
AWDis

## JC078 AWDIs Ladies Cool Dynamic Leggings

92% polyester/8% elastane.  
DynamicCool™ responsive blended fabric.  
Printable elasticated waistband.  
Two thigh pockets.  
Contrast panels.  
Flatlock stitching.

Weight: 210 gsm

Size:	XS	S	M	L	XL
Ladies size:	8	10	12	14	16



TL300



TL320 P663



## TL300 Tombo Ladies Seamless Fade Out Leggings

60% nylon/32% polyester/8% elastane.  
Fitted high stretch leggings.  
Melange fabric with ombre fade out effect.  
Grown on elasticated waistband.  
Seamless knit.  
Blind stitch at hems.  
Tear out label.

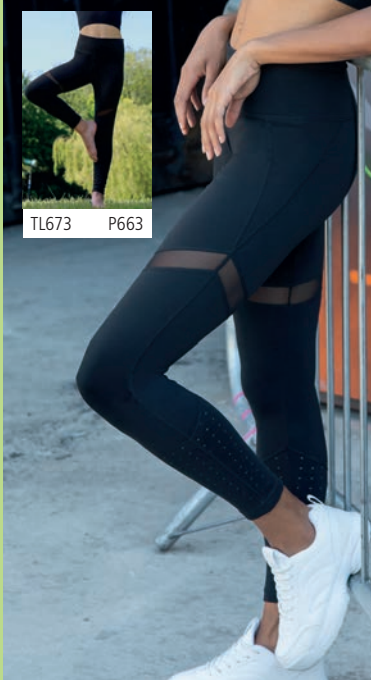
Weight: 265 gsm

Size:	XXS/XS	S/M	L/XL
Ladies size:	6/8	10/12	14/16
Waist (to fit):	24/26	28/30	32/34



Tear Out

TL672



TL673 P663



## TL672 Tombo Ladies Panelled Leggings

87% polyester/13% elastane.  
Opaque stretch fabric.  
Squat-proof.  
Deep elasticated waistband with inner pocket.  
Mesh panels on thighs, front and back.  
Laser cut panels on lower legs.  
Tear out label.

Weight: 280 gsm

Size:	XS	S	M	L	XL	XXL
Ladies size:	8	10	12	14	16	18
Waist (to fit):	26	28	30	32	34	36



Tear Out

LV895

FINDEN+HALES



## LV895 Finden & Hales Ladies Contrast Team Leggings

88% polyester/12% elastane.  
Contrast stripe down outside legs.  
Knitted mesh panel on back of knee. Squat-proof.  
Twin needle cover stitch at hem.

Weight: 280 gsm

Size:	XS	S	M	L	XL	XXL
Ladies size:	8	10	12	14	16	18
Waist (to fit):	26	28	30	32	34	36



## TL350 Tombo Ladies Seamless Panelled Leggings

63% polyamide/32% polyester/5% elastane.\*  
Deep high waistband. Contrast panels. Squat-proof.  
Blind stitched hem.

Weight: 280 gsm

Size:	XXS/XS	S/M	L/XL	XXL/3XL
Ladies size:	6/8	10/12	14/16	18/20
Waist (to fit):	24/26	28/30	32/34	36/38



\*Light pink/purple 78% polyamide/17% polyester/5% elastane.



TL350







JC077

**JustCool®**  
AWDis

## JC077 AWDIs Ladies Cool Printed Leggings

86% polyester/14% elastane.  
Cool-Flex™ stretch fabric with quick dry, wicking properties. Elasticated smooth waistband. Flat seams. Flatlock stitching. Tear out label.

Weight: 280 gsm

Size:	XS	S	M	L	XL
Ladies size:	8	10	12	14	16

AN APPROVED  
VEGAN



Tear Out



**JustCool®**  
AWDis

## JC086 AWDIs Ladies Cool Capris

87% polyester/13% elastane.  
CoolFit™ matt finish performance fabric with superior wicking properties. UPF 40+ UV protection. Slimline 3/4 length. Elasticated smooth waistband. Hidden inner key pocket. Contrast flatlock topstitching on contrast colours. Tear out label.

Weight: 280 gsm

Size:	XS	S	M	L	XL
Ladies size:	8	10	12	14	16



Tear Out



JC086

JC086B P663

## SK424 SF Ladies Reversible Workout Leggings

89% polyester/11% elastane.  
Bonded interlock. Reversible style - fashion print on one side, solid colour on reverse. Non-transparent. Hidden pocket on inner waistband. Flatlock stitched seams. Tear out label.

Weight: 270 gsm

Size:	XS	S	M	L	XL
Ladies size:	8	10	12	14	16
Waist (to fit):	26	28	30	32	34

Sedex

Tear Out



## SR284F Spiro Impact Ladies Softex® Capri Pants

88% polyester/12% elastane.  
Super soft, quick dry breathable high-tech stretch fabric. Carbon brushed for peached softness. Elasticated waistband. Cropped style. Tag free.

Weight: 200 gsm

Size:	XXS	XS	S	M	L	XL	XXL
Ladies size:	6	8	10	12	14	16	18



HI TECH  
STRETCH  
EXCEPTIONAL ELASTICITY

**SPIRO**  
FITNESS

No Label

QUICKDRI  
TREATMENT  
**SOFTEX**  
CARBON BRUSHED  
SUPER SOFT QUICK DRI FABRIC



SR284F



SK424



## TL306 Tombo Ladies Seamless Cropped Leggings

60% nylon/32% polyester/8% elastane.  
Melange effect fabric. Grown on waistband. Blind stitch at waistband and hem. Squat-proof. 3/4 length.

Weight: 265 gsm

Size:	XXS/XS	S/M	L/XL
Ladies size:	6/8	10/12	14/16
Waist (to fit):	24/26	28/30	32/34



TL306



# 518 LADIES PERFORMANCE PANTS

TL581



## TL581 Tombo Ladies Slim Leg Training Pants

100% polyester piqué.  
Slim fit.  
Elasticated waistband with inner drawcord.  
Two side zip pockets.  
Ankle zips.  
Tear out label.

Weight: 200 gsm

Size:	XS	S	M	L	XL
Ladies size:	8	10	12	14	16
Waist (to fit):	26	28	30	32	34



black

Tear Out

TL580 P508

TL582 P664

PA1009

PROACT.®

## PA1009 Proact Ladies Performance Trousers

79% polyester/15% viscose/6% elastane.  
Slim fit.  
Elasticated waistband with two tone drawcord and plastic tips.  
Two side jersey lined pockets.  
Rear zip pocket.  
Elasticated leg ends.

Weight: 310 gsm

Size:	S	M	L	XL
Ladies size:	10	12	14	16



deep grey heather

PA1008 P509

JC084

JustCool®  
AWDis



JC082 P508

## JC084 AWDIs Ladies Cool Tapered Jog Pants

60% polyester/35% cotton/5% elastane.  
UrbanCool™ lightweight french terry fabric.  
UPF 40+ UV protection. Tapered fit.  
Elasticated waistband with self colour drawcord.  
Two side zip pockets. Rear patch pockets. Side ankle zips. Tear out label.

Weight: 240 gsm

Size:	XS	S	M	L	XL
Ladies size:	8	10	12	14	16



jet black french navy sport grey



## LV833 Finden & Hales Ladies Skort

100% polyester skirt. 88% polyester/12% elastane pants.  
Quick dry performance Coolpass base layer permanent wicking fabric. Lightweight and breathable. Integral sports pants with reversed seams for extra comfort. Inner key pocket. Hem vents.

Weight: Outer 140 gsm, Inner 170 gsm

Size:	XS	S	M	L	XL
Ladies size:	8	10	12	14	16
Waist (to fit):	26	28	30	32	34



black navy red

CoolPass

CN250F



## CN250F Canterbury Ladies Open Hem Stadium Pants

100% polyester.  
Polyester/cotton 3/4 lining with nylon lower leg lining.  
Elasticated waistband with inner drawcord.  
Two side zip pockets.  
Full length leg side zips.  
Open hem style with adjuster tabs on leg ends.  
Branding on right thigh.

Ladies size:	8	10	12	14	16	18
Waist (to fit):	24	26	28	30	32	34



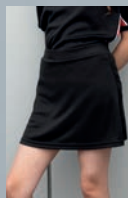
black navy

CN250 P510

CN250B P668

LV833

FINDEN+HALES



LV834 P662







JC074

**JustCool®**  
AWDIs

### JC074 AWDIs Ladies Cool Jog Shorts

60% polyester/35% cotton/5% elastane.  
UrbanCool™ lightweight french terry fabric.  
UPF 40+ UV protection.  
Relaxed fit.  
Elasticated waistband with drawcord.  
Two side pockets.  
Curved hem.

Weight: 240 gsm

Size:	XS	S	M	L	XL
Ladies size:	8	10	12	14	16



jet black



**JustCool®**  
AWDIs

### JC088 AWDIs Ladies Cool Training Shorts

87% polyester/13% elastane.  
CoolFit™ matt finish performance fabric  
with superior wicking properties.  
UPF 40+ UV protection.  
Smooth elasticated waistband.  
Hidden inner key pocket.  
Flatlock stitching.  
Tear out label.

Weight: 280 gsm

Size:	XS	S	M	L	XL
Ladies size:	8	10	12	14	16



jet black



JC088



TL80F



### TL80F Tombo Ladies All Purpose Shorts

100% polyester with microfibre peached finish.  
Elasticated waistband with inner drawcord.  
Two side pockets.  
Rear pocket with tear release closure and key cord.  
Twin needle panel seams.

Weight: 115 gsm

Size:	S	M	L	XL
Ladies size:	10	12	14	16
Waist (to fit):	28	30	32	34



black



navy



red



TL80

P511



### SR283F Spiro Impact Ladies Softex® Shorts

88% polyester/12% elastane.  
Super soft, quick dry breathable high-tech stretch fabric. Carbon brushed for peached softness.  
Elasticised waistband.  
Tag free.

Weight: 200 gsm

Size:	XXS	XS	S	M
Ladies size:	6	8	10	12
Size:	L	XL	XXL	
Ladies size:	14	16	18	



black



grape



cloudy grey

**HI-TECH STRETCH**  
EXCEPTIONAL ELASTICITY



No Label

**SPIRO FITNESS**

**SOFTEX** CARBON BRUSHED  
SUPER SOFT QUICK DRI FABRIC

**QUICKDRI**  
TREATMENT



SR283F



SR261F



### SR261F Spiro Ladies Skort

100% polyester skirt.  
95% cotton/5% elastane pants.  
Quick drying, lightweight and breathable.  
Integral sport pants.  
Flatlock stitched side seams.  
Flat elasticated waistband.  
Contrast fit panels.  
Hem vent.  
Branding on right hem.

Weight: 210 gsm

Size:	S	M	L	XL	XXL
Ladies size:	10	12	14	16	18



black



white



navy



SR261B

P663



### TL301 Tombo Ladies Seamless Shorts

60% nylon/32% polyester/8% elastane.  
Fitted style with high-stretch fabric.  
Melange effect.  
Seamless knit.  
High waisted with grown on elasticated waistband.  
Blind stitched hems.  
Tear out label.

Weight: 265 gsm

Size:	XXS/XS	S/M	L/XL
Ladies size:	6/8	10/12	14/16
Waist (to fit):	24/26	28/30	32/34



purple marl



dark grey marl



Tear Out



TL301



# SOL'S®

the fair spirit

**TWIN**

11939 **SOL'S Sporty  
Performance T-Shirt**  
P466

01159 **SOL'S Ladies Sporty  
Performance T-Shirt**  
Online

**Great quality,  
great price**

 Sustainable  
Apparel Coalition

**FAIR  
WEAR**





SR187M



SR187F Online

### SR187M Spiro Bikewear Padded Shorts

80% polyamide/20% spandex.  
Cool-Dry® performance fabric. Lightweight and breathable.  
Anti-bacterial double layer, smooth textured fabric pad with high density silicone inserts.  
Anatomically shaped. Elasticated hem. Key pocket. Leg grip. Reflective branding on left leg.

Weight: 200 gsm



black



COOL-DRY

Size:	S	M	L	XL	XXL
Waist (to fit):	32	34	36	38	40

### SR188M Spiro Bikewear Top

100% polyester.  
Cool-Dry® textured performance fabric. Lightweight and quick drying. Full length zip. Three pockets on back, middle is a zip key pocket. Reflective piping to front. Bound cuffs. Breathable contrast contour fit panels. Elasticated hem with grip strip. Printed back neck label. Reflective branding on front and back.

Weight: 170 gsm



black/white



white/black



aqua/black



fluoro green/black



COOL-DRY

Size:	S	M	L	XL	XXL
Chest (to fit):	37	40	43	46	49

### SR259M Spiro Bikewear Crosslite Gilet

100% nylon.  
Windproof and breathable. 90% polyester/10% elastane mesh back panel.  
Stand up collar. Full length zip. Reflective print to front and back. Longer back panel.

Size:	XS	S	M	L	XL	XXL
Chest (to fit):	33	38	41	44	47	50



neon lime



### SR185M Spiro Bikewear Crosslite Trail and Track Jacket

100% polyester pongee 300T with PU coating.  
Waterproof fabric 5000mm. Breathable and windproof. Back vent. Full length zip with chin guard and inner zip guard. Two front zip pockets with storm flaps and black trim. Adjustable cuffs. Reflective piping. Cycle pouch. Adjustable cycle tail. Folds away into belt pocket.

Size:	S	M	L	XL	XXL
Chest (to fit):	38	41	44	47	50



neon lime



SR259M



SR185M





01638

**SOL'S**  
the fair spirit



01639 P666



## 01638 SOL'S Maracana 2 Contrast T-Shirt

100% polyester.  
Self fabric collar with contrast piping.  
Raglan sleeves.  
Contrast mesh inserts on sides and sleeves.  
Longer back panel.  
Twin needle stitching.  
Suitable for sublimation printing.

Weight: 140 gsm

Size:	S	M	L	XL	XXL
Chest (to fit):	36/38	38/40	41/42	43/44	45/47



01717

**SOL'S**  
the fair spirit



01719 P666

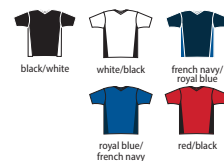


## 01717 SOL'S Classico Contrast T-Shirt

100% polyester.  
Breathable polyester mesh. V neck with contrast trim.  
Forward shoulder seams. Contrast mesh side panels.  
Twin needle stitching.

Weight: 150 gsm

Size:	XS	S	M	L	XL	XXL
Chest (to fit):	35/36	36/38	38/40	41/42	43/44	45/47



## 90208 SOL'S Azteca Goalkeeper Shirt

100% polyester interlock.  
Self fabric collar with contrast piping. Raglan sleeves.  
Contrast mesh inserts on sides and sleeves. Padded elbows and lower sleeves.  
Longer back panel. Ribbed cuffs. Printed neck label. Logo on right shoulder and sleeves/no logo (some colours in transition). Suitable for sublimation printing.

Weight: 140 gsm

Size:	S	M	L/XL	XXL
Chest (to fit):	36/38	38/40	41/44	45/47



90208

**SOL'S**  
the fair spirit



90209 P666





01718

SOL'S  
the fair spirit

01720 P666

**01718 SOL'S  
Olimpico Shorts**

100% polyester.  
Breathable polyester mesh.  
Elasticated waistband with contrast drawcord.  
Contrast mesh side panels.  
Twin needle stitching.

Weight: 150 gsm



<b>Size:</b>	XS	S	M	L	XL	XXL
<b>Waist (to fit):</b>	28	30	32	34	36	38

01221

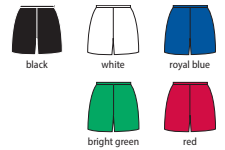
SOL'S  
the fair spirit

01222 P666

**01221 SOL'S  
San Siro 2 Shorts**

100% polyester.  
Elasticated waistband with inner drawcord. Reinforced seams.  
Suitable for sublimation printing.

Weight: 140 gsm



<b>Size:</b>	S	M	L	XL	XXL
<b>Waist (to fit):</b>	30	32	34	36	38

**10604 SOL'S  
Soccer Socks**

80% polyester/15% cotton/5% spandex.  
Knee length with ribbed opening.  
Branding on top of foot.



<b>Size:</b>	XS/S	S/M	M/L
<b>Childrens size (fits):</b>	12 - 2.5	3.5 - 6	
<b>Adult size (fits):</b>			6.5 - 10

10604

SOL'S  
the fair spirit**90210 SOL'S  
Anfield Bib**

100% polyester mesh.  
Self fabric bound neckline and armholes.  
Twin needle hem.

Weight: 80 gsm



<b>Size:</b>	XS	M	XL
--------------	----	---	----

90210

SOL'S  
the fair spirit



CN310



## CN310 Canterbury Professional Shorts

100% polyester twill.  
Elasticated waistband with drawcord.  
Sewn in front crease.  
Reinforced stitching.  
Two side pockets reinforced with double bar tacks.  
Branding on right hem.

Weight: 230 gsm

Size:	S	M	L
Waist (to fit):	30/32	32/34	34/36
Size:	XL	XXL	3XL
Waist (to fit):	36/38	38/40	40/42



black white navy

CN311



## CN311 Canterbury Advantage Shorts

100% polyester twill.  
Grip waistband with inner drawcord.  
Inner gum shield pocket.  
Nylon elastane gusset.  
Side panels.  
Branding on right leg.

Weight: 230 gsm

Size:	XS	S	M	L
Waist (to fit):	28/30	30/32	32/34	34/36
Size:	XL	XXL	3XL	
Waist (to fit):	36/38	38/40	40/42	



black white navy

CN71



black white navy red

## CN71 Canterbury Playing Socks

100% polyamide.  
Knee high with rib opening.  
Hard wearing with a comfortable cushioned foot.  
Branding on back of leg.

Size:	S	M	L	XL
Size (fits):	2-5	6-10	11-13	14-16

CN74



black/white black/red navy/white

## CN74 Canterbury Playing Cap Socks

100% polyamide.  
Knee high with rib opening.  
Contrast turnover.  
Hard wearing with a comfortable cushioned foot.  
Branding on back of leg.

Size:	XS	S	M	L	XL
Size (fits):	11-1	2-5	6-10	11-13	14-16

CN302



CN302B P667

## CN302 Canterbury Evader Jersey

100% polyester.  
Vapodri wicking technology. Pro athletic fit.  
Contrast loop elasticated collar. Contrast shoulders, sleeves and lower body inserts. Branding on right chest and left hem.

Weight: 250 gsm

Size:	S	M	L	XL	XXL
Chest (to fit):	37/39	39/41	41/43	43/45	46/48



black navy sky blue maroon

VAPODRI

## CN303 Canterbury Evader Hooped Jersey

100% polyester.  
Vapodri wicking technology.  
Pro athletic fit. Sublimated hoop detail on front.  
Solid colour shoulders, sleeves, back and lower body inserts.  
Branding on right chest and left hem.

Weight: 250 gsm

Size:	S	M	L	XL	XXL
Chest (to fit):	37/39	39/41	41/43	43/45	46/48



black/white navy/white red/white

VAPODRI

CN303



CN303B P667





CN270



### CN270 Canterbury Club Training Jersey

100% polyester interlock.  
Vapodri wicking technology. Pro athletic fit.  
Loop zero neckline construction. Inset raglan seams. Dropped back hem.  
Branding on right chest and lower left hem.

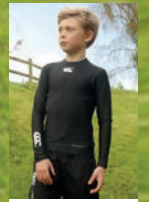
Weight: 250 gsm



VAPODRI

Size:	XS	S	M	L	XL	XXL	3XL
Chest (to fit):	33	36	40	43	46	49	52

CN360



CN360B P667

### CN360 Canterbury ThermoReg Long Sleeve Base Layer

95% polyester/5% spandex.  
ThermoReg moisture wicking fabric keeps you cool, dry and comfortable.  
Designed to be worn next to the skin. Self fabric collar. Forward shoulder seams.  
Underarm ventilation gusset. Offset side seams. Performance seams. Twin needle sleeves and hem.  
Branding on centre chest and right arm.

Weight: 220 gsm



THERMOREG

Size:	XS	S	M	L	XL	XXL
Chest (to fit):	34/36	37/39	39/41	41/43	43/45	46/48



# New Club Range in 2021

Evader Jersey CN302 P524



CN260



CN260F P526

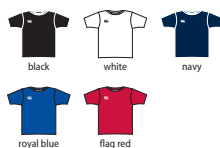


## CN260 Canterbury Club Dry T-Shirt

100% polyester.  
Vapodri wicking technology.  
Shaped collar with white insert - white has black insert. Mesh back panel.  
Forward shoulder seams.  
Offset side seams.  
Branding on right chest and lower left hem.

Weight: 150 gsm

Size:	S	M	L
Chest (to fit):	36	40	43
Size:	XL	XXL	3XL
Chest (to fit):	46	49	52



VAPODRI

NEW

CN260F



## CN260F Canterbury Ladies Club Dry T-Shirt

100% polyester.  
Vapodri wicking technology.  
Shaped collar with white insert.  
Mesh back panel.  
Forward shoulder seams.  
Offset side seams.  
Branding on right chest and lower left hem.

Weight: 150 gsm

Ladies size:	8	10	12	14	16	18
Chest (to fit):	32	34	36	38	40	42



VAPODRI



CN260 P526

NEW

CN263



CN263F P526

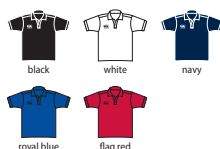


## CN263 Canterbury Club Dry Polo Shirt

100% polyester.  
Vapodri wicking technology. Ribbed collar.  
Two self colour button placket.  
Mesh back panel.  
Forward shoulder seams.  
Offset side seams.  
Branding on right chest and lower left hem.

Weight: 150 gsm

Size:	S	M	L
Chest (to fit):	36	40	43
Size:	XL	XXL	3XL
Chest (to fit):	46	49	52



VAPODRI

NEW



## CN263F Canterbury Ladies Club Dry Polo Shirt

100% polyester.  
Vapodri wicking technology.  
Ribbed collar.  
Two self colour button placket.  
Mesh back panel.  
Forward shoulder seams.  
Offset side seams.  
Branding on right chest and lower left hem.

Weight: 150 gsm

Ladies size:	8	10	12	14	16	18
Chest (to fit):	32	34	36	38	40	42



VAPODRI

CN263F



CN263 P526

NEW

CN261



## CN261 Canterbury Club Dry Singlet

100% polyester.  
Vapodri wicking technology.  
Mesh back panel.  
Bound neckline and armholes.  
Forward shoulder seams.  
Offset side seams.  
Branding on right chest and lower left hem.

Weight: 150 gsm

Size:	S	M	L
Chest (to fit):	36	40	43
Size:	XL	XXL	3XL
Chest (to fit):	46	49	52



VAPODRI

NEW



## CN264 Canterbury Club Shorts

100% polyester.  
Vapodri wicking technology.  
Elasticated waistband with inner drawcord.  
Two side pockets with bartack reinforcement.  
Mesh side panels.  
Branding on right hem.

Weight: 110 gsm

Size:	S	M	L
Waist (to fit):	30/32	32/34	34/36
Size:	XL	XXL	3XL
Waist (to fit):	36/38	38/40	40/42



VAPODRI

CN264



NEW



CN271



### CN271 Canterbury Club Stadium Jacket

Micro-diamond ripstop polyester.  
Polyester taffeta lining.  
Vaposhield shower resistant finish.  
Concealed hood.  
Full length zip with chin guard and inner zip guard.  
Forward facing shoulder seams.  
Two front zip pockets.  
Elasticated cuffs.  
Drawcord hem.  
Branding on right chest and lower left hem.

Size:	XS	S	M	L
Chest (to fit):	33	36	40	43
Size:	XL	XXL	3XL	
Chest (to fit):	46	49	52	



VAPOSHIELD



NEW



CN267

### CN267 Canterbury Club Zip Neck Mid Layer Training Top

100% polyester.  
Matt finish outer.  
Zip neck with chin guard.  
Forward shoulder seams.  
Offset side seams.  
Folded elasticated cuffs and hem.  
Branding on right chest.

Weight: 250 gsm

Size:	S	M	L	XL	XXL	3XL
Chest (to fit):	36	40	43	46	49	52



NEW

CN266



### CN266 Canterbury Club Track Jacket

100% polyester.  
Lightweight mesh lining.  
Vaposhield shower resistant finish.  
Full length zip with chin guard and inner zip guard.  
Forward shoulder seams.  
Two front zip pockets.  
Elasticated cuffs.  
Branding on right chest.

Size:	S	M	L	XL	XXL	3XL
Chest (to fit):	36	40	43	46	49	52



VAPOSHIELD

NEW



CN268

### CN268 Canterbury Club Rain Jacket

Micro-diamond ripstop polyester.  
Lightweight mesh lining.  
Vaposhield shower resistant finish.  
Concealed hood.  
Full length zip with chin guard and inner zip guard.  
Forward facing shoulder seams.  
Two front zip pockets.  
Elasticated cuffs.  
Drawcord hem.  
Branding on right chest and lower left hem.

Size:	XS	S	M	L
Chest (to fit):	33	36	40	43
Size:	XL	XXL	3XL	
Chest (to fit):	46	49	52	



VAPOSHIELD



NEW

CN265



### CN265 Canterbury Club Track Pants

100% polyester.  
Lightweight mesh lining.  
Tapered fit.  
Elasticated waistband with inner drawcord.  
Two zip pockets.  
Open hem with calf length zip.  
Branding on right thigh.

Weight: 110 gsm

Size:	S	M	L
Waist (to fit):	30/32	32/34	34/36
Size:	XL	XXL	3XL
Waist (to fit):	36/38	38/40	40/42



NEW



CN217

### CN217 Canterbury Club Contact Top

Micro-diamond ripstop polyester.  
Lightweight mesh lining.  
Vaposhield shower resistant finish.  
Stretch ribbed collar with V detail.  
Forward facing shoulder seams.  
Offset side seams.  
Elasticated cuffs.  
Folded elasticated hem.  
Branding on right chest and lower left hem.

Size:	XS	S	M	L
Chest (to fit):	33	36	40	43
Size:	XL	XXL	3XL	
Chest (to fit):	46	49	52	



VAPOSHIELD



NEW



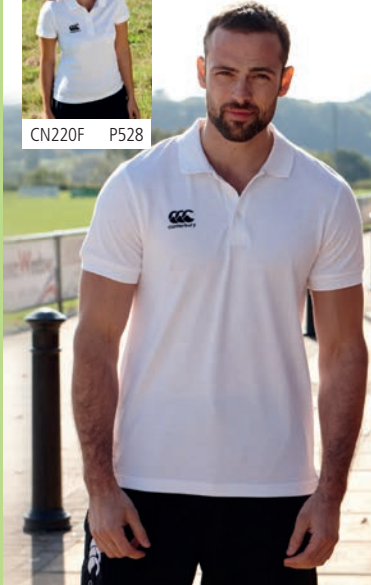
CN217B P667



**CN220**



CN220F P528



## CN220 Canterbury Waimak Piqué Polo Shirt

65% polyester/35% cotton.  
Knitted collar and cuffs.  
Taped neck.  
Three self colour button placket.  
Taped side vents.  
Drop tail.  
Branding on right chest and left hem.

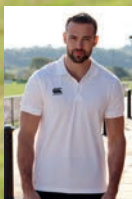
Weight: 250 gsm

Size:	S	M	L
Chest (to fit):	37/39	39/41	41/43
Size:	L	XXL	3XL*
Chest (to fit):	43/45	46/48	49/51

\*Available in 3XL.



**CN220F**



CN220 P528



## CN220F Canterbury Ladies Waimak Piqué Polo Shirt

65% polyester/35% cotton.  
Knitted collar and cuffs.  
Taped neck.  
Three self colour button placket.  
Taped side vents.  
Drop tail.  
Branding on right chest and left hem.

Weight: 250 gsm

Ladies size:	8	10	12	14	16	18
Chest (to fit):	32	34	36	38	40	42



**CN226**



## CN226 Canterbury Club Plain T-Shirt

60% cotton/40% polyester.  
Ribbed collar.  
Taped neck.  
Forward facing shoulder seams.  
Twin needle stitching.  
Branding on left sleeve.

Weight: 160 gsm

Size:	S	M	L	XL	XXL	3XL
Chest (to fit):	36	40	43	46	49	52



**NEW**



## CN251 Canterbury Cuffed Stadium Pants

100% polyester.  
Polyester/cotton 3/4 lining with nylon lower leg lining.  
Elasticated waistband with inner drawcord.  
Two side zip pockets.  
Full length leg side zips.  
Elasticated cuffed leg ends.  
Branding on right thigh.

Size:	XS	S	M	L
Waist (to fit):	28/30	30/32	32/34	34/36
Size:	XL	XXL	3XL	
Waist (to fit):	36/38	38/40	40/42	



**CN251**



CN251B P668



## CN252 Canterbury Stretch Tapered Pants

100% polyester interlock.  
Vapodri wicking technology.  
Breathable and quick drying.  
Elasticated waistband with inner drawcord.  
Two side zip pockets.  
Covered ankle zips.  
Branding on right thigh.

Size:	S	M	L
Waist (to fit):	30/32	32/34	34/36
Size:	XL	XXL	3XL
Waist (to fit):	36/38	38/40	40/42



VAPODRI

**CN252**



## CN231 Canterbury Club Hoodie

55% cotton/45% polyester.  
Drop shoulder style.  
Jersey lined hood with self colour drawcord.  
Forward facing shoulder seams.  
Front pouch pocket.  
Ribbed cuffs and hem.  
Branding on lower right sleeve.

Weight: 300 gsm

Size:	XS	S	M	L
Chest (to fit):	34/36	37/39	39/41	41/43
Size:	XL	XXL	3XL	
Chest (to fit):	43/45	46/48	49/51	



**CN231**



CN231B P642



**NEW**



**CN250**

CN250F P529



CN250B P668

### CN250 Canterbury Open Hem Stadium Pants

100% polyester.  
Polyester/cotton 3/4 lining with nylon lower leg lining.  
Elasticated waistband with inner drawcord.  
Two side zip pockets. Full length leg side zips.  
Open hem style with adjuster tabs on leg ends.  
Branding on right thigh.



Size:	XS	S	M	L	XL	XXL	3XL
Waist (to fit):	28/30	30/32	32/34	34/36	36/38	38/40	40/42

### CN250F Canterbury Ladies Open Hem Stadium Pants

100% polyester.  
Polyester/cotton 3/4 lining with nylon lower leg lining.  
Elasticated waistband with inner drawcord.  
Two side zip pockets.  
Full length leg side zips.  
Open hem style with adjuster tabs on leg ends.  
Branding on right thigh.



Ladies size:	8	10	12	14	16	18
Waist (to fit):	24	26	28	30	32	34

**CN250F**

CN250 P529



CN250B P668

## GLENMUIR 1891

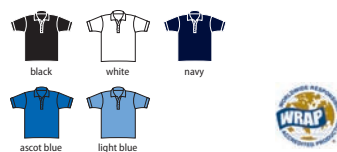
### GM27 Glenmuir Classic Fit Piqué Polo Shirt

100% combed cotton.  
Supersoft. Breathable. Anti-curl ribbed knit collar.  
Taped neck. Locker patch. Four self colour button placket. Cuffed sleeves. Side vents.  
Twin needle stitching.  
Branding on right sleeve.

Weight: 180 gsm

Size:	S	M	L
Chest (to fit):	36/38	39/41	42/44
Size:	XL	XXL	
Chest (to fit):	45/48	49/52	

Additional colours available on request.



## GLENMUIR 1891

### GM42 Glenmuir Plain Mercerised Polo Shirt

100% mercerised 2/70s cotton jersey.  
Breathable.  
Anti-curl ribbed knit collar.  
Taped neck.  
Three button placket.  
Side vents.  
Twin needle sleeves and hem.  
Branding on right sleeve.

Weight: 160 gsm

Size:	S	M	L
Chest (to fit):	36/38	39/41	42/44
Size:	XL	XXL	
Chest (to fit):	45/48	49/52	

Additional colours available on request.

**GM27 [MSC7211-KIN]****GM42 [MSL7284-TAR]**

## GLENMUIR 1891

### GM97 Glenmuir Micro Stripe Polo Shirt

88% performance polyester/12% elastane.  
Moisture wicking, breathable and quick drying.  
Micro stripe design.  
Anti-curl tailored collar.  
Hanging loop.  
Twin needle half moon back yoke.  
Three button placket.  
Side vents. Drop tail.  
Twin needle sleeves and hem.  
Branding on buttons and right sleeve.

Weight: 180 gsm

Size:	S	M	L
Chest (to fit):	36/38	39/41	42/44
Size:	XL	XXL	
Chest (to fit):	45/48	49/52	

**GM97 [MSP7549-TOR]**



# 530 SPORTS - GLENMUIR GOLFWEAR

**GM77** [MSP7373-DEAC]

**GLENMUIR**  
1891



## **GM77** Glenmuir Performance Piqué Polo Shirt

100% polyester.  
Moisture wicking, breathable and quick drying. Ribbed collar.  
Locker patch. Three button placket. Side vents. Twin needle sleeves  
and hem. Branding on right sleeve.

Weight: 160 gsm

<b>Size:</b>	S	M	L	XL	XXL
<b>Chest (to fit):</b>	36/38	39/41	42/44	45/48	49/52



**Sedex**

**GM84** [LSP2540-PALO]

**GLENMUIR**  
1891



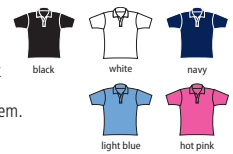
## **GM84** Glenmuir Ladies Piqué Polo Shirt

100% polyester. Moisture wicking, breathable and quick  
drying. Ribbed collar. Extended five button placket with  
engraved buttons. Side vents. Twin needle sleeves and hem.  
Branding above right hem.

Weight: 165 gsm

<b>Size:</b>	S	M	L	XL
<b>Ladies size:</b>	8/10	12/14	14/16	18/20

Additional colours available on request.



**Sedex**

PERFORMANCE

## **GM112** Storm Bloc Performance Jacket P533



**GLENMUIR**  
1891

**CRAFTING THE FINEST GOLF  
AND LEISUREWEAR SINCE 1891**

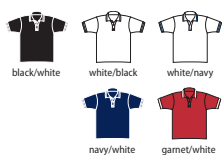


**GM85 [MSP7422-ETH]****GLENMUIR**  
1891**GM85 Glenmuir  
Tipped Piqué Polo Shirt**

100% polyester.  
Moisture wicking, breathable and quick drying.  
Contrast herringbone stitching on ribbed collar and cuffs.  
Three button placket with contrast inner.  
Engraved buttons. Branding on right sleeve.

Weight: 180 gsm

Size:	S	M	L	XL	XXL
Chest (to fit):	36/38	39/41	42/44	45/48	49/52



Sedex®

**GM25 Glenmuir  
V Neck Slipover**

100% combed cotton.  
12 gauge. Supersoft and lightweight. Breathable.  
Ribbed knit V neck, armholes and hem. Machine washable.  
Branding on right side above hem.  
Ladies style available on request.

Size:	S	M	L	XL	XXL
Chest (to fit):	36/38	39/41	42/44	45/48	49/52

Additional colours available on request.

**GM25 [MKC7079SO-THO]****GLENMUIR**  
1891**GLENMUIR**  
1891**GM22 Glenmuir  
V Neck Cotton Sweater**

100% combed cotton.  
12 gauge.  
Set in sleeves.  
Supersoft and lightweight.  
Breathable.  
Ribbed knit neck, cuffs and hem.  
Machine washable.  
Branding on right sleeve.

Size:	S	M	L
Chest (to fit):	36/38	39/41	42/44
Size:	XL	XXL	
Chest (to fit):	45/48	49/52	

Additional colours available on request.

**GM22 [MKC6884VN-EDEN]**

GM93 P531

**GLENMUIR**  
1891**GM93 Glenmuir  
Ladies V Neck Cotton Sweater**

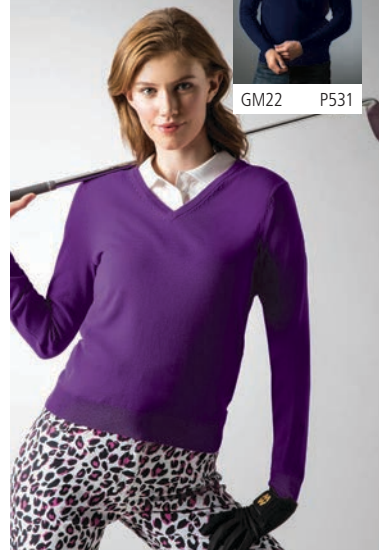
100% combed cotton.  
12 gauge.  
Set in sleeves.  
Supersoft and lightweight.  
Breathable.  
Ribbed knit neck, cuffs and hem.  
Machine washable.  
Branding above right hem.

Size:	S	M	L	XL
Ladies size:	8/10	12/14	14/16	18/20

Additional colours available on request.

**GM93 [LKC2591VN-DAR]**

GM22 P531

**GLENMUIR**  
1891**GM06 Glenmuir  
Touch of Cashmere  
V Neck Sweater**

95% cotton/5% cashmere.  
10 gauge.  
Set in sleeves.  
Supersoft and lightweight.  
Breathable.  
Ribbed knit neck, cuffs and hem.  
Machine washable.

Size:	S	M	L
Chest (to fit):	36/38	39/41	42/44
Size:	XL	XXL	
Chest (to fit):	45/48	49/52	



Sedex®

**GM06 [MKC7516VN-GLE]**



## GM11 [MKL5902CN-MOR]



### GLENMUIR 1891

#### GM11 Glenmuir Crew Neck Lambswool Sweater

100% lambswool.  
15 gauge.  
Set in sleeves.  
Breathable.  
Ribbed knit neck, cuffs and hem.  
Shrink resistant.  
Machine washable.  
Branding on right sleeve.  
Ladies style available on request.

Size:	S	M	L
Chest (to fit):	36/38	39/41	42/44
Size:	XL	XXL	
Chest (to fit):	45/48	49/52	

Additional colours available on request.



### GLENMUIR 1891

#### GM12 Glenmuir Zip Neck Lambswool Sweater

100% lambswool.  
15 gauge.  
Set in sleeves.  
Zip neck with branded zip pull.  
Ribbed knit collar, cuffs and hem.  
Shrink resistant.  
Machine washable.  
Branding on right sleeve.

Size:	S	M	L
Chest (to fit):	36/38	39/41	42/44
Size:	XL	XXL	
Chest (to fit):	45/48	49/52	

Additional colours available on request.



## GM12 [MKL7282ZN-COL]



## GM10 [MKL5900VN-LOM]



### GLENMUIR 1891

#### GM10 Glenmuir V Neck Lambswool Sweater

100% lambswool.  
15 gauge.  
Set in sleeves.  
Breathable.  
Ribbed knit neck, cuffs and hem.  
Shrink resistant.  
Machine washable.  
Branding on right sleeve.

Size:	S	M	L
Chest (to fit):	36/38	39/41	42/44
Size:	XL	XXL	
Chest (to fit):	45/48	49/52	

Additional colours available on request.



### GLENMUIR 1891

#### GM111 Glenmuir Zip Neck Midlayer

90% performance polyester/10% elastane.  
Brushed tricot backing.  
Lightweight.  
Moisture wicking, breathable fabric.  
Contrast inner collar.  
Contrast YKK interlock zip neck with chin guard.  
Jersey cuffs and hem.  
Branding at back neck.

Size:	S	M	L
Chest (to fit):	36/38	39/41	42/44
Size:	XL	XXL	
Chest (to fit):	45/48	49/52	



## GM111 [F7503ZN-WIC]



## GM81 [MKC7381ZN-DEV]



### GLENMUIR 1891

#### GM81 Glenmuir Zip Neck Cotton Sweater

100% combed cotton.  
12 gauge.  
Set in sleeves.  
Supersoft and lightweight.  
Covered zip.  
Ribbed knit neck, cuffs and hem.  
Machine washable.  
Branding on right sleeve and zip pull.

Size:	S	M	L
Chest (to fit):	36/38	39/41	42/44
Size:	XL	XXL	
Chest (to fit):	45/48	49/52	

Additional colours available on request.



### GLENMUIR 1891

#### GM98 Glenmuir Ladies Zip Neck Sweater

100% combed cotton.  
12 gauge.  
Supersoft and lightweight.  
Breathable.  
Set in sleeves.  
Covered zip with diamante detail.  
Ribbed knit neck, cuffs and hem.  
Machine washable.  
Branding on right hem.

Size:	S	M	L	XL
Ladies size:	8/10	12/14	14/16	18/20

Additional colours and sizes available on request.



## GM98 [LKC2523ZN]



GM81 P532

GM98 P532

**GM112** [MW7566ZT-ELR]**GLENMUIR**  
1891**GM112 Glenmuir Storm Bloc Performance Jacket**

Two layer performance polyester. Showerproof. Full length contrast zip. Panel detail on sleeves and body sides. Two front pockets. Bound cuffs and hem. Branding on back neck and right sleeve.

<b>Size:</b>	S	M	L
<b>Chest (to fit):</b>	36/38	39/41	42/44
<b>Size:</b>	XL	XXL	
<b>Chest (to fit):</b>	45/48	49/52	

**NEW**SUNDERLAND  
OF SCOTLAND**SN17 Sunderland Vancouver Pro Jacket**

100% polyester. Mechanical stretch. Mesh lining. Lightweight. Waterproof with taped seams. Windproof and breathable. Collar high full length waterproof contrast zip with inner zip guard. Contrast panels and piping to collar, sleeves and sides. Two fleece lined handwarmer front pockets. Tear release adjustable cuffs. Adjustable drawcord hem. Branding on right sleeve and back of collar.

<b>Size:</b>	S	M	L	XL	XXL
<b>Chest (to fit):</b>	38	40	42	44	46

**NEW**  
COLOURS**SN17** [SUNMR41-VPJKT]**GM113** [MG7574ZT-SHI]**GLENMUIR**  
1891**GM113 Glenmuir Storm Bloc Performance Gilet**

100% nylon. Performance polyester side body panels - black and navy are self colour, light grey marl has charcoal contrast. Bound collar, armholes and hem. Full length covered zip with branded inner zip guard. Branding above centre rear hem.

<b>Size:</b>	S	M	L
<b>Chest (to fit):</b>	36/38	39/41	42/44
<b>Size:</b>	XL	XXL	
<b>Chest (to fit):</b>	45/48	49/52	

**NEW**SUNDERLAND  
OF SCOTLAND**SN22 Sunderland Padded Jacket**

Nylon quilted front and back panels. Polyester jersey collar, sleeves and side panels. Polyester padding. Brushed back fleece. Showerproof, windproof and breathable. Contrast low profile branded YKK zip with chin guard and inner zip guard. Contrast right chest zip pocket and two front pockets. Contrast stretch bound cuffs and hem. Branding on back of collar.

<b>Size:</b>	S	M	L	XL	XXL
<b>Chest (to fit):</b>	38	40	42	44	46

**SN22** [SUNMC83]**SN01** [SUNMR35-VQTRS]SUNDERLAND  
OF SCOTLAND**SN01 Sunderland Lightweight Waterproof Trousers**

Polyester outer. Ultra soft laminated waterproof, breathable fabric. Taped seams. Part elasticated waistband with drawcord adjuster. Zip fly with stud over. Easy access fleece lined side pockets. Rear scorecard pocket with tear release storm flap. Articulated knees. Ankle zips with tear release adjuster. Branding on rear pocket and lower right leg.

<b>Size:</b>	S*	M	L	XL	XXL
<b>Waist (to fit):</b>	32	34	36	38	40
<b>Leg length:</b>	Short 29*	Reg 31*	Long 33		

\*Small only available in short and reg length.

SUNDERLAND  
OF SCOTLAND**SN23 Sunderland Padded Gilet**

Nylon quilted front and back panels. Contrast polyester jersey collar and side panels. Polyester padding. Brushed back fleece. Showerproof, windproof and breathable. Contrast low profile branded YKK zip with chin guard and inner zip guard. Contrast right chest zip pocket and two front pockets. Contrast stretch bound armholes and hem. Branding on back of collar.

<b>Size:</b>	S	M	L	XL	XXL
<b>Chest (to fit):</b>	38	40	42	44	46

**SN23** [SUNMC82]