

Sweatshirts	635 - 638	Long sleeve t-shirts	657	Soft shell jackets	670 - 671
Sweat jackets	638	Vests & crop tops	658 - 659	Jackets & outerwear	671 - 676
Cardigans & knitwear	639	Performance t-shirts	660 - 661	Bodywarmers	676
Hoodies	640 - 642	Performance polos	661	Safetywear	677 - 678
Contrast hoodies	643 - 644	Shorts & skorts	662 - 663	Aprons	678
Zip hoodies	644 - 645	Leggings	663	Baby & toddler wear	679 - 691
All in one	646	Track collection	664 - 665		
Jog pants	646 - 647	SOL'S football	665 - 666		
Polo shirts	648 - 649	Canterbury rugby	667 - 668		
Polyester polo shirts	650	Canterbury cricket	668		
T-shirts	651 - 656	Fleece	669 - 670		

## larkwood

### Baby and Toddler Collection



LW72T Striped Pyjamas Page 690



LW28T Striped Long Sleeve T-Shirt Page 682



LW57T Long Sleeve Striped Bodysuit Page 687



LW35T Rain Jacket Page 683  
LW27T Striped Crew Neck T-Shirt Page 681

## LARKWOOD STRIPES COLLECTION

SS8B [620390]



SS8 P209



### SS8B Fruit of the Loom Kids Classic Raglan Sweatshirt

80% cotton/20% polyester.\*  
Jersey taped back neck.  
Cotton/Lycra® ribbed collar, cuffs and hem.  
Twin needle stitching.  
Cut out label.

Weight: Heather Grey 260 gsm, Cols 280 gsm

Age:	3-4	5-6	7-8
Height (cm):	104	116	128
Chest (to fit):	22/24	26/28	30
Age:	9-11	12-13	14-15**
Height (cm):	140	152	164
Chest (to fit):	32	34	36

\*Heather navy, heather royal, heather green and heather red 60% cotton/40% polyester.

\*\*14-15 subject to VAT.



762B



762M P209



### 762B Jerzees Schoolgear Kids Raglan Sweatshirt

50% polyester/50% combed ringspun cotton.\*  
Fade resistant.  
SpotShield™ stain resistant coating.  
Reinforced seams.  
Taped neck.  
Name label at neck.  
Tubular body.  
Twin needle stitching.

Weight: 295 gsm

Age:	1-2	3-4	5-6	7-8	9-10	11-12
Height (cm):	90	104	116	128	140	152
Chest (to fit):	20/22	22/25	25/28	28/30	30/32	32/34

\*Light oxford 53% polyester/47% cotton.



# 636 SWEATSHIRTS

AC001B



AC001 P209



## AC001B AWDIs Academy Kids Raglan Sweatshirt

80% ringspun cotton/20% polyester.  
Soft cotton faced fabric. Taped neck.  
Ribbed collar, cuffs and hem. Twin needle stitching.  
Name label at back neck.

Weight: 280 gsm

Age:	3-4	5-6	7-8	9-10	11-12	13
Height (cm):	102	114	126	138	150	156
Chest (to fit):	26	28	30	32	34	36



## SSE8B Fruit of the Loom Kids Premium Raglan Sweatshirt

70% cotton/30% polyester fleece.  
Cotton/elastane ribbed collar, cuffs and hem.  
Jersey taped neck. Side seams. Twin needle stitching.

Weight: Heather Grey 260 gsm, Cols 280 gsm

Age:	3-4	5-6	7-8	9-11	12-13	14-15*
Height (cm):	104	116	128	140	152	164
Chest (to fit):	22/24	26/28	30	32	34	36

\*14-15 subject to VAT.

SS9B [620410]



SS9 P215



## SS9B Fruit of the Loom Kids Classic Drop Shoulder Sweatshirt

80% cotton/20% polyester.\*  
Cotton/Lycra® ribbed collar, cuffs and hem.  
Jersey taped back neck.  
Twin needle stitching.  
Cut out label.

Weight: White and Heather Grey 260 gsm,  
Cols 280 gsm

Age:	3-4	5-6	7-8	9-11	12-13	14-15**
Height (cm):	104	116	128	140	152	164
Chest (to fit):	22/24	26/28	30	32	34	36

\*Heather navy, heather royal, heather green and heather red 60% cotton/40% polyester.  
\*\*14-15 subject to VAT.



GD56B [18000B]

**GILDAN®**  
Heavy Blend™

GD56 P214

**GD56B Gildan**  
**Kids Heavy Blend™ Drop Shoulder**  
**Sweatshirt**

50% cotton/50% polyester.  
Pre-shrunk. Air jet yarn, softer feel and reduced pilling.  
Drop shoulder style. Ribbed trim with spandex at neck,  
cuffs and hem. Tubular body. Twin needle stitching.  
Tear out label (some colours in transition).

Weight: White 257 gsm, Cols 271 gsm

Size:	XS	S	M	L	XL
Age:	3-4	5-6	7-8	9-11	12-13
Chest (to fit):	24/26	26/28	30/32	32/34	34/36



Sedex®



Tear Out

**SM515 SF Minni**  
**Kids Cropped Slounge Sweatshirt**

Black 80% cotton/20% polyester.  
Heather grey 70% cotton/30% polyester.  
Brushed back fleece. Drop shoulder style.  
Oversized fit. 2x2 ribbed collar and cuffs. Taped neck.  
Cropped length. Raw edge hem. Tear out label.

Weight: 280 gsm

Age:	5-6	7-8	9-10	11-12	13
Height (cm):	116	128	140	152	164
Chest (to fit):	24	26	28	30.5	33



Tear Out

SM515



SK515 P225



JH030B

**JustHoods®**  
AWDis

JH030 P213

**JH030B AWDIs**  
**Kids Sweatshirt**

80% ringspun cotton/20% polyester.\*  
Soft cotton faced fabric.  
Brushed back fleece.  
Drop shoulder style.  
Stylish fit.  
Taped neck.  
Ribbed collar, cuffs and hem.  
Name label sewn in side seam.  
Twin needle stitching.  
Tear out label.

Weight: 280 gsm

Size:	XS	S	M	L	XL
Age:	3-4	5-6	7-8	9-11	12-13
Chest (to fit):	26	28	30	32	34

\*Charcoal 52% cotton/48% polyester.

\*\*Heather grey 75% cotton/25% polyester.



{ VEGAN }

Sedex®

Tear Out

# 638 SWEATSHIRTS & JACKETS

**JH043B**

**JustHoods®**  
AWDis



JH043 P235



JH043F P235



## JH043B AWDIs Kids Varsity Jacket

70% ringspun cotton/30% polyester.\*  
Soft cotton faced fabric. Brushed back fleece. Taped neck with hanging loop. Knitted collar, cuffs and hem with stripe detail. Contrast stud closure. Contrast sleeves. Two welt pockets. Tear out label.

Weight: 330 gsm



Size:	XS	S	M	L	XL
Age:	3-4	5-6	7-8	9-11	12-13
Chest (to fit):	26	28	30	32	34

\*Heather grey 65% cotton/35% polyester.



## SS92B Fruit of the Loom Kids Classic Sweat Jacket

80% cotton/20% polyester.  
Raglan sleeves. Full length covered zip. Taped neck. Front pouch pockets. Cotton/Lycra® ribbed cuffs and hem. Cut out label.

Weight: 280 gsm

Age:	5-6	7-8	9-11	12-13	14-15*
Height (cm):	116	128	140	152	164
Chest (to fit):	26/28	30	32	34	36

\*14-15 subject to VAT.



**AC003B**

**AWDis  
ACADEMY**



AC003 P219



## AC003B AWDIs Academy Kids V Neck Sweatshirt

80% ringspun cotton/20% polyester.  
Soft cotton faced fabric.  
Drop shoulder style. Taped neck. Ribbed neckline, cuffs and hem. Twin needle stitching. Name label at back neck.

Weight: 280 gsm



Age:	3-4	5-6	7-8	9-10	11-12	13
Height (cm):	102	114	126	138	150	156
Chest (to fit):	26	28	30	32	34	36



## 272B Jerzees Schoolgear Kids V Neck Sweatshirt

50% combed ringspun cotton/50% polyester.\*  
Drop shoulder style. Side seams. Elastane rib with Lycra® at collar, cuffs and hem.

Weight: 295 gsm



Age:	3-4	5-6	7-8	9-10	11-12
Height (cm):	104	116	128	140	152
Chest (to fit):	22/25	25/28	28/30	30/32	32/34

\*Light oxford 53% polyester/47% cotton.

**SS92B [620050]**



SS92 P233



SS79 P233



**272B**



272M P219



**AC002B**  
**AWDis Academy**



**AC002B AWDIs Academy Kids Sweat Cardigan**

80% ringspun cotton/20% polyester. Soft cotton faced fabric. Drop shoulder style. Taped neck. Self coloured button closure. Two front pockets. Ribbed cuffs and hem. Twin needle stitching. Name label at back neck.

Weight: 280 gsm

Age:	3-4	5-6	7-8	9-10	11-12	13
Height (cm):	102	114	126	138	150	156
Chest (to fit):	26	28	30	32	34	36



**273B Jerzees Schoolgear Kids Sweat Cardigan**

50% combed ringspun cotton/50% polyester.\* Drop shoulder style. Five button closure. Side seam pockets. Elastane rib with Lycra® at collar, cuffs and hem.

Weight: 295 gsm

Age:	3-4	5-6	7-8	9-10	11-12
Height (cm):	104	116	128	140	152
Chest (to fit):	22/25	25/28	28/30	30/32	32/34



\*Light oxford 53% polyester/47% cotton.

**273B**



273M P219



**HENBURY**

**H720 Henbury Lightweight Cotton Acrylic V Neck Sweater**

50% cotton/50% acrylic. 12 gauge. Set in sleeves. Semi-fashioned sleeve and neck detail. 1x1 ribbed neck, cuffs and hem.

Size:	XXS	XS	S	M	L
Chest (to fit):	32/34	34/36	36/38	38/40	42
Size:	XL	XXL	3XL	4XL	
Chest (to fit):	44/46	48	50/52	54	

Garment is an adult style starting at youth sizes. Subject to VAT.



**H720**

**HENBURY**

**H721 Henbury Ladies Lightweight Cotton Acrylic V Neck Sweater**

50% cotton/50% acrylic. 12 gauge. Set in sleeves. Semi-fashioned sleeve and neck detail. 1x1 ribbed neck. Tube knit cuffs and hem.

Size:	XXS	XS	S	M	L
Ladies size:	6	8	10	12	14
Chest (to fit):	28/30	30/32	32/34	34/36	36/38
Size:	XL	XXL	3XL	4XL	
Ladies size:	16	18	20	22	
Chest (to fit):	38/40	40/42	42/44	44/46	

Garment is an adult style starting at youth sizes. Subject to VAT.



**H721**

**HENBURY**

**H723 Henbury Ladies Cotton Acrylic V Neck Cardigan**

50% cotton/50% acrylic. 12 gauge. Set in sleeves. Seven shell effect buttons. Two front pockets. Longer length. Tube knit cuffs and hem.

Size:	XXS	XS	S	M	L
Ladies size:	6	8	10	12	14
Chest (to fit):	28/30	30/32	32/34	34/36	36/38
Size:	XL	XXL	3XL	4XL	
Ladies size:	16	18	20	22	
Chest (to fit):	38/40	40/42	42/44	44/46	

Garment is an adult style starting at youth sizes. Subject to VAT.



**H723**

## JH001B

**JustHoods**  
AWDis



JH001 P247



JH001F P264

## JH201B

**JustHoods**  
AWDis



JH201 P255

**NEW**

### JH201B AWDIs Kids Organic Hoodie

80% organic cotton/20% recycled polyester.\*  
Soft cotton faced fabric. Brushed back fleece.  
Drop shoulder style. Double fabric hood.  
No drawcords to comply with EU regulations.  
Front pouch pocket.  
Ribbed cuffs and hem.  
Twin needle stitching.  
Tear out label.



Weight: 280 gsm

Size:	XXS	XS	S	M	L	XL
Age:	1-2	3-4	5-6	7-8	9-11	12-13
Chest (to fit):	24	26	28	30	32	34

\*Heather grey 75% organic cotton/25% recycled polyester.



### 265B Russell Kids Authentic Hooded Sweatshirt

80% combed ringspun cotton/20% polyester.  
Cotton faced fabric. Brushed back fleece. Drop shoulder style.  
Double fabric hood with topstitch detail. Taped neck.  
Front pouch pocket with bartacks. 1x1 ribbed cuffs and hem.  
Coverseamed around hood, shoulders, armholes, cuffs and hem.



Weight: 280 gsm

Age:	3-4	5-6	7-8	9-10	11-12	13-14*
Height (cm):	104	116	128	140	152	164
Chest (to fit):	22/25	25/28	28/30	30/32	32/34	34/36

\*13-14 subject to VAT.

## 265B



265M P250



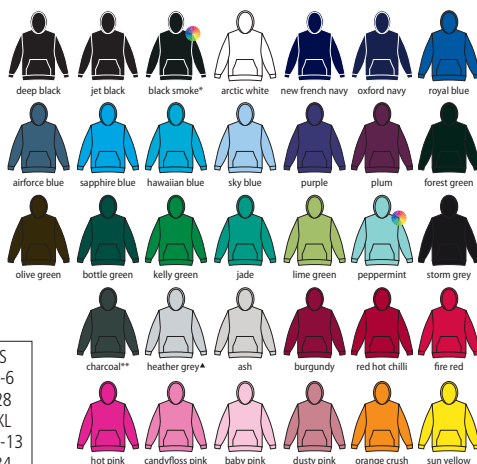
265F P264

### JH001B AWDIs Kids Hoodie

80% ringspun cotton/20% polyester.\*  
Soft cotton faced fabric.  
Brushed back fleece.  
Drop shoulder style.  
Double fabric hood.  
No drawcords to comply with EU regulations.  
Front pouch pocket.  
Ribbed cuffs and hem.  
Twin needle stitching.  
Tear out label.

Weight: 280 gsm

Size:	XXS	XS	S
Age:	1-2	3-4	5-6
Chest (to fit):	24	26	28
Size:	M	L	XL
Age:	7-8	9-11	12-13
Chest (to fit):	30	32	34



\*Black smoke 70% cotton/30% polyester.

\*\*Charcoal 52% cotton/48% polyester.

▲Heather grey 75% cotton/25% polyester.



SS14B [620430]



SS14 P249



SS801 P264

### SS14B Fruit of the Loom Kids Classic Hooded Sweatshirt

80% cotton/20% polyester.  
Drop shoulder style. Double fabric hood.  
Single jersey taped back neck. Front pouch pocket.  
Cotton/Lycra® ribbed cuffs and hem.  
Twin needle stitching. Cut out label.

Weight: White and Heather Grey 260 gsm,  
Cols 280 gsm

Age:	5-6	7-8	9-11	12-13	14-15**
Height (cm):	116	128	140	152	164
Chest (to fit):	26/28	30	32	34	36

\*Heather navy, heather royal, heather green and  
heather red 60% cotton/40% polyester.  
\*\* 14-15 subject to VAT.



### 575B Jerzees Schoolgear Kids Hooded Sweatshirt

50% combed ringspun cotton/50% polyester.\*  
Drop shoulder style. Double thickness hood with topstitch  
detail. Taped neck. Name label. Slim sleeves with wider cuffs.  
Front pouch pocket with bartacks. Tubular body.  
Coverseamed armholes, cuffs and hem.

Weight: 295 gsm

Age:	3-4	5-6	7-8	9-10	11-12
Height (cm):	104	116	128	140	152
Chest (to fit):	22/25	25/28	28/30	30/32	32/34

\*Light oxford 53% polyester/47% cotton.



575B



575M P259



GD57B [18500B]

GILDAN®  
Heavy Blend™


GD57 P248



### GD57B Gildan Kids Heavy Blend™ Hooded Sweatshirt

50% cotton/50% polyester.  
Pre-shrunk.  
Air jet yarn, softer feel and reduced pilling.  
Drop shoulder style.  
Double fabric hood.  
Front pouch pocket.  
Ribbed trim with spandex at cuffs and hem.  
Twin needle stitching.  
Tear out label (some colours in transition).

Weight: White 257 gsm, Cols 271 gsm

Size:	XS	S	M	L	XL
Age:	3-4	5-6	7-8	9-11	12-13
Chest (to fit):	24/26	26/28	30/32	32/34	34/36



## JH006B



JH006 P251

## Just Hoods®

### JH006B AWDiS Kids Sports Polyester Hoodie

100% polyester.  
Brushed back fleece.  
Drop shoulder style. Sporty fit.  
Three panel double fabric hood.  
No drawcords to comply with EU regulations.  
Front pouch pocket.  
Self fabric cuffs and hem.  
Twin needle stitching.  
Tear out label.

Weight: 200 gsm

Size:	XS	S	M	L	XL
Age:	3-4	5-6	7-8	9-11	12-13
Chest (to fit):	26	28	30	32	34



Tear Out

## JH004B



JH004 P250

## Just Hoods®

### JH004B AWDiS Kids Electric Hoodie

85% polyester/15% ringspun cotton.  
Brushed back fleece. Drop shoulder style.  
Double fabric hood. No drawcords to comply with EU regulations. Front pouch pocket.  
Ribbed cuffs and hem.  
Twin needle stitching.  
Tear out label.

Weight: 280 gsm

Size:	XS	S	M	L	XL
Age:	3-4	5-6	7-8	9-11	12-13
Chest (to fit):	26	28	30	32	34



## CN231B



CN231 P261



### CN231B Canterbury Kids Club Hoodie

55% cotton/45% polyester.  
Drop shoulder style.  
Jersey lined hood.  
Forward facing shoulder seams.  
Front pouch pocket.  
Ribbed cuffs and hem.  
Branding on lower right sleeve.

Weight: 300 gsm

Age:	6	8	10
Chest (to fit):	23/24	25/26	27/29
Age:	12	14*	
Chest (to fit):	30/32	32/34	

\* 14 subject to VAT.



NEW

## 13255

## SOL'S®

the fair spirit



13251 P259



## 13255 SOL'S

### Kids Slam Hooded Sweatshirt

50% cotton/50% polyester.  
Brushed back fleece. Drop shoulder style.  
Double fabric hood. Taped neck. Front pouch pocket.  
Ribbed cuffs and hem. Twin needle stitching.  
This item runs small in comparison to some other brands.  
Please check sizing before decoration.

Weight: 280 gsm

Age:	4	6	8	10	12
Height (cm):	96-104	106-116	118-128	130-140	142-152



### SS121B Fruit of the Loom Kids Lightweight Hooded Sweatshirt

80% cotton/20% polyester.  
Raglan sleeves. Hood without drawcord.  
Front pouch pocket. Cotton/Lycra® ribbed cuffs and hem. Twin needle stitching. Cut out label.

Weight: 240 gsm

Age:	5-6	7-8	9-11	12-13	14-15*
Height (cm):	116	128	140	152	164
Chest (to fit):	26/28	30	32	34	36

\* 14-15 subject to VAT.



## SS121B [620090]



SS121 P253



SS181 P265



JH009B

**JustHoods®**  
AWDis



JH009 P271



## JH009B AWDIs Kids Baseball Hoodie

80% ringspun cotton/20% polyester.\*  
Soft cotton faced fabric.

Brushed back fleece. Contrast raglan sleeves.

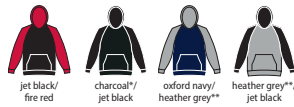
Contrast double fabric hood. No drawcords to comply with EU regulations. Front pouch pocket. Ribbed cuffs and hem. Twin needle stitching. Name label sewn into side seam. Tear out label.

Weight: 280 gsm

Size:	XS	S	M	L	XL
Age:	3-4	5-6	7-8	9-11	12-13
Chest (to fit):	26	28	30	32	34

\*Charcoal 52% cotton/48% polyester.

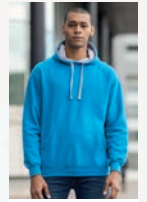
\*\*Heather grey 75% cotton/25% polyester.



AW APPROVED VEGAN Sedex®

JH003B

**JustHoods®**  
AWDis



JH003 P268



## JH014B AWDIs Kids Camo Hoodie

70% ringspun cotton/30% polyester.

Soft cotton faced fabric. Brushed back fleece. Drop shoulder style.

Double fabric hood. No drawcords to comply with EU regulations.

Front pouch pocket. Ribbed cuffs and hem. Twin needle stitching. Tear out label.

Weight: 280 gsm

Size:	XS	S	M	L	XL
Age:	3-4	5-6	7-8	9-11	12-13
Chest (to fit):	26	28	30	32	34



AW APPROVED VEGAN Sedex®

JH014B

**JustHoods®**  
AWDis



JH014 P270



## JH003B AWDIs Kids Varsity Hoodie

80% ringspun cotton/20% polyester.\*

Drop shoulder style.

Brushed back fleece.

Double fabric hood with contrast inner.

No drawcords to comply with EU regulations.

Front pouch pocket.

Ribbed cuffs and hem.

Twin needle stitching.

Tear out label.

Weight: 280 gsm

Size:	XS	S	M	L	XL
Age:	3-4	5-6	7-8	9-11	12-13
Chest (to fit):	26	28	30	32	34

\*Heather grey 75% cotton/25% polyester.

\*\*Charcoal 52% cotton/48% polyester.



AW APPROVED VEGAN

Tear Out



Sedex®

## JH053B

**JustHoods®**  
AWDis



JH053 P282



### JH053B AWDIs Kids Varsity Zoodie

80% ringspun cotton/20% polyester.\*  
Soft cotton faced fabric. Brushed back fleece. Double fabric hood with contrast inner. No drawcord to comply with EU regulations. Full length contrast plastic zip. Front pouch pockets. Ribbed cuffs and hem. Twin needle stitching. Tear out label.

Weight: 280 gsm

Size:	XS	S	M	L	XL
Age:	3-4	5-6	7-8	9-11	12-13
Chest (to fit):	26	28	30	32	34

\*Heather grey 75% cotton/25% polyester.



AN APPROVED VEGAN Sedex

## JH051B

**JustHoods®**  
AWDis



JH051 P283



### JH051B AWDIs Kids Urban Varsity Zoodie

70% ringspun cotton/30% polyester.\*  
Soft cotton faced fabric. Brushed back fleece. Drop shoulder style. Three panel hood with contrast single jersey lining. No drawcords to comply with EU regulations. Metal YKK zip and pull with chin protector. Contrast sleeves. Front pouch pockets. Ribbed cuffs and hem with stripe detail. Tear out label.

Weight: 330 gsm

Size:	XS	S	M	L	XL
Age:	3-4	5-6	7-8	9-11	12-13
Chest (to fit):	26	28	30	32	34

\*Heather grey 65% cotton/35% polyester.



AN APPROVED VEGAN Sedex

### LV339 Finden & Hales Kids Contrast Hooded Sweatshirt

80% cotton/20% polyester.  
Contrast lined hood. Front pouch pockets. Contrast side panelling. Contrast piping on raglan sleeves. Ribbed cuffs and hem.

Weight: 300 gsm

Age:	5-6	7-8	9-10	11-12	13-14*
Height (cm):	110/116	122/128	134/140	146/152	164
Chest (to fit):	24/26	26/28	28/30	30/32	32/34

\*13-14 subject to VAT.



Sedex

### SM526 SF Minni Kids Zip Hooded Sweatshirt

60% cotton/40% polyester.\*  
Slim fit. Brushed back fleece. Raglan sleeves. Two piece jersey lined hood. Taped neck. Full length metal zip. Two front pockets. Deep stretch ribbed cuffs and hem. Coverstitch detail. Tear out label.

Weight: 250 gsm

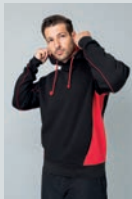
Age:	5-6	7-8	9-10	11-12
Height (cm):	116	128	140	152
Chest (to fit):	24	26	28	30.5

\*Heather grey 75% cotton/20% polyester/5% viscose.



## LV339

**FINDEN & HALES**



LV335 P269



## SM526



SF526 P277



**SS16B** [620450]


SS16 P272



SS82 P284

**SS16B Fruit of the Loom Kids Classic Zip Hooded Sweatshirt**

80% cotton/20% polyester.  
Drop shoulder style. Double fabric hood. Taped neck. Narrow full length covered zip. Front pouch pockets. Cotton/Lycra® ribbed cuffs and hem. Twin needle stitching. Cut out label.

Weight: Heather Grey 260 gsm, Cols 280 gsm

Age:	5-6	7-8	9-11	12-13	14-15*
Height (cm):	116	128	140	152	164
Chest (to fit):	26/28	30	32	34	36

\*14-15 subject to VAT.


**JH050B**
**JustHoods®**  
AWDis


JH050 P272



JH055 P284


**JH050B AWDIs Kids Zoodie**

80% ringspun cotton/20% polyester.\*  
Soft cotton faced fabric. Brushed back fleece. Double fabric hood. No drawcord to comply with EU regulations. Full length covered zip. Front pouch pockets. Ribbed cuffs and hem. Twin needle stitching. Tear out label.

Weight: 280 gsm

Size:	XS	S	M	L	XL
Age:	3-4	5-6	7-8	9-11	12-13
Chest (to fit):	26	28	30	32	34

\*Heather grey 75% cotton/25% polyester.


**266B Russell Kids Authentic Zip Hooded Sweatshirt**

80% combed ringspun cotton/20% polyester.  
Cotton faced fabric. Brushed back fleece. Drop shoulder style. Double fabric hood with topstitch detail. Taped neck. Full length covered YKK zip. Front pouch pockets. 1x1 ribbed cuffs and hem. Coverseamed around hood, shoulders, armholes, cuffs and hem.

Weight: 280 gsm

Age:	3-4	5-6	7-8	9-10	11-12	13-14*
Height (cm):	104	116	128	140	152	164
Chest (to fit):	22/25	25/28	28/30	30/32	32/34	34/36

\*13-14 subject to VAT.


**GD58B Gildan Kids Heavy Blend™ Zip Hooded Sweatshirt**

50% cotton/50% polyester.  
Air jet yarn, softer feel and reduced pilling. Pre-shrunk. Drop shoulder style. Unlined hood. Full length covered nylon zip. Front pouch pockets. Ribbed trim with spandex at cuffs and hem. Twin needle stitching. Tear out label (some colours in transition).

Weight: 271 gsm

Size:	XS	S	M	L	XL
Age:	3-4	5-6	7-8	9-11	12-13
Chest (to fit):	24/26	26/28	30/32	32/34	34/36

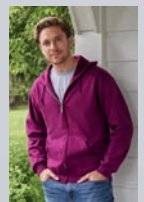

**266B**


266M P273



266F P284

**GD58B** [18600B]

**GILDAN®**  
Heavy Blend™


GD58 P273

# Just Hoods®

## NEW & ORGANIC



### JH201B Kids Organic Hoodie / XXS-XL

P640

80% organic cotton / 20% recycled polyester

**AWDis**

{ PETA - APPROVED  
VEGAN }

### SM470



SF470 P271



### SM470 SF Minni

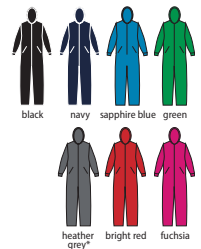
#### Kids All In One

80% cotton/20% polyester.\*  
Brushed back fleece. Fitted style. Two panel hood with single jersey lining. Taped back neck. YKK zip front opening with chin guard. 1x1 rib elasticated cuffs. Front pouch pockets. Cuffed leg ends. Flatlock stitching. Tear out label.

Weight: 280 gsm

Age:	3-4	5-6	7-8	9-10	11-12	13
Height (cm):	104	116	128	140	152	164
Chest (to fit):	22	24	26	28	30.5	33

\*Heather grey 71% cotton/23% polyester/6% viscose.



Tear Out

### SM85 SF Minni

#### Kids Lounge Pants

96% cotton/4% elastane.  
Single jersey. Elasticated waistband with mock drawcord.  
1x1 ribbed cuffed leg ends.  
Tear out label.

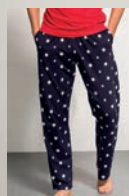
Weight: 180 gsm

Age:	5-6	7-8	9-10	11-12	13
Height (cm):	116	128	140	152	164
Waist (to fit):	22	23	24.5	26	27.5

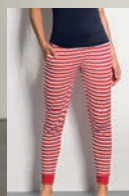


Tear Out

### SM85



SF85 P795



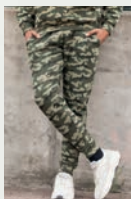
SK85 P795



NEW

**JH074B**

**JustHoods®**  
AWDis



JH074 P238



JH077 P240

## JH074B AWDIs Kids Tapered Track Pants

80% ringspun cotton/20% polyester.\* Soft cotton faced fabric. Brushed back fleece. Modern tapered fit. Elasticated ribbed waistband. No drawcords to comply with EU regulations. Two side pockets. Ribbed cuffed leg ends. Tear out label.

Weight: 280 gsm

Size:	XS	S	M	L	XL
Age:	3-4	5-6	7-8	9-11	12-13
Waist (to fit):	18	20	22	24	26

\*Heather grey 75% cotton/25% polyester.



AN APPROVED VEGAN Sedex®

## JH072B AWDIs Kids Cuffed Jog Pants

80% ringspun cotton/20% polyester.\* Soft cotton faced fabric. Brushed back fleece. 1x1 ribbed waistband. No drawcords to comply with EU regulations. Two side pockets. Cuffed leg ends. Tear out label.

Weight: 280 gsm

Size:	S	M	L	XL
Age:	5-6	7-8	9-11	12-13
Waist (to fit):	20	22	24	26

\*Heather grey 75% cotton/25% polyester.



AN APPROVED VEGAN Sedex®

**JH072B**

**JustHoods®**  
AWDis



JH072 P237

**R**  
russell

## 750B Jerzees Schoolgear Kids Elasticated Hem Jog Pants

50% combed ringspun cotton/50% polyester. Elasticated waistband and ankles. Deep side pockets. No outside leg seam.

Weight: 295 gsm

Age:	3-4	5-6	7-8	9-10	11-12
Waist (to fit):	21	22	23	24	26



## SS15B Fruit of the Loom Kids Elasticated Hem Jog Pants

80% cotton/20% polyester. Elasticated waistband and ankles. Continuous self colour drawcord. Two side pockets. Cut out label.

Weight: Heather Grey 260 gsm, Cols 280 gsm

Age:	5-6	7-8	9-11	12-13	14-15*
Height (cm):	116	128	140	152	164

\*14-15 subject to VAT.



Cut Out

**750B**



**SS15B [640510]**



SS15 P237



## SM425 SF Minni Kids Slim Cuffed Joggers

60% cotton/40% polyester.\* Brushed back fleece. Ribbed elasticated waistband with flat lace mock drawcord. Two side pockets. Rear patch pocket. Ribbed cuffed leg ends. Tear out label.

Weight: 250 gsm

Age:	5-6	7-8	9-10	11-12
Height (cm):	116	128	140	152
Waist (to fit):	22	23	24.5	26

\*Heather grey 75% cotton/20% polyester/5% viscose.



Sedex®

**SM425**



SF425 P238



SK425 P240



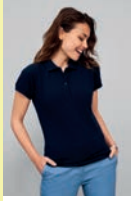
# 648 POLO SHIRTS

11344

**SOL'S**  
the fair spirit



11342 P183



11338 P196

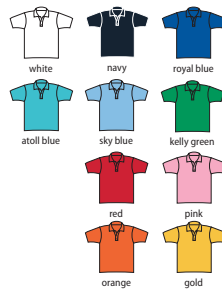


## 11344 SOL'S Kids Summer II Cotton Piqué Polo Shirt

100% ringspun combed cotton.  
Taped neck. Three self colour button placket. Hemmed sleeves.  
Side vents. Twin needle sleeves and hem. This item runs small  
in comparison to some other brands. Please check sizing  
before decoration.

Weight: 170 gsm

Age:	4	6	8	10	12
Height (cm):	96-104	106-116	118-128	130-140	142-152

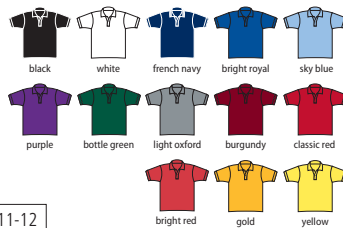


## 539B Jerzees Schoolgear Kids Poly/Cotton Piqué Polo Shirt

65% polyester/35% cotton.  
Ribbed collar and cuffs. Taped neck.  
Two self colour button placket.  
Reinforced shoulder seams. Twin needle hem.

Weight: White 210 gsm, Cols 215 gsm

Age:	1-2	3-4	5-6	7-8	9-10	11-12
Height (cm):	90	104	116	128	140	152
Chest (to fit):	20/22	22/25	25/28	28/30	30/32	32/34



539B

**R**  
russell



539M P161



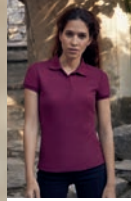
539F P175



SS11B [634170]



SS11 P161



SS86 P174



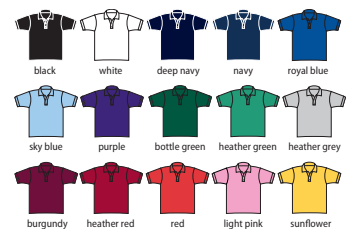
## SS11B Fruit of the Loom Kids Poly/Cotton Piqué Polo Shirt

65% polyester/35% cotton.  
Ribbed collar and cuffs.  
Taped back neck.  
Two self colour button placket.  
Reinforced shoulder seams.  
Cut out label.  
60°C wash.

Weight: White 170 gsm, Cols 180 gsm

Age:	3-4	5-6	7-8	9-11	12-13	14-15*
Height (cm):	104	116	128	140	152	164
Chest (to fit):	22/24	26/28	30	32	34	36

\*14-15 subject to VAT.



**GD40B [8800B]**

**GILDAN®**  
DryBlend™



GD40 P165

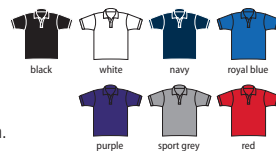


**GD40B Gildan**  
**Kids DryBlend® Jersey Polo Shirt**

50% cotton/50% polyester.  
Pre-shrunk. Moisture wicking properties.  
Ribbed collar and cuffs.  
Two wood-tone button placket. Twin needle hem.  
Tear out label (some colours in transition).

Weight: White 198 gsm, Cols 203 gsm

Age:	5-6	7-8	9-11	12-13
Chest (to fit):	28	30	32/34	34/36



**Sedex®**

**599B**

**R**  
russell



599M P168

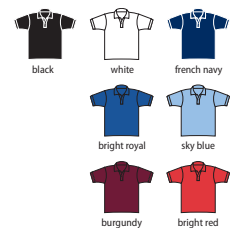


**599B Jerzees Schoolgear**  
**Kids Hardwearing Poly/Cotton Piqué Polo Shirt**

65% polyester/35% ringspun cotton.  
Double ripple effect on collar and cuffs. Two self colour button placket.  
Reinforced shoulder seams. Side vents. Twin needle hem. 60°C wash.

Weight: White 210 gsm, Cols 215 gsm

Age:	3-4	5-6	7-8	9-10	11-12
Height (cm):	104	116	128	140	152
Chest (to fit):	22/25	25/28	28/30	30/32	32/34



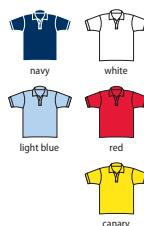
**K406 Kustom Kit**  
**Kids Klassic Poly/Cotton Piqué Polo Shirt**

65% polyester/35% cotton.  
1x1 ribbed flat knit collar and cuffs. Taped neck. Three self colour button placket. Taped shoulder seams. Half moon yoke. Side vents.  
Twin needle stitching. Superwash® 60°C. Can be tumble dried.

Weight: 180 gsm

Age:	3-4	5-6	7-8	9-10	11-12	13-14*
Chest (to fit):	22	24	26	28	30	32/34

\*13-14 subject to VAT.



**Sedex®**

**SS45B Fruit of the Loom**  
**Kids Long Sleeve Poly/Cotton Piqué Polo Shirt**

65% polyester/35% cotton. Easy care fabric. Ribbed collar and cuffs with elastane. Taped neck. Two self colour button placket. Reinforced shoulder seams. Twin needle hem. Cut out label. 60°C wash.

Weight: White 170 gsm, Cols 180 gsm

Age:	3-4	5-6	7-8	9-11	12-13	14-15*
Height (cm):	104	116	128	140	152	164
Chest (to fit):	22/24	26/28	30	32	34	36

\*14-15 subject to VAT.



**K406**

**KUSTOM KIT®**



K403 P163



K703 P175



**SS45B [632010]**

**FRUIT OF THE LOOM®**



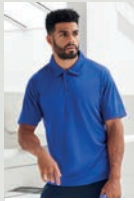
SS24 P201



# 650 POLYESTER POLO SHIRTS

JC040B

**JustCool®**  
AWDis



JC040 P171



JC045 P176



## JC040B AWDIs Kids Cool Polo Shirt

100% polyester.  
Neoteric™ textured fabric with inherent wickability.  
UPF 40+ UV protection.  
Self fabric collar.  
Self fabric taped neck.  
Two self colour button placket.  
Hemmed sleeves.  
Twin needle stitching.  
Tear out label.

Weight: 140 gsm

Size:	XS	S	M	L	XL
Age:	3-4	5-6	7-8	9-11	12-13
Chest (to fit):	26	28	30	32	34



LV372

**FINDEN +HALES**



LV370 P181

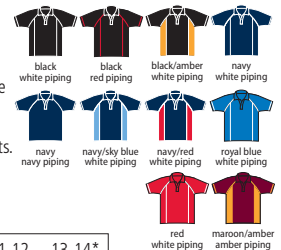


LV371 P177



## LV372 Finden & Hales Kids Performance Piped Polo Shirt

100% polyester Coolplus® piqué.  
Coolplus® modified polyester fibre draws moisture away from skin to keep cooler and dry. Self fabric collar. Two self colour button placket. Contrast piping to raglan sleeves, sides and cuffs. Side vents. Twin needle hem. 60°C wash.



Weight: 200 gsm

Age:	5-6	7-8	9-10	11-12	13-14*
Height (cm):	110/116	122/128	134/140	146/152	164
Chest (to fit):	24/26	26/28	28/30	30/32	32/34

\*13-14 subject to VAT.

**Coolplus®**

## LV382 Finden & Hales Kids Contrast Panel Piqué Polo Shirt

98% polyester/2% elastane micro piqué.  
Moisture wicking finish. Ribbed collar and cuffs. Taped neck. Two self colour button narrow placket. Contrast shoulder and sleeve panels. Twin needle hem. Tear out label.



Weight: 180 gsm

Age:	5-6	7-8	9-10	11-12	13
Height (cm):	110/116	122/128	134/140	146/152	164
Chest (to fit):	24/26	26/28	28/30	30/32	32/34

**Tear Out**

LV382

**FINDEN +HALES**



LV381 P181



**GD01B [64000B]**

**GILDAN®**  
Softstyle®



GD01 P71



GD72 P131

## GD01B Gildan Kids SoftStyle® Ringspun T-Shirt

100% ringspun cotton.\*  
Seamless twin needle collar.  
Taped neck and shoulders.  
Side seams 3 to 6 years.  
Tubular body 7 to 14 years.  
Twin needle sleeves and hem.  
Tear out label.

Weight: White 144 gsm, Cols 153 gsm

Age:	3-4	5-6	7-8	9-11	12-14**
Chest (to fit):	26	28	30	32	34

\*Sport grey 90% ringspun cotton/10% polyester.  
\*\*12-14 subject to VAT.



Sedex®



**11970**

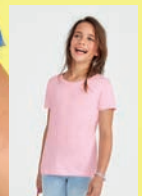
**SOL'S®**  
the fair spirit



11380 P72



01825 P130



11981 Online



## SS621B Fruit of the Loom Kids Iconic 150 T-Shirt

100% ringspun combed cotton.\*  
Soft touch. Fashion fit. 1x1 ribbed collar.  
Taped neck. Tubular body. Twin needle sleeves and hem. Tear out label.

Weight: White 140 gsm, Cols 145-150 gsm

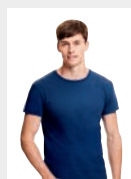
Age:	3-4	5-6	7-8
Height (cm):	104	116	128
Chest (to fit):	22/24	26/28	30
Age:	9-11	12-13	14-15*
Height (cm):	140	152	164
Chest (to fit):	32	34	36



\*Heather grey 97% cotton/3% polyester.  
\*\*All other heathers 52% cotton/48% polyester.  
\*14-15 subject to VAT.



**SS621B [610230]**



SS621 P71



SS721B Online



SS721 P131

## 11970 SOL'S Kids Regent T-Shirt

100% ringspun semi-combed cotton.\*  
Ribbed collar. Taped neck.  
Side seams 2 to 4 years.  
Tubular body 6 to 12 years.  
Twin needle stitching.  
This item runs small in comparison to some other brands. Please check sizing before decoration.

Weight: 150 gsm

Age:	2	4	6
Height (cm):	86-94	96-104	106-116
Age:	8	10	12
Height (cm):	118-128	130-140	142-152

\*Grey marl 85% cotton/15% viscose.  
\*\*Ash 98% cotton/2% viscose.



# 652 T-SHIRTS

**SS12B** [610190]



SS12 P73



SS712 P130

**NX3310**

**NL** | **NEXT LEVEL**  
APPAREL



NX3600 P74



NX3900 P132



## NX3310 Next Level Kids Crew Neck T-Shirt

100% ringspun combed cotton.\*  
1x1 baby ribbed collar.  
Taped neck and shoulders.  
Side seams. Twin needle sleeves  
and hem. Tear out label.

Weight: 145 gsm

<b>Size:</b>	XS	S	M	L	XL
<b>Age:</b>	4-5	6-7	8	10-12	14-16**

\*Heather grey 90% ringspun combed cotton/10% polyester.

\*\*14-16 subject to VAT.



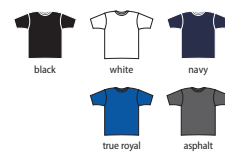
## CV3001Y Bella+Canvas Youths Crew Neck T-Shirt

100% airmesh combed ringspun cotton.  
Retail fit. Single jersey. Ribbed collar.  
Shoulder to shoulder taping.  
Side seams. Twin needle stitching.

Weight: 145 gsm

<b>Size:</b>	S	M	L	XL
<b>Age:</b>	6-8	8-10	10-12	12-14*

\*12-14 subject to VAT.



**CV3001Y**

**BELLA+CANVAS**



CV3001 P75



BL6004 P132



## SS12B Fruit of the Loom Kids Original T-Shirt

100% cotton.\*  
Ribbed collar.  
Taped neck.  
Tubular body.  
Twin needle stitching.  
Cut out label.

Weight: White 140 gsm, Cols 145 gsm

<b>Age:</b>	3-4	5-6	7-8	9-11	12-13	14-15**
<b>Height (cm):</b>	104	116	128	140	152	164
<b>Chest (to fit):</b>	22/24	26/28	30	32	34	36

\*Heather grey 97% cotton/3% polyester.

\*\*14-15 subject to VAT.



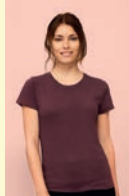


01183

**SOL'S**  
the fair spirit



10553 P92



02758 Online

## 01183 SOL'S Kids Regent Fit T-Shirt

100% ringspun semi-combed cotton.\*  
Elastane ribbed collar. Taped neck. Twin  
needle stitching. Unbranded size label at  
neckline. This item runs small in comparison  
to some other brands. Please check sizing  
before decoration.

Weight: 150 gsm

Age:	2	4	6
Height (cm):	86-94	96-104	106-116
Age:	8	10	12
Height (cm):	118-128	130-140	142-152

\*Grey marl 85% cotton/15% viscose.

\*\*Charcoal marl and heathers 60% cotton/40% polyester.

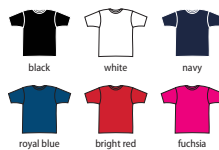


## SM121 SF Minni Kids Feel Good Stretch T-Shirt

96% cotton/4% elastane single jersey.  
Stretch fabric for a modern fit. Soft feel. Enzyme washed.  
Taped neck. Soft stretchy ribbed collar. Longer length.  
Twin needle sleeves and hem. Tear out label.

Weight: 165 gsm

Age:	3-4	5-6	7-8	9-10	11-12
Height (cm):	104	116	128	140	152
Chest (to fit):	22	24	26	28	30.5



SM121



SF121 P93



SK121 P133



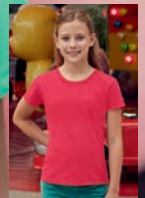
SS6B [610330]



SS6 P73



SS77 P133



SS77B Online

## SS6B Fruit of the Loom Kids Value T-Shirt

100% cotton.\*  
Cotton/Lycra® ribbed collar.  
Taped neck.  
Tubular knit for shape retention.  
Ages 1-2 and 2-3 have side seams.  
Twin needle stitching.  
Cut out label.

Weight: White 160 gsm, Cols 165 gsm

Age:	1-2▲	2-3▲	3-4	5-6
Height (cm):	92	98	104	116
Chest (to fit):	18/20	20/22	22/24	26/28
Age:	7-8	9-11	12-13	14-15■
Height (cm):	128	140	152	164
Chest (to fit):	30	32	34	36

\*Heather grey 97% cotton/3% polyester.

\*\*All other heathers 50% cotton/50% polyester.

▲Available in age 1-2 and 2-3.

■14-15 subject to VAT.



EA001B

écologie.  
by AWD is



EA001 P81



EA001F P135



## EA001B Ecologie Kids Cascades Organic T-Shirt

100% organic cotton.  
Single jersey. Fashion fit. Ribbed collar.  
Taped neck. Side seams.  
Twin needle sleeves and hem.  
Unbranded size label at neckline.

Weight: 150 gsm

Size:	XXS	XS	S	M	L	XL
Age:	1-2	3-4	5-6	7-8	9-11	12-13
Chest (to fit):	24	26	28	30	32	34



NEW APPROVED VEGAN

Sedex



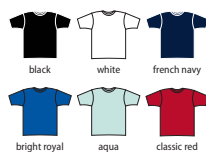
## 108B Russell Kids Pure Organic T-Shirt

100% certified organic ringspun combed cotton.  
Narrow ribbed collar with Lycra®.  
Taped neck and shoulders.  
Side seams.  
Twin needle sleeves and hem.  
Unbranded size label at neckline.

Weight: 160 gsm

Age:	3-4	5-6	7-8	9-10	11-12	13-14*
Height (cm):	104	116	128	140	152	164
Chest (to fit):	22/25	25/28	28/30	30/32	32/34	34/36

\*13-14 subject to VAT.



108B

pure organic  
russell



108M P82



108F P134



RTP®  
APPAREL •

03256

## 03256 RTP Apparel Kids Tempo 145 Organic T-Shirt

100% OCS certified organic ringspun semi-combed cotton.\*  
This style can only be ordered in packs of 10 or cartons of 50. Singles cannot be ordered.  
Packs and cartons are non-returnable.  
Pre-treated front body area ready for DTG - requires gentle handling (do not rub or stretch).  
Enzyme washed. Modern fit. Ribbed collar.  
Taped neck. Side seams. Twin needle stitching.  
Unbranded size label at neckline. To be stored in a dust-free environment, in temperatures lower than 30°C. Please note - this item runs small in comparison to some other brands.  
Available in mens 03254 and ladies 03255.

Weight: 145 gsm

Age:	4	6	8	10	12
Height (cm):	96-104	106-116	118-128	130-140	142-152
Chest (to fit):	20/21	22/23	24/25	26/28	29/30
Print area (cm):	22 x 19	25 x 21	28 x 23	32 x 25	35 x 26

Decoration for illustration purposes only. \*Grey melange 85% cotton/15% viscose.



03261

RTP®  
APPAREL •

## 03261 RTP Apparel Kids Cosmic 155 Organic T-Shirt

100% OCS certified organic combed ringspun cotton.\*  
This style can only be ordered in packs of 5 or cartons of 50. Singles cannot be ordered.  
Packs and cartons are non-returnable.  
Pre-treated front body area ready for DTG - requires gentle handling (do not rub or stretch).  
Enzyme washed. Modern fit. Ribbed collar.  
Taped neck. Side seams. Twin needle stitching.  
Unbranded size label at neckline. To be stored in a dust-free environment, in temperatures lower than 30°C. Please note - this item runs small in comparison to some other brands.  
Available in mens 03259 and ladies 03260.

Weight: 155 gsm

Age:	4	6	8	10	12
Height (cm):	96-104	106-116	118-128	130-140	142-152
Chest (to fit):	20/21	22/23	24/25	26/28	29/30
Print area (cm):	22 x 19	25 x 21	28 x 23	32 x 25	35 x 26

Decoration for illustration purposes only. \*Grey melange 85% cotton/15% viscose.



03258

RTP®  
APPAREL •

## 03258 RTP Apparel Kids Tempo 185 Organic T-Shirt

100% OCS certified organic ringspun cotton.\*  
This style can only be ordered in packs of 10 or cartons of 50. Singles cannot be ordered.  
Packs and cartons are non-returnable. Pre-treated front body area ready for DTG - requires gentle handling (do not rub or stretch). Enzyme washed. Modern fit. Ribbed collar. Taped neck. Side seams. Twin needle stitching. Unbranded size label at neckline. To be stored in a dust-free environment, in temperatures lower than 30°C. Please note - this item runs small in comparison to some other brands.  
Available in mens 03270 and ladies 03257.

Weight: 185 gsm

Age:	4	6	8	10	12
Height (cm):	96-104	106-116	118-128	130-140	142-152
Chest (to fit):	20/21	22/23	24/25	26/28	29/30
Print area (cm):	22 x 19	25 x 21	28 x 23	32 x 25	35 x 26

Decoration for illustration purposes only. \*Grey melange 85% cotton/15% viscose.





180B



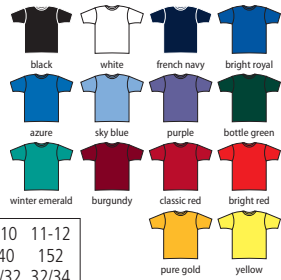
180M P86

## 180B Jerzees Schoolgear Kids Classic Ringspun T-Shirt

100% ringspun cotton.  
Shoulder to shoulder taping.  
Front cover seaming on collar.  
Tubular body.  
Twin needle sleeves and hem.

Weight: White 175 gsm, Cols 180 gsm

Age:	1-2	3-4	5-6	7-8	9-10	11-12
Height (cm):	90	104	116	128	140	152
Chest (to fit):	20/22	22/25	25/28	28/30	30/32	32/34



## 11770 SOL'S Kids Imperial Heavy T-Shirt

100% ringspun semi-combed cotton.\*  
Ribbed collar. Taped neck. Side seams 2 to 6 years.  
Tubular body 8 to 12 years. Twin needle stitching.  
This item runs small in comparison to some other brands. Please check sizing before decoration.

Weight: 190 gsm

Age:	2	4	6
Height (cm):	86-94	96-104	106-116
Age:	8	10	12
Height (cm):	118-128	130-140	142-152

\*Heather grey 85% cotton/15% viscose.



**SOL'S**  
the fair spirit



11500 P87

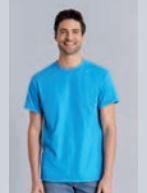


11502 P137



GD05B [5000B]

**GILDAN**  
Heavy Cotton™



GD05 P85



GD95 P136



GD05P Online

## GD05B Gildan Kids Heavy Cotton™ T-Shirt

100% cotton.\*  
Seamless twin needle collar.  
Taped neck and shoulders.  
Tubular body.  
Twin needle sleeves and hem.  
Tear out label.

Weight: White 170 gsm, Cols 180 gsm

Age:	3-4	5-6	7-8	9-11	12-13
Chest (to fit):	30	32	34	36	38

\*Ash 99% cotton/1% polyester.  
\*\*Sport grey 90% cotton/10% polyester.  
▲Graphite heather 50% cotton/50% polyester.



Sedex



Tear Out

# 656 T-SHIRTS

**NX3312**

**NL** | **NEXT LEVEL**  
APPAREL



NX6210 P96



NX6610 P145



## **NX3312** Next Level Kids CVC Crew Neck T-Shirt

60% ringspun combed cotton/40% polyester.  
1x1 baby ribbed collar. Taped neck and  
shoulders. Side seams. Twin needle sleeves  
and hem. Tear out label.

Weight: 145 gsm

Size:	XS	S	M	L	XL
Age:	4-5	6-7	8	10-12	14-16*

\*14-16 subject to VAT.



Tear  
Out

**CV3413Y**

**BELLA+CANVAS.**



CV3413 P101



BL8413 P144



## **CV3413Y** Bella+Canvas Youths Tri-Blend T-Shirt

50% polyester/25% airlume combed ringspun  
cotton/25% rayon.  
Retail fit. Ribbed collar. Shoulder to shoulder taping.  
Side seams. Twin needle sleeves and hem.  
Tear out label.

Weight: 130 gsm

Size:	S	M	L
Age:	6-8	8-10	10-12



Tear  
Out

## **01400** SOL'S Kids Miles Striped T-Shirt

100% ringspun combed cotton.\*  
Self fabric neckline. Taped neck. Twin needle sleeves. Unbranded size label at neckline.  
This item runs small in comparison to some other brands. Please check sizing before decoration.

Weight: 150 gsm

Age:	4	6	8	10	12	14**
Height (cm):	96-104	106-116	118-128	130-140	142-152	154-164

\*Ash/lemon 98% cotton/2% viscose.

\*\*14 subject to VAT.



No Label

## **SM202** SF Minni Kids Striped T-Shirt

100% cotton.  
Single jersey. Regular fit. Stretch ribbed collar.  
Taped neck. Twin needle stitching.  
Tear out label.

Weight: 160 gsm

Age:	5-6	7-8	9-10	11-12
Height (cm):	116	128	140	152
Chest (to fit):	24	26	28	30.5



**Sedex**

Tear  
Out

**01400**

**SOL'S**  
the fair spirit



01398 P111



01399 P149

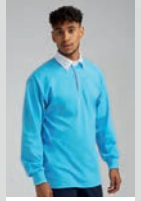


**SM202**



SF202 P111



**FR109**
**FRONT ROW & CO**  
HERITAGE CLOTHING


FR100 P244



FR101 P244


**FR109 Front Row Kids Classic Rugby Shirt**

100% cotton single jersey.  
Traditional woven rugby collar with cotton webbing.  
Elastane ribbed cuffs.  
Side vents.  
Twin needle hem.  
For leisure use only.



Weight: 270 gsm



Age:	5-6	7-8	9-10	11-13
Height (cm):	116	128	140	158
Chest (to fit):	24/26	26/28	28/30	30/32

**SS21B [610070]**


SS21 P113



SS708 P150

**SS21B Fruit of the Loom Kids Long Sleeve Value T-Shirt**

100% cotton.\*  
Cotton/Lycra® ribbed collar and cuffs.  
Taped neck. Tubular knit. Twin needle hem.  
Cut out label.



Weight: White 160 gsm, Cols 165 gsm

Age:	3-4	5-6	7-8	9-11	12-13	14-15▲
Height (cm):	104	116	128	140	152	164
Chest (to fit):	22/24	26/28	30	32	34	36



\*Heather grey 97% cotton/3% polyester.  
\*\*Dark heather 50% cotton/50% polyester.  
▲14-15 subject to VAT.

**SM271 SF Minni Kids Long Sleeve Baseball T-Shirt**

100% cotton.\*  
Single jersey. Contrast ribbed collar.  
Taped back neck. Contrast raglan sleeves.  
Longer length. Twin needle curved hem. Tear out label.



Weight: 140 gsm

Age:	5-6	7-8	9-10	11-12
Height (cm):	116	128	140	152
Chest (to fit):	24	26	28	30.5

**Sedex**


\*Heather grey 85% cotton/15% viscose.

**SM271**


SF271 P122



SK271 P153

**CV3200Y**
**BELLA+CANVAS**


CV3200 P123



CV3200T P682


**CV3200Y Bella+Canvas Youths 3/4 Sleeve Baseball T-Shirt**

52% airlume combed ringspun cotton/48% polyester.\*  
Generous fit. Contrast collar. Contrast raglan sleeves.  
Side seams. Tear out label.



Weight: 130 gsm

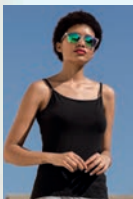
Size:	S	M	L
Age:	6-8	8-10	10-12

\*Tri-blends 50% polyester/25% cotton/25% rayon.



# 658 VESTS & CROP TOPS

SM126



SK126 P154



## SM126 SF Minni Kids Feel Good Stretch Spaghetti Vest

96% polyester/4% elastane.  
Single jersey. Enzyme washed.  
Bound neckline and armholes.  
Adjustable spaghetti straps.  
Side seams.  
Twin needle hem.  
Tear out label.

Weight: 165 gsm

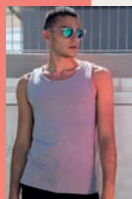
Age:	5-6	7-8	9-10	11-12
Height (cm):	116	128	140	152
Chest (to fit):	24	26	28	30.5



Sedex

Tear Out

SM123



SF123 Online



SK123 P155



## SM123 SF Minni Kids Feel Good Stretch Vest

96% cotton/4% elastane.  
Single jersey. Enzyme washed.  
Self fabric bound neckline and armholes.  
Side seams. Longer length. Twin needle hem. Tear out label.

Weight: 165 gsm

Age:	5-6	7-8	9-10	11-12
Height (cm):	116	128	140	152
Chest (to fit):	24	26	28	30.5



Sedex

Tear Out

## SM16 SF Minni Kids Tank Vest

100% cotton interlock.  
Wide bound neckline and armholes.  
Straight hem.  
Twin needle seams.

Weight: 220 gsm

Age:	4-6	7-9	10-12
Height (cm):	104-116	122-134	140-152
Chest (to fit):	22/24	25/27	29/31



Sedex

## SM236 SF Minni Kids Fashion Crop Top

96% polyester/4% elastane.  
Single jersey. Jacquard elasticated band. Twin needle stitching.  
White area suitable for sublimation printing.  
Tear out label.

Weight: 240 gsm

Age:	5-6	7-8	9-10	11-12
Height (cm):	116	128	140	152
Chest (to fit):	24	26	28	30.5



Sedex

Tear Out

SM16



SM236



SK236 P154



SM241



SK241 P496

## SM241 SF Minni Kids Fashion Workout Vest

90% polyester/10% elastane.  
Single jersey. Scoop neckline.  
Strappy back. Drop armholes and hem.  
Flatlock stitching. Tear out label.

Weight: 150 gsm

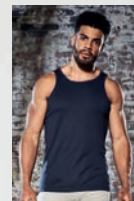
Age:	5-6	7-8	9-10	11-12
Height (cm):	116	128	140	152
Chest (to fit):	24	26	28	30.5



Tear Out

JC007B

JustCool<sup>®</sup>  
AWDis



JC007 P478



JC015 P495

## JC007B AWDIs Kids Cool Vest

100% polyester.  
Neoteric<sup>™</sup> textured fabric with inherent wickability.  
UPF 40+ UV protection. Self fabric bound neckline and armholes. Name label. Tear out label.

Weight: 140 gsm

Size:	XS	S	M	L	XL
Age:	3-4	5-6	7-8	9-11	12-13
Chest (to fit):	26	28	30	32	34



Sedex<sup>®</sup>

Tear Out



## TL697 Tombo Kids Seamless Crop Top

60% nylon/32% polyester/8% elastane.\*  
Racer back style.  
Self fabric bound neckline, armholes, and racer back.  
Self fabric mesh used for front straps, V insert and back panel.  
Removable padded cups (age 11-13 only).  
Ribbed hem.

Weight: 265 gsm

Age:	5-6	7-8	9-10	11-13
Height (cm):	116	128	140	158
Chest (to fit):	24/26	26/28	28/30	30/32



## TL322 Tombo Kids Seamless Fade Out Vest

60% nylon/32% polyester/8% elastane.  
Fitted high-stretch vest. Melange fabric with ombré fade out effect.  
Seamless knit. Racer back style. Self fabric bound neckline and armholes.  
Blind stitching at hem. Tear out label.

Weight: 250 gsm

Age:	5-6	7-8	9-10	11-13
Height (cm):	116	128	140	158
Chest (to fit):	24/26	26/28	28/30	30/32



Tear Out

TL697



TL696 P499

TL322

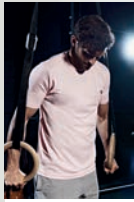


TL302 P497

# 660 PERFORMANCE T-SHIRTS

JC001B

**JustCool®**  
AWDis



JC001 P465



JC005 P491



## JC001B AWDIs Kids Cool T-Shirt

100% polyester.  
Relaxed fit. Neoteric™ textured fabric with inherent wickability. UPF 40+ UV protection.  
Self fabric collar. Taped neck.  
Twin needle stitching.  
Tear out label.

Weight: 140 gsm

Size:	XS	S	M	L	XL
Age:	3-4	5-6	7-8	9-11	12-13
Chest (to fit):	26	28	30	32	34

{ AW APPROVED } VEGAN

Sedex

Tear Out

WRAP

neoteric



## JC020B AWDIs Kids Cool Smooth T-Shirt

100% polyester.  
Relaxed fit. Neoteric™ smooth fabric with inherent wickability and quick drying properties. UPF 30+ UV protection.  
Self fabric collar. Taped neck.  
Twin needle stitching.  
Tear out label.

Weight: 135 gsm

Size:	XS	S	M	L	XL
Age:	3-4	5-6	7-8	9-11	12-13
Chest (to fit):	26	28	30	32	34

{ AW APPROVED } VEGAN

Sedex

WRAP

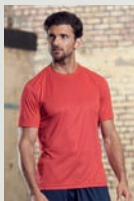
Tear Out

neoteric smooth



JC020B

**JustCool®**  
AWDis



JC020 P467



JC025 P491



SR287B

**SPIRO®**



SR287 P466

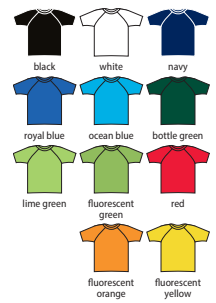


## SR287B Spiro Kids Impact Performance Aircool T-Shirt

100% textured polyester.  
Breathable, quick drying, high-tech stretch fabric.  
Comfort fit. Raglan sleeves.  
Topstitch shoulder and sleeve detail.  
Twin needle hem. Tag free.

Weight: 130 gsm

Size:	XS	S	M	L
Age:	3-4	5-6	7-8	9-10
Height (cm):	98-104	110-116	122-128	134-146



SPIRO  
IMPACT  
PERFORMANCE WEAR  
STRETCH  
EXCEPTIONAL ELASTICITY

No Label

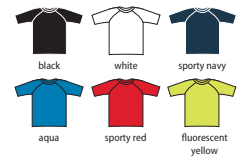
## PA4008 Proact Kids Surf T-Shirt

92% polyester/8% elastane.  
Quick drying stretch fabric.  
40+ UV protection.  
Self fabric high neck. Raglan sleeves.  
Elasticated tab on inside front hem to insert shorts drawcord and hold the t-shirt down.  
Contrast flatlock stitching.  
Twin needle cuffs and hem.

Weight: 160 gsm

Age:	6-8	8-10	10-12	12-14*
------	-----	------	-------	--------

\*12-14 subject to VAT.



PA4008

**PROACT.®**



PA4007 P469



JC003B

**JustCool**  
AWDis



JC003 P470

## JC003B AWDIs Kids Cool Contrast T-Shirt

100% polyester.  
Neoteric™ textured fabric with inherent wickability. UPF 40+ UV protection. Self fabric collar. Self fabric taped neck. Raglan sleeves. Contrast inserts on front and back sleeves. Twin needle stitching. Tear out label.

Weight: 140 gsm

Size:	XS	S	M	L	XL
Age:	3-4	5-6	7-8	9-11	12-13
Chest (to fit):	26	28	30	32	34



JC040B

**JustCool**  
AWDis



JC040 P473



JC045 P494

## JC040B AWDIs Kids Cool Polo Shirt

100% polyester.  
Neoteric™ textured fabric with inherent wickability. UPF 40+ UV protection. Self fabric collar. Self fabric taped neck. Two self colour button placket. Hemmed sleeves. Twin needle stitching. Tear out label.

Weight: 140 gsm

Size:	XS	S	M	L	XL
Age:	3-4	5-6	7-8	9-11	12-13
Chest (to fit):	26	28	30	32	34



## LV242 Finden & Hales Kids Performance Team T-Shirt

100% polyester.  
Wicking fabric keeps you dry and comfortable. Birds eye knit. Raglan sleeves. Contrast piping and panelling on underarms and sides. Twin needle hem.

Weight: 140 gsm

Age:	5-6	7-8	9-10	11-12	13-14*
Height (cm):	110/116	122/128	134/140	146/152	164
Chest (to fit):	24/26	26/28	28/30	30/32	32/34

\*13-14 subject to VAT.



## LV372 Finden & Hales Kids Performance Piped Polo Shirt

100% polyester Coolplus® piqué.  
Coolplus® modified polyester fibre draws moisture away from skin to keep cooler and dry. Self fabric collar. Two self colour button placket. Contrast piping to raglan sleeves, sides and cuffs. Side vents. Twin needle hem. 60°C wash.

Weight: 200 gsm

Age:	5-6	7-8	9-10	11-12	13-14*
Height (cm):	110/116	122/128	134/140	146/152	164
Chest (to fit):	24/26	26/28	28/30	30/32	32/34

\*13-14 subject to VAT.



LV242

**FINDEN +HALES**



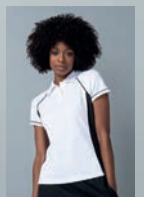
LV240 P471

LV372

**FINDEN +HALES**



LV372 P476



LV371 P495

# 662 SHORTS & SKORTS

JC080B



JC080 P511

**JustCool®**  
AWDis

## JC080B AWDIs Kids Cool Shorts

100% polyester.  
Neoteric™ textured fabric with inherent wickability. UPF 40+ UV protection.  
Elasticated waistband. Micro mesh lining.  
Inner coin pocket.  
Two side pockets.  
Tear out label.

Weight: 140 gsm

Age:	3-4	5-6	7-8	9-11	12-13
Waist (to fit):	17	18	20	22	23



jet black



arctic white



french navy



royal blue



fire red



## SM69 SF Minni Kids Retro Shorts

100% cotton.  
Elasticated waistband with chunky flat lace mock drawcord.  
Contrast white binding - black/black is self colour.  
Tear out label.

Weight: 220 gsm

Age:	5-6	7-8	9-10	11-12
Height (cm):	116	128	140	152
Waist (to fit):	22	23	24.5	26



black/black



black/white



navy/white



red/white



bright pink/white



SM69



SF69 Online SK69 P241

SS215B [640070]



## SS215B Fruit of the Loom Kids Performance Shorts

100% textured polyester.  
Moisture wicking with quick dry performance.  
Elasticated waistband with drawcord.  
Twin needle stitching.

Weight: 140 gsm

Age:	3-4	5-6	7-8
Height (cm):	104	116	128
Age:	9-11	12-13	14-15*
Height (cm):	140	152	164

\*14-15 subject to VAT.



black



deep navy



## SM62 SF Minni Girls Shorts

96% cotton/4% elastane.  
Single jersey.  
Wide elasticated waistband with mock drawcord.

Weight: 220 gsm

Age:	5-6	7-8	9-10	11-12
Height (cm):	116	128	140	152
Waist (to fit):	22	23	24.5	26



black



SM62



SK62 Online

SM427



SK427 P241



## SM427 SF Minni Kids Fashion Cycling Shorts

88% polyester/12% elastane.  
Single jersey.  
Brushed back soft jacquard waistband.  
Tear out label.

Weight: 280 gsm

Age:	5-6	7-8	9-10	11-12
Height (cm):	116	128	140	152
Waist (to fit):	22	23	24.5	26



black/black



## FINDEN+HALES

### LV834 Finden & Hales Girls Skort

100% polyester skirt. 88% polyester/12% elastane pants.  
Quick dry performance Coolpass base layer permanent wicking fabric.  
Lightweight and breathable.  
Integral sports pants with reversed seams for extra comfort.  
Inner key pocket.  
Hem vents.

Weight: Outer 140 gsm, Inner 170 gsm

Age:	5-6	7-8	9-10
Height (cm):	110/116	122/128	134/140
Waist (to fit):	22	23	24.5
Age:	11-12	13	
Height (cm):	146/152	164	
Waist (to fit):	26	27.5	



black



navy

CoolPass

LV834



LV833 P518



TL320



TL300 P516



## TL320 Tombo Kids Seamless Fade Out Leggings

60% nylon/32% polyester/8% elastane.  
Fitted high-stretch leggings.  
Melange fabric with ombré fade out effect.  
Seamless knit.  
Grown on elasticated waistband.  
Blind stitched hems.  
Tear out label.

Weight: 250 gsm

Age:	5-6	7-8	9-10	11-13
Height (cm):	116	128	140	158
Waist (to fit):	22	23	24	26



dark grey/  
light grey marl

purple/  
light grey marl



Tear Out



SM64



## SM64 SF Minni Kids Leggings

96% cotton/4% elastane.  
Single jersey. Elasticated waistband.  
Shaped to fit.  
Twin needle stitching.  
Tear out label.

Weight: 190 gsm

Age:	3-4	5-6	7-8	9-10	11-12
Height (cm):	104	116	128	140	152
Waist (to fit):	21	22	23	24.5	26



black

Sedex

Tear Out



SK64 P240



SR261B



SR261F P519



## SR261B Spiro Junior Skort

100% polyester skirt.  
95% cotton/5% elastane pants.  
Integral sports pants.  
Quick drying, lightweight and breathable.  
Flatlock stitched side seams.  
Flat elasticated waistband.  
Hem vent.

Weight: 210 gsm

Age:	5-6	7-8	9-10	11-12
Waist (to fit):	22	24	26	28



black



navy

JustCool®  
AWDis

## JC087B AWDIs Kids Cool Athletic Pants

87% polyester/13% elastane. CoolFit™ matt finish performance fabric with superior wicking properties. UPF 40+ UV protection. Elasticated smooth waistband. Flatlock stitched seams. Tear out label.

Weight: 280 gsm

Age:	3-4	5-6	7-8	9-11	12-13
Waist (to fit):	19	20	22	24	25

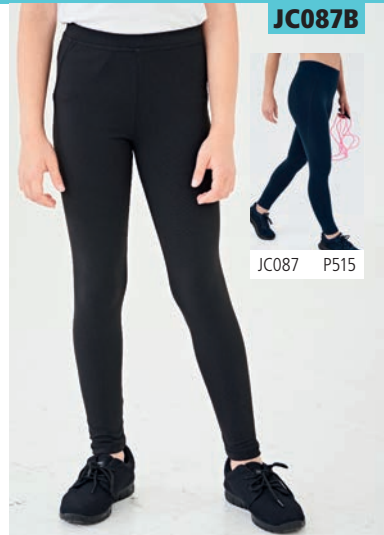


jet black

AN APPROVED  
VEGAN



Tear Out



JC087B



JC087 P515



## TL673 Tombo Kids Panelled Leggings

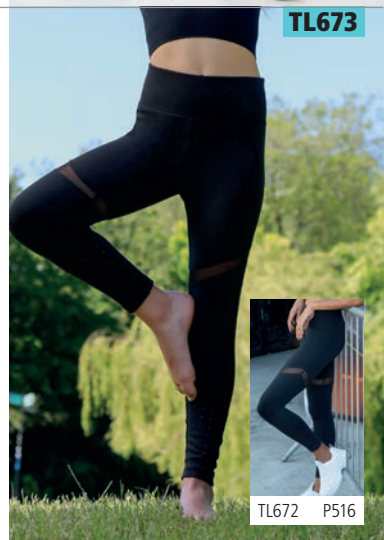
87% polyester/13% elastane.  
Opaque stretch fabric.  
Deep elasticated waistband with inner pocket.  
Mesh panels on thighs, front and back.  
Laser cut panels on lower legs.

Weight: 280 gsm

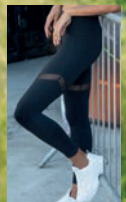
Age:	5-6	7-8	9-10	11-13
Height (cm):	116	128	140	158
Waist (to fit):	22	23	24	26



black



TL673



TL672 P516



## SM426 SF Minni Kids Fashion Leggings

88% polyester/12% elastane.  
Single jersey. Brushed back soft jacquard waistband. Waistband suitable for sublimation printing. Tear out label.

Weight: 280 gsm

Age:	5-6	7-8	9-10	11-12
Height (cm):	116	128	140	152
Waist (to fit):	22	23	24.5	26



black/white

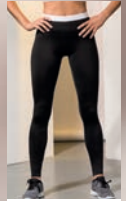
Tear Out



black/white



SM426



SK426 P240

JustCool®  
AWDis

## JC086B AWDIs Girls Cool Capri Pants

87% polyester/13% elastane.  
CoolFit™ matt finish performance fabric with superior wicking properties. UPF 40+ UV protection. 3/4 length. Elasticated smooth waistband. Hidden pocket in the front. Name label. Flatlock stitched seams. Tear out label.

Weight: 280 gsm

Age:	3-4	5-6	7-8
Waist (to fit):	19	20	22
Age:	9-11	12-13	
Waist (to fit):	24	25	



jet black



JC086B



JC086 P517

TL47B



TL47 P510

## TL47B Tombo Kids Cuffed Track Pants

100% polyester microfibre with peached finish.  
Mesh lining with polyester lower leg lining.  
Elasticated waistband with inner drawcord.  
Two side pockets, right with zip.  
Elasticated leg ends with ankle zips.

Age:	5-6	7-8	9-10	11-13
Height (cm):	116	128	140	158
Waist (to fit):	22	23	24	26



black



navy

## TL582 Tombo Kids Slim Leg Training Pants

100% polyester piqué.  
Slim fit.  
Elasticated waistband.  
Two side zip pockets.  
Open leg ends with zips.  
Tear out label.

Age:	5-6	7-8	9-10	11-13
Height (cm):	116	128	140	158
Waist (to fit):	22	23	24	26



black



navy

Tear Out

TL582



TL580 P508



TL581 P518

LV873

FINDEN +HALES



LV871 P507

## LV873 Finden & Hales Kids Knitted Tracksuit Top

100% polyester interlock. Funnel neck. Full length contrast zip. Contrast outer sleeve panels. Two front zip pockets. Semi-automatic lock zip sliders on all zips. 1x1 ribbed cuffs.

Age:	5-6	7-8	9-10	11-12	13
Height (cm):	110/116	122/128	134/140	146/152	164
Chest (to fit):	24/26	26/28	28/30	30/32	32/34



black



black/white



black/gunmetal



black/red



navy



navy/white



navy/royal blue

## LV883 Finden & Hales Kids Knitted Tracksuit Pants

100% polyester interlock.  
Slim leg. Elasticated waistband. Two side zip pockets.  
Contrast side panels. Ankle zips with zip guard and semi-automatic lock zip sliders.

Age:	5-6	7-8	9-10	11-12	13
Height (cm):	110/116	122/128	134/140	146/152	164
Waist (to fit):	22	23	24.5	26	27.5



black



black/white



black/gunmetal



black/red



navy



navy/white



navy/royal blue

LV883

FINDEN +HALES



LV881 P507



90210

**SOL'S**  
the fair spirit

**90210 SOL'S  
Anfield Bib**

100% polyester mesh.  
Self fabric bound neckline and armholes.  
Twin needle hem.

Weight: 80 gsm

Size: XS M XL



royal blue bright green red orange lemon



10604

**SOL'S**  
the fair spirit

**10604 SOL'S  
Soccer Socks**

80% polyester/15% cotton/5% spandex.  
Knee length with ribbed opening.  
Branding on top of foot.

Size: XS/S S/M M/L  
Childrens size (fits): 12 - 2.5 3.5 - 6  
Adult size (fits): 6.5 - 10



black white french navy royal blue bright green red lemon



TL809B



**TOMBO**

**TL809B Tombo  
Kids Active Track Shorts**

100% polyester microfibre.  
Unbranded, size tab only in waist.  
Elasticated waistband with inner drawcord.  
Mesh lining inner shorts.  
Two side pockets.

Age:	5-6	7-8	9-10	11-13
Height (cm):	116	128	140	158
Waist (to fit):	22	23	24	26



black navy



No Label

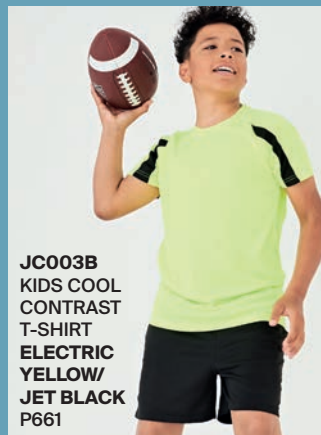
TL800 P511

**JustCool**  
AWDis



**JC001B  
KIDS COOL  
T-SHIRT  
SKY BLUE  
P660**

**JC087B  
KIDS COOL  
ATHLETIC  
PANTS  
JET BLACK  
P663**



**JC003B  
KIDS COOL  
CONTRAST  
T-SHIRT  
ELECTRIC  
YELLOW/  
JET BLACK  
P661**



**JC007B  
KIDS COOL  
VEST  
ROYAL  
BLUE  
P659**



**JC040B  
KIDS COOL  
POLO SHIRT  
BOTTLE  
GREEN  
P661**



**JC020B  
KIDS COOL  
SMOOTH  
T-SHIRT  
HOT PINK  
P660**

**JC080B  
KIDS COOL  
SHORTS  
JET BLACK  
P662**

{ PETA-APPROVED }  
VEGAN

PERFORM YOUR BEST

CHILDREN

01719



01717 P522

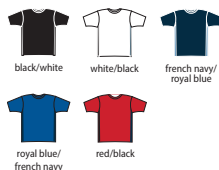
**SOL'S**  
the fair spirit

## 01719 SOL'S Kids Classico Contrast T-Shirt

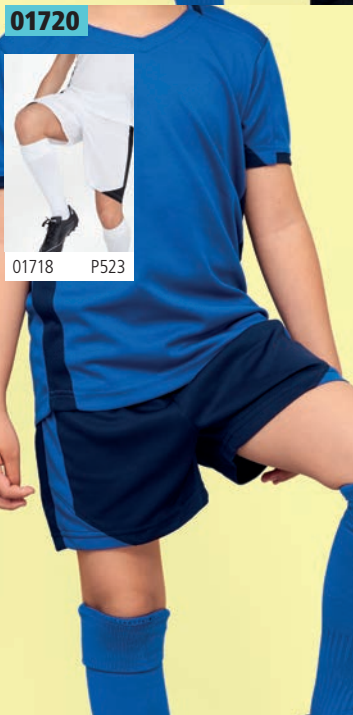
100% polyester.  
Breathable polyester mesh. V neckline with contrast trim. Forward shoulder seams. Contrast mesh side panels. Twin needle stitching. This item runs small in comparison to some other brands. Please check sizing before decoration.

Weight: 150 gsm

Age:	6	8
Height (cm):	106-116	118-128
Age:	10	12
Height (cm):	130-140	142-152



01720



01718 P523

**SOL'S**  
the fair spirit

## 01720 SOL'S Kids Olimpico Shorts

100% polyester.  
Breathable polyester mesh. Elasticated waistband with contrast drawcord. Contrast mesh side panels. Twin needle stitching. This item runs small in comparison to some other brands. Please check sizing before decoration.

Weight: 150 gsm

Age:	6	8
Height (cm):	106-116	118-128
Age:	10	12
Height (cm):	130-140	142-152



01222



01221 P523

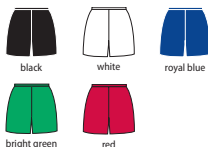
**SOL'S**  
the fair spirit

## 01222 SOL'S Kids San Siro 2 Shorts

100% polyester.  
Elasticated waistband with drawcord. Reinforced seams. Suitable for sublimation printing. This item runs small in comparison to some other brands. Please check sizing before decoration.

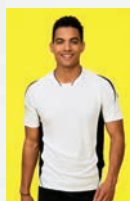
Weight: 140 gsm

Age:	6	8
Height (cm):	106-116	118-128
Age:	10	12
Height (cm):	130-140	142-152



01639

**SOL'S**  
the fair spirit



01638 P522



01639 SOL'S

## Kids Maracana 2 Contrast T-Shirt

100% polyester.  
Self fabric collar with contrast piping. Raglan sleeves. Contrast mesh inserts to sides and sleeves. Longer back panel. Twin needle stitching. Suitable for sublimation printing. This item runs small in comparison to some other brands. Please check sizing before decoration.

Weight: 140 gsm

Age:	6	8
Height (cm):	106-116	118-128
Age:	10	12
Height (cm):	130-140	142-152



90209 SOL'S

## Kids Azteca Goalkeeper Shirt

100% polyester interlock.  
Self fabric collar with contrast piping. Raglan sleeves. Contrast mesh inserts on sides and sleeves. Padded elbows and lower sleeves. Longer back panel. Ribbed cuffs. Printed neck label. Logo on right shoulder and sleeves/no logo (some colours in transition). Suitable for sublimation printing. This item runs small in comparison to some other brands. Please check sizing before decoration.

Weight: 140 gsm

Age:	6-8	10-12
Height (cm):	106-128	130-152



90209

**SOL'S**  
the fair spirit



90208 P522





**CN360B**



**CN360B Canterbury Kids ThermoReg Long Sleeve Base Layer**

95% polyester/5% spandex.  
ThermoReg moisture wicking fabric keeps you cool, dry and comfortable.  
Designed to be worn next to the skin.  
Self fabric neckline. Forward shoulder seams.  
Underarm ventilation gusset.  
Offset side seams. Twin needle sleeves and hem.  
Performance seams.  
Branding on centre chest and right sleeve.

Weight: 220 gsm

Size:	S	M	L*
Age:	6-8	10-12	14

\*14 subject to VAT.



THERMOREG



CN360 P481



**CN302B Canterbury Kids Evader Jersey**

100% polyester.  
Vapodri wicking technology.  
Pro athletic fit.  
Contrast loop elasticated collar.  
Contrast shoulders, sleeves and lower body inserts.  
Branding on right chest and left hem.

Weight: 250 gsm

Age:	6	8	10
Chest (to fit):	23/24	25/26	27/29
Age:	12	14*	
Chest (to fit):	30/32	32/34	

\*14 subject to VAT.



VAPODRI



**CN302B**



CN302 P524



**CN231B**



**CN231B Canterbury Kids Club Hoodie**

55% cotton/45% polyester.  
Drop shoulder style.  
Jersey lined hood.  
Forward facing shoulder seams.  
Front pouch pocket.  
Ribbed cuffs and hem.  
Branding on lower right sleeve.

Weight: 300 gsm

Age:	6	8	10
Chest (to fit):	23/24	25/26	27/29
Age:	12	14*	
Chest (to fit):	30/32	32/34	

\*14 subject to VAT.



**NEW**



CN231 P528



**CN303B Canterbury Kids Evader Hooped Jersey**

100% polyester.  
Vapodri wicking technology.  
Pro athletic fit.  
Sublimated hoop detail on front.  
Solid colour shoulders, sleeves, back and lower body inserts.  
Branding on right chest and left hem.

Weight: 250 gsm

Age:	6	8	10
Chest (to fit):	23/24	25/26	27/29
Age:	12	14*	
Chest (to fit):	30/32	32/34	

\*14 subject to VAT.



VAPODRI



**CN303B**



CN303 P524



**CN217B**



**CN217B Canterbury Kids Club Contact Top**

Micro-diamond ripstop polyester.  
Lightweight mesh lining.  
Vaposhield shower resistant finish.  
Stretch ribbed collar with V detail.  
Forward facing shoulder seams.  
Offset side seams.  
Elasticated cuffs.  
Folded elasticated hem.  
Branding on right chest and lower left hem.

Age:	6	8	10
Chest (to fit):	23/24	25/26	27/29
Age:	12	14*	
Chest (to fit):	30/32	32/34	

\*14 subject to VAT.



VAPOSHIELD

**NEW**



CN217 P527



**CN268B Canterbury Kids Club Rain Jacket**

Micro-diamond ripstop polyester.  
Lightweight mesh lining.  
Vaposhield shower resistant finish.  
Concealed hood.  
Full length zip with chin guard and inner zip guard.  
Forward facing shoulder seams.  
Two front zip pockets.  
Elasticated cuffs.  
Drawcord hem.  
Branding on right chest and lower left hem.

Age:	6	8	10
Chest (to fit):	23/24	25/26	27/29
Age:	12	14*	
Chest (to fit):	30/32	32/34	

\*14 subject to VAT.



VAPOSHIELD

**NEW**



**CN268B**



CN268 P527

## CN251B



CN251 P510



### CN251B Canterbury Kids Cuffed Stadium Pants

100% polyester.  
Polyester/cotton 3/4 lining with nylon lower leg lining.  
Elasticated waistband with inner drawcord.  
Two side zip pockets. Full length leg side zips.  
Elasticated cuffed leg ends.  
Branding on right thigh.

Age:	6	8	10	12	14*
Waist (to fit):	22/23	23/24	24/26	26/28	28/29

\*14 subject to VAT.



### CN250B Canterbury Kids Open Hem Stadium Pants

100% polyester.  
Polyester/cotton 3/4 lining with nylon lower leg lining.  
Elasticated waistband with inner drawcord.  
Two side zip pockets. Full length leg side zips.  
Open leg ends with tab adjusters.  
Branding on right leg.

Age:	6	8	10	12	14*
Waist (to fit):	22/23	23/24	24/26	26/28	28/29

\*14 subject to VAT.



## CN250B



CN250 P510



CN250F P518



### CN310B Canterbury Kids Professional Shorts

100% polyester twill.  
Elasticated waistband with drawcord.  
Sewn in front crease.  
Reinforced stitching.  
Two side pockets reinforced with double bar tacks.  
Branding on right hem.

Weight: 230 gsm

Age:	6	8	10
Waist (to fit):	22/23	23/24	24/26
Age:	12	14*	
Waist (to fit):	26/28	28/29	

\*14 subject to VAT.



## CN310B



CN310 P524



### CN155B Canterbury Kids Cricket Shirt

100% polyester.  
Vapodri wicking technology.  
Self fabric collar.  
Taped neck.  
Three button placket.  
Panel detail down sides and underarms.  
Curved drop hem.  
Twin needle stitching.  
Branding on right chest.

Weight: 130 gsm

Age:	6	8	10
Chest (to fit):	23/24	25/26	27/29
Age:	12	14*	
Chest (to fit):	30/32	32/34	

\*14 subject to VAT.



VAPODRI

## CN155B



CN155 Online



### CN156B Canterbury Kids Cricket Pants

100% polyester piqué.  
Elasticated waistband with inner drawcord.  
Sewn in front crease.  
Two side pockets.  
Twin needle hem.  
Branding on right thigh.

Weight: 250 gsm

Age:	6	8	10
Waist (to fit):	22/23	23/24	24/26
Age:	12	14*	
Waist (to fit):	26/28	28/29	

\*14 subject to VAT.



## CN156B



CN156 Online



RS36B

Result



RS36 P435

### RS36B Result Kids/Youths Polartherm™ Fleece Jacket

100% polyester.  
Pill resistant. Unlined. Collar high full length zip. Two large front pockets. Elasticated cuffs. Reflective triangle front and back. Adjustable drawcord at hem - EN14682 compliant. Cut out label.

Weight: 330 gsm

Age:	3-4	4-6	6-8	8-10	10-12	12-14*
Height (cm):	104	116	128	140	152	164
Chest (to fit):	21/22	22/24	24/26	26/29	29/31	31/34

\*12-14 subject to VAT.



### RG258 Regatta Kids Brigade II Micro Fleece Jacket

100% polyester 170 series Layerlite® micro fleece.  
Quick drying with wicking performance. Full length zip with chin guard. Two front pockets. Open cuffs and hem.

Weight: 170 gsm

Age:	2	3-4	5-6	7-8	9-10	11-12	-	-
Chest (to fit):	-	-	-	-	-	32	34*	
Height (cm):	98	104	116	128	140	152	158	164

\*34 subject to VAT.



RG258 [TRF515]

JUNIOR REGATTA PROFESSIONAL



870B

R  
russell

870M P434



870F P445

### 870B Jerzees Schoolgear Kids Outdoor Fleece Jacket

100% polyester.  
Anti-pill, dense compact pile fleece. Unlined.  
Panel design with cover stitching detail.  
Collar high full length zip.  
Two front zip pockets. Hemmed cuffs.  
Open hem style.

Weight: 320 gsm



Age:	3-4	5-6	7-8	9-10	11-12
Height (cm):	104	116	128	140	152
Chest (to fit):	22/25	25/28	28/30	30/32	32/34

### RS37B Result Kids/Youths Polartherm™ Fleece Bodywarmer

100% polyester.  
Pill resistant. Unlined. Full length zip. Two front zip pockets.  
Reflective safety triangle front and back. Cut out label.

Weight: 330 gsm

Age:	3-4	4-6	6-8	8-10	10-12	12-14*
Height (cm):	104	116	128	140	152	164
Chest (to fit):	21/22	22/24	24/26	26/29	29/31	31/34

\*12-14 subject to VAT.



RS37B

Result



RS37 P450

## RS905B



RS905 P442



### RS905B Result Genuine Recycled Kids Zip Neck Micro Fleece

100% recycled polyester.  
Unlined. Breathable. Raglan sleeves. Hang tag.  
YKK Natulon® eco-friendly zip. Decorative body stitching.  
Open cuffs. Soft bound elasticated hem.  
Tag free.

Weight: 165 gsm

Age:	4-6	6-8	8-10	10-12	12-14*
Height (cm):	104/116	116/128	128/140	140/152	152/164

\*12-14 subject to VAT.



### RS33B Result Kids/Youths Zip Neck Polartherm™ Fleece

100% polyester.  
Pill resistant. Unlined. Elasticated cuffs. Two front pockets.  
Reflective triangle front and back. Adjustable drawcord hem - EN14682 compliant. Cut out label.

Weight: 330 gsm

Age:	3-4	4-6	6-8	8-10	10-12	12-14*
Height (cm):	104	116	128	140	152	164
Chest (to fit):	21/22	22/24	24/26	26/29	29/31	31/34

\*12-14 subject to VAT.



## RS33B



RS33 P441



## RG255 [TRA683]



### RG255 Regatta Kids Classmate Soft Shell Jacket

Two layer soft shell.  
Warm backed woven stretch soft shell. Showerproof and wind resistant.  
Collar high full length zip. Reflective trim on shoulders and lower back hem.  
Two front zip pockets. Open cuffs and hem.

Age:	3-4	5-6	7-8	9-10	11-12	-	-
Chest (to fit):	-	-	-	-	-	32	34*
Height (cm):	104	116	128	140	152	158	164

\*34 subject to VAT.



### RS121B Result Kids Classic Soft Shell Jacket

Soft shell three layer bonded fabric.  
93% polyester/7% elastane outer.  
Waterproof 8000mm, breathable 1000g and windproof mid layer. Polyester micro fleece inner layer. Full length zip with chin guard and inner zip guard. Decorative front and back yoke. Right zip chest pocket. Two inner pockets. Two front zip pockets. Tear release adjustable cuffs with reflective patch. Adjustable drawcord hem - EN14682 compliant. Cut out label. Access for decoration.

Age:	3-4	5-6	7-8	9-10	11-12	13-14*
Height (cm):	104	116	128	140	152	164
Chest (to fit):	22	24	26	28	30	32/34

\*13-14 subject to VAT.



## RS121B



RS121M P408



RS121F P421



LV624

FINDEN +HALES



LV622 P490

### LV624 Finden & Hales Kids Active Soft Shell Jacket

100% polyester single jersey.  
Soft jersey fabric with bonded micro fleece reverse.  
Three panel hood. Contrast shoulders and upper sleeve panels.  
Full length contrast zip with non-slip gripper zip pulls. Contrast right chest zip pocket.  
Two contrast front zip pockets. Top stitched side panels. Stretch bound cuffs and hem.  
Curved drop hem.



black/red navy/royal blue dark grey/mar/ black

Age:	5-6	7-8	9-10	11-12	13
Height (cm):	110/116	122/128	134/140	146/152	164
Chest (to fit):	24/26	26/28	28/30	30/32	32/34

### RG262 Regatta Kids Octagon Hooded Soft Shell Jacket

Warm backed woven three layer soft shell XPT.  
Waterproof, wind resistant and breathable membrane. Polyester fleece inner layer.  
Grown on part elasticated hood. Full length contrast low profile zip with chin guard and inner zip guard. Right chest zip pocket. Two front zip pockets with reflective piping.  
Open cuffs. Drawcord hem. Reflective detail on centre back hem. Cut out label.  
Ideal for screen, transfer and vinyl printing.



black navy

Age:	3-4	5-6	7-8	9-10	11-12	-	-
Chest (to fit):	-	-	-	-	-	32	34*
Height (cm):	104	116	128	140	152	158	164

\*34 subject to VAT.



SOFTSHELL XPT

RG262 [TRA622]

JUNIOR REGATTA PROFESSIONAL



RG191 P409



RG192 P421

RS224B

Result  
core  
VALUE

### RS224B Result Core Kids TX Performance Hooded Soft Shell Jacket

Three layer bonded soft shell.  
93% polyester/7% elastane outer layer. Waterproof 8000mm, windproof and breathable TPU membrane. Polyester micro fleece inner layer.  
Integral hood. Full length zip with chin guard and inner zip guard.  
Decorative hood and sleeve panelling. Two front pockets. Reflective detail to front and back. Open cuffs and hem. Drop hem. Cut out label.



black/grey navy/royal blue royal blue/navy purple/grey vivid green/black red/black

Age:	3-4	5-6	7-8	9-10	11-12	13-14*
Height (cm):	104	116	128	140	152	164
Chest (to fit):	22	24	26	28	30	32/34

\*13-14 subject to VAT.

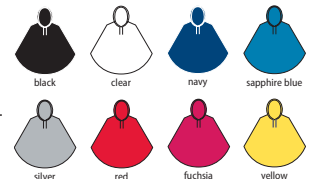


Cut Out



### SC19 Splashmacs Kids Rain Poncho

PVC poncho style rain cape.  
Waterproof and windproof. Popper neck closure.  
Can be opened up and laid flat to double as a groundsheet.  
Comes in a press fastened carry case with a drawstring handle. Carry case branded on one side - other side free for decoration.



black clear navy sapphire blue silver red fuchsia yellow

Size:	One
Age:	6-12



WP WP

SC19

splashmacs



SC10 P351

# 672 JACKETS & OUTERWEAR

**RG256** [TRW908]

**JUNIOR**  
**REGATTA**  
PROFESSIONAL



## **RG256** Regatta Kids Pro Stormbreak Waterproof Jacket

Hydrafort 5000 polyester outer.  
Waterproof with taped seams. Windproof. Integral hood.  
Full length zip with inner zip guard. Two front pockets.  
Elasticated cuffs. Reflective trim detail on back hem.

Age:	2	3-4	5-6	7-8	9-10	11-12	-	-
Chest (to fit):	-	-	-	-	-	-	32	34*
Height (cm):	98	104	116	128	140	152	158	164

\*34 subject to VAT.



HYDRAFORT 5000

**RG257** [TRW808]

**JUNIOR**  
**REGATTA**  
PROFESSIONAL



## **RG257** Regatta Kids Pro Stormbreak Overtrousers

Hydrafort 5000 polyester.  
Waterproof with taped seams. Windproof. Elasticated waistband.  
Two side pockets. Open leg ends with stud adjusters.

Age:	2	3-4	5-6	7-8	9-10	11-12	-	-
Waist (to fit):	-	-	-	-	-	-	26	28
Height (cm):	98	104	116	128	140	152	158	164



HYDRAFORT 5000

## **RS227B** Result Core Kids Waterproof Over Jacket

190T polyester with PVC coating.  
Waterproof 2000mm with taped seams. Windproof. Concealed hood.  
Full length zip with studded storm flap. Two front pockets. Mesh ventilation panel on back.  
Inner elasticated cuffs. Adjustable drawcord at hem - EN14682 compliant. Cut out label.

Age:	3-4	5-6	7-8	9-10	11-12
Height (cm):	104	116	128	140	152
Chest (to fit):	22	24	26	28	30



Cut Out

## **RS226B** Result Core Kids Waterproof Overtrousers

190T polyester with PVC coating.  
Waterproof 2000mm with taped seams.  
Windproof. Elasticated waistband.  
Waist vents to access inner pockets.  
Open leg ends with snap adjusters.  
Cut out label.

Age:	3-4	5-6	7-8	9-10	11-12
Height (cm):	104	116	128	140	152
Waist (to fit):	20	22	23	25	27



Cut Out

**RS227B**

**Result**  
**core**  
VALUE



RS227 P351



**RS226B**

**Result**  
**core**  
VALUE



RS226 P351



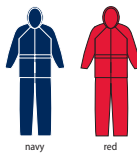

**RS95B**
**Result**


RS95 P352

**RS95B Result**
**Kids Waterproof Jacket/Trouser Suit in Carry Bag**

190T 100% StormDri 2000 coated polyester outer. Waterproof with taped seams. Windproof. Hood with tear release closure. Jacket has full length zip, underarm ventilation eyelets, inner storm cuffs and two front pockets. 3M™ reflective safety triangles. Adjustable drawcord hem - EN14682 compliant. Trousers have elasticated waistband, slit access to pockets. Open leg ends with snap adjusters. Comes in zip closing branded carry bag. Cut out label.

Age:	3-4	5-6	7-8	9-10	11-12
Height (cm):	104	116	128	140	152
Chest (to fit):	22	24	26	28	30

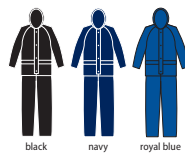


**3M Scotchlite™** Reflective Material This garment contains recycled materials

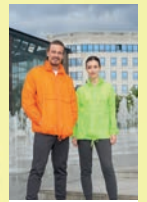
**RS225B Result Core**  
**Kids Waterproof Rain Suit**

Polyester with PU coating. Waterproof 2000mm with taped seams. Windproof. Integrated concealed elasticated hood. Full length zip with studded storm flap. Two front pockets. Mesh ventilation panel on back. Ventilation underarm eyelets. Inner elasticated storm cuffs. Reflective trim on cuffs. Trousers have elasticated waistband. Slit access to pockets. Adjustable snap closing hem. Cut out label.

Age:	3-4	5-6	7-8	9-10	11-12
Height (cm):	104	116	128	140	152
Chest (to fit):	22	24	26	28	30


**RS225B**
**Result**  
**core**  
 VALUE


RS225M P352


**32300**
**SOL'S**  
 the fair spirit


32000 P353

**32300 SOL'S**
**Kids Surf Windbreaker Jacket**

210T nylon shell. Unlined. Shower resistant and windproof. Concealed hood. Full length zip. Underarm ventilation eyelets. Two front zip pockets. Elasticated cuffs. Drawcord at hem. Packs/zips into front right pocket. This item runs small in comparison to some other brands. Please check sizing before decoration.

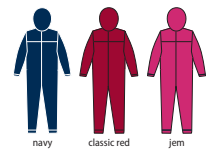


Age:	5-6	7-8	9-11	12-14*	15-16*
Height (cm):	105-116	117-128	129-141	142-164	165-176

\*12-14 and 15-16 subject to VAT.


**RG252 Regatta**  
**Kids Paddle Rain Suit**

Isolite® polyester outer. Lightweight. Waterproof with taped seams. Windproof and breathable. Integral hood. Reflective trim to front and back. Part elasticated waist. Elasticated cuffs and leg hems. Branding on back of collar.



Age (months):	6-12	12-18	18-24	24-36	36-48	48-60	60-72
Age (years):	-	-	-	2-3	3-4	4-5	5-6
Height (cm):	80	86	92	98	104	110	116


**RG252 [TRW466]**
**JUNIOR**  
**REGATTA**  
 PROFESSIONAL

## RS160B



RS160 P436



### RS160B Result Kids/Youths StormDri 4000 Reversible Jacket

PVC coated StormDri 4000 polyester with pill resistant polyester Active Fleece reverse. Waterproof with taped seams. Windproof. Double stitched seams. Concealed, adjustable fleece lined hood. Full length zip with studded storm flap. Two front zip pockets. Reflective triangle. Elasticated cuffs. Cut out label (some colours in transition). Tear release access for decoration.

Weight: 280 gsm (fleece)

Age:	2-3**	3-4	5-6	7-8	9-10	11-12	13-14*
Height (cm):	96	104	116	128	140	152	164
Chest (to fit):	20	22	24	26	28	30	32/34

\*13-14 subject to VAT.

\*\*Not available in 2-3.



This garment contains recycled materials



### RG244 Regatta Kids Dover Waterproof Insulated Jacket

Hydrafort 5000 polyester outer. 220 series anti-pill Symmetry® fleece lined body. Polyamide lined sleeves. Thermo-Guard® insulation. Waterproof with taped seams. Windproof. Concealed peaked hood. Fleece lined collar. Collar high full length zip with storm flap. Two front zip pockets. Inner pocket. Part elasticated adjustable cuffs. Elasticated side hem. Name/class label under storm flap. Branding on back neck. Zip access for decoration.

Age:	3-4	5-6	7-8	9-10	11-12	-	-	-
Chest (to fit):	-	-	-	-	-	32	34*	36*
Height (cm):	104	116	128	140	152	158	164	170

\*34-36 subject to VAT.



HYDRAFORT 5000



## 875B



### 875B Jerzees Schoolgear Kids Reversible Jacket

100% woven polyester with 100% polyester pill resistant fleece reverse. Showerproof. Cadet collar with concealed hood. Name label inside collar. Full length zip with storm flap. Two front pockets (zip - polyester side/non zip - fleece side). Hi-vis reflective taping across lower back. Elasticated cuffs. Access for decoration.

Age:	3-4	5-6	7-8	9-10	11-12
Height (cm):	104	116	128	140	152
Chest (to fit):	22/25	25/28	28/30	30/32	32/34



### RS203B Result Core Kids Micro Fleece Lined Jacket

100% polyester with PU coating. Micro fleece body and sleeve lining. Waterproof 2000mm with taped seams. Windproof. Concealed waterproof hood. Full length zip. Two front pockets. Safety tape across lower back panel. Design flap across front and back panels. Elasticated cuffs. Cut out label. Access for decoration.

Age:	3-4	5-6	7-8	9-10	11-12	13-14*
Height (cm):	104	116	128	140	152	164
Chest (to fit):	22	24	26	28	30	32/34

\*13-14 subject to VAT.



This garment contains recycled materials



## RG244 [TRW418]



RG045 P362



RG074 P363



## RS203B



RS203M P370





RS150B

Result

## RS150B Result Kids/Youths Rugged Stuff Longline Coat

PVC coated polyester outer. Polyester Active Fleece lining. Waterproof 2000mm with double stitched taped seams. Windproof. Extremely hardwearing. Concealed adjustable hood. Hang tag. Reflective collar panel. Prismatic reflective patch on lower back. Full length zip with tear release storm flap with three reflective tabs. Two inner pockets. 9-10 years up have inner mobile phone pocket. Two front pockets. Elasticated cuffs. Cut out label (some colours in transition). Access for decoration.



Age:	3-4	5-6	7-8	9-10	11-12	13-14*	15-16*
Height (cm):	104	116	128	140	152	164	175
Chest (to fit):	22	24	26	28	30	32/34	36/38

\*13-14 and 15-16 subject to VAT.



This garment contains recycled materials



RG260 [TRA309]

JUNIOR REGATTA PROFESSIONAL

## RG260 Regatta Kids Cadet Insulated Parka Jacket

Hydrafort 5000 polyester outer. Contrast polyester lining. High loft polyester padding. Waterproof with taped seams. Windproof. Grown on hood with faux fur trim. Full length zip with tear release storm flap, chin guard and inner zip guard. Drawcord waist. Two front patch pockets with flaps. Part elasticated tear release adjustable cuffs. Open hem. Reflective piping. Cut out label. Zip access for decoration.



Age:	3-4	5-6	7-8	9-10	11-12	-	-
Chest (to fit):	-	-	-	-	-	32	34*
Height (cm):	104	116	128	140	152	158	164

\*34 subject to VAT.



## RS207B Result Core Kids Winter Parka

100% polyester pongee with StormDri 2000 PVC coating. Polyester quilted lining. Waterproof 2000mm with taped seams. Windproof. Concealed hood. Fleece inner collar. Full length zip with tear release storm flap. Two front pockets with storm flaps and fleece lining. Elasticated cuffs and reflective tape cuff detail. Name tag inside left pocket. Adjustable drawcord hem. Cut out label. Access for decoration.



Age:	3-4	5-6	7-8	9-10	11-12	13-14*
Height (cm):	104	116	128	140	152	164
Chest (to fit):	22	24	26	28	30	32/34

\*13-14 subject to VAT.



## RS195B Result Urban Kids Cheltenham Jacket

210T polyester with AC coating. 2x2 diamond quilted. Polyester padding and lining. Showerproof and windproof. Corduroy inner collar. Full length zip with studded storm flap. Two patch pockets with stud closure. Jetted side vents. Bound open cuffs. Cut out label. Open hem. Access for decoration.



Age:	3-4	5-6	7-8	9-10	11-12
Height (cm):	104	116	128	140	152
Chest (to fit):	22	24	26	28	30



RS207B

Result core



RS195B

Result urban OUTDOOR WEAR



## RS233B



RS233M P381



### RS233B Result Core Kids Padded Jacket

Polyester outer.  
Polyester padding and lining. Lightweight. Showerproof and windproof. Integral hood. Hang tag. Hinged inner neck panel for rebranding. Full length zip. Two front zip pockets. Soft bound cuffs and hem. Reflective hip detail. Contrast lining and trim. Tag free. Access for decoration.

Age:	2-3	3-4	5-6	7-8	9-10	11-12	13-14*
Height (cm):	96	104	116	128	140	152	164
Chest (to fit):	20	22	24	26	28	30	32/34

\*13-14 subject to VAT.



## RS234B



### RS234B Result Core Kids Padded Bodywarmer

Polyester outer.  
Polyester padding and lining. Lightweight. Showerproof and windproof. Contrast lining and trim. Hang tag. Hinged inner neck panel for rebranding. Full length zip. Elasticated bound armholes. Two front zip pockets. Soft bound hem. Reflective hip detail. Tag free.

Age:	2-3	3-4	5-6	7-8	9-10	11-12	13-14*
Height (cm):	96	104	116	128	140	152	164
Chest (to fit):	20	22	24	26	28	30	32/34

\*13-14 subject to VAT.



### RG254 Regatta Kids Stormforce Thermo-Guard® Thermal Jacket

Polyamide outer.  
Polyester padding. Thermo-Guard® insulation. Taffeta lining. Showerproof. Grown on hood with stretch bound opening. Full length zip with chin guard and inner zip guard. Two front zip pockets. Stretch bound cuffs and hem. Reflective trim and branding on lower back hem. Zip access for decoration.

Age:	3-4	5-6	7-8	9-10	11-12	-	-
Chest (to fit):	-	-	-	-	32	34*	
Height (cm):	104	116	128	140	152	158	164

\*34 subject to VAT.



### RS88B Result Kids Ultra Padded Bodywarmer

Peached polyester microfibre quilted outer.  
Polyester inner and polyester Active Fleece lining. Showerproof and windproof. Concealed hood in the collar. Collar high full length zip. Right chest zip pocket. Two front zip pockets. Reflective triangle on front and reflective patch centre back. Cut out label. Access for decoration.

Age:	2-3	3-4	5-6	7-8	9-10	11-12
Height (cm):	96	104	116	128	140	152
Chest (to fit):	20	22	24	26	28	30



This garment contains recycled materials

## RG254 [TRA454]



## RS88B



RS88 P397



**YK102B [HVV100CH]****YK102B Yoko Kids Hi-Vis Two Band and Braces Waistcoat**

100% recycled polyester (some colours in transition).  
Conforms to EN 1150: 1999.  
Tear release front closure.  
Two reflective tape bands around the body and one over each shoulder.  
Contrast bound edges.

Size:	S	M	L
Chest (to fit):	28/30	32/34	36/38



orange



yellow



YK102 P615

**WR040 [WKTTFAG]****WARRIOR****WR040 Warrior Kids Hi-Vis Two Tone Hooded Waistcoat**

100% polyester.  
Conforms to EN 1150: 1999.  
Grown on hood with reflective tape.  
Orange shoulder and side body panels.  
Two reflective tape bands around the body.  
Tear release front closure.  
Contrast bound edges.

Age:	4-6	7-10	10-13
------	-----	------	-------



yellow/orange

**NEW****YK200B [HVP211CH]****YK200B Yoko Kids Hi-Vis Bomber Jacket**

300D oxford polyester outer with PU coating. Diamond quilted nylon lining with polyester padding. Conforms to EN 1150: 1999. Waterproof with stitched and taped seams. Concealed hood. Collar high full length zip with studded storm flap. Two reflective bands around the body, sleeves and one over each shoulder. Two slanted front pockets. Black elasticated knitted cuffs and hem.

Size:	S	M	L
Chest (to fit):	28/30	32/34	36/38



yellow



YK200 P625

**RX700B PRO RTX Hi-Vis Kids Waistcoat**

100% polyester.  
Conforms to EN 1150: 1999 (yellow and orange only).  
Tear release front closure.  
Two reflective bands around the body and one over each shoulder.  
Self colour bound edges.

Size:	S	M	L
Age:	4-6	7-9	10-12



royal blue



lime green



red



pink



orange



yellow

**RX700B**

RX700 P615

**RS200BE****RS200BE Result Core Kids Enhanced Vis Vest**

100% polyester.  
Tear release front closure.  
Two reflective bands around the body.  
Grey polyester bound edges.  
Generous in size allowing to be worn as an over garment.  
Tear out label.

Size:	S	M	L
Age:	4-6	7-9	10-12
Height (cm):	121	140	158
Chest (to fit):	23/24	25/28	29/31



navy



royal blue



sky blue



lime green



burgundy



red



pink



RS200E P613

**NEW****RS200B Result Core Kids Hi-Vis Safety Vest**

100% polyester.  
Conforms to EN 1150: 1999.  
89/686/EEC directive.  
Two reflective bands around the body.  
Grey polyester bound edges.  
Sized to be worn as an over garment.  
Cut out label.

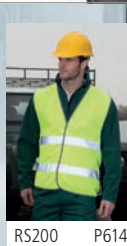
Age:	4-6	7-9	10-12
Height (cm):	121	140	158
Chest (to fit):	23/24	25/28	29/31



fluorescent orange



fluorescent yellow

**RS200B**

RS200 P614

**NEW COLOURS**

## YK106B [HVW102CH]



### YK106B Yoko Kids Hi-Vis Two Band Waistcoat

100% recycled polyester (some colours in transition).  
Conforms to EN 1150: 1999 (yellow and orange only). Tear release front closure.  
Two reflective tape bands around the body.  
Reflective bound edges for extra visibility.

Size:	S	M	L
Chest (to fit):	28/30	32/34	36/38



## RS212B



### RS212B Result Safe-Guard Kids Hi-Vis Tabard

100% polyester.  
Conforms to EN 1150: 1999.  
89/686/EEC directive.  
High visibility knitted polyester.  
3M™ reflective safety tape, front and back.  
Elasticated side straps with tear release closure.  
Orange bias bound edge trim.  
Generous sizing allowing it to be worn as an over garment.

Age:	3-6	7-10
Height (cm):	96/104	116/140



## W362



W364 P542



### W362 Westford Mill Fairtrade Kids Craft Apron

100% cotton drill.  
Fairtrade certified.  
Cotton herringbone neck tie with adjustable Rip-Strip™ fastening.  
Cotton herringbone 60cm ties.  
Width 45cm.  
Length 60cm.

Weight: 290 gsm

Dimensions:	45 x 60 cm
Print area (top):	18 x 19 cm
Print area (bottom):	39 x 33 cm
Embroidery:	22 tubular hoop



## PR149



PR150 P535

### PR149 Premier Kids Bib Apron

65% polyester/35% cotton twill.  
Easy care fabric. Self fabric neckband with adjuster and snap release. Self fabric 50cm long ties. Industrial laundry 85°C. Domestic wash 60°C.

Weight: 195 gsm

Size:	Infant	Junior
Age:	3-6	7-10
Width (cm):	43	48
Length (cm):	53	63



### PR145 Premier Kids Waterproof Apron

100% polyester.  
Polyurethane coating. Easy care fabric.  
Waterproof. Self fabric adjustable neck tie with snap release. Self fabric 50cm waist ties.  
Industrial laundry 85°C. Domestic wash 60°C.

Weight: 110 gsm

Size:	Infant	Junior
Age:	3-6	7-10
Width (cm):	43	48
Length (cm):	53	63



## PR145





**BZ02**

**BABYBUGZ**

**BZ02 BabyBugz Baby T-Shirt**

100% OCS certified organic cotton.\*  
Ribbed collar. Two self colour popper closure on left shoulder. Side seams. Coverseam stitched cuffs and hem. Tear out label.

Weight: 200 gsm

Age:	0-3m	3-6m	6-12m
Height (cm):	56-60	60-66	66-76
Age:	12-18m	18-24m	2-3y
Height (cm):	76-86	86-93	93-98

\*Bubble gum pink, dusty blue, mint, nautical navy, orange, powder pink, red and soft yellow 100% standard cotton. \*\*Charcoal melange, heather blue and mocha 60% organic cotton/40% polyester.

▲Heather marl 85% organic cotton/15% polyester. ■Available in age 2-3.



100% ORGANIC COTTON  
**VEGAN**

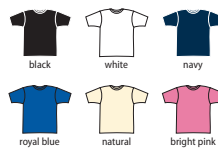


**LW620T Larkwood Baby/Toddler Organic T-Shirt**

100% organic cotton.  
Single jersey. Ribbed neck.  
Twin needle stitching.  
Tag free.

Weight: 160 gsm

Age:	0-3m	3-6m	6-12m	12-18m	18-24m	24-36m
Height (cm):	62	62/68	68/80	80/86	86/92	92/98



**Sedex**

**No Label**



**LW620T**

**larkwood**  
Baby and Toddler Collection

**LW20T Larkwood Baby/Toddler T-Shirt**

100% cotton single jersey.\*  
Taped back neck.  
Twin needle stitching.

Weight: 160 gsm

Age:	0-6m	6-12m	12-18m	18-24m
Height (cm):	60/68	68/80	80/86	86/92
Age:	24-36m	3-4y	5-6y	
Height (cm):	92/98	98/104	110/116	

\*Heather grey 90% cotton/10% viscose.

\*\*Sublimation white 100% polyester.

▲Available in age 5-6.

■Not available in age 3-4 and 5-6.



**Sedex**

# 680 BABY & TODDLER T-SHIRTS

## CV3001B

BELLA+CANVAS.



CV3001 P75



BL6004 P132



### CV3001B Bella+Canvas Baby Crew Neck T-Shirt

100% airlume combed ringspun cotton.\*  
Single jersey. Ribbed collar. Shoulder to shoulder taping. Twin needle stitching. Tear out label.

Weight: 145 gsm

Age: 3-6m 6-12m 12-18m 18-24m

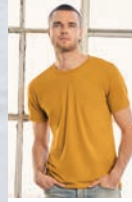
\*Athletic heather 90% airlume combed ringspun cotton/10% polyester.  
\*\*Dark grey heather 52% airlume combed ringspun cotton/48% polyester.



Tear Out

## CV3413B

BELLA+CANVAS.



CV3413 P101



BL8413 P144



### CV3413B Bella+Canvas Baby Tri-Blend T-Shirt

50% polyester/25% airlume combed ringspun cotton/25% rayon.  
Ribbed collar.  
Shoulder to shoulder taping. Twin needle sleeves and hem. Tear out label.

Weight: 130 gsm

Age: 3-6m 6-12m 12-18m 18-24m



Tear Out

### CV3001T Bella+Canvas Toddler Crew Neck T-Shirt

100% airlume combed ringspun cotton.\*  
Single jersey. Ribbed collar. Shoulder to shoulder taping. Twin needle stitching. Tear out label.

Weight: 145 gsm

Age: 2 3 4 5  
Chest (to fit): 21 23 24 26

\*Athletic heather 90% airlume combed ringspun cotton/10% polyester.  
\*\*Dark grey heather 52% airlume combed ringspun cotton/48% polyester.



Tear Out

### CV3413T Bella+Canvas Toddler Tri-Blend T-Shirt

50% polyester/25% airlume combed ringspun cotton/25% rayon.  
Ribbed collar.  
Shoulder to shoulder taping. Twin needle sleeves and hem. Tear out label.

Weight: 130 gsm

Age: 2 3 4 5  
Chest (to fit): 21 23 24 26



Tear Out

## CV3001T

BELLA+CANVAS.



CV3001 P75

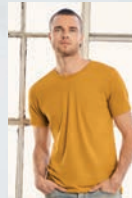


BL6004 P132



## CV3413T

BELLA+CANVAS.



CV3413 P101



BL8413 P144





LW27T

**larkwood**  
Baby and Toddler Collection

**LW27T Larkwood  
Baby/Toddler Striped Crew Neck T-Shirt**

100% cotton single jersey.  
Plain ribbed collar.  
Taped back neckline.  
Twin needle stitching.  
Unbranded size label at neckline.

Weight: 160 gsm

Age:	0-6m	6-12m	12-18m	18-24m	24-36m	3-4y
Height (cm):	60/68	68/80	80/86	86/92	92/98	98/104



white/  
oxford navy

**Sedex**



**BZ57 BabyBugz  
Baby Dips T-Shirt**

100% OCS certified organic combed ringspun cotton.  
Dip dyed design.  
Nickel free popper closure on left shoulder.  
Coverseamed collar, sleeves and hem.  
Tear out label.

Weight: 200 gsm

Age:	0-3m	3-6m	6-12m	12-18m	18-24m	2-3y
Height (cm):	56-60	60-66	66-76	76-86	86-93	93-98



white/  
surf blue      white/  
bubble gum pink



**Tear Out**

**VEGAN**

**larkwood**  
Baby and Toddler Collection

**LW21T Larkwood  
Baby/Toddler Long Sleeve T-Shirt**

100% cotton single jersey.  
Ribbed neckline.  
YKK popper closure on left shoulder.  
Twin needle stitching.

Weight: 160 gsm

Age:	0-6m	6-12m	12-18m
Height (cm):	60/68	68/80	80/86
Age:	18-24m	24-36m	3-4y
Height (cm):	86/92	92/98	98/104



black

white

pale blue

red

pale pink

**Sedex**



LW21T

**BABYBUGZ**

**BZ11 BabyBugz  
Baby Long Sleeve T-Shirt**

100% OCS certified organic combed cotton.\*  
Ribbed collar.  
Two self colour popper closure on left shoulder.  
Coverseam stitched cuffs and hem.

Weight: 200 gsm

Age:	3-6m	6-12m	12-18m	18-24m
Height (cm):	60-66	66-76	76-86	86-93

\*Heather marl 85% organic cotton/15% viscose.



black

white

nautical navy

dusty blue

heather marl\*

red

bubble gum pink

powder pink



**NON-APPROVED  
VEGAN**



BZ11

**larkwood**  
Baby and Toddler Collection

**LW40T Larkwood  
Baby/Toddler Polo Shirt**

100% cotton piqué.  
Taped neck.  
Three self colour button placket.  
Hemmed sleeves.  
Twin needle stitching.

Weight: 200 gsm

Age:	0-6m	6-12m	12-18m
Height (cm):	60/68	68/80	80/86
Age:	18-24m	24-36m	
Height (cm):	86/92	92/98	



white

navy

**Sedex**



LW40T

**BZ57**  
**BABYBUGZ**



LW25T



**larkwood**  
Baby and Toddler Collection

## LW25T Larkwood Baby/Toddler Long Sleeve Baseball T-Shirt

100% cotton single jersey.  
Contrast collar and sleeves.  
Twin needle stitching.

Weight: 160 gsm

Age:	0-6m	6-12m	12-18m
Height (cm):	60/68	68/80	80/86
Age:	18-24m	24-36m	
Height (cm):	86/92	92/98	



**Sedex**

**larkwood**  
Baby and Toddler Collection

## LW28T Larkwood Baby/Toddler Striped Long Sleeve T-Shirt

100% cotton.  
Contrast ribbed collar and elbow patches.  
YKK popper shoulder closure.  
Twin needle stitching.

Unbranded size label at neckline.

Weight: 160 gsm

Age:	0-6m	6-12m	12-18m
Height (cm):	60/68	68/80	80/86
Age:	18-24m	24-36m	
Height (cm):	86/92	92/98	



**Sedex**



LW28T



BZ43



**BABYBUGZ**

## BZ43 BabyBugz Baby Long Sleeve Baseball T-Shirt

100% OCS certified organic cotton.  
Contrast collar.  
Contrast raglan sleeves.  
Curved hem with contrast overlock stitching.  
Tear out label.

Weight: 150 gsm

Age:	6-12m	12-18m	18-24m
Height (cm):	66-76	76-86	86-93



**BABYBUGZ**

## BZ52 BabyBugz Baby Breton Long Sleeve T-Shirt

100% OCS certified organic combed ringspun cotton.  
Yarn dyed stripes.  
Soft stretch fabric.  
Nickel free navy shoulder poppers.  
Side vents.  
Drop tail.  
Twin needle stitching.  
Tear out label.

Weight: 200 gsm

Age:	3-6m	6-12m	12-18m	18-24m
Height (cm):	60-66	66-76	76-86	86-93



BZ52



CV3200T



**BELLA+CANVAS**

## CV3200T Bella+Canvas Toddler 3/4 Sleeve Baseball T-Shirt

52% airlume combed ringspun cotton/48% polyester.\*  
Contrast collar. Contrast raglan sleeves.  
Side seams. Tear out label.

Weight: 130 gsm

Age:	2	3	4	5
Chest (to fit):	21	23	24	26

\*Tri-blends 50% polyester/25% cotton/25% rayon.



**BABYBUGZ**

## BZ47 BabyBugz Baby Striped Hooded T-Shirt

100% OCS certified organic cotton.\*  
Yarn dyed narrow stripes.  
Three panel double fabric hood.  
Front popper closure.  
Straight hem with side vents.  
Twin needle sleeves and hem.  
Tear out label.

Weight: 200 gsm

Age:	3-6m	6-12m	12-18m
Height (cm):	60-66	66-76	76-86

\*White/heather marl 92% organic cotton/8% viscose.



BZ47





**BZ25**

**BABYBUGZ**

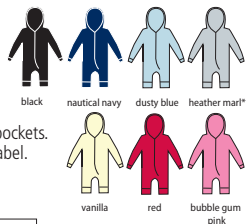
**BZ25 BabyBugz Baby All In One**

80% cotton/20% polyester.\*  
In transition to using organic cotton and recycled polyester. Brushed back fleece. Single layer hood. Zip front with chin guard. Seam free back. Two front pockets. Extra long cuffed sleeves and leg openings. Tear out label.

Weight: 250 gsm

Age:	6-12m	12-18m	18-24m	2-3y	4-5y
Height (cm):	66-76	76-86	86-93	93-98	104-110

\*Heather marl 71% organic cotton/21% recycled PET/8% viscose.



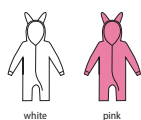
Tear Out

**LW073T Larkwood Baby/Toddler Rabbit All In One**

100% plush polyester.  
Hood with rabbit ears, eyes and nose.  
Longline YKK zip for ease of access.  
Tag free.

Weight: 240 gsm

Age:	0-6m	6-12m	12-18m	18-24m	24-36m
Height (cm):	60/68	68/80	80/86	86/92	92/98



No Label



**LW073T**

**larkwood**  
Baby and Toddler Collection



**larkwood**  
Baby and Toddler Collection

**LW70T Larkwood Baby/Toddler Fleece All In One**

80% cotton/20% polyester.\*  
Brushed back fleece.  
Single jersey inner hood.  
Hood with ear detail.  
Longline YKK zip for ease of access.  
Front pouch pockets.  
Flatlock stitching.

Weight: 280 gsm

Age:	6-12m	12-18m	18-24m	24-36m
Height (cm):	68/80	80/86	86/92	92/98

\*Heather grey 71% cotton/23% polyester/6% viscose.



**BABYBUGZ**

**BZ53 BabyBugz Baby Rocks Denim Jacket**

100% OCS certified organic cotton.  
Nickel free front popper closure.  
Two chest pockets.  
Popper closure on cuffs.  
Tabs with poppers on rear hem.  
Jean style stitching.  
Tear out label.

Weight: 305 gsm

Age:	3-6m	6-12m	12-18m
Height (cm):	60-66	66-76	76-86
Age:	18-24m	2-3y	4-5y
Height (cm):	86-93	93-98	104-110



Tear Out

WRAP APPROVED  
VEGAN



**LW70T**



**BZ53**

**larkwood**  
Baby and Toddler Collection

**LW35T Larkwood Baby/Toddler Rain Jacket**

100% polyester.  
Striped cotton lining.  
Showerproof.  
Full length zip with chin guard and studded storm flap.  
Two front stud closure patch pockets.  
Open cuffs and hem.  
Unbranded size label at neckline.

Age:	6-12m	12-18m	18-24m
Height (cm):	68/80	80/86	86/92
Age:	24-36m	3-4y	
Height (cm):	92/98	98/104	



No Label



**LW35T**

LW02T



**larkwood**  
Baby and Toddler Collection

**LW02T Larkwood  
Baby/Toddler Hooded Sweatshirt**

80% cotton/20% polyester.  
Brushed back fleece.  
Single jersey lined hood.  
Contrast taping inside neck seam.  
Placket detail at front neck.  
Front pouch pocket.  
Knitted ribbed cuffs and hem.  
Twin needle stitching.

Weight: 280 gsm

Age:	6-12m	12-18m	18-24m
Height (cm):	68/80	80/86	86/92
Age:	24-36m	3-4y	5-6y*
Height (cm):	92/98	98/104	110/116

\*Available in age 5-6.



**Sedex**

**larkwood**  
Baby and Toddler Collection

**LW06T Larkwood  
Baby/Toddler Sweatshirt**

80% cotton/20% polyester.\*  
Brushed back fleece.  
Knitted ribbed collar, cuffs and hem.  
6-12m to 24-36m have a popper closure  
on left shoulder.  
Twin needle stitching.

Weight: 280 gsm

Age:	6-12m	12-18m	18-24m
Height (cm):	68/80	80/86	86/92
Age:	24-36m	3-4y	
Height (cm):	92/98	98/104	

\*Heather grey 71% cotton/23% polyester/6% viscose.



**Sedex**

LW06T



LW05T



**larkwood**  
Baby and Toddler Collection

**LW05T Larkwood  
Baby/Toddler Zip Hooded  
Sweatshirt**

80% cotton/20% polyester.  
Brushed back fleece.  
Single jersey lined hood.  
Taped neck.  
Covered full length YKK zip.  
Knitted ribbed cuffs and hem.  
Two front pockets.  
Twin needle stitching.

Weight: 280 gsm

Age:	6-12m	12-18m	18-24m
Height (cm):	68/80	80/86	86/92
Age:	24-36m	3-4y	
Height (cm):	92/98	98/104	



**Sedex**

**BABYBUGZ**

**BZ31 BabyBugz  
Baby Sweatshirt**

80% OCS certified organic cotton/20% polyester.\*  
Ribbed collar and cuffs.  
Stitched V detail at neck.  
Locker patch.  
Two self colour poppers on left shoulder.  
Side vents.  
Drop tail.  
Tear out label.

Weight: 280 gsm

Age:	6-12m	12-18m	18-24m
Height (cm):	66-76	76-86	86-93

\*Heather marl 71% organic cotton/21% recycled PET/8% viscose.



BZ31



BZ32



**BABYBUGZ**

**BZ32 BabyBugz  
Baby Hoodie**

80% OCS certified organic cotton/20% polyester.\* Brushed back fleece. Single layer hood with mock natural colour drawcord. Natural herringbone taped neck and side vents. Full length zip. Front pouch pockets. Open cuffs and hem. Tear out label.

Weight: 250 gsm

Age:	6-12m	12-18m	18-24m
Height (cm):	66-76	76-86	86-93
Age:	2-3y	4-5y	
Height (cm):	93-98	104-110	

\*Heather marl 71% organic cotton/21% recycled PET/8% viscose.



**BABYBUGZ**

**BZ56 BabyBugz  
Baby Rocks Denim Dungarees**

100% OCS certified organic cotton.  
Straps with adjustable popper closure.  
High back.  
Popper closure on sides.  
Drop crotch.  
Straight hems.  
Jean style stitching.  
Tear out label.

Weight: 305 gsm

Age:	3-6m	6-12m	12-18m
Height (cm):	60-66	66-76	76-86
Age:	18-24m	2-3y	
Height (cm):	86-93	93-98	



BZ56



**BZ49**

**BABYBUGZ**

**BZ49 BabyBugz Baby Leggings**

100% OCS certified organic cotton.\*  
Gently elasticated waistband.  
Slight drop crotch with gusset.  
Tear out label.

Weight: 200 gsm

Age:	3-6m	6-12m	12-18m
Height (cm):	60-66	66-76	76-86
Age:	18-24m	2-3y	
Height (cm):	86-93	93-98	

\*Heather marl 85% organic cotton/15% viscose.



AW APPROVED  
**VEGAN**



Tear Out

**larkwood**  
Baby and Toddler Collection

**LW85T Larkwood Baby/Toddler Lounge Pants**

96% cotton/4% elastane.  
Single jersey.  
Elasticated waistband with mock drawcord.  
1x1 cuffed leg ends.  
Tag free.

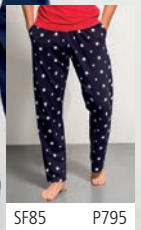
Weight: 180 gsm

Age:	0-6m	6-12m	12-18m
Height (cm):	60/68	68/80	80/86
Age:	18-24m	2-3y	3-4y
Height (cm):	86/92	92/98	98/104

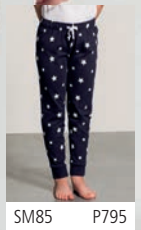


No Label

**LW85T**



SF85 P795



SM85 P795

**NEW**

**LW61T**

**larkwood**  
Baby and Toddler Collection

**LW61T Larkwood Baby/Toddler Leggings**

96% cotton/4% elastane.  
Single jersey.  
Elasticated waist.  
Twin needle stitching at hem.

Weight: 190 gsm

Age:	3-6m	6-12m	12-18m
Height (cm):	62/68	68/80	80/86
Age:	18-24m	2-3y	3-4y
Height (cm):	86/92	92/98	98/104



**Sedex**

**BABYBUGZ**

**BZ46 BabyBugz Baby Striped Leggings**

100% OCS certified organic cotton.\*  
Yarn dyed narrow stripes.  
Gently elasticated waistband.  
Slight drop crotch with gusset.  
Tear out label.

Weight: 200 gsm

Age:	3-6m	6-12m	12-18m
Height (cm):	60-66	66-76	76-86

\*White/heather marl 92% organic cotton/8% viscose.



AW APPROVED  
**VEGAN**



Tear Out

**BZ46**



**LW62T**

**larkwood**  
Baby and Toddler Collection

**LW62T Larkwood Baby/Toddler Joggers**

80% cotton/20% polyester.\*  
Brushed back fleece.  
Elasticated waistband with self colour mock drawcord.  
Cuffed leg ends.  
No central panels for ease of decoration.

Weight: 280 gsm

Age:	6-12m	12-18m	18-24m	24-36m
Height (cm):	68/80	80/86	86/92	92/98

\*Heather grey 71% cotton/23% polyester/6% viscose.



**Sedex**

**BABYBUGZ**

**BZ54 BabyBugz Baby Rocks Denim Trousers**

100% OCS certified organic cotton.  
Elasticated waistband.  
Stitched mock pockets and fly.  
Drop crotch.  
Straight hems.  
Tear out label.

Weight: 305 gsm

Age:	3-6m	6-12m	12-18m
Height (cm):	60-66	66-76	76-86
Age:	18-24m	2-3y	
Height (cm):	86-93	93-98	



Tear Out



AW APPROVED  
**VEGAN**

**BZ54**



## LW50T



**larkwood**  
Baby and Toddler Collection

### LW50T Larkwood Baby Sleepsuit

100% cotton interlock.  
Soft fabric for comfort.  
YKK popper closure on front and legs.  
Shaped feet.

Weight: 200 gsm

Age:	Newborn	0-6m	6-12m	12-18m
Height (cm):	56	60/68	68/80	80/86



black



white



pale blue



pale pink

**Sedex**

## LW53T

**larkwood**  
Baby and Toddler Collection



### LW53T Larkwood Contrast Baby Sleepsuit

100% cotton interlock.  
Soft fabric for comfort.  
Envelope neckline.  
Contrast trim to neck and cuffs.  
YKK popper closure around legs.

Weight: 200 gsm

Age:	0-3m	3-6m	6-12m	12-18m
Height (cm):	62	62/68	68/80	80/86



white/white



pale blue/white

**Sedex**

## LW650T



**larkwood**  
Baby and Toddler Collection

### LW650T Larkwood Organic Baby Sleepsuit

100% organic cotton.  
Single jersey.  
Self colour bound neckline.  
YKK popper closure on shoulder and around legs.  
Shaped feet.  
Tag free.

Weight: 160 gsm

Age:	Newborn	0-3m	3-6m
Height (cm):	56	62	62/68
Age:	6-12m	12-18m	
Height (cm):	68/80	80/86	



white

**No Label**

**Sedex**

### BZ13 BabyBugz Baby Rompersuit

100% combed ring spun cotton.\*  
In transition to using organic cotton.  
Envelope neckline.  
Self fabric bound cuffs and leg openings.  
Self colour popper closure around legs.

Weight: 200 gsm

Age:	3-6m	6-12m	12-18m
Height (cm):	60-66	66-76	76-86



black



white



nautical navy



dusty blue



heather marl\*



powder pink

**NEW APPROVED VEGAN**

\*Heather marl 85% combed cotton/15% polyester.

## BZ35



**BABYBUGZ**

### BZ35 BabyBugz Baby Organic Sleepsuit with Mitts

100% OCS certified organic combed cotton.  
Envelope neckline.  
Built in scratch mitts.  
Self colour popper closure around legs.  
Integrated feet.  
Tear out label.

Weight: 200 gsm

Age:	0-3m	3-6m	6-12m
Height (cm):	56-60	60-66	66-76



white



natural

**Tear Out**



**NEW APPROVED VEGAN**

## BZ13

**BABYBUGZ**



BZ41

BABYBUGZ



**BZ41 BabyBugz Baby Baseball Playsuit**

100% OCS certified organic cotton.\*  
Raglan style. Contrast neckline and sleeves.  
Two red poppers on front left raglan seam.  
Short leg length. Red popper bottom closure. Tear out label.



Weight: 200 gsm

Age:	3-6m	6-12m	12-18m
Height (cm):	60-66	66-76	76-86

\*White/heather marl 94% organic cotton/6% polyester.



**larkwood**  
Baby and Toddler Collection

LW57T



**LW57T Larkwood Baby Long Sleeve Striped Bodysuit**

100% cotton.  
Contrast bound collar and elbow patches.  
YKK popper closure on left shoulder and around legs.  
Contrast ribbed cuffs and leg ends.

Weight: 160 gsm

Age:	0-3m	3-6m	6-12m	12-18m
Height (cm):	62	62/68	68/80	80/86



**BZ13S BabyBugz Baby Stripy Rompersuit**

100% combed ring spun cotton.  
In transition to using organic cotton.  
Ribbed envelope neckline.  
Self fabric bound cuffs and leg openings.  
Popper closure around legs. Tear out label.

Weight: 200 gsm

Age:	3-6m	6-12m	12-18m
Height (cm):	60-66	66-76	76-86



**BZ48 BabyBugz Baby Short Sleeve Striped Bodysuit**

100% OCS certified organic cotton.\*  
Yarn dyed narrow stripes. Envelope neckline.  
Popper closure around legs.  
Short style leg length. Tear out label.

Weight: 200 gsm

Age:	3-6m	6-12m	12-18m
Height (cm):	60-66	66-76	76-86

\*White/heather marl 92% organic cotton/8% viscose.



**BZ13S**  
BABYBUGZ



**BZ48**  
BABYBUGZ



**BZ10**



**BABYBUGZ**

## BZ10 BabyBugz Baby Bodysuit

100% OCS certified organic cotton.\*  
Envelope neckline. Self fabric bound neckline, cuffs and leg openings. Bottom popper closure.

Weight: 200 gsm

Age:	0-3m	3-6m	6-12m
Height (cm):	56-60	60-66	66-76
Age:	12-18m	18-24m	
Height (cm):	76-86	86-93	

\*Bubble gum pink, dusty blue, kelly green, nautical navy, powder pink, red and soft yellow 100% standard cotton.

\*\*Charcoal melange, heather blue and mocha 60% organic cotton/40% polyester.

▲Heather marl 85% organic cotton/15% polyester.

■Available in 18-24m.



AN APPROVED VEGAN



**larkwood**  
Baby and Toddler Collection

## LW655T Larkwood Organic Baby Bodysuit

100% organic cotton.  
Single jersey.  
Envelope neckline.  
Self colour bound neckline, cuffs and leg openings.  
YKK bottom popper closure.  
Tag free.

Weight: 160 gsm

Age:	Newborn	0-3m	3-6m
Height (cm):	56	62	62/68
Age:	6-12m	12-18m	
Height (cm):	68/80	80/86	



Sedex



**LW655T**



**LW500T**



**larkwood**  
Baby and Toddler Collection

## LW500T Larkwood Essential Short Sleeve Baby Bodysuit

100% cotton.\*  
Single jersey. Envelope neckline.  
Self colour bound neck, cuffs and leg openings.  
YKK bottom popper closure. Tag free.

Weight: 160 gsm

Age:	0-3m	3-6m	6-12m	12-18m
Height (cm):	62	62/68	68/80	80/86

\*Heather grey 90% cotton/10% viscose.



**larkwood**  
Baby and Toddler Collection

## LW55T Larkwood Short Sleeve Baby Bodysuit

100% cotton interlock.\*  
Envelope neckline.  
Self colour bound neck, cuffs and leg openings.  
YKK bottom popper closure.

Weight: 200 gsm

Age:	0-3m	3-6m	6-12m	12-18m
Height (cm):	62	62/68	68/80	80/86

\*Heather grey 90% cotton/10% viscose.



Sedex

**LW55T**



**LW52T**



**larkwood**  
Baby and Toddler Collection

## LW52T Larkwood Long Sleeve Baby Bodysuit

100% cotton interlock.  
Envelope neckline.  
YKK bottom popper closure.

Weight: 200 gsm

Age:	0-3m	3-6m	6-12m	12-18m
Height (cm):	62	62/68	68/80	80/86



Sedex

**BABYBUGZ**

## BZ30 BabyBugz Baby Organic Long Sleeve Bodysuit

100% OCS certified organic combed ringspun cotton.\*  
Envelope neckline. Bound cuffs.  
Bottom popper closure. Tear out label.

Weight: 200 gsm

Age:	0-3m	3-6m	6-12m	12-18m
Height (cm):	56-60	60-66	66-76	76-86

\*Heather marl 85% organic cotton/15% polyester.



AN APPROVED VEGAN



**BZ30**





**BL100B**

**BELLA+CANVAS.**

**BL100B Bella+Canvas Baby Jersey Short Sleeve Bodysuit**

100% airlume combed ringspun cotton.\*  
Ribbed envelope neckline, cuffs and leg openings.  
Side seams. Bottom popper closure.  
Tear out label.

Weight: 145 gsm

Age: 3-6m 6-12m 12-18m 18-24m

\*Athletic heather 90% combed ringspun cotton/10% polyester.

\*\*Heathers 52% combed ringspun cotton/48% polyester.



**BELLA+CANVAS.**

**BL134B Bella+Canvas Baby Tri-Blend Short Sleeve Bodysuit**

50% polyester/25% combed ringspun cotton/25% rayon.  
Ribbed envelope neckline, cuffs and leg openings.  
Side seams.  
Bottom popper closure.  
Tear out label.

Weight: 130 gsm

Age: 3-6m 6-12m 12-18m 18-24m



**BL134B**



**LW51T**

**larkwood**  
Baby and Toddler Collection

**LW51T Larkwood Contrast Baby Bodysuit**

100% cotton interlock.  
Envelope neckline.  
Contrast trim to neck, cuffs and legs.  
YKK bottom popper closure.

Weight: 200 gsm

Age: 0-3m 3-6m 6-12m 12-18m  
Height (cm): 62 62/68 68/80 80/86



**Sedex**

**BABYBUGZ**

**BZ19 BabyBugz Baby Ringer Bodysuit**

100% OCS certified organic combed ringspun cotton.\*  
Contrast bound collar, cuffs and leg openings.  
Two self colour poppers on left shoulder.  
Bottom popper closure.

Weight: 200 gsm

Age: 3-6m 6-12m 12-18m  
Height (cm): 60-66 66-76 76-86

\*White/heather marl 96% organic cotton/4% polyester.



**BZ19**



**BZ58**

**BABYBUGZ**

**BZ58 BabyBugz Dips Bodysuit**

100% OCS certified organic combed ringspun cotton.  
Dip dyed design.  
Bound envelope neck and sleeve ends.  
Coverseamed neck, sleeves and hem.  
Nickel free bottom popper closure.  
Tear out label.

Weight: 200 gsm

Age: 3-6m 6-12m 12-18m 18-24m  
Height (cm): 60-66 66-76 76-86 86-93



**Tear Out**



**AN APPROVED VEGAN**

**larkwood**  
Baby and Toddler Collection

**LW502T Larkwood Essential Short Sleeve Baby Baseball Bodysuit**

100% cotton.\*  
Single jersey.  
Contrast ribbed collar and bound leg openings.  
Contrast sleeves.  
YKK popper bottom closure.  
Tag free.

Weight: 160 gsm

Age: 0-3m 3-6m 6-12m 12-18m  
Height (cm): 62 62/68 68/80 80/86

\*Heather grey 90% cotton/10% viscose.



**No Label**



**LW502T**

LW71T



**larkwood**  
Baby and Toddler Collection

## LW71T Larkwood Baby/Toddler Pyjamas

100% cotton single jersey.  
Baseball style t-shirt.  
Contrast bound collar.  
Contrast raglan sleeves.  
Plain cuffs and hem.  
Twin needle stitching.  
Plain bottoms with elasticated waistband.  
Plain ribbed cuffs.  
Unbranded size label.  
KEEP AWAY FROM FIRE.

Weight: 160 gsm

Age:	0-6m	6-12m	12-18m
Height (cm):	60/68	68/80	80/86
Age:	18-24m	24-36m	3-4y
Height (cm):	86/92	92/98	98/104



navy/white candyfloss pink/white

Sedex



**larkwood**  
Baby and Toddler Collection

## LW90T Larkwood Baby/Toddler Cap

100% cotton twill.  
Age 6-12 months has a soft peak.  
Elasticated back.

Weight: 185 gsm

Age: 6-12m 1-2yrs 3-5yrs



LW90T



LW72T



**larkwood**  
Baby and Toddler Collection

## LW72T Larkwood Baby/Toddler Striped Pyjamas

100% cotton sleeves and bottoms.  
100% polyester body.  
Striped raglan sleeves.  
Contrast ribbed collar and cuffs.  
Suitable for sublimation printing, front and back.  
Striped cotton bottoms.  
Fully elasticated waistband.  
Contrast ribbed leg ends.  
Unbranded size label.  
KEEP AWAY FROM FIRE.

Weight: 160 gsm

Age:	0-6m	6-12m	12-18m
Height (cm):	60/68	68/80	80/86
Age:	18-24m	24-36m	3-4y
Height (cm):	86/92	92/98	98/104



navy/white pink/white

Sedex



**BABYBUGZ**

## BZ15 BabyBugz Baby Knotted Hat

100% OCS certified organic combed ringspun cotton.\*  
Deep double fabric comfort band.  
Single knot.  
Tear out label.

Weight: 200 gsm

Size: One size

\*Heather marl 85% organic cotton/15% polyester.



BZ15



LW83T



SK83 P794 SM83 P794

**larkwood**  
Baby and Toddler Collection

## LW83T Larkwood Baby/Toddler Tartan Lounge Pants

100% cotton flannel.  
Twill weave.  
Woven tartan trousers.  
Fully elasticated waistband with mock drawcord.  
Twin needle hem.

Weight: 115 gsm

Age:	0-6m	6-12m	12-18m
Height (cm):	60/68	68/80	80/86
Age:	18-24m	24-36m	3-4y
Height (cm):	86/92	92/98	98/104



white/pink navy/green red/navy

**BABYBUGZ**

## BZ51 BabyBugz Little Hat with Ears

100% OCS certified organic combed ringspun cotton.\*  
Narrow yarn dyed stripes.  
Soft stretch fabric.  
Wide hem band.  
Tear out label.

Weight: 200 gsm

Size: One size

\*White/heather marl 92% organic cotton/8% viscose.



BZ51



LW82T



**larkwood**  
Baby and Toddler Collection

**LW82T Larkwood Baby/Toddler Bib**

100% cotton interlock.  
Double fabric.  
Bound edges.  
Tear release closure on back neck.

Weight: 200 gsm

Size: One size



BZ12



**BABYBUGZ**

**BZ12 BabyBugz Baby Bib**

100% OCS certified organic cotton.\*  
Double fabric.  
Soft, white hook and loop closure on back neck.  
Self fabric bound edges.

Weight: 200 gsm

Size: One size

\*Heather marl 85% combed cotton/15% polyester.



LW22T



**larkwood**  
Baby and Toddler Collection

**LW22T Larkwood Baby/Toddler Terry Bib**

80% cotton/20% polyester terry towelling.  
Jersey trim binding in contrast colours (or plain white available).  
Double fabric front.  
Tear release tab closure.

Weight: 245 gsm

Size: One size



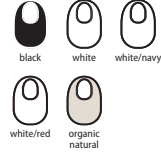
**BABYBUGZ**

**BZ59 BabyBugz Organic Single Layer Bib**

100% OCS certified organic combed ringspun cotton. Single layer fabric.  
Popper closure on back neck.  
Bound edges. Tear out label.

Weight: 200 gsm

Size: One size



BZ59

NEW



**BABYBUGZ**

**BZ23 BabyBugz Reversible Bandana Bib**

100% OCS certified organic combed ringspun cotton.\*  
Reversible style. One side with contrast bound edges. Solid colour reverse. Two position popper closure on back neck. Tear out label.

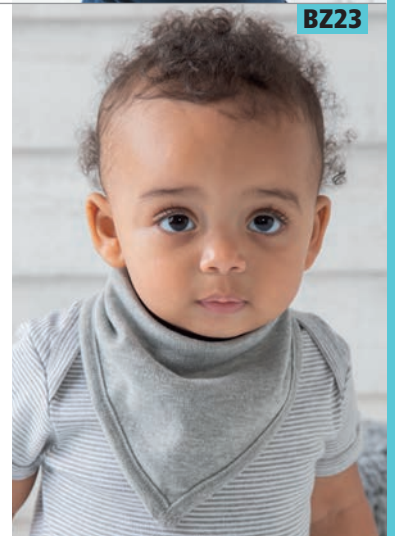
Weight: 200 gsm

Size: One size

\*Heather marl 98% organic cotton/2% polyester.



BZ23



**BABYBUGZ**

**BZ55 BabyBugz Baby Rocks Denim Bandana Bib**

100% OCS certified organic cotton.  
Single layer.  
Adjustable nickel free popper closure.  
Bound edge.  
Jean style stitching.  
Tear out label.

Weight: 305 gsm

Size: One size



BZ55



LW900T

**larkwood**  
Baby and Toddler Collection

**LW900T Larkwood Blanket**

100% cotton.\*  
Single jersey. Double layer blanket with bound edge. Tag free.

Weight: 160 gsm

Dimensions: 74 x 74 cm

\*Heather grey 90% cotton/10% viscose.

